

Tempo Arc Idealform Shower Bath 170x80cm LH No Handgrips No Tapholes

ILLUSTRATED

- E2568** Tempo Arc 170 x 80cm Idealform shower bath. left hand, no handgrips no tapholes
- B0247** Active bath filler 2 hole dual control
- E2569** Tempo Arc shower bath front panel
- E3169** Unilux 70cm end panel
- E5795** Waste 1½" bath pop-up waste and overflow components only
- E5800** Bath pop-up waste operating handle and cover only
- E2571** Tempo Arc shower bath screen, Clear Glass and Bright Silver finish
- A5901** TMV Thermostatic mixing valve 22mm

ILLUSTRATED PRODUCT DETAILS









Weights

- E2568** 27.00 KG
- B0247** 4.45 KG
- E2569** 5.00 KG
- E3169** 2.58 KG
- E5795** 1.34 KG
- E5800** 0.82 KG
- E2571** 27.00 KG
- A5901** 1.70 KG

Materials

- E2568** Idealform
- B0247** Chrome Plated Brass
- E2569** Acrylic
- E3169** Acrylic
- E5795** Chrome Plated Metal
- E5800** Chrome Plated Metal
- E2571** Toughened Safety Glass
- A5901** Chrome Plated Metal

Finishes

- E2568**  White (01)
- B0247**  Chrome (AA)
- E2569**  White (01)
- E3169**  White (01)
- E5795**  Neutral / No Finish (67)
- E5800**  Chrome (AA)
- E2571**  Bright Silver (EO)
- A5901**  Chrome (AA)

Capacity

- E2568** 195 litres (to overflow)

Designer

Robin Levien, RDI

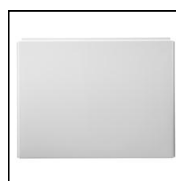
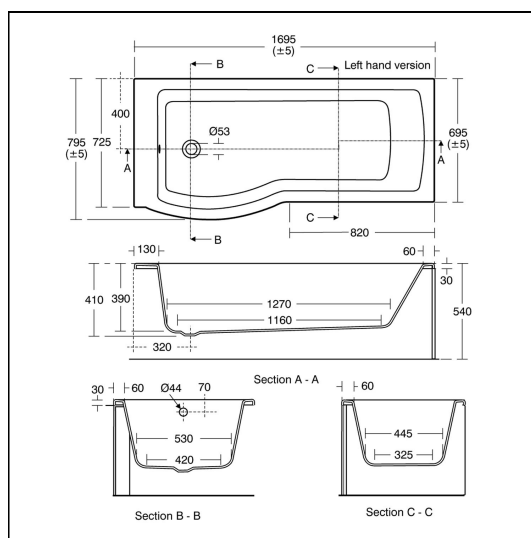
Standards

Constructed to EN 198:2008. EN 14516

Special Notes

Consideration should be given to safe hot water delivery and the use of an appropriate temperature reduction device see A5901AA or Part G for guidance.

To be used with E2571EO Tempo Arc shower bath screen



ACCREDITATIONS

E2568(01)

water label 195.0 Litres