

bathrooms *to love*

brought to you exclusively by our bathroom specialists

Lecco Installation Guide



Please read these instructions first. We reserve the right to change product specifications due to possible technical improvements.

1. Identify a position which does not fall into "Zone 1" as shown.



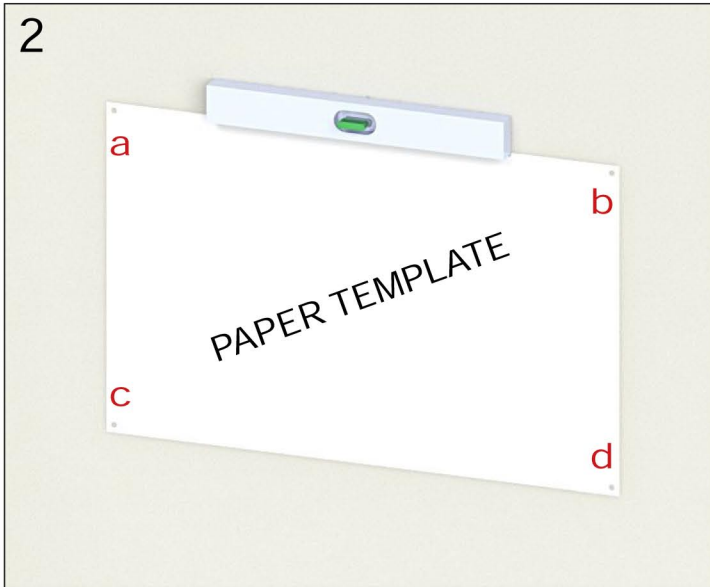
Refers to the area above the bath or the shower, up to a height of 2.25 metres. The minimum rating required here is IPX5.



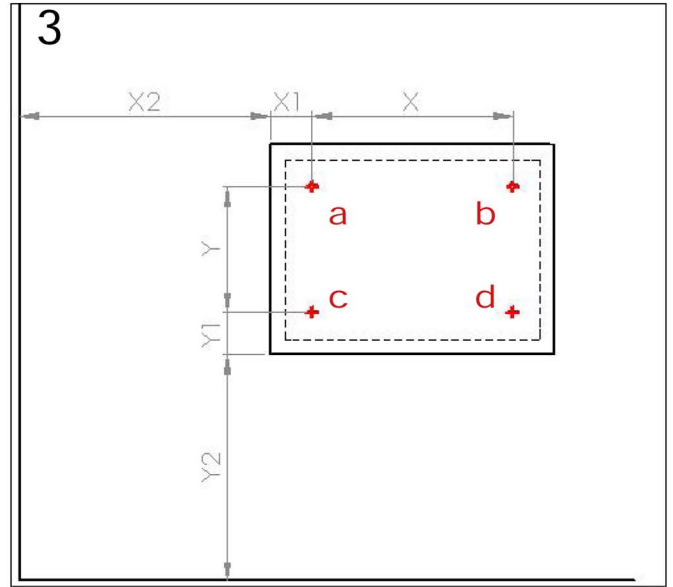
Convers an area of 0.6 metres wide immediately next to, and all around "Zone 1". Washbasins should also be treated as "Zone 2". The minimum rating required here is IPX4.



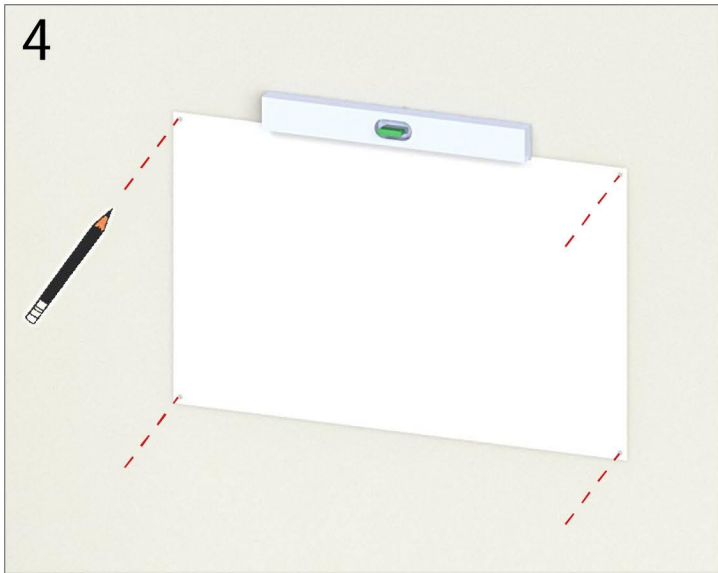
Has no special requirements, unless water jets are likely to be used for cleaning purposes.



2. In order to facilitate installation we have included a paper template to drill the holes in the wall.

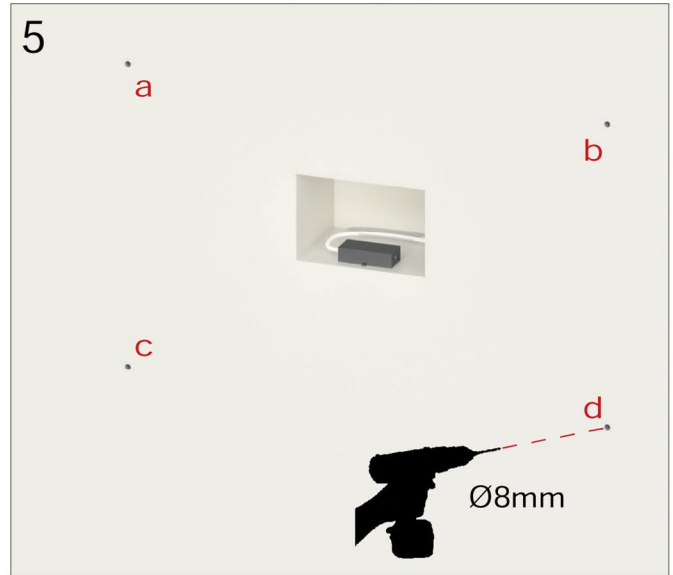


3. Unfold the paper template and apply on the mirror back to ensure that the holes match up.

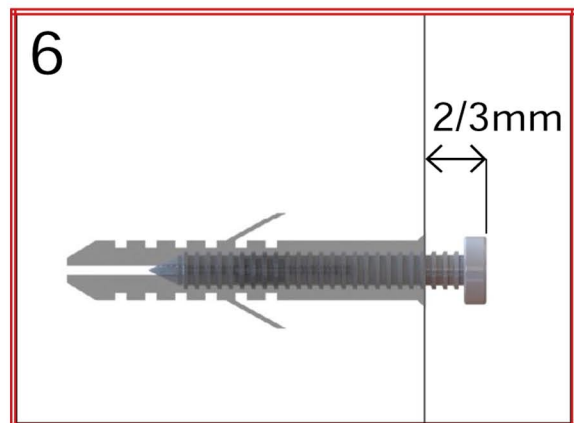


4. Tape the paper template to the wall taking into consideration the position of the mounting holes and the mirror edge. With a level, position the template so that it is perfectly level.

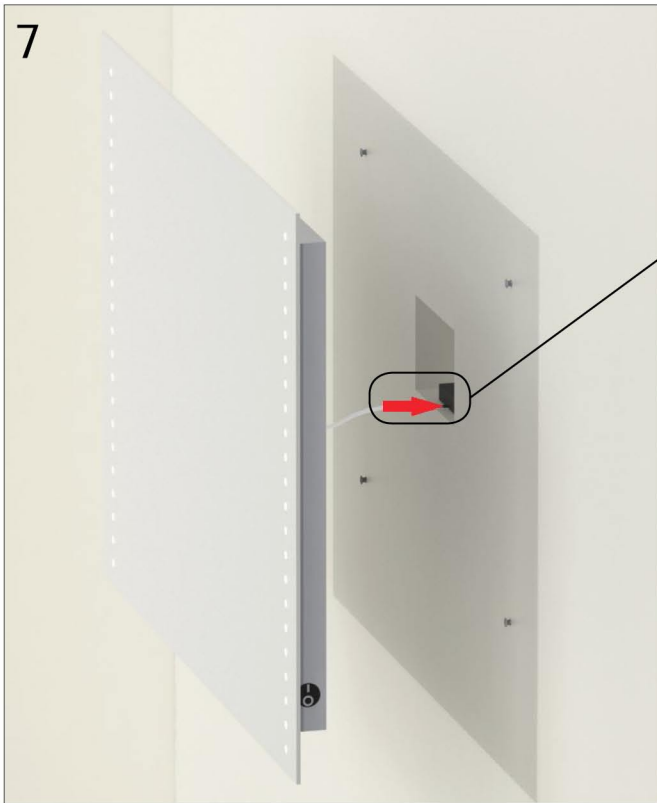
6. Drill and insert the screw anchors suited to the type of wall to which the mirror will be fixed (only screws in the case of wood studs).



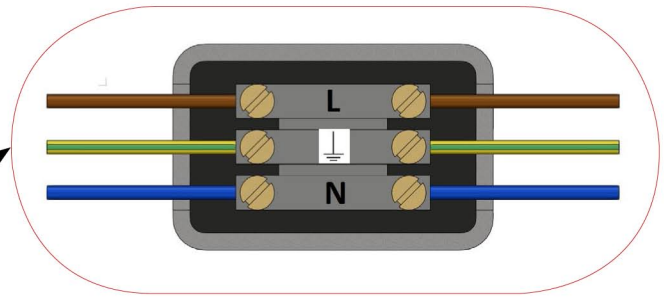
5. Ensure that there are no water pipes or electrical wiring behind the fixing points.



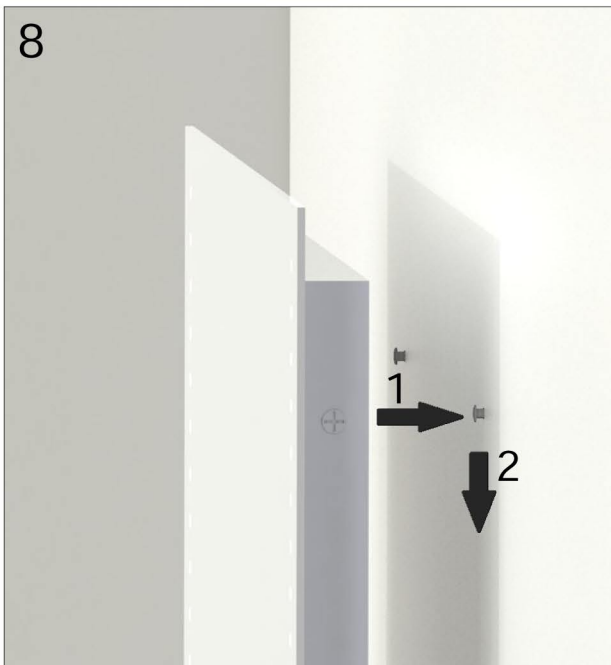
a-b-c-d



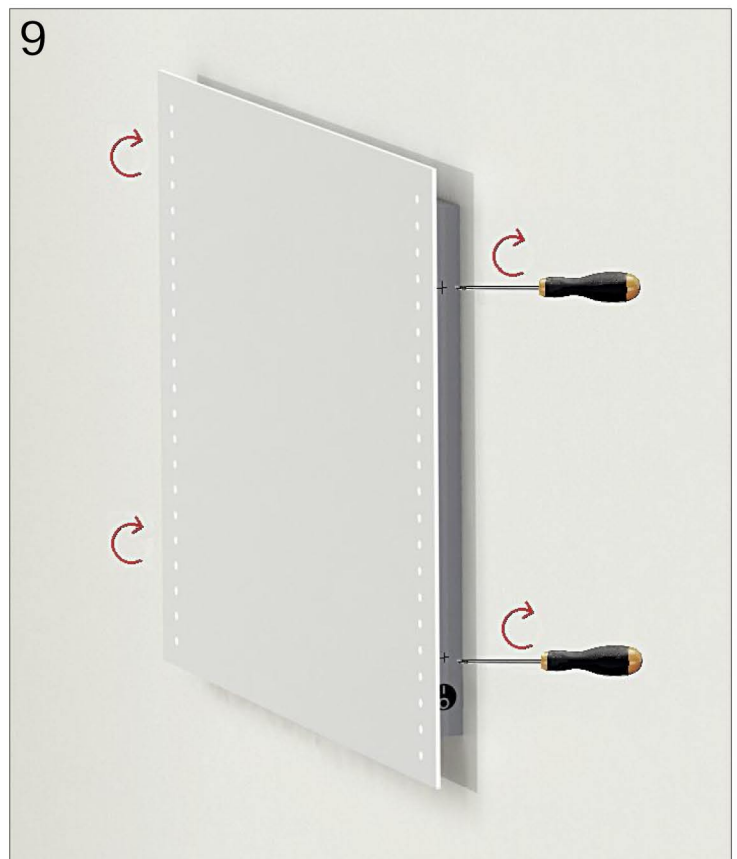
WIRING DIAGRAM



7. Connect the mirror wiring in an IP44 approved connector box (not included) which can be inserted into the wall anywhere behind the cabinet mirror.



8. Hang the mirror.



9. In the case that the mirror has stainless steel side screws ensure that they are tight.

Operating Instructions:

- To turn illumination ON or OFF, operate the sensor switch located at the bottom of the mirror by slightly moving your hand in front of the sensor without touching it.
- The demisting function is ON only when the mirror is illuminated, if an ON / OFF red light switch is not installed on the mirror.

Product Care:

- Do not use abrasives or solvents when cleaning the mirror.
- Clean off all the water as soon as possible using a soft, damp cloth so that to avoid stains on the surface.

Product Life :

At the end of its useful life, entrust the unit to th local waste disposal company.

Infrared cabinet mirror light on/off: sensor instructions

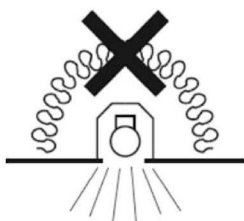
By moving the hand close to the sensor, without touching it, the LED lights can be turned on or off.

Please note that the mirror must be installed not less than 15 cm from an obstacle column otherwise the sensor will “read” the object and may not function properly.

Warnings and precautions for use regarding the electrical connections.

Our products must be used indoors only. The electricity connection and possible subsequent electric interventions must only be done by a qualified electrician who will operate in accordance with the country instructions and current regulations in terms of electricity.

Should the external flexible cable or cord of this appliance be damaged, it shall be exclusively replaced by the manufacturer or his service center Agent or a similar qualified person in order to avoid any hazard.



Appliance not suitable for being covered with thermal insulation material.



Appliance for indoor use only.