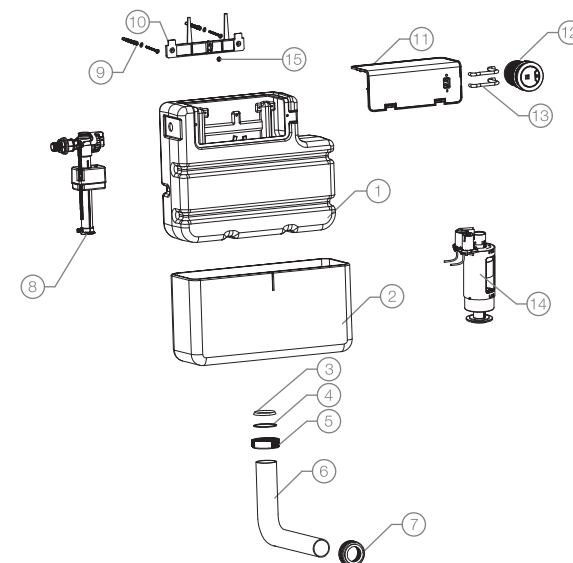


We recommend that this product should be fitted by a qualified plumber.

PARTS INCLUDED



1. Cistern
2. EPS Jacket
3. Seal
4. Washer
5. Flush Bend Nut
6. Flush Bend
7. Key Seal
8. Side Entry Fill Valve
9. 2 x Attaching Screws
10. Attachment Plate
11. Cistern Cover
12. Pneumatic Push-button
13. Air Hoses
14. Flush Valve
15. Cistern Fixing Screw

Tavistock Ltd.

A Division of Roper Rhodes Limited

Brassmill Lane Trading Estate, Bath BA1 3JF

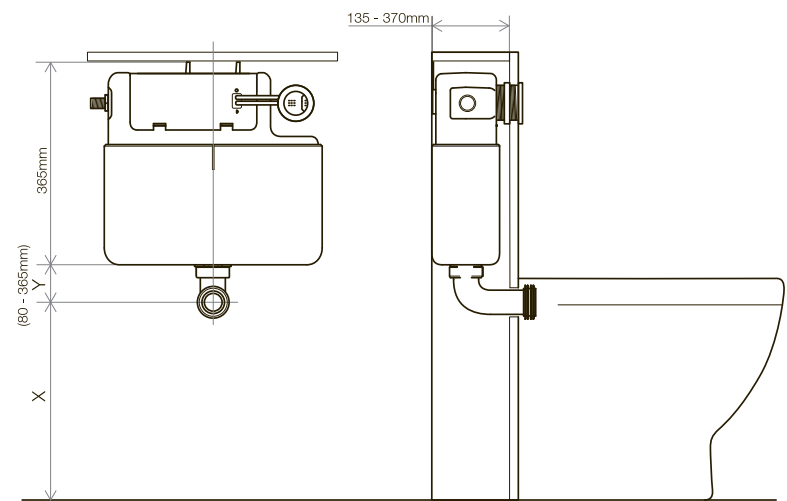
tel : 01225 303900

fax : 01225 448877

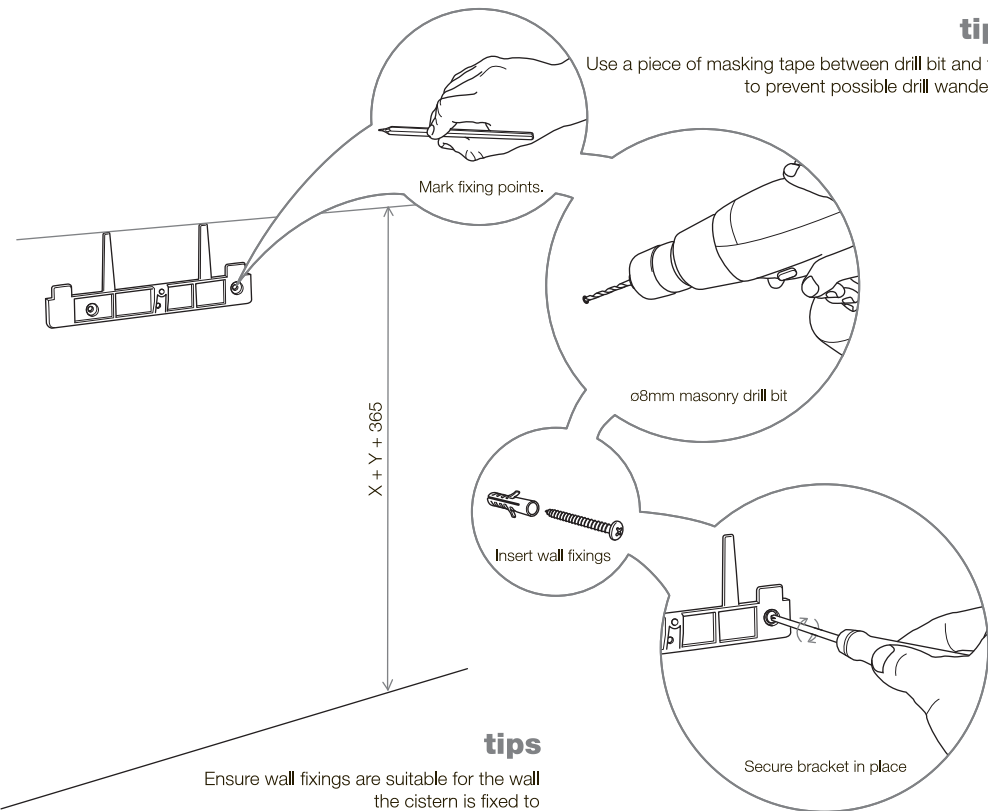
email : tavistock@roperrhodes.co.uk

www.tavistock-bathrooms.co.uk

FITTING DIMENSIONS



INSTALLATION OF THE CISTERN



tips

Use a piece of masking tape between drill bit and tiles to prevent possible drill wandering

Mark fixing points.

ø8mm masonry drill bit

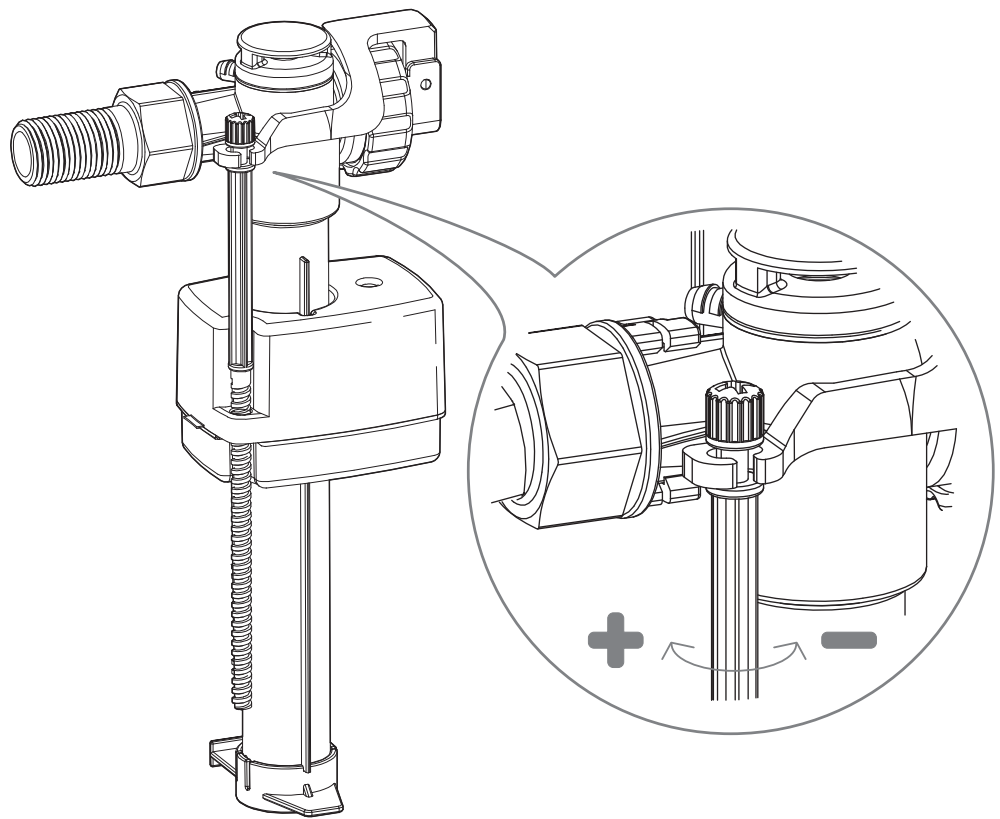
Insert wall fixings

Secure bracket in place

tips

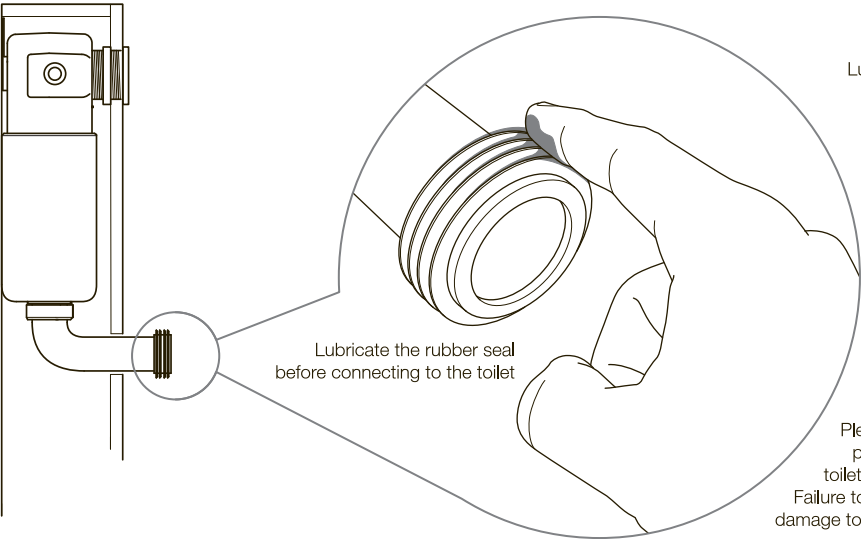
Ensure wall fixings are suitable for the wall the cistern is fixed to

ADJUSTING THE WATER LEVEL



By adjusting the fill valve the water level can either be increased or decreased accordingly

FIXING THE TOILET



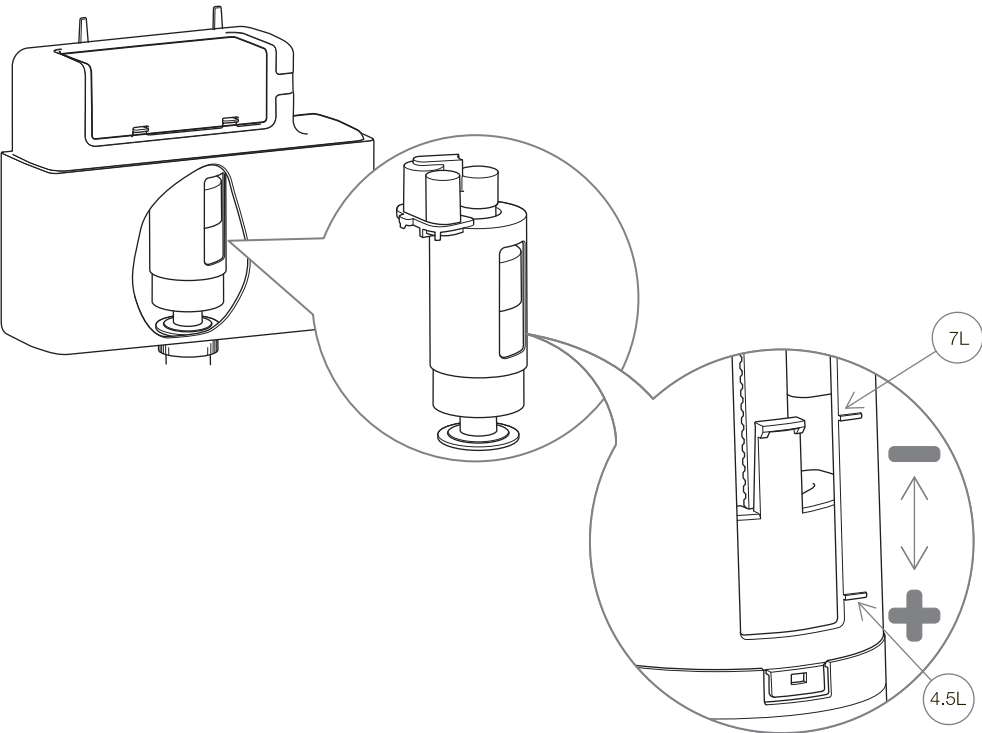
note

Lubricant not supplied.
Please use a suitable
plumbers grease.

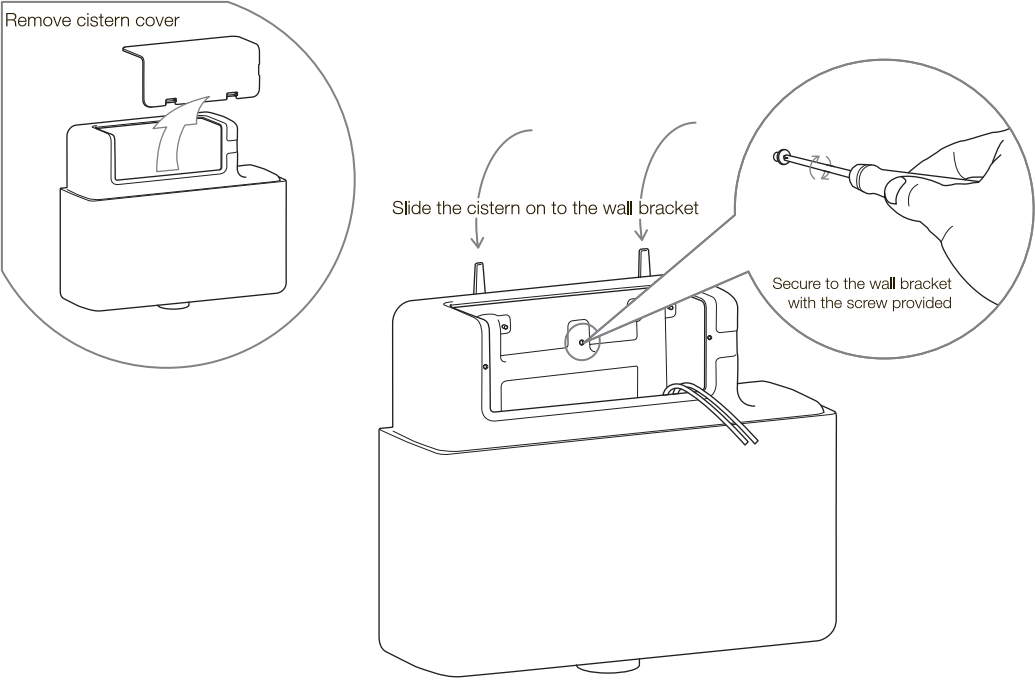
Important

Please support the flush
pipe when locating the
toilet onto the rubber seal.
Failure to do so could result in
damage to the flush connection.

ADJUSTING THE FLUSH VOLUME

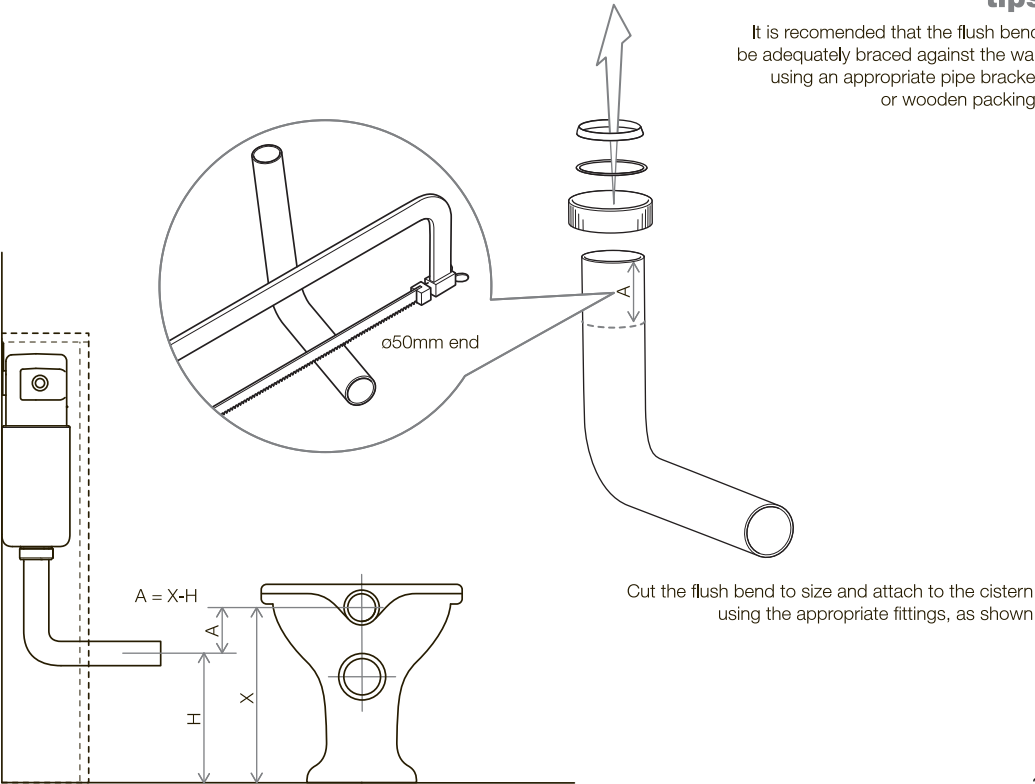


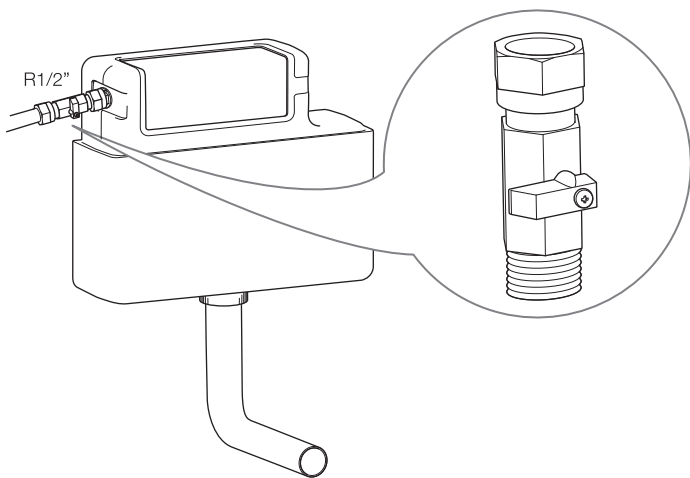
By adjusting the flush valve the flushing volume can be altered



tips

It is recommended that the flush bend
be adequately braced against the wall
using an appropriate pipe bracket
or wooden packing.



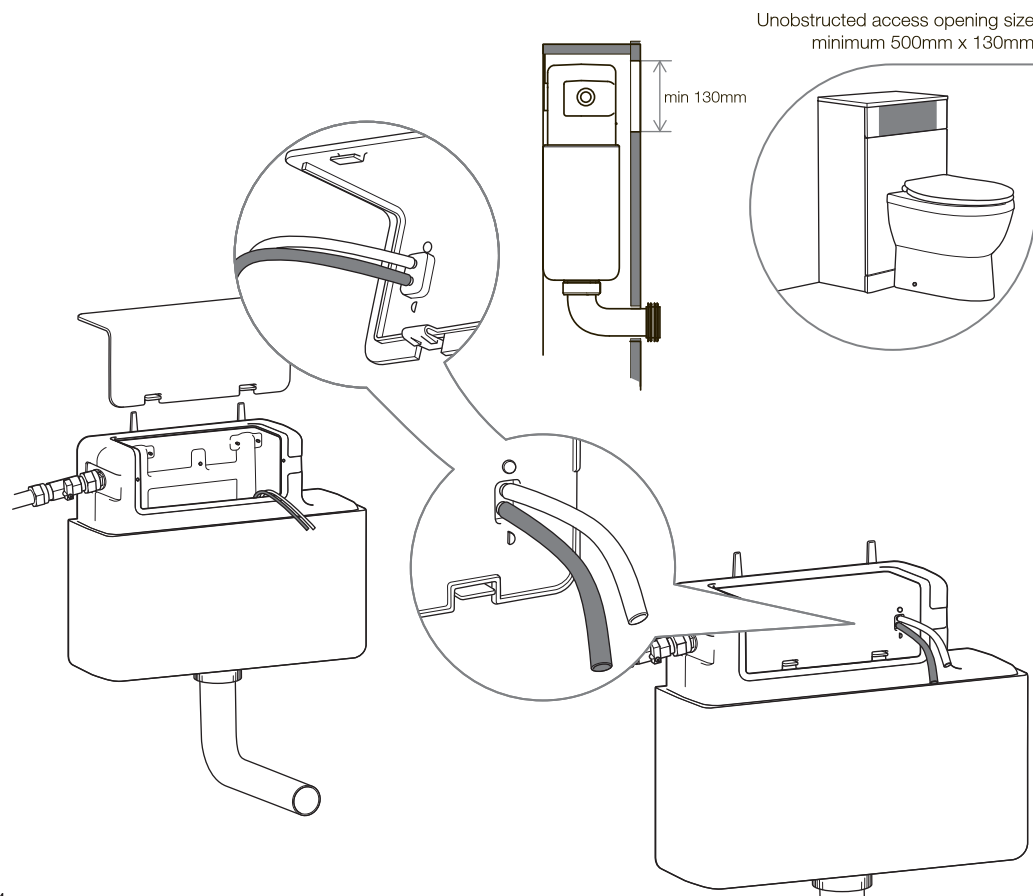


note

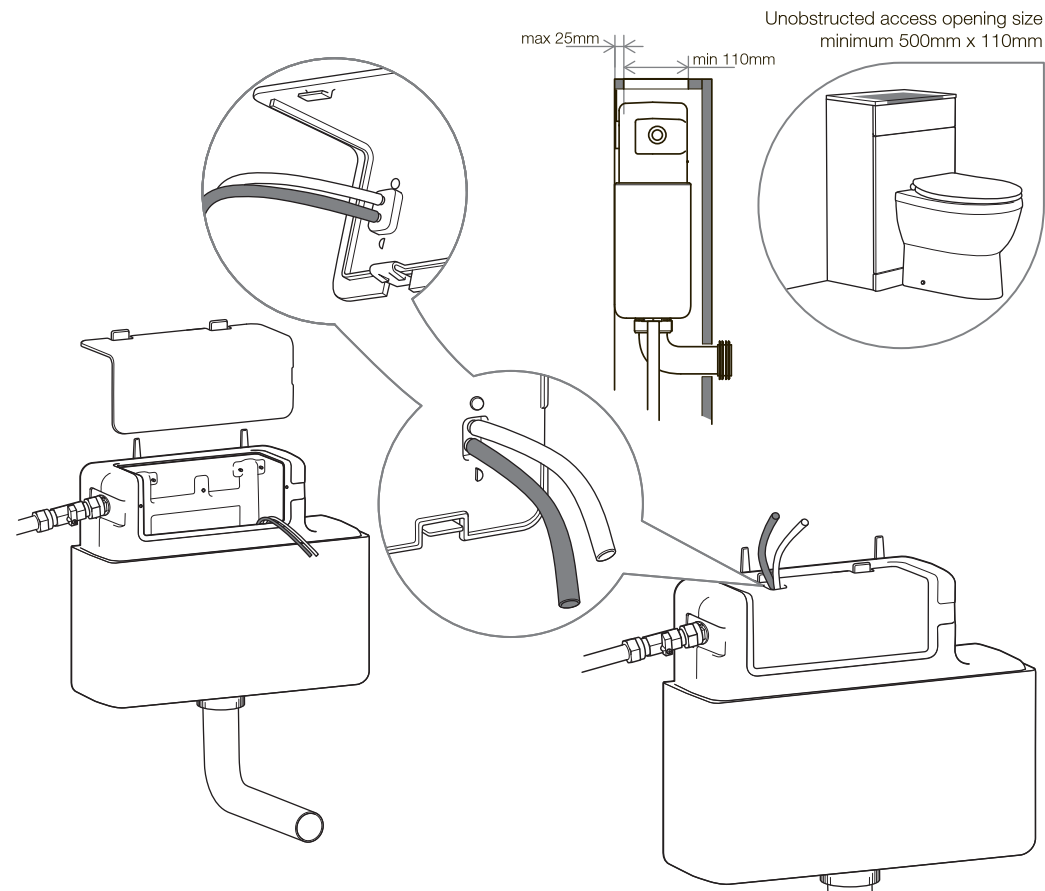
Stop valve not included

Connect the water supply to the cistern using an approved stop valve

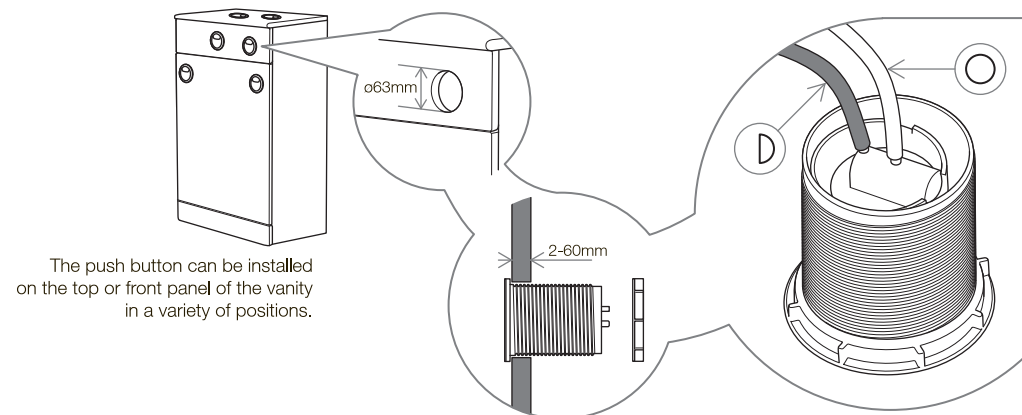
INSTALLATION WITH A FRONT ACCESS PANEL



INSTALLATION WITH A TOP ACCESS PANEL



INSTALLATION OF PNEUMATIC PUSH-BUTTON



The push button can be installed on the top or front panel of the vanity in a variety of positions.