

# Dee Bi Sink & RH Slophopper, No Taphole

## ILLUSTRATED

- S6551** (DU HS) Dee right hand slop hopper with sink, back inlet
- S4663** Flushpipe 850 x 35mm diameter for slop hopper
- B1684** Nimbus 21 bib tap extension 1/2" x 100mm pair
- S3626** Conceala 2 cistern 6 litre single flush syphon high level side supply and internal overflow, lever with chain
- S3584** P trap outlet, plastic for slop hoppers
- S8925** (TRR2/P) Trap 1 1/2" plastic resealing bottle with 75mm seal, multi-purpose outlet
- S8760** Waste 1 1/2" unslotted strainer waste, 50mm long, 75mm dia. brass
- S8270** (TB H1) Markwik 1/2" bib taps
- B1686** Nimbus 21 concealed bib tap wall mount self centralising installation pair

## OPTIONS

- S4385** High Level Lever Assembly For Conceala 1 Cistern
- S9281** Leg 900mm stainless steel to floor (2 required)
- S3632** Conceala 1 cistern 9 litre single flush syphon, alternative height plastic flushbends side supply and internal overflow, no lever
- S3585** S trap outlet, plastic for slop hoppers

## ILLUSTRATED PRODUCT DETAILS





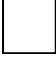
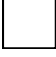



### Weights

- S6551** 18.80 KG
- S4663** 2.00 KG
- S3626** 3.00 KG
- S3584** 0.26 KG
- S8925** 0.33 KG
- S8760** 0.23 KG
- S8270** 1.65 KG

### Materials

- S6551** Stainless Steel
- S4663** Plastic
- B1684** Chrome Plated Brass
- S3626** Plastic
- S3584** Plastic
- S8925** Plastic
- S8760** Chrome Plated Metal
- S8270** Chrome Plated Brass
- B1686** Chrome Plated Brass

### Finishes

- S6551**  Stainless Steel finish (MY)
- S4663**  Neutral / No Finish (67)
- B1684**  Chrome (AA)
- S3626**  Neutral / No Finish (67)
- S3584**  White (01)
- S8925**  Neutral / No Finish (67)
- S8760**  Chrome (AA)
- S8270**  Chrome (AA)
- B1686**  Chrome (AA)

### Capacity

- S3626** 6 litres

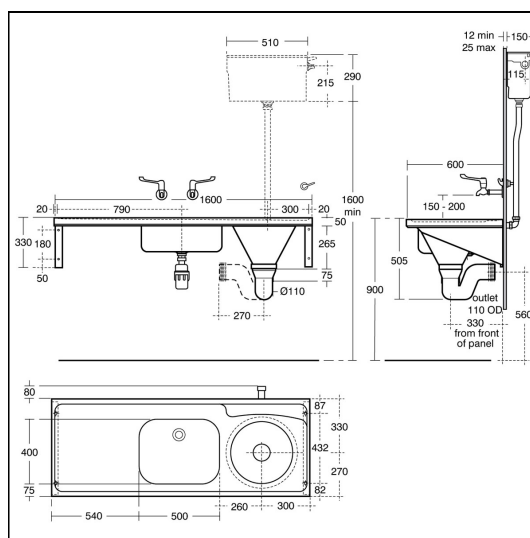
### Standards

1.2mm Stainless steel sheet conforms to BS EN 10088:Part 2:2005. Other items to relevant standards

### Special Notes

E: [info@idealspec.co.uk](mailto:info@idealspec.co.uk) | T: 0870 122 8822 | F: 0870 122 8282 | [www.idealspec.co.uk](http://www.idealspec.co.uk)

Ideal Standard (UK) Ltd. makes every effort to ensure that the information provided on its website is accurate. However, we cannot guarantee this, and accept no liability for any information or advice given via its website.



## FEATURES



## Dee Bi Sink & RH Slophopper, No Taphole

Note HTM64 does not cover for the provision of leg supports to floor.