

Care Plus Electric Washbasin Bracket, Vertical and Horizontal Adjustment

ILLUSTRATED

- S0654** Care Plus washbasin mounting electrically operated by lever, vertical and horizontal adjustment
- S0656** Care Plus track 60cm length
- E5499** Concept Freedom 60cm accessible washbasin, one taphole
- B9915** Concept Blue washbasin mixer 1 hole with pop-up waste
- S0650** Care Plus flexible 120cm feed and 150cm waste system for sideways adjustment

ILLUSTRATED PRODUCT DETAILS

Sizes

E5499 w:600 x d:555

Weights

S0654 23.82 KG

S0656 2.10 KG

E5499 14.00 KG

B9915 1.89 KG

S0650 1.70 KG

Materials

S0654 Mixed Material


S0656 Aluminium


E5499 Vitreous China


B9915 Chrome Plated Brass

S0650 Mixed Material


Finishes

S0654  Neutral / No Finish (67)

S0656  Neutral / No Finish (67)

E5499  White (01)

B9915  Chrome (AA)

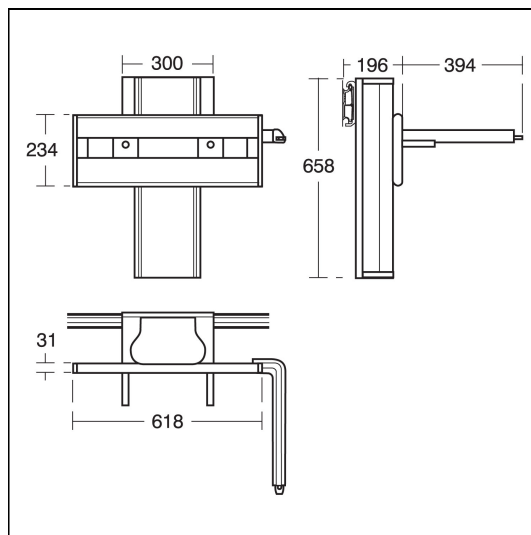
S0650  Neutral / No Finish (67)

Capacity

E5499 4 litres

Flow rates

B9915 5 Litres per minute @ 3 bar pressure



FEATURES

