

ProSys 120 depth WC cistern, mechanical

ILLUSTRATED

- R0317** ProSys 120 depth WC cistern, mechanical, front actuation
R0115 Oleas M1 mechanical dual flushplate Ideal Standard - chrome

OPTIONS

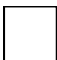

- R0121** Oleas M2 mechanical dual flushplate Ideal Standard - white
S0767 Oleas M2 mechanical dual flushplate Armitage Shanks - white
R0123 Oleas M3 mechanical dual flushplate Ideal Standard - white
S0858 Septa Pro M1 mechanical metal dual flushplate Armitage Shanks
S0859 Septa Pro M2 mechanical metal single flushplate Armitage Shanks
S0772 Septa Pro E1 electronic (infrared) & manual metal dual flushplate Armitage Shanks
S0773 Septa Pro E2 electronic (infrared) metal dual flushplate Armitage Shanks
R0130 Altes NT1 electronic (proximity) ceramic dual flushplate Ideal Standard - white
R0129 Symfo NT1 electronic (proximity) glass dual flushplate Ideal Standard - white
R0158 ProSys electronic conversion kit for proximity actuated flushplates (Altes & Symfo) (120 depth frames and cisterns only)
R0099 ProSys electronic conversion kit for infra-red actuated flushplates (Septa Pro E1 & E2) (120 depth frames and cisterns only)

ILLUSTRATED PRODUCT DETAILS

Weights

- R0317** 2.92 KG
R0115 0.34 KG

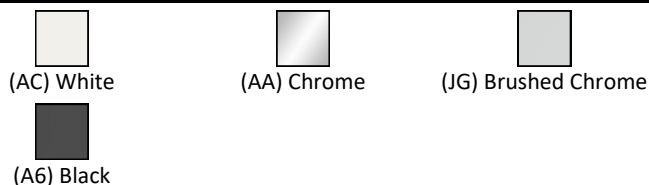
Finishes

- R0317**  Neutral / No Finish (67)
R0115  White (AC)

Materials

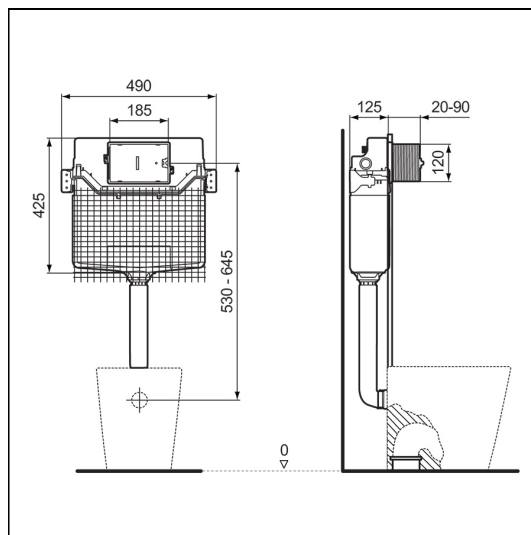
- R0317** Mixed Material
R0115 Mixed Material

FINISH OPTIONS



Special Notes

Suitable for use with BTW & Wall hung WC bowls at 6/4 or 4.5/3 litre dual flush. For use with Oleas and Septa Pro mechanical flushplates or Altes/Symfo or Septa Pro electronic plates with the appropriate conversion kit.



ACCREDITATIONS



FEATURES

