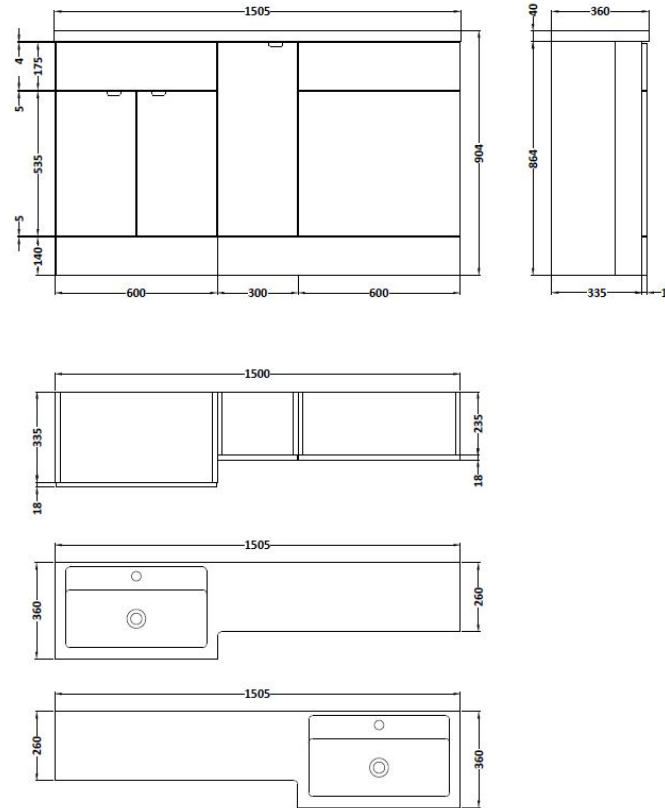


Sales Code: CBI513

Description: 1500mm Combination - Fd Option 2 - Lh

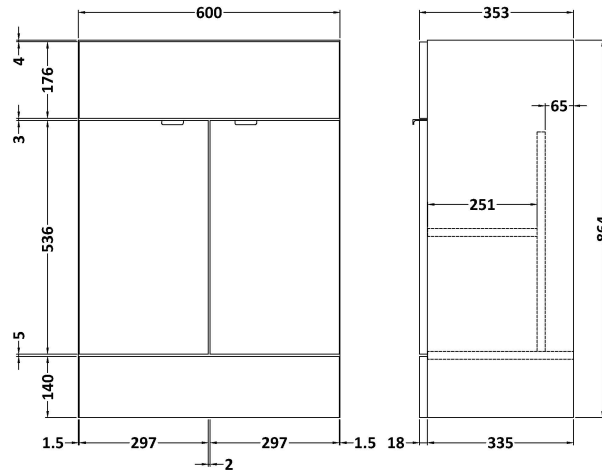


### Packaging Details

Barcode: 5055275887714

Sales Code: OFF508

Description: 600 Vanity Unit (355mm Deep)



### Product Dimensions

|                   |      |
|-------------------|------|
| Height (mm):      | 864  |
| Width (mm):       | 600  |
| Depth (mm):       | 355  |
| Nett Weight (kg): | 20.5 |

### Packaging Dimensions

|                    |     |
|--------------------|-----|
| Height (mm):       | 375 |
| Width (mm):        | 620 |
| Depth (mm):        | 900 |
| Gross Weight (kg): | 21  |

### Packaging Data

|               |                     |
|---------------|---------------------|
| Box Colour:   | Brown Cardboard Box |
| Box Qty:      | 1                   |
| Label Size:   | 100 x 50            |
| Label Colour: | White Label         |
| Label Qty:    | 2                   |

### Outer Box Dimensions (If Applicable)

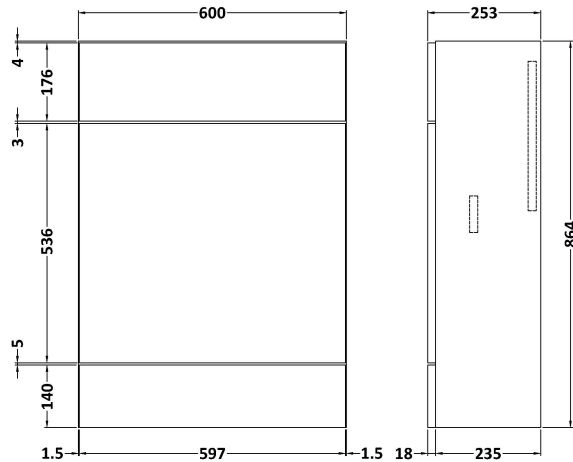
|                    |               |
|--------------------|---------------|
| Height (mm):       |               |
| Width (mm):        |               |
| Depth (mm):        |               |
| Gross Weight (kg): |               |
| Barcode:           | 5055275820209 |

### Product Details

|                         |                              |
|-------------------------|------------------------------|
| Country of Origin:      | United Kingdom               |
| Fitting Instruction:    | Yes                          |
| Certification:          | FSC: Yes CE: N/A             |
| Colour:                 | Brown Grey Avola             |
| Construction Method:    | Cam & Wood Dowel             |
| Construction Type:      | Rigid                        |
| Cabinet Finish:         | MFC Textured Woodgrain       |
| Fascia Finish:          | MFC Textured Woodgrain       |
| Cabinet Thickness (mm): | 18                           |
| Fascia Thickness (mm):  | 18                           |
| Drawer Included:        | No                           |
| Drawer Type:            | Not Applicable               |
| No of Shelves:          | 1                            |
| Hinge Type:             | 95 Degree Clip-On Soft Close |
| Hinge Included:         | Yes                          |
| Adjustable Legs:        | No                           |
| Fixings Included:       | Yes                          |
| Handle Style:           | Contemporary                 |
| Handle Included:        | Yes                          |
| Waste Shroud:           | No                           |
| Handle Type:            | Wrapover                     |

Sales Code: OFF547

Description: 600 Wc Unit (255mm Deep)



### Product Dimensions

|                   |     |
|-------------------|-----|
| Height (mm):      | 864 |
| Width (mm):       | 600 |
| Depth (mm):       | 255 |
| Nett Weight (kg): | 14  |

### Packaging Dimensions

|                    |      |
|--------------------|------|
| Height (mm):       | 290  |
| Width (mm):        | 625  |
| Depth (mm):        | 875  |
| Gross Weight (kg): | 14.5 |

### Packaging Data

|               |                     |
|---------------|---------------------|
| Box Colour:   | Brown Cardboard Box |
| Box Qty:      | 1                   |
| Label Size:   | 100 x 50            |
| Label Colour: | White Label         |
| Label Qty:    | 2                   |

### Outer Box Dimensions (If Applicable)

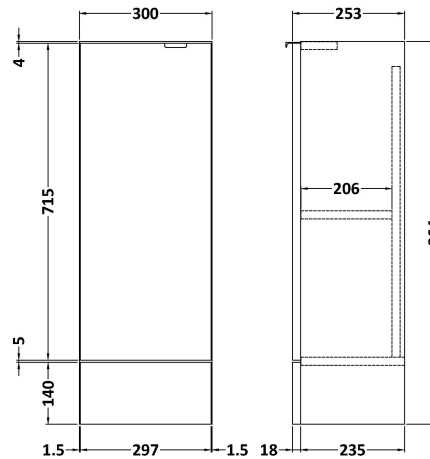
|                    |               |
|--------------------|---------------|
| Height (mm):       |               |
| Width (mm):        |               |
| Depth (mm):        |               |
| Gross Weight (kg): |               |
| Barcode:           | 5055275820049 |

### Product Details

|                         |                        |
|-------------------------|------------------------|
| Country of Origin:      | United Kingdom         |
| Fitting Instruction:    | Yes                    |
| Certification:          | FSC: Yes CE: N/A       |
| Colour:                 | Brown Grey Avola       |
| Construction Method:    | Cam & Wood Dowel       |
| Construction Type:      | Rigid                  |
| Cabinet Finish:         | MFC Textured Woodgrain |
| Fascia Finish:          | MFC Textured Woodgrain |
| Cabinet Thickness (mm): | 18                     |
| Fascia Thickness (mm):  | 18                     |
| Drawer Included:        | No                     |
| Drawer Type:            | Not Applicable         |
| No of Shelves:          | 0                      |
| Hinge Type:             | Not Applicable         |
| Hinge Included:         | No                     |
| Adjustable Legs:        | No                     |
| Fixings Included:       | Yes                    |
| Handle Style:           | Not Applicable         |
| Handle Included:        | No                     |
| Waste Shroud:           | No                     |
| Handle Type:            | Not Applicable         |

Sales Code: OFF581

Description: 300 Base Unit (255mm Deep)



### Product Dimensions

|                   |     |
|-------------------|-----|
| Height (mm):      | 864 |
| Width (mm):       | 300 |
| Depth (mm):       | 255 |
| Nett Weight (kg): | 11  |

### Packaging Dimensions

|                    |      |
|--------------------|------|
| Height (mm):       | 290  |
| Width (mm):        | 325  |
| Depth (mm):        | 875  |
| Gross Weight (kg): | 11.5 |

### Packaging Data

|               |                     |
|---------------|---------------------|
| Box Colour:   | Brown Cardboard Box |
| Box Qty:      | 1                   |
| Label Size:   | 100 x 50            |
| Label Colour: | White Label         |
| Label Qty:    | 2                   |

### Outer Box Dimensions (If Applicable)

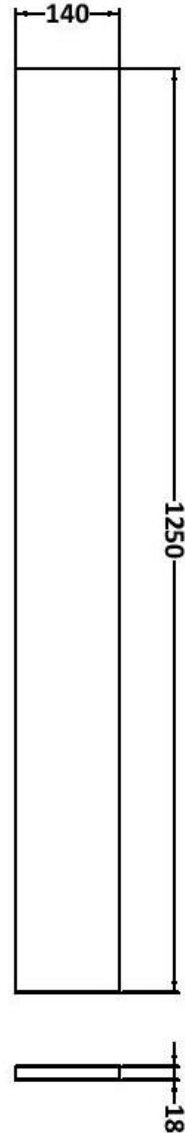
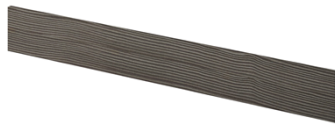
|                    |               |
|--------------------|---------------|
| Height (mm):       |               |
| Width (mm):        |               |
| Depth (mm):        |               |
| Gross Weight (kg): |               |
| Barcode:           | 5055275820063 |

### Product Details

|                         |                              |
|-------------------------|------------------------------|
| Country of Origin:      | United Kingdom               |
| Fitting Instruction:    | Yes                          |
| Certification:          | FSC: Yes CE: N/A             |
| Colour:                 | Brown Grey Avola             |
| Construction Method:    | Cam & Wood Dowel             |
| Construction Type:      | Rigid                        |
| Cabinet Finish:         | MFC Textured Woodgrain       |
| Fascia Finish:          | MFC Textured Woodgrain       |
| Cabinet Thickness (mm): | 18                           |
| Fascia Thickness (mm):  | 18                           |
| Drawer Included:        | No                           |
| Drawer Type:            | Not Applicable               |
| No of Shelves:          | 1                            |
| Hinge Type:             | 95 Degree Clip-On Soft Close |
| Hinge Included:         | Yes                          |
| Adjustable Legs:        | No                           |
| Fixings Included:       | Yes                          |
| Handle Style:           | Contemporary                 |
| Handle Included:        | Yes                          |
| Waste Shroud:           | No                           |
| Handle Type:            | Wrapover                     |

Sales Code: OFF591

Description: 1.25M Continuous Plinth (1250X140x18mm)



### Product Dimensions

|                   |      |
|-------------------|------|
| Height (mm):      | 1250 |
| Width (mm):       | 145  |
| Depth (mm):       | 18   |
| Nett Weight (kg): | 2    |

### Packaging Dimensions

|                    |      |
|--------------------|------|
| Height (mm):       | 20   |
| Width (mm):        | 150  |
| Depth (mm):        | 1260 |
| Gross Weight (kg): | 2    |

### Packaging Data

|               |                     |
|---------------|---------------------|
| Box Colour:   | Brown Cardboard Box |
| Box Qty:      | 1                   |
| Label Size:   | 100 x 50            |
| Label Colour: | White Label         |
| Label Qty:    | 2                   |

### Outer Box Dimensions (If Applicable)

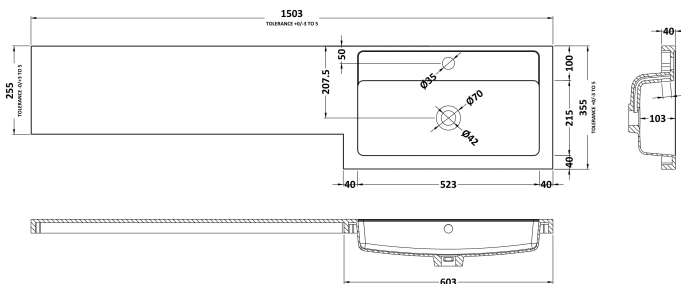
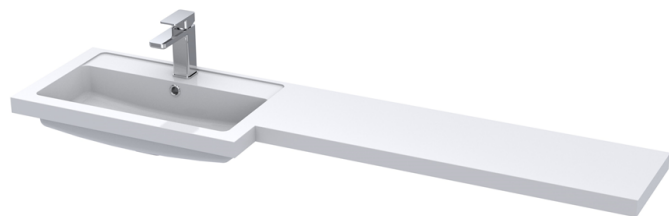
|                    |               |
|--------------------|---------------|
| Height (mm):       |               |
| Width (mm):        |               |
| Depth (mm):        |               |
| Gross Weight (kg): |               |
| Barcode:           | 5055275828380 |

### Product Details

|                         |                        |
|-------------------------|------------------------|
| Country of Origin:      | United Kingdom         |
| Fitting Instruction:    | Yes                    |
| Certification:          | FSC: Yes CE: N/A       |
| Colour:                 | Brown Grey Avola       |
| Construction Method:    | Not Applicable         |
| Construction Type:      | Flat-Pack              |
| Cabinet Finish:         | MFC Textured Woodgrain |
| Fascia Finish:          | MFC Textured Woodgrain |
| Cabinet Thickness (mm): |                        |
| Fascia Thickness (mm):  | 18                     |
| Drawer Included:        | Not Applicable         |
| Drawer Type:            | Not Applicable         |
| No of Shelves:          | Not Applicable         |
| Hinge Type:             | Not Applicable         |
| Hinge Included:         | Not Applicable         |
| Adjustable Legs:        | No                     |
| Fixings Included:       | No                     |
| Handle Style:           | Not Applicable         |
| Handle Included:        | Not Applicable         |
| Waste Shroud:           | Not Applicable         |
| Handle Type:            | Not Applicable         |

**Sales Code:** PMB415L

**Description:** 1500 L Shaped Polymarble Basin Lh



**Product Dimensions**

|                   |      |
|-------------------|------|
| Height (mm):      | 135  |
| Width (mm):       | 1503 |
| Depth (mm):       | 355  |
| Nett Weight (kg): | 21   |

**Packaging Dimensions**

|                    |      |
|--------------------|------|
| Height (mm):       | 190  |
| Width (mm):        | 420  |
| Depth (mm):        | 1570 |
| Gross Weight (kg): | 21   |

**Packaging Data**

|               |                               |
|---------------|-------------------------------|
| Box Colour:   | Brown Cardboard Box - Printed |
| Box Qty:      | 1                             |
| Label Size:   | 100 x 50                      |
| Label Colour: | White Label                   |
| Label Qty:    | 2                             |

**Outer Box Dimensions (If Applicable)**

|                    |               |
|--------------------|---------------|
| Height (mm):       |               |
| Width (mm):        |               |
| Depth (mm):        |               |
| Gross Weight (kg): |               |
| Barcode:           | 5055275812495 |

**Product Details**

|                      |                               |
|----------------------|-------------------------------|
| Country of Origin:   | China                         |
| Fitting Instruction: | No                            |
| Certification:       | CE: No WRAS: N/A WRAS No: N/A |
| Product Material:    | Polymarble                    |
| Fixing Supplied:     | No                            |

**Pans/Bidets:** Trap Style: Not Applicable Includes Seat: Not Applicable

**Seats:** Seat Type: Not Applicable Material: Not Applicable  
Function: Not Applicable Hinge Type: Not Applicable  
Hinge Material: Not Applicable

**Cisterns:** Operating Type: Not Applicable Fittings: Not Applicable  
Lever Type: Not Applicable

**Basins:** Tap Hole: One Taphole Chain Stay Hole: No  
Template: Not Required Waste Type Req: Slotted  
Overflow Inc: Yes Overflow Cover: Yes  
Inner Bowl Depth (mm): 103mm