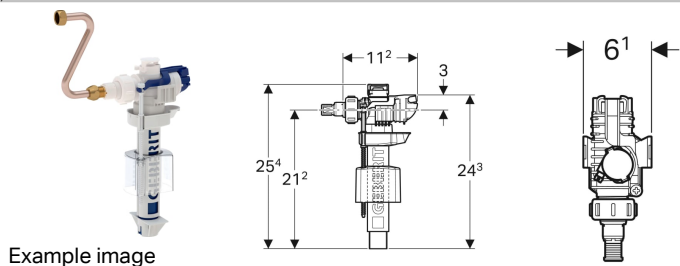


**Geberit fill valve type 380, lateral water supply connection, 3/8", nipple made of brass**



Example image

**Application purposes**

- For installation in exposed cisterns with lateral water supply connection
- For greywater (rainwater) with pH value 6.0–9.5, if a filter system is used
- For ceramic cisterns
- For potable water

**Characteristics**

- Adjustable filling height
- Threaded nipple made of brass
- Water supply connection on the left/right

**Scope of delivery**

- Adaptor for nipple, for fill valve type 350
- Connection pipe made of copper

- Low-noise in accordance with tap group I (DIN 4109)
- With check valve

**Technical data**

Flow pressure	0.1-10 bar
Line noise at 3 bar	12 dB(A)
Line noise at 5 bar	18 dB(A)
Maximum storage temperature	40 °C
Maximum operating temperature, water	25 °C
Calculated flow rate	0.11 l/s
Minimum flow pressure for calculated flow rate	0.5 bar

- Fastening material

**Art. no.**

242.984.00.1



- The filling height can be set by turning the spindle The valve opens after the water level drops by 20 mm Incorporates backflow prevention device Strainer situated inside valve body
- Replacement for 240.705.00.1