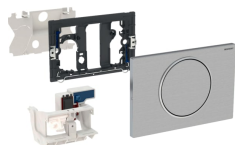


## Geberit WC flush control with electronic flush actuation, mains operation, single flush, flush plate Sigma10, for pull-down rail, radio



Example image

### Application purposes

- For manual remote flush actuation of Geberit Sigma concealed cisterns 12 cm using pull-down rails with RF-controlled button
- For single flush
- For solid and drywall construction
- Suitable for less-abled installation
- For Geberit Sigma concealed cisterns 12 cm
- Not suitable for use with Geberit inserts for in-cistern block

### Characteristics

- Flush actuation using pull-down rail, wireless, radio
- Single flush can be triggered via flush plate
- Cover plates and stop-and-go flush actuators can be mounted
- Power supply via power supply unit
- External power supply unit
- Transformation of mains voltage to extra-low voltage, 4.1 V DC
- Operation with extra-low voltage, no mains voltage in cistern
- With push-fit connection with cross-polarity protection

### Scope of delivery

- Flush plate Sigma10
- Mounting frame
- Protection plate
- Support block with servomotor and lifting device, premounted

### To order additionally

- Geberit installation set for WC flush controls with electronic flush actuation

Art. no.	Colour / surface	Material designation
115.867.SN.5	Plate and button: brushed Design ring: polished	Stainless steel

### Accessories

- Geberit Service Handy



- For use with RF electronic button art. no. 241.568.00.1
- Handrail with RF button by other supplier
- Requires transformer 115.861.00.1

- Interval flush preset
- Adjustable interval flush
- Compatible with Geberit Service Handy
- Functions can be set and queried with the Geberit Service Handy
- Low-noise lifting mechanism
- Electrical lifting device, self-calibrating
- Screwable flush plate

### Technical data

Nominal voltage	85-240 V AC
Mains frequency	50-60 Hz
Operating voltage	4.1 V DC
Radio frequency	868.4 MHz
Radio frequency distance	10 m
Interval flush, adjustment range	1-168 h
Interval flush, factory setting	168 h

- Control electronics with radio receiver
- Actuator rod
- Fastening material