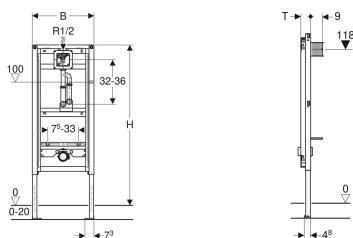


Geberit Duofix frame for urinal, 130 cm, universal, with pipe interrupter



Example image



Application purposes

- For drywall construction
- For installation in part- or room-height prewall installations
- For installation in room-height installation walls
- For installation in part- or room-height Geberit Duofix system walls
- For mounting urinals
- For installation of Geberit urinal flush controls (from year of manufacture 2009)
- For floor constructions 0–20 cm

Characteristics

- Self-supporting frame, powder-coated
- Frame with \varnothing 9 mm drilling holes for fastening in wood frame construction
- Galvanized feet
- Feet adjustable 0–20 cm
- Non-slip leg supports
- Rotatable foot plates
- Foot plate depth suitable for installation in U-profiles UW 50 and UW75 and Geberit Duofix system rails
- Flush bend fitted, with pipe interrupter
- Universal concealed housing for Geberit urinal flush controls

Scope of delivery

- Water supply connection R 1/2"
- Protection box with cover
- Connection pipe between inlet \varnothing 32 mm and urinal, with seal to urinal
- 2 protection plugs
- Straight connector made of PVC, \varnothing 50 mm
- Urinal trap \varnothing 50 mm, with seal on urinal
- 2 threaded rods M8
- Fastening material

Art. no.	B	H	T
111.622.00.1	50 cm	130 cm	7.5 cm

Accessories

- Geberit Duofix set of wall anchors for single installation
- Geberit Duofix set of wall anchors for single and system installation
- Geberit Duofix foot fastener set on rear wall
- Geberit Duofix fastening set for stud clearance 50–57.5 cm
- Geberit Duofix set of foot extensions for floor construction 20–40 cm
- Geberit Duofix set of leg supports with large foot plate



- Refer to your local water authority for further guidance on compliance to UK water regulations
- Urinal compatibility - distance between inlet and outlet no more than 505mm to fit the pipe interrupter
- Suitable for urinals with a push fit inlet connection
- Ensure pipe interruptor drainage connection installation drawing is consulted before installation is attempted
- Can be used for mains or tank fed water supply
- Any boarding must be fixed tight up against the face of the Duofix frame and screwed directly to the frame
- Can be operated with used water (rainwater) provided it is passed through a filter system first

- Terminal for electrical connection in concealed housing
- Water supply connection on the top, on the concealed housing
- Premounted stop valve with throttle
- With built-in conduit pipe to rinse the pipeline
- Protection box for service opening 10.5 x 10.5 cm can be cut to length without tools
- Fastening for inlet \varnothing 32 mm, height-adjustable
- Fastening for connection bend, height-adjustable and sound-absorbing
- Urinal fasteners M8 width- and height-adjustable
- Crossbars with centring marks, adjustable without tools
- Additional fastening possible for urinal with accessories

Technical data

Flow pressure	1-8 bar
Maximum test pressure, water	16 bar
Maximum test pressure, air / inert gas	3 bar
Maximum operating temperature, water	30 °C
Flow rate at 1 bar without flow limiter	0.3 l/s
Flow rate at 1 bar with flow limiter	0.18 l/s