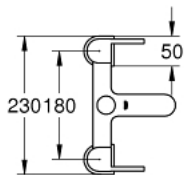
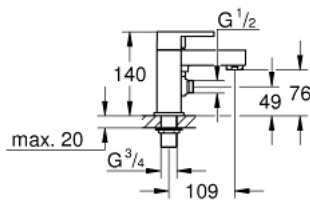


25 133 003 **TWO-HANDLED BATH/SHOWER MIXER 1/2"**

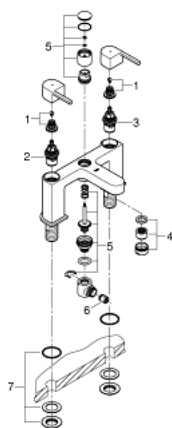


PRODUCT DESCRIPTION

- deck mounted
- metal handles
- Longlife headpart 3/4"
- automatic diverter: bath/shower
- integrated non-return valve in the shower outlet 1/2"
- **recommended pressure 0.2 - 5.0 bar**
- **GROHE StarLight** finish



25 133 003 TWO-HANDLED BATH/SHOWER MIXER ½"



SPARE PARTS, August 2018 – now

- 1: Replacement handle connection kit (Order-nr. 45186000)
- 2: Ceramic headpart 3/4", 180° (Order-nr. 45887000)
- 3: Ceramic headpart 3/4", 180° (Order-nr. 45888000)
- 4: Flow straightener (Order-nr. 46164000)
- 5: Repl.kit f.rotary valve (Order-nr. 48038000)
- 6: Non-return valve (Order-nr. 08565000)