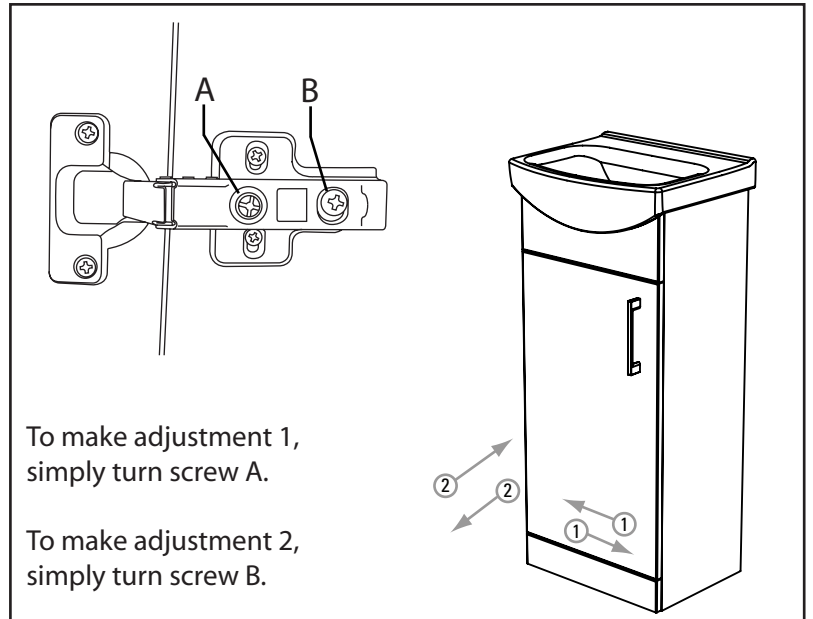
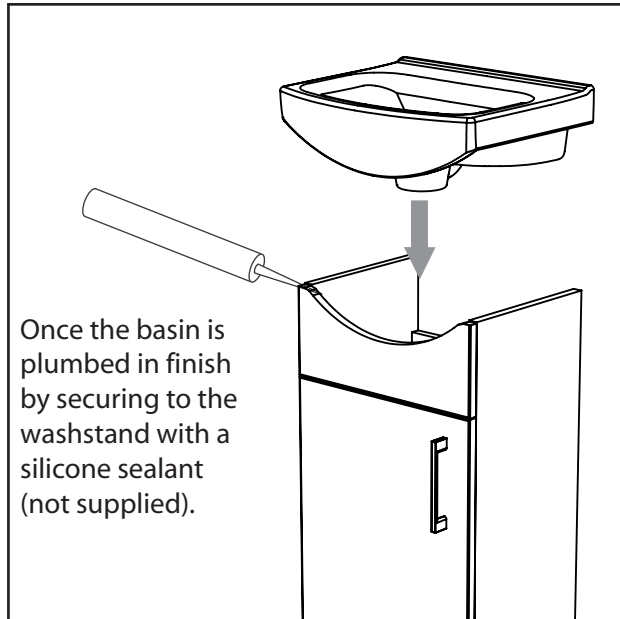


Single Door Unit Installation and Aftercare Instructions

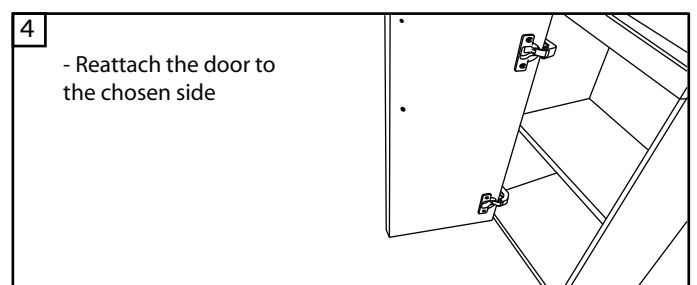
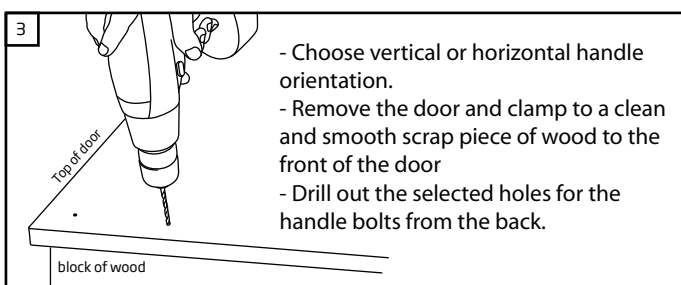
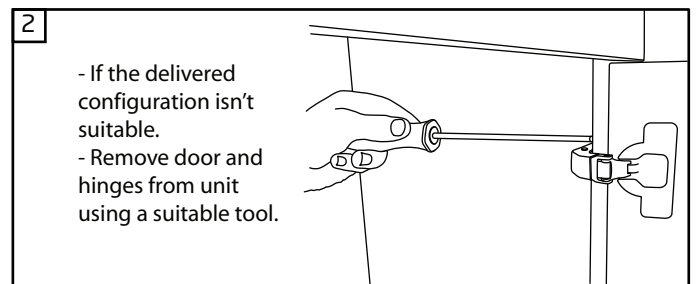
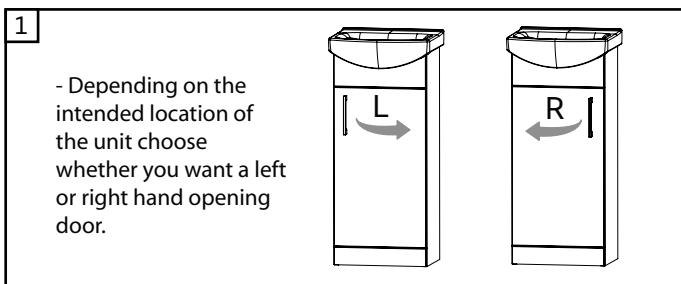
Door and Basin Fitting

Before you start

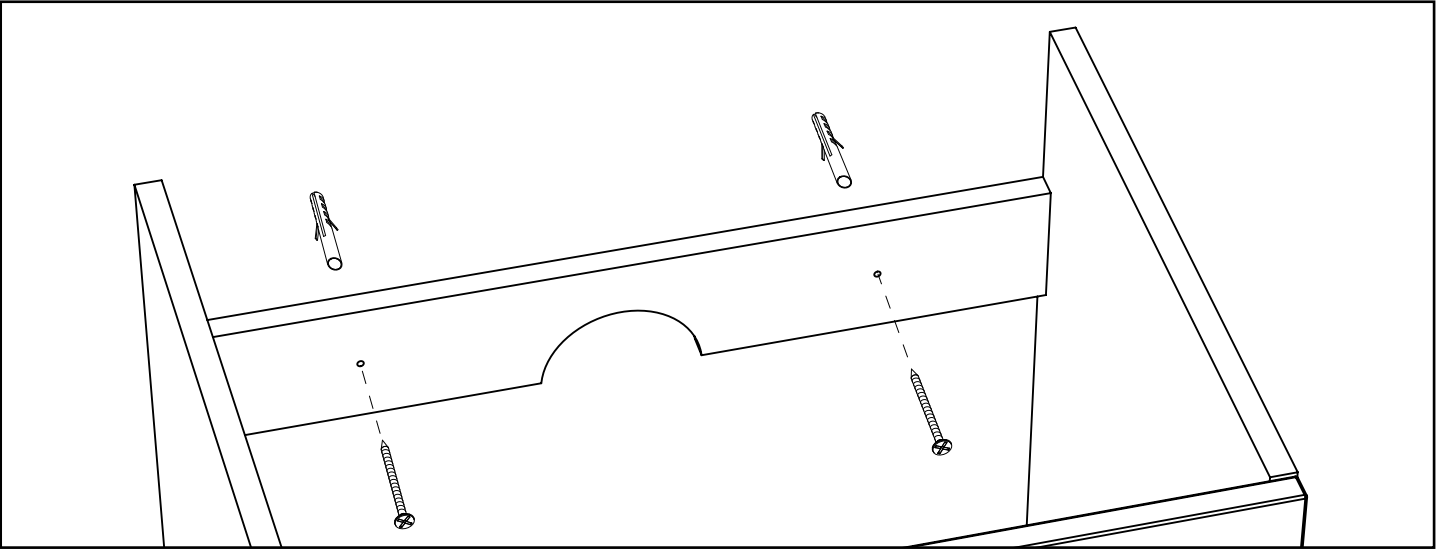
Wear suitable eye protection when drilling. Take care when using power tools near water - the use of a residual current device (RCD) is recommended. Beware of hidden pipes or cables. Take care when drilling tiled surfaces as the drill might slip. Use a piece of masking tape to prevent the drill from wandering.



Door Handing



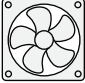





Fixing Unit to Wall



It is recommended to secure floor mounted units to the wall, this can be done by using a screw and wall plug as shown above (fixings not supplied).

Aftercare Instructions

We recommend...		Please DO NOT...	
	Wipe away any water splashes or condensation after use. Excessive exposure to water will deteriorate the furniture.		Do not scrub or scour
	All bathrooms should be well ventilated with a suitable extractor fan.		Do not use abrasive cleaning agents
	Clean with a soft damp cloth only.		
	For removal of lime scale deposits use a suitable proprietary cleaner. If necessary test on an inconspicuous area first.		