

# WC Seats

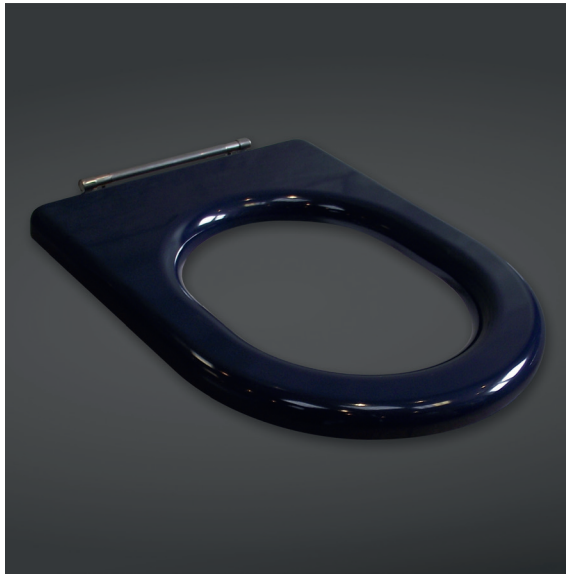
## Compact Special Needs Seat

**RAK**  
CERAMICS

### SPECIFICATION/CODE REFERENCE

Please use the reference codes shown below:

## COMSEATSNBLUE COMPACT RIMLESS in BLUE



SIZE 467 x 360 x 38 mm

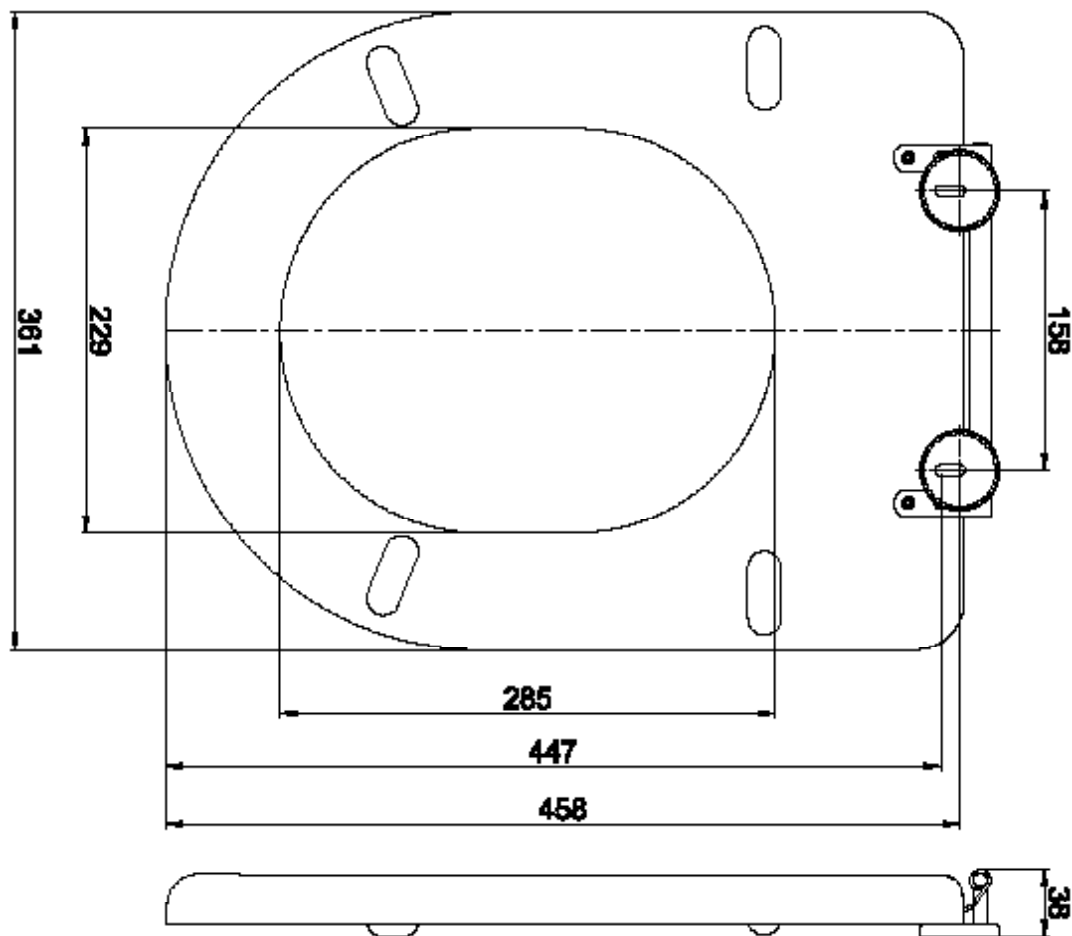
MATERIAL Plastic

WEIGHT 2.50 kg

COLOURS Blue RAL Colour RL

FIXING Seat to Pan Fittings Supplied

WARRANTY Two Years



Dimensions: All measurements are in millimeters and are subject to normal manufacturing variations.

Note: Due to a continuing development programme to improve design and performance, the manufacturer reserves all rights to vary specifications without prior informations. Please note accessories are for photographic use only.

Tel: 01730 237850 Fax: 01730 263210. RAK Ceramics, Bradford House, Frenchmans Road, Petersfield, Hampshire GU32 3AW

Contact us at: [info.uk@rakceramics.com](mailto:info.uk@rakceramics.com) / Visit us at: [www.rakceramics.com](http://www.rakceramics.com) 2019