

Sensorflow Wave basin tap 1 hole (mains)

ILLUSTRATED

A6161 Sensorflow Wave basin tap 1 hole (mains)

OPTIONS

F960970 Remote Control Programmer

ILLUSTRATED PRODUCT DETAILS

Weights

A6161 2.20 KG

Finishes

A6161  Chrome (AA)

Materials

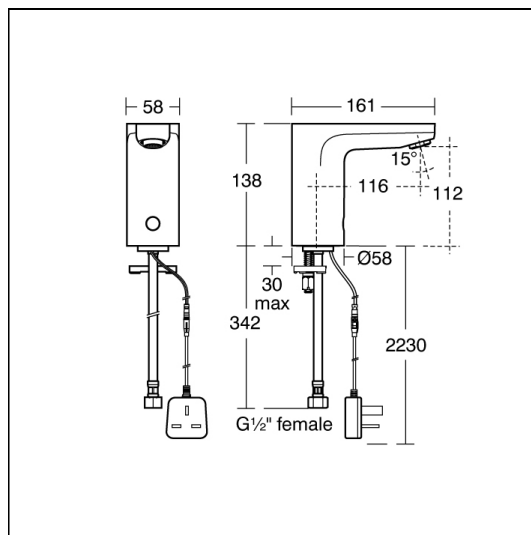
A6161 Chrome Plated

Flow rates

A6161 3.7 Litres per minute @ 3 bar pressure

Special Notes

Run time adjustable up to 4mins. Inlet with flexible tail. Includes isoating valve with strainer and connection for 15mm copper tube. Fitted with a 3.7 lpm Eco aerated flow regulator. When installed in commercial applications a thermostatic blending valve such as A5900AA should be used.



ACCREDITATIONS

A6161(AA)



1707015

FEATURES

