

Sensorflow 21 Tubular 15cm Panel Mounted Spout & Separate Sensor, Link

ILLUSTRATED

A4181 Sensorflow 21 tubular panel mounted 150mm projection spout anti splash or aerated outlet remote panel sensor, copper tube inlets, link

ILLUSTRATED PRODUCT DETAILS

Weights

A4181 2.45 KG

Finishes

A4181  Chrome (AA)

Materials

A4181 Chrome Plated Brass

Flow rates

A4181 3.7 Litres per minute @ 3 bar pressure

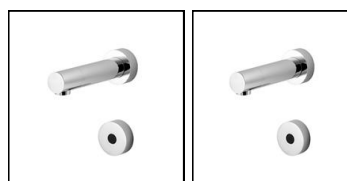
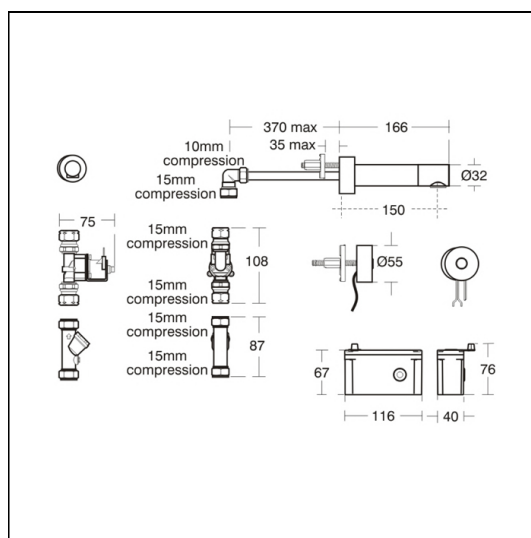
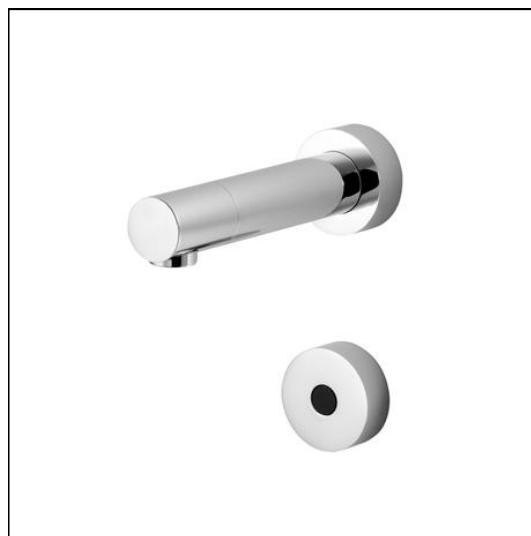
FINISH OPTIONS



Special Notes

Designed to be supplied with pre-mixed water consideration should be given to safe hot water delivery and the use of an appropriate temperature reduction device see A5900. The proximity sensor should be positioned to work in the normal handwashing position. All spouts supplied complete with individual solenoid valve, copper tube inlet and combined servicing valve and filter. Automatically shuts off if sensor is obstructed for a maximum of 55 seconds. Must link to a mains version, alternatively a stand alone battery powered unit is available.

Flow rates regulated to 3.7 Litres per minute.



FEATURES

