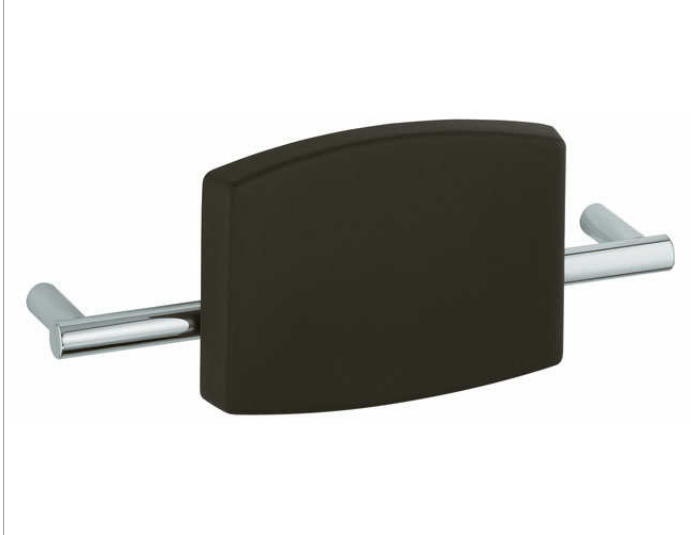


Plan Care

34979000037 Back rest

PRODUCT



DRAWING



PRODUCT ATTRIBUTES

for rail system, hinged

SURFACE

dark grey (RAL 7021)

SPECIFICATIONS

KEUCO PLAN CARE back rest 34979000037
ergonomic back rest made from high quality polyurethane
to clip into wall-mounted bar, cat-no 34979
the dark-grey (RAL 7021) back support is 250 mm high, 350 mm wide
projection including wall-mounted bar 168 mm
the bar is discretely wall-mounted with the provided anti-corrosion
mounting set

the wall-mounted bar has to be ordered separately!