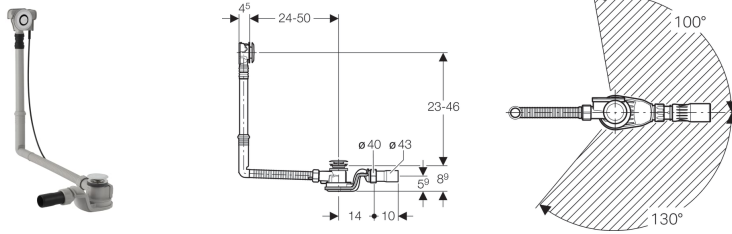


Geberit bathtub drain with push actuation PushControl, d52, length 50 cm, with ready-to-fit-set and straight connector



Application purposes

- For bathtubs made of steel, plastic or cast iron
- For custom-size bathtubs
- For bathtubs with valve hole \varnothing 52 mm

Characteristics

- Quality-monitored in accordance with EN 274-3
- Push actuation aligned with bathtub surface
- With overflow
- Double-sided seals on drain and overflow
- Overflow head with extendible mount can be fastened

Technical data

Discharge rate	1 l/s
Overflow discharge rate	0.65 l/s
Depth of water seal	50 mm

Scope of delivery

- Waste outlet
- Trap
- Straight connector made of PE-HD, \varnothing 43 mm
- Ready-to-fit set
- Protection box
- Fastening material

Art. no.	Surface / colour
150.771.21.1	gloss chrome-plated

Created with Geberit online product catalogue - 21/06/2018