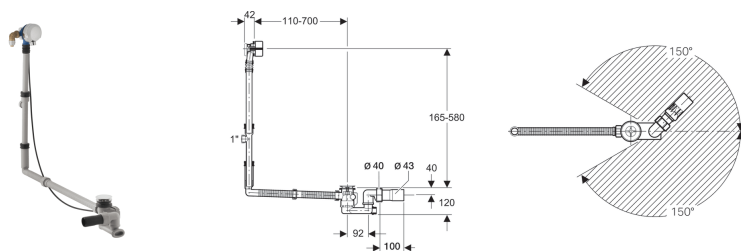


**Geberit bathtub drain with turn handle actuation and inlet, d52, length 70 cm, with ready-to-fit-set and straight connector**



**Application purposes**

- For bathtubs made of steel, plastic or cast iron
- For custom-size bathtubs
- For bathtubs with valve hole  $\varnothing$  52 mm

**Characteristics**

- Quality-monitored in accordance with EN 274-3
- With overflow and inlet
- Inlet jet can be aligned
- Double-sided seals on drain and overflow
- Overflow head with extendible mount can be fastened

**Technical data**

Line noise at 3 bar	15 dB(A)
Sound class	1
Inlet capacity	0.35 l/s
Discharge rate	0.85 l/s
Overflow discharge rate	0.6 l/s
Depth of water seal	50 mm

**Scope of delivery**

- Waste outlet
- Trap
- Overflow head with inlet
- Elbow tap connector 90° with male thread G 3/4" and Euro cone  $\varnothing$  20 cm, rotatable
- T-piece, in overflow
- Straight connector made of PE-HD,  $\varnothing$  43 mm
- Ready-to-fit set
- Protection box
- Fastening material

Art. no.	Surface / colour
150.713.21.1	gloss chrome-plated

**Accessories**

- Geberit connection set for bathtubs made of acrylic, with overflow

Created with Geberit online product catalogue - 21/06/2018