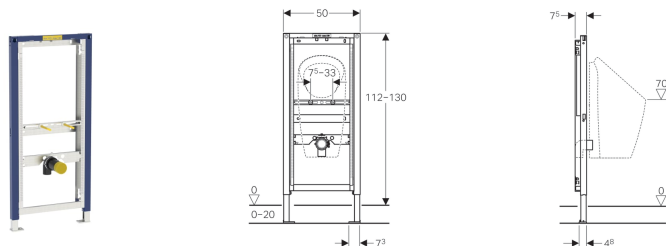


Geberit Duofix frame for urinal, 112–130 cm, universal, for 0-litre urinals



Application purposes

- For drywall construction
- For masonry walls
- For installation in part- or room-height prewall installations
- For installation in room-height installation walls
- For installation in part- or room-height Geberit Duofix system walls
- For installation of waterless urinals
- For Geberit urinals Preda
- For Geberit urinals Selva
- For installation of 1-litre urinals, with accessories
- For floor constructions 0–20 cm

Characteristics

- Self-supporting frame, powder-coated
- Frame with \varnothing 9 mm drilling holes for fastening in wood frame construction
- Galvanized feet
- Feet adjustable 0–20 cm
- Non-slip leg supports
- Rotatable foot plates

Art. no.

111.671.00.1

- Foot plate depth suitable for installation in U-profiles UW 50 and UW75 and Geberit Duofix system rails
- Element height adjustable to urinal, 112–130 cm
- Connection positions for Geberit urinal Preda prepared
- Fastening for connection bend, height-adjustable and sound-absorbing
- Urinal fasteners M8 width- and height-adjustable
- Crossbars with centring marks, adjustable without tools
- Markings for connection positions of Geberit urinals Preda and Selva
- Additional fastening possible for urinal with accessories
- Can be refitted with accessories for urinals Laufen Lema 1-litre Compact and Tamaro-VS NEW 41122

Scope of delivery

- 2 fixing brackets
- Connection bend made of PE-HD, \varnothing 50 / 63 mm
- 2 threaded rods M8
- Fastening material

To order additionally

- Urinal trap

Accessories

- Geberit Duofix set of wall anchors for single installation
- Geberit Duofix set of wall anchors for single and system installation
- Geberit Duofix foot fastener set on rear wall
- Geberit Duofix fastening set for stud clearance 50–57.5 cm
- Geberit Duofix foot extension set for floor construction 20–40 cm
- Geberit Duofix set of feet with large foot plate



- For urinals Preda and Selva the urinal trap is already included in the scope of delivery