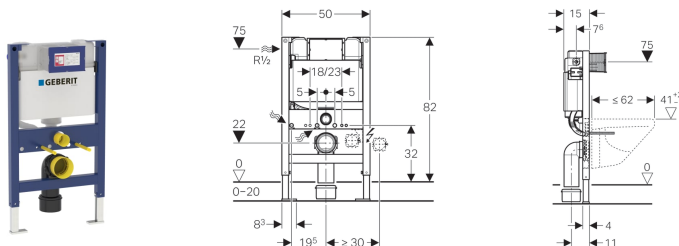


Geberit Duofix frame for wall-hung WC, 82 cm, with Kappa concealed cistern 15 cm



Application purposes

- For drywall construction
- For installation in part-height prewall installations
- For wall-hung WCs with connection dimensions in accordance with EN 33:2011
- For wall-hung WCs with projection up to 62 cm
- For floor constructions 0–20 cm

Characteristics

- Self-supporting frame, powder-coated
- Galvanized feet
- Feet adjustable 0–20 cm
- Concealed cistern with front actuation
- Concealed cistern fully insulated against condensation
- Cistern fulfils standard requirements in accordance with EN 14055, Class II
- Immediate post flush possible with factory setting
- Water supply connection on the left
- Protection cover box for service opening protects against moisture and dirt
- Protection box for service opening can be cut to length without tools

- Equipped with conduit pipe for feed pipe for connection of Geberit AquaClean shower toilets
- With fastening option for electrical connection

Technical data

Flow pressure	0.1-10 bar
Maximum operating temperature, water	25 °C
Flush volume, factory setting	5.8 and 3 l
Flush volume small, adjustment range	3-4 l

Scope of delivery

- Water supply connection Rp 1/2" - R 1/2", compatible with MeplaFix, with integrated angle stop valve and hand wheel
- Protection box for service opening
- 2 wall anchors
- 2 protection plugs
- Connection set for WC, ø 90 mm
- Connection bend 90° made of PE-HD, ø 90 / 110 mm
- Adaptor socket made of PE-HD, ø 90 / 110 mm
- 2 threaded rods M12
- Fastening material

Art. no.

111.260.00.1



- For access the top of the cistern may be cut in accordance with the instructions
- If frame is being installed with bespoke furniture with furniture clips, we would advise that article number 111.837.00.1 is purchased
- Any boarding must be fixed tight up against the face of the Duofix frame and screwed directly to the frame
- To reduce flush volume to either 4.5/3 l dual flush or 4/2.6 l dual flush requires material number 242.310.00.1 (note: must be used with pans designed for low volume flush)
- The cistern can be operated with used water (rainwater) provided it is passed through a filter system first

Created with Geberit online product catalogue - 21/06/2018