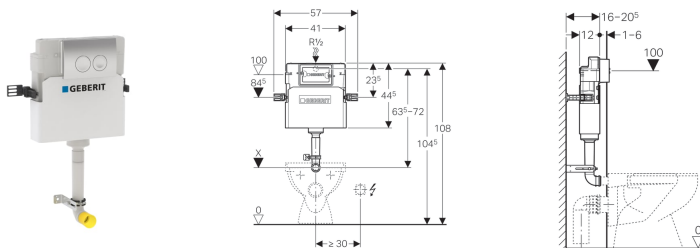


## Geberit Delta concealed cistern 12 cm



### Application purposes

- For drywall construction
- For installation in part- or room-height prewall installations
- For installation in room-height installation walls
- For floor-standing WCs

### Characteristics

- Concealed cistern with front actuation
- Concealed cistern fully insulated against condensation
- Cistern fulfils standard requirements in accordance with EN 14055, Class II
- Immediate post flush possible with factory setting
- Flush bend fitted
- Water supply connection on the rear or top centre
- Connection hose on angle stop valve can be attached without tools

### Technical data

Flow pressure	0.1-10 bar
Maximum operating temperature, water	25 °C
Flush volume, factory setting	5.8 and 3 l
Flush volume small, adjustment range	3-4 l

### Scope of delivery

- Angle stop valve R 1/2", compatible with MeplaFix, with adaptor ring
- Protection box for service opening, made of polystyrene foam
- Flush plate Delta21
- 2 distance bolts
- Flush bend 90°
- Protection plug
- Fastening for flush bend
- 2 fixing brackets
- Fastening material

Art. no.	Surface / colour
109.103.21.1	gloss chrome-plated



- Flush valve features settings to enable either a 6 l and 3 l flush or a 4.5 l and 3 l flush. Note: must be used with pans designed for low volume flush.
- The cistern can be operated with used water (rainwater) provided it is passed through a filter system first.

Created with Geberit online product catalogue - 21/06/2018