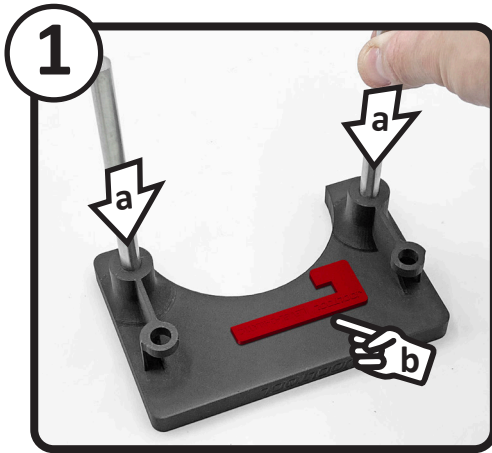
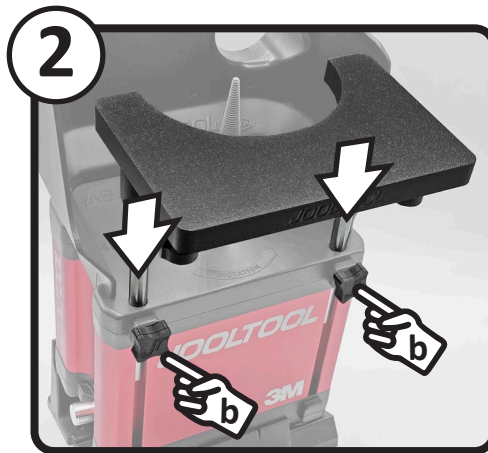


PLATFORM FOR FLAT TOP DISCS

INSTALL THE PLATFORM



- a) Install the RODS into the bottom of the PLATFORM as shown.
- b) Locate the **Red Leveling Tab** for later use (see below)



- a) Slide the PLATFORM assembly into the JOOLOOOL's post holes
- b) Install the KNOBS loosely. Do NOT tighten them yet.

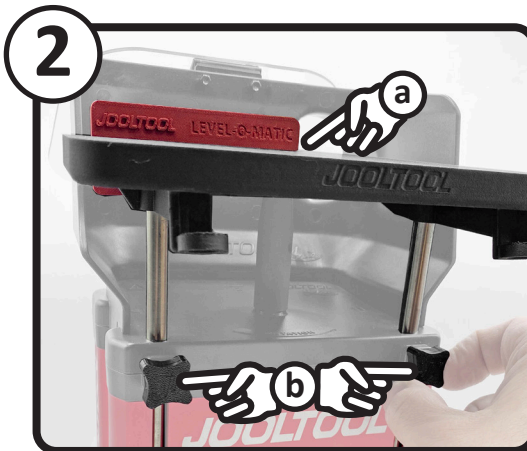


Adjust the height by gently sliding the PLATFORM up or down as needed.

LEVEL THE PLATFORM WITH THE FLAT TOP DISCS (if equipped with Leveling Tab)



Ensure PLATFORM moves freely
With a FLAT TOP DISC installed, Snap the LEVEL-O-MATIC tab into the left notch on the PLATFORM.



- a) Ensure the **Leveling tab** sits flat on the FLAT TOP DISC
- b) Tighten the KNOBS to secure



Remove the **Leveling tab** and enjoy your ROUTER PLATFORM!

ANIE'S TIPS



Use with the WATER TRAY for convenient access to lubrication



Use at Lowest Position Setting when working on See-Thru Discs for Extra Support and Control