

GRIND GUARD SETUP & TIPS

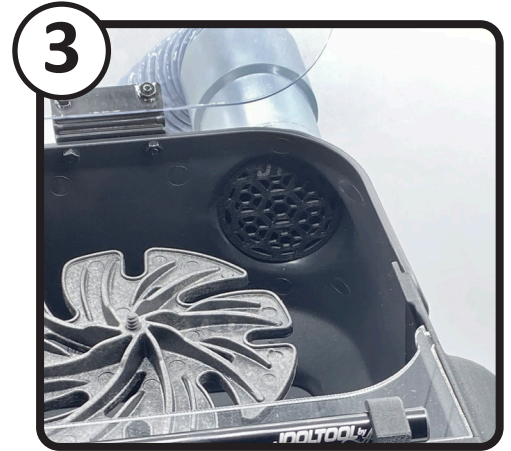
INSTALL THE GRIND GUARD ATTACHMENT



1 Slide the 2 bottom pins of the GRIND GUARD into the JOOLTOOL's corresponding holes as shown.

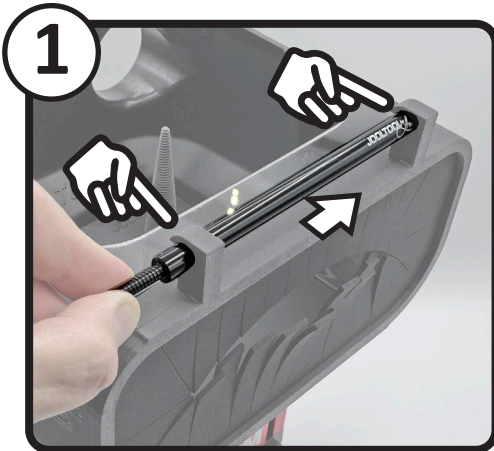


2 Ensure the GRIND GUARD is secure and it meets the HOOD of your JOOLTOOL on all sides.

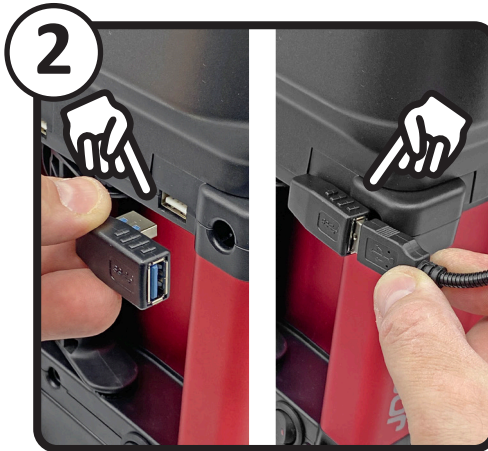


3 Use your GRIND GUARD with the JOOLTOOL PRO VACUUM and VAC SCREEN for the best dust-collection & performance.

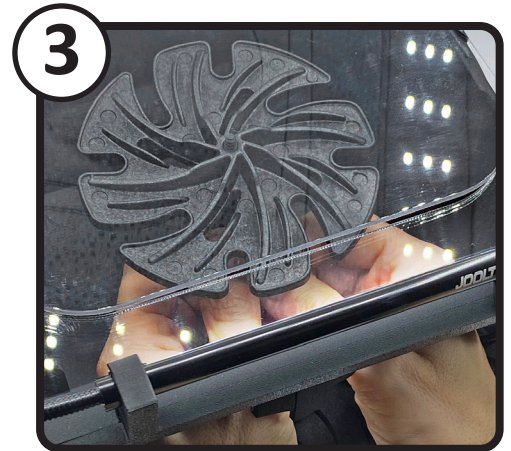
INSTALL THE USB LIGHT



1 Slide the USB Light through both brackets as shown.



2 Insert the Right-Angle USB adapter into your rear USB port, then connect the USB Light to it.



3 Use your GRIND GUARD with the USB Light for the best experience and visibility.

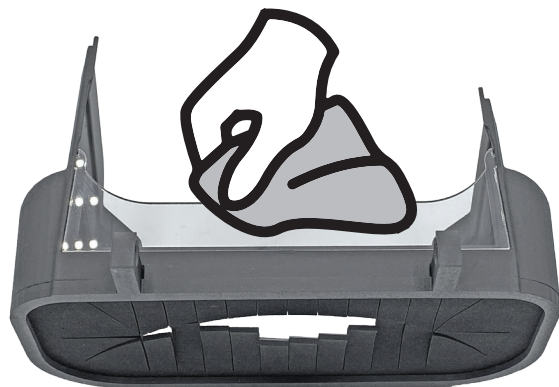
TO UNINSTALL

Simply reverse the installation steps.

MAINTENANCE & CARE

Remove the GRIND GUARD from the JOOLTOOL

- 1 Vacuum any excess dust.
- 2 Wash with warm water and soap.
- 3 Gently wipe dry with a clean microfiber cloth.



DO NOT use harsh chemicals or abrasive pads to clean your GRIND GUARD and acrylic visor.