

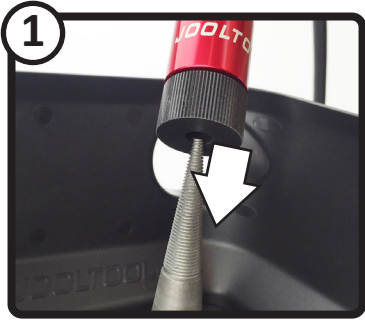
# QUICK-MOUNT FLEXSHAFT

(some items below may be sold separately)

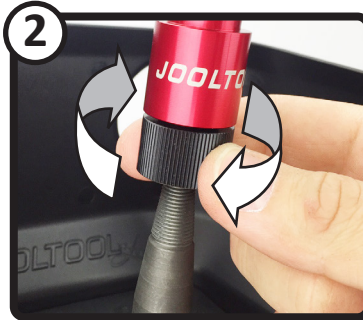
## HOW TO SETUP AND USE

**! FOR SAFETY: POWER "OFF" BEFORE INSTALLING FLEXSHAFT AND/OR ACCESSORIES**

### INSTALL THE FLEXSHAFT



Slide the Flexshaft Connector Hub onto the Jooltool spindle. This is similar to installing Backpads onto the Spindle.



Tighten the connector Hub firmly onto the JOOLTOOL spindle.

### INSTALL/CHANGE A HANDPIECE



**a:** Insert the Flexshaft's Paddle (Key) Tip into Handpiece until it snaps & locks in place.  
**b:** To remove: Pull apart

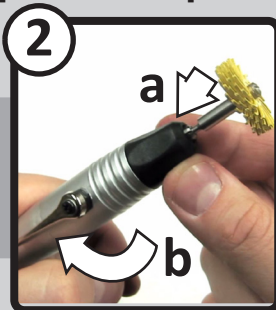


Once installed, test run the JOOLTOOL at various speeds. Rotation should be smooth. If vibration occurs, turn JOOLTOOL off and re-install.

### INSTALL BITS (Type 20 Handpiece)



Position the locking lever perpendicular to Handpiece. This opens the chuck.



a) Insert the desired bit  
b) reset the lever in-line with Handpiece to close & lock.

Item# J-20

### INSTALL BITS (Type 30 Handpiece)



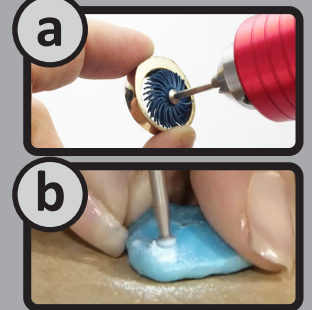
Insert the desired bit into the handpiece chuck/jaw. **Note:** Jaw must be opened wide enough to fit your bit.



Using the chuck key, tighten the jaw. **Note:** Check if the bit is centered by rotating the chuck by hand.

Item# J-30 or J-30H

### USE



a) Use small brushes for intricate sanding and polishing in hard-to-reach areas. b) Use Diamond & Drilling bits on a variety of materials, even stones!

### INSTALL BITS (Type 44 Handpiece)



Insert pin into the Handpiece. Unscrew & remove the collet nut. Use wrench if needed.

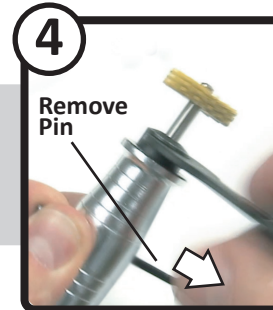


Insert the desired collet into mandrel. **Note:** Collet size must match shaft size of bit.

Item# J-44



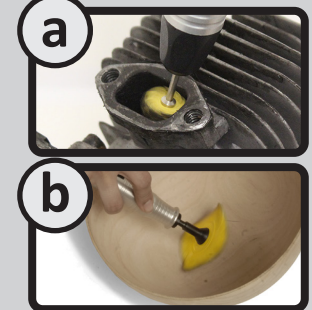
Insert & screw on the collet nut but do NOT tighten yet.



Insert desired Bit into Collet. Tighten Collet with the Wrench.

**! REMOVE PIN BEFORE USE!**

### USE



a) Use small brushes for intricate sanding and polishing in hard-to-reach areas. b) Use 2" or 3" brushes for finishing work on larger projects.