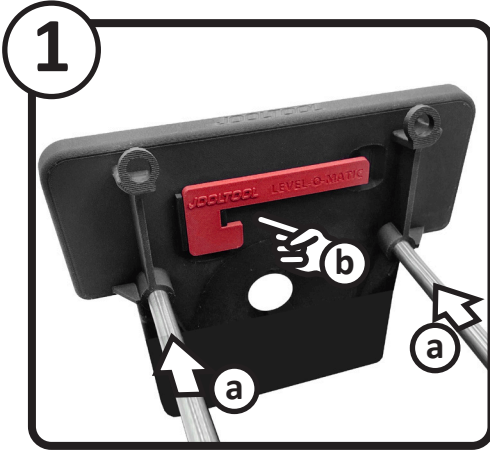


DELUXE PLATFORM SETUP

INSTALL THE PLATFORM



- a) Install the RODS into the bottom of the PLATFORM as shown.
- b) Locate the **Leveling tab** for later use (see below)



- a) Slide the PLATFORM assembly into the JOOLTOOL's post holes
- b) Install the KNOBS loosely. Do NOT tighten them yet.

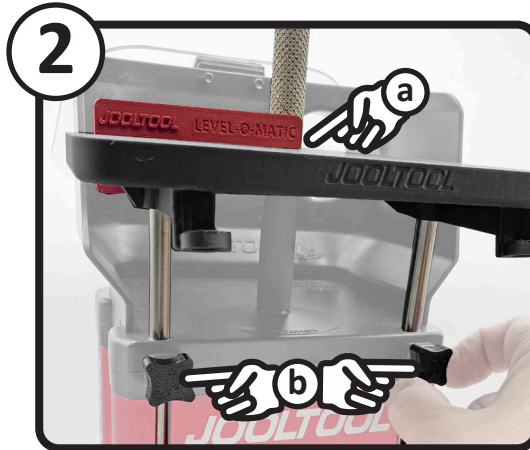


- a) Adjust the height by gently sliding the PLATFORM up or down as needed.
- b) Tighten the KNOBS to secure platform in place.

LEVEL THE PLATFORM FOR USE WITH THE SANDING MANDREL (MAY BE SOLD SEPARATELY)



- Ensure PLATFORM moves freely**
- a) Install the SANDING MANDREL
- b) Snap the **Leveling tab** into the left notch on the PLATFORM.

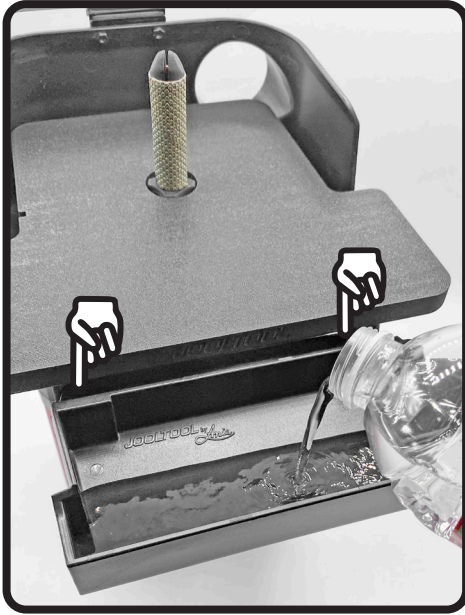


- a) Ensure the **Leveling tab** sits flat on the base of the Mandrel. (The top of the protruding part)
- b) Tighten the KNOBS to secure



- Remove the **Leveling tab** and enjoy your ROUTER PLATFORM!

WATER TRAY



Use with the WATER TRAY for convenient access to lubrication. It attaches to the two eyelets located under the PLATFORM.

CHANNEL CUTS FOR WIRE WRAPPING



Set the platform at a low setting and install the SAVE-YOUR-HANDS tool with the DIAMOND CUTTING DISCS.



Adjust the PLATFORM height as needed for Consistent Channel Cuts in Stones for Wire-Wrapping.

HAND-REST SETTING



Use at Lowest Position Setting when working on See-Thru Discs for Extra Support and Control

VACUUM TIP DOCK



The rear of the PLATFORM has a convenient docking notch for the TIP of your JOOLTOOL PRO-VACUUM HOSE. Use it at the Highest Positions above your JOOLTOOL's HOOD.