

ANVIL TIP SET INSTRUCTIONS

HOW TO SETUP AND USE THE FOREDOM HAMMER ANVIL TIP SET

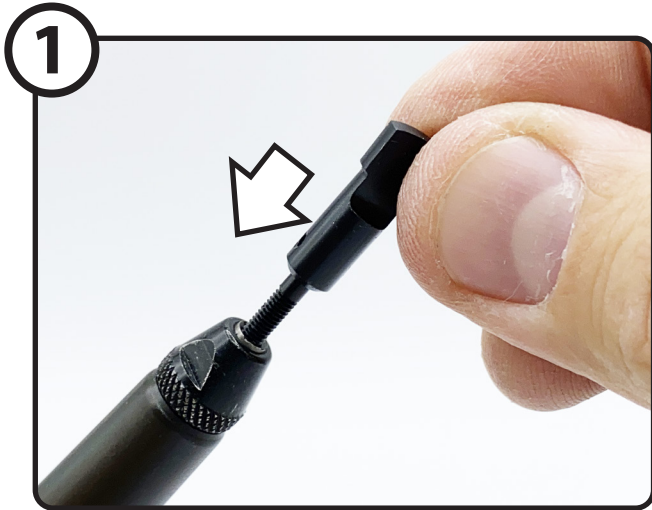
JOOLOOOL *by Anie*



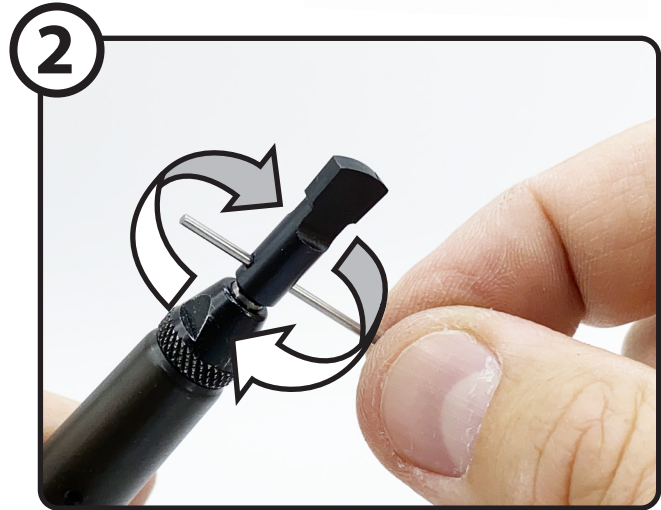
SAFETY FIRST!
Always wear eye and
respiratory protection.

Use these ANVIL TIPS on the Pro Hammer Handpiece by **FOREDOM**[®] mounted on your JOOLTOOL PRO-FLEXSHAFT.

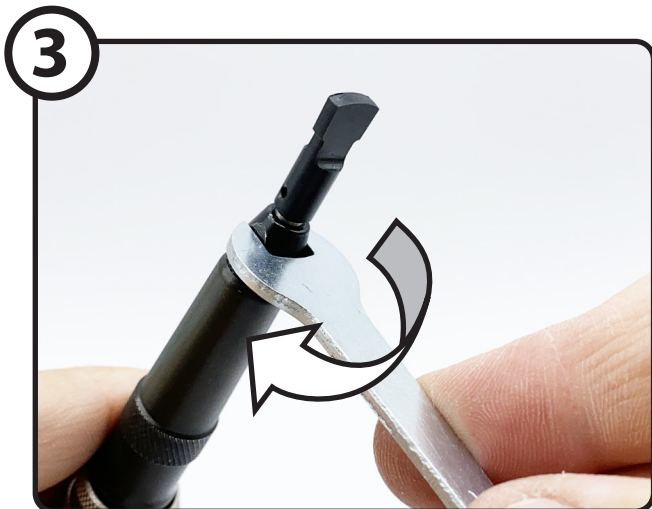
They're great for Carving, Engraving, Hammering, Chiseling & more!



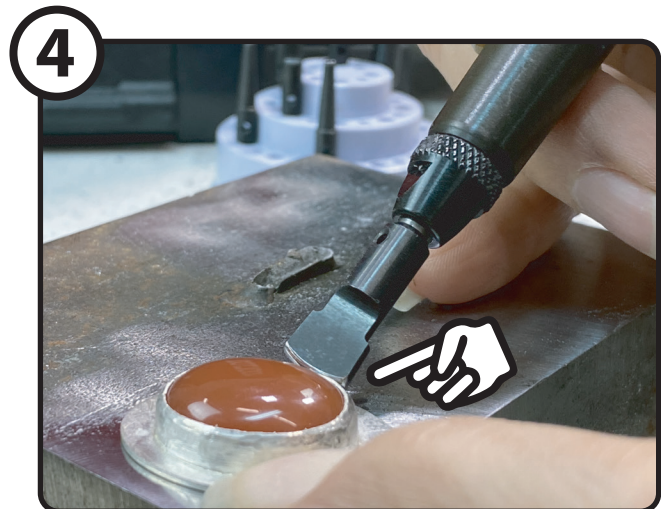
1
INSERT THE ANVIL TIP
into the receiving hole of the
HAMMER HANDPIECE



2
SCREW THE ANVIL TIP into the
HAMMER HANDPIECE, turning clockwise.
Use the included PIN if more leverage is needed.



3
TIGHTEN THE ANVIL TIP
onto the HAMMER HANDPIECE,
turning clockwise with the
WRENCH included in your
HANDPIECE's packaging.



4
USE THE ANVIL TIPS at any desired
speed setting of your JOOLTOOL MACHINE.
The Reciprocating motion does the work;
you simply guide the tip as needed.