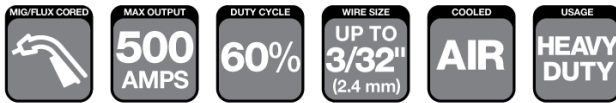


# Classic No. Series

## Classic® No.5 500 AMP MIG Gun Air-Cooled



### WELDING PROCESSES:

MIG (GMAW), Aluminum (GMAW)

### Standard Options Include:

- Standard Conductor Tube – Part No. 65J-60 (Stock No. 1650-1111) on all guns over 15 ft (4.6 m)
- Part No. 65J-45 (Stock No. 1650-1110) on all guns over 15 ft (4.6 m)
- Conduit Liner – 45 Series

### Industry

- Ship and Offshore Yards
- Repair and Maintenance
- Steel Industry
- Industrial and General Fabrication
- Automotive

### FEATURES

- **The Industry Standard** for over 40 years
- **Oval-Shaped Handle** reduces grip required to manipulate MIG gun and eases operator fatigue
- **High-Impact Crush-Resistant Handle** uses special plastic composition for long-lasting durability and dependability
- **Heavy Duty Handle** balanced to pivot at center for ease of use in different welding positions
- **Metal Jacketed Three-Layer Conductor Tube Construction** (copper tube/silicon-resin glass insulator/metal jacket) for improved electrical conductivity
- **Trigger Contains Silver Plated Contacts** with self-cleaning action every time it is engaged or disengaged
- **Heavy Duty Design** for dependable industrial applications
- **Field Repairable Cablehoz®** requires no additional connectors
- **Gun Hanger** located at bottom for convenience of resting the gun when not in use
- **Split Handle Case** provides access for easy repairs
- **Improved Performance** with longer life consumables
- **Wide Selection** of front end consumables available
- **Front and Rear Steel Spring Strain Relief** provides support to the Cablehoz coming out of the rear of the handle and minimizes wire feed issues
- **Heavy Duty Contact Tips** in high heat applications offered
- **Interchangeable Front End Consumables** between Tweco® Classic No. and Tweco Spray Master® series

# CLASSIC NO.5 500 AMP

SPECIFICATIONS	
Description	Classic No.5 500 Amp
Welding Output CO2 Gas	500 A at 60%
Wire Diameter, Mild Steel	Up To 3/32" (2.4mm)
Wire Diameter, Stainless	Up To 3/32" (2.4mm)
Wire Diameter, Flux Core	Up To 3/32" (2.4mm)
Certification Mark (Standards)	CE IEC 60974-7
Operating Temperature	-10 to +40 °C
Cable Length	10 ft. (3 m), 15 ft. (4.6 m) and 25 ft (7.6 m)

## Tweco® Style Rear Connector

Adapter kits are available to fit Tweco rear connection to most wire feeders

Wire Size	Length	Part No.	Stock No.
Up To 1/16" (1.6 mm)	15 ft (4.6 m)	515-116	1050-1113
	25 ft (7.6 m)	525-116	1050-1115
Up To 3/32" (2.4 mm)	10 ft (3 m)	510-332	1050-1131
	15 ft (4.6 m)	515-332	1050-1133

## Lincoln® Style Rear Connector

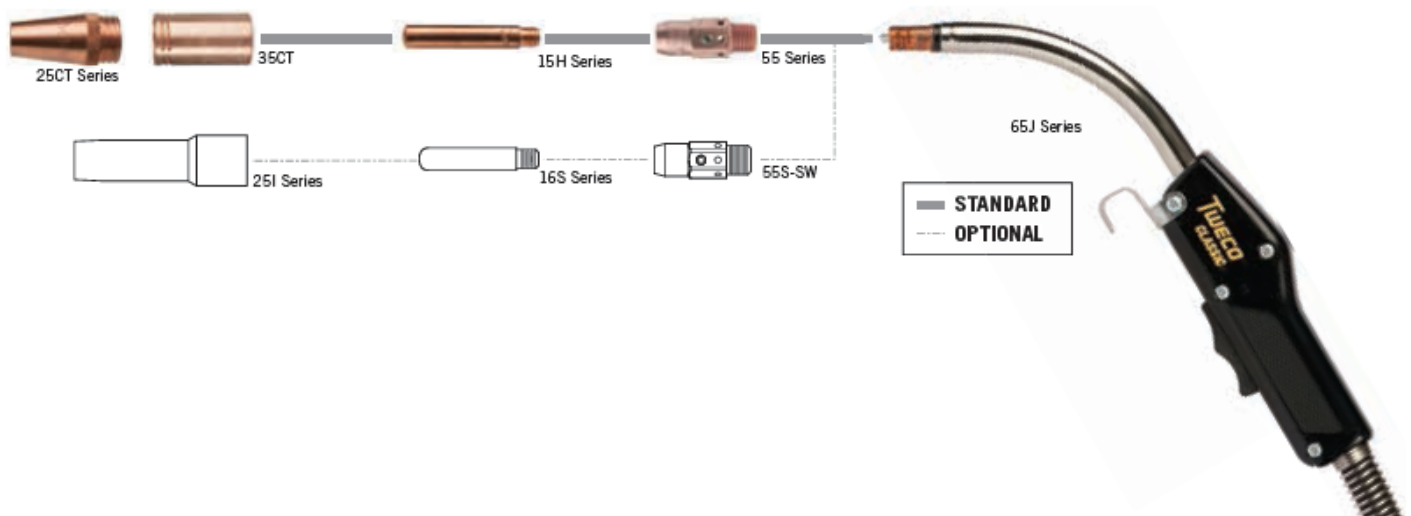
Fits Lincoln LN7, 8, 9, SP200

Wire Size	Length	Part No.	Stock No.
Up To 3/32" (2.4 mm)	15 ft (4.6 m)	L515-332	1050-1642

Some Lincoln wire feeders are assembled with their K1500-2 gun receiving bushing that will accept Tweco Style MIG Guns direct from the factory. Control wire Part No. MS354-DSLJ (Stock No. 2060-2137) Must be ordered separately.

## Miller® Style Rear Connector

Wire Size	Length	Part No.	Stock No.
Up To 1/16" (1.6 mm)	15 ft (4.6 m)	M515-116	1050-1173
Up To 3/32" (2.4 mm)	15 ft (4.6 m)	M515-332	1050-1175



# CLASSIC NO.5 500 AMP SERIES

## Contact Tips – Standard Threaded Style

### 15H & 15HFC Series

0.345" (8.8 mm) Outside Diameter – .3125-24 UNF Threads, 15H & 15AH Series –  
1.970" Overall Length; - 1.590" Overall Length  
25 Per Pack



Wire Size (in / mm)	Tip I.D. (in / mm)	Standard		Heavy Duty	
		Part No.	Stock No.	Part No.	Stock No.
.035" (0.9 mm)	.044" (1.12 mm)	<b>15H-35</b>	1150-1202	NA	
.045" (1.2 mm)	.054" (1.37 mm)	<b>15H-45</b>	1150-1204	<b>15HFC-45</b>	1150-1254
.052" (1.3 mm)	.064" (1.65 mm)	<b>15H-52</b>	1150-1205	<b>15HFC-52</b>	1150-1255
1/16" (1.6 mm)	.073" (1.85 mm)	<b>15H-116</b>	1150-1206	<b>15HFC-116</b>	1150-1256
5/64" (2.0 mm)	.090" (2.29 mm)	<b>15H-564</b>	1150-1209	<b>15HFC-564</b>	1150-1259
3/32" (2.4 mm)	.106" (2.67 mm)	<b>15H-332</b>	1150-1210	<b>15HFC-332</b>	1150-1260
7/64" (2.8 mm)	.120" (3.05 mm)	<b>15H-764</b>	1150-1211	<b>15HFC-764</b>	1150-1261
1/8" (3.2 mm)	.144" (3.66 mm)	<b>15H-18</b>	1150-1212	<b>15HFC-18</b>	1150-1262
3/64" AL (1.2 mm)	.059" (1.50 mm)	<b>15AH-364</b>	1150-1213	NA	
1/16" AL (1.6 mm)	.082" (2.08 mm)	<b>15AH-116</b>	1150-1214	NA	

## Nozzles & Nozzle Insulators – Air-Cooled

### 25CT Series

Coarse Thread Nozzle - 1.080" (27.4 mm) Outside Diameter at the knurled flat section  
Use with Nozzle Insulator Part No. 35CT (Stock No. 1350-1400).  
2 per pack



Nozzle Style	Bore Diameter	Part No.	Stock No.	Nozzle Design	Nozzle/Contact Tip Relationship
Thread-On	1/2" (12.7 mm)	<b>25CT-50</b>	1250-1410	<b>Standard</b>	1/8" (3.2 mm) Tip Recess
	5/8" (15.9 mm)	<b>25CT-62</b>	1250-1420	<b>Standard</b>	1/8" (3.2 mm) Tip Recess
	3/4" (19.5 mm)	<b>25CT-75</b>	1250-1430	<b>Standard</b>	1/8" (3.2 mm) Tip Recess

## Conductor Tubes – Air-Cooled

### Classic No. 5

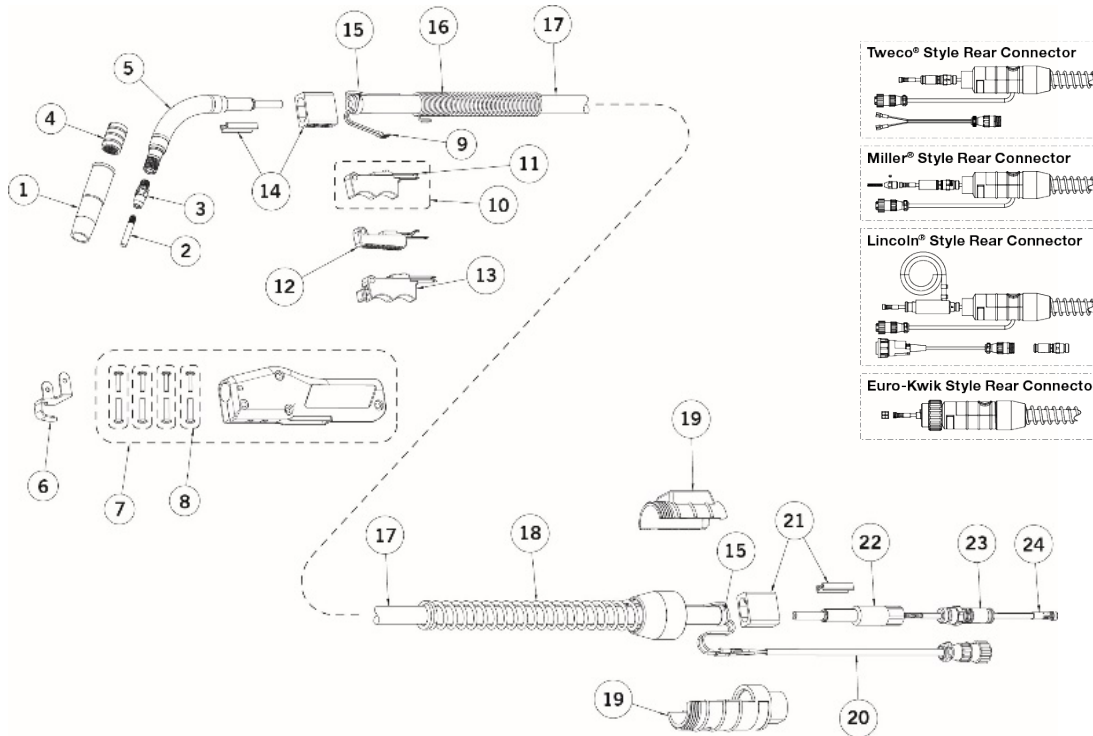
Description	Part No.	Stock No.	Outer Jacket Material	Back End Threads	Front End Threads
60 Degree with 5" (127 mm) Radius	<b>65J-60</b>	1650-1111	Metal	I.D. 7/16"-20 UNF-2B	I.D. 7/16"-20 UNF-2B O.D. 5/8"-18 UNF-2A
45 Degree with 5" (127 mm) Radius	<b>65J-45</b>	1650-1110	Metal	I.D. 7/16"-20 UNF-2B	I.D. 7/16"-20 UNF-2B O.D. 5/8"-18 UNF-2A
180 Degree, Straight	<b>65J-180</b>	1650-1113	Metal	I.D. 7/16"-20 UNF-2B	I.D. 7/16"-20 UNF-2B O.D. 5/8"-18 UNF-2A

## Conduit Liners – For Use With Steel Welding Wires

### 500-650 Amp – Steel Wound

Wire Size	Length	Part No.	Stock No.
.035" - .045" (0.9 - 1.2 mm)	<b>15 ft (4.6 m)</b>	<b>45-3545-15</b>	1450-1103
.052" - 1/16" 1.3 - 1.6 mm)	<b>15 ft (4.6 m)</b>	<b>45-116-15</b>	1450-1113
.052" - 1/16" (1.3 - 1.6 mm)	<b>25 ft (7.6 m)</b>	<b>45-116-25</b>	1450-1115
5/64" (2.0 mm)	<b>15 ft (4.6 m)</b>	<b>45-564-15</b>	1450-1123
5/64" (2.0 mm)	<b>25 ft (7.6 m)</b>	<b>45-564-25</b>	1450-1125
3/32" (2.4 mm)	<b>15 ft (4.6 m)</b>	<b>45H-332-15</b>	1450-1133
7/64" (2.8 mm)	<b>15 ft (4.6 m)</b>	<b>45H-764-15</b>	1450-1143
1/8" (3.2 mm)	<b>15 ft (4.6 m)</b>	<b>45-18-15</b>	1450-1153

# Replacement Parts



#	Description	Classic No. 5
		Part No./ Stock No.
1	Nozzle	Refer To Page 3
2	Contact Tip	Refer To Page 2
3	Diffuser	55SW 1550-1101
4	Nozzle Insulator	--
5	Conductor Tube	Refer To Page 3
6	Gun Hanger	154B 2040-2156
7	Handle (Standard)	85RC 2050-2088
	Handle (Dual Schedule)	--
8	Binder Posts & Screws	124FM 2040-2124
9	Trigger Control Wire Terminal (Standard - 2 ea.)	244 2040-2224
	Trigger Control Wire Terminal (Dual Schedule - 4 ea.)	--
10	Trigger Assembly (Standard)	94RR 2040-2098
11	Trigger Blades	94RC 2040-2100
12	Trigger Assembly (Dual Schedule)	94RDS 2040-2101
13	Trigger Assembly (Locking)	94R-L 2040-2102
14	Front Cable Connector	104 2040-2104

#	Description	Classic No. 5
		Part No./ Stock No.
15	Cable Clamp	136 2060-2690
16	Front Strain Relief Spring	145-6-SPR 2050-2147
17	Cablehoz®	500 1750-2100
18	Rear Strain Relief Spring	235RSSR 2060-2035
19	Rear Case (Direct Plug)	R6RC 2060-2040
	Rear Case (Euro)	X6RC 2060-2006
20	Control Wire (Standard)	MS354-DSM 2060-2140
	Control Wire (Dual Schedule)	194DS 2040-2195
21	Rear Cable Connector (Direct Plug)	104 2040-2104
	Rear Cable Connector (Euro)	--
22	Adapter (Direct Plug)	M170-5H 2020-2167
NS	Repair/Conversion Kits	85R-CK 2050-2089
23	Connector Plug	--
24	Conduit Assembly	Refer To Page 3
NS	Protective Cable Wrap, 50 ft (15.2 m) per box	TCR50 9900-1150



ESAB / esab.com

