



STANDARD FEATURES

- Economical feeder/gun combination eliminates need for additional wire feeder
- Lightweight design reduces operator fatigue
- 50' hose/cable assembly offers maximum portability for remote operation
- Operation simplified by wire speed control on gun
- Mechanical pre-flow and post-flow control
- Operator safety provided by plastic housing and low voltage operation

For appropriate control boxes see pages 7 & 8.



Model AEC 200 comes complete with gun, nozzles, liners, contact tubes, a wrench and 50' of cable hose assembly. Also available in other lengths.

Model AEC 200 Ratings

Current (D.C.R.P.)	Duty Cycle	Gas
200 Amps	100%	Argon or Helium
250 Amps	50%	Argon or Helium
275 Amps	30%	Argon or Helium
300 Amps	100%	Carbon Dioxide

The AEC 200 gun is available with three separate component packages according to the wire type and size. The chart below gives recommendations.

THE SELECTION CHART

MODEL NO.	WIRE SIZE	TYPE	MOTOR RATIO	NOZZLE I.D.	TIP & LINER
AEC 200-36	.030-3/64"	Aluminum	36:1	11/16"	3/64"
AEC 200-64	.035-3/64"	Aluminum	64:1	11/16"	3/64"
AEC 200-81	.035 & .045	Hard	81:1	11/16"	.035
AEC 200-36P	.030-3/64"	Aluminum	36:1	11/16"	3/64"
AEC 200-64P	.035-3/64"	Aluminum	64:1	11/16"	3/64"
AEC 200-81P	.035 & .045	Hard	81:1	11/16"	.035
AEC 200-36L*	.030-3/64"	Aluminum & Hard	36:1	11/16"	3/64"
	.030-.035				

P = Gun with 10 pin amphenol plug (Direct mount Spool Gun for Aircro® 10 pin receptacle and PROFAX Power Sources)

*L = Gun with 8 pin amphenol plug (Direct mount Spool Gun for Esab® (L-Tec) Migmaster 250. Comes complete w/30' cable hose assembly.)

The AEC 200L is a modified gun to direct connect to the ESAB® (L-TEC®) MigMaster 250 and the ESAB® Mig-28A control module.

DIRECT CONNECT Solid State Spool Gun

The AEC 200-4D Direct Connect is designed to give **Solid State Performance** to a Spool Gun that will connect to the Constant Voltage power sources listed below **without the need of a control box.**

DESIGN FEATURES:

- **Direct Connects** to CompArc®, Miller®, Thermal Arc® and "PROFAX" Constant Voltage power sources.
- **No Control Box** - Interfaces Direct to Power Source.
- Operates on **24 VAC**
- **One Motor** for .030 - 1/16" Aluminum and .023 - .045 Hard wires.
- **No More Changing Motor Ratio's**
- **20 to 800 ipm** Speed Range.
- **50'** Cable Length Standard.
- **Solid State** Control Provides:
 - True Constant Speed
 - Higher Motor Torque at all Speeds
 - Compensates for Input Voltage Fluctuations
 - Longer Motor Life
 - Smoother Wire Feeding



DIRECT CONNECT SPOOL GUN SYSTEMS

MODEL NO.	DESCRIPTION
AEC 200-4DM	Direct connect spool gun for CompArc®, Miller® and Thermal Arc® constant voltage power sources with the 14 pin wire feeder receptacle. Note: Used on Millermatic® 300 (before S/N LA000202)
AEC 200-4DMX	Direct connect spool gun for the Millermatic® 250X & Millermatic® 300 (after S/N LA000202)
AEC 200-4DP	Direct connect spool gun for "PROFAX" power sources

SPECIFICATIONS

INPUT POWER	WELD OUTPUT RATING ARGON	WIRE CAPACITY	WIRE SPEED RANGE
24VAC	250 amps - 50% duty cycle 200 amps - 100% duty cycle	.030 - 1/16" aluminum .023 - .045 hard wire	20 ipm to 800 ipm

This system can be connected to any adequately sized constant voltage welding power source that provides 24 VAC auxiliary power and a contact closure contactor circuit. See owners manual or consult factory for complete details.



PROFAX HAS GIVEN THE **CLASSIC** DESIGN OF THE AEC 200 SPOOL GUN A NEW **SOLID STATE** PUNCH. DESIGNED FOR CONSTANT VOLTAGE POWER SOURCES, THIS NEW PUNCH WILL PROVIDE:

- **ONE MOTOR** FOR .030 THROUGH 1/16" ALUMINUM AND .023 THROUGH .045 HARD WIRES.
- **NO MORE CHANGING MOTOR RATIO'S**
- **NO MORE RHEOSTAT TO GET HOT OR BURN OUT**
- **30 TO 800 INCH PER MINUTE CAPABILITY**
- **50' GUN CABLE LENGTH STANDARD**
- **SOLID STATE CONTROL PROVIDES:**
TRUE CONSTANT SPEED
HIGHER MOTOR TORQUE
LONGER MOTOR LIFE
SMOOTHER WIRE FEEDING



SOLID STATE SPOOL GUN SYSTEM

MODEL NO.	DESCRIPTION
AEC 200-4	Spool Gun w/50' cable assembly for use w/ AEC 200-4C solid state control box
AEC 200-4C	Solid state control box for use w/ AEC 200-4 Spool Gun

SPECIFICATIONS

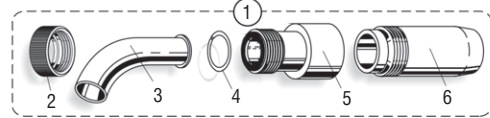
INPUT POWER	WELD OUTPUT RATING ARGON or HELIUM	WIRE CAPACITY	WIRE SPEED RANGE	DIMENSIONS	WEIGHT GUN & CABLES
115VAC 50/60 Hz.	250 Amps 50% Duty Cycle	.023 in. through 1/16" Aluminum	30 IPM to 800 IPM	Height 8.25" Width 3" Length 15"	Net 26 lbs. Ship 29 lbs.
	200 Amps 100% Duty Cycle	or .023 in. through .045 Hard Wire			4C Control Net 7.5 lbs. Ship 9 lbs.

The AEC 200-4 Spool Gun and AEC 200-4C control are interfaced together to give the improved **SOLID STATE** motor control performance to the **Classic** AEC 200 Spool Gun design. This system can be connected to any adequately sized **CONSTANT VOLTAGE** welding power source that provides 115V or 24V AC 50/60 Hz. auxiliary power and will operate 115 volt feedback or contact closure contactor circuits. See owners and installation manual for complete details.



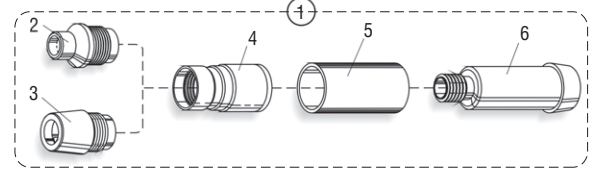
PART NO.	WIRE SIZE	I.D.
3123	.023	.031
3356	.030-.035	.044
3299	.045-3/64"	.060
3300	1/16"	.078
45-070	3/64"	.073
3136	.030	.040
3115	.035-.047	.064
3135	1/16"	.084
3067	.030-.035	.060
3068	.045-3/64"	.084
3069	1/16"	.120
3150	.030-.035 Hard	.040
3223	.045 Hard	.053
3455	3/64"	.061
3456	1/16" Alum.	.081
3793	.030-.035	.040
3839	.045	.053

NO.	PART NO.	DESCRIPTION	NO.	PART NO.	DESCRIPTION
1	4119	Bent nozzle kit	5	4139	Adapter
2	4346	Nut	6	4108	Barrel
3	4137	Nozzle	7	4138	Assembly (5 & 6)
4	4300	Slip ring			



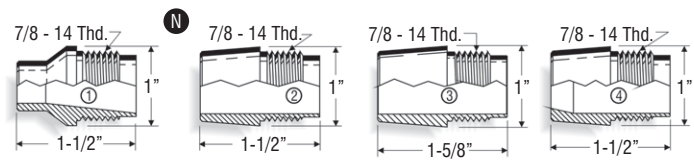
Note:
Additional 4137 nozzle included

NO.	PART NO.	DESCRIPTION	NO.	PART NO.	DESCRIPTION
1	4638	New style assembly	4	4147	Nozzle body
2	4268	Nozzle	5	4641	Spacer
3	4269	Nozzle	6	4640	Adapter sleeve



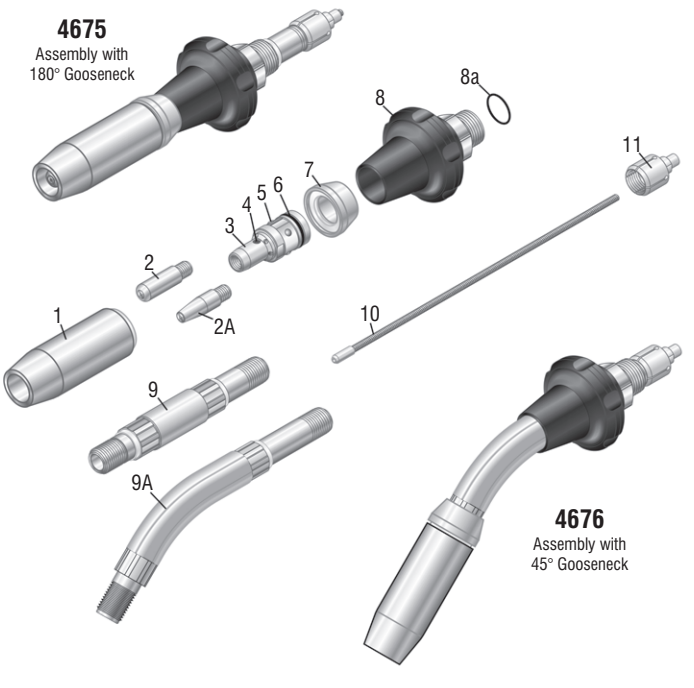
NO.	PART NO.	I.D.	MATERIAL	NO.	PART NO.	I.D.	MATERIAL
1.	4268	7/16"	Brass	3.	4270	11/16"	Brass
2.	4269	11/16"	Brass	4.	4552	9/16"	Brass
	4572	11/16"	Copper				

NO.	PART NO.	DESCRIPTION	NO.	PART NO.	DESCRIPTION
1	4124	Old style assembly	4	4117	1/2" nozzle
2	4105	Adapter		4118	3/4" nozzle
3	4108	Barrel		4110	5/8" nozzle

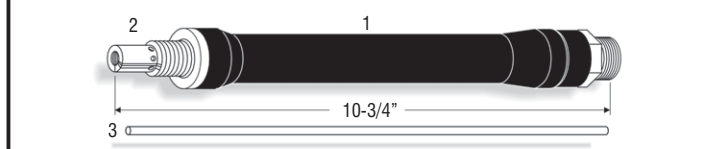


NO.	PART NO.	DESCRIPTION	NO.	PART NO.	DESCRIPTION
1	4925	Flexible barrel	3	9635-8 1/4	Liner (cut to length) Included
2	4580	Tip holder (included)			

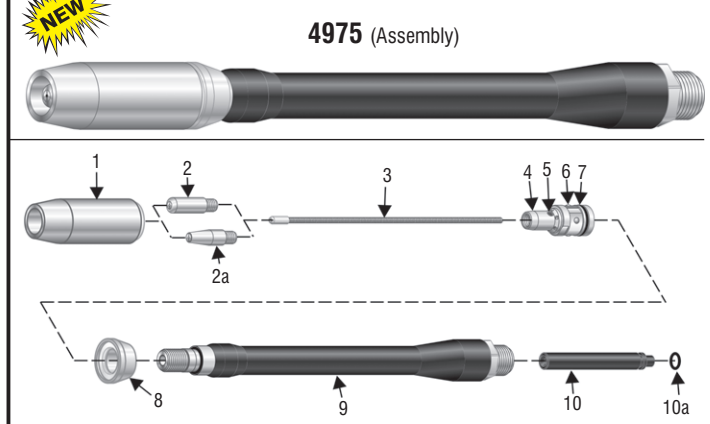
AEC 200 Heavy Duty Consumables



Nozzles 4268, 4269, and 4270 Shown above in left column **N**
Contact Tips 3150, 3223, and 3456 Shown above in left column **C**



Heavy Duty Flexible Barrel



NO.	PROFAX	DESCRIPTION	NO.	PROFAX	DESCRIPTION
1.	27 series	Nozzles (see pg. 9)	7.	17SW	Shock washer
2.	17 series	Tip (see pg. 9)	8.	4006	Barrel adapter
2a.	17ST series	Tip (see pg. 9)	8a.	4011	O-ring
3.	57HD	Gas diffuser	9.	4600	Gooseneck - straight
4.	44C	Screw	9a.	4645	Gooseneck - 45°
5.	240	Spring	10.	4010	Liner (phos-bronze)
6.	260	O-ring	11.	4009	Locking nut

NO.	PROFAX	DESCRIPTION	NO.	PROFAX	DESCRIPTION
1.	27 series	Nozzles	6.	240	Spring
2.	17 series	Tip	7.	260	O-ring
2a.	17ST series	Tip	8.	17SW	Shock washer
3.	4010HDF	Liner (phos-bronze)	9.	4925HD	HD Flexible Barrel
4.	57HD	Gas diffuser	10.	1103HD	HD Guide Tube
5.	44C	Screw	10a.	1111	O-ring



STANDARD SPOOL GUNS

PART NO.	WIRE SIZE	CONNECTION TYPE
AEC 200-36 AEC 200-64 AEC 200-81	.030-3/64" ALUMINUM .035-3/64" ALUMINUM .023-.045 HARD WIRE 3/64" & 1/16" ALUMINUM	FOR USE WITH THE AEC 200-1 ON CONSTANT VOLTAGE POWER SOURCES OR WITH THE AEC 200-2 AND AEC 200-3A ON CONSTANT CURRENT POWER SOURCES.
AEC 200-36P AEC 200-64P AEC 200-81P	.030-3/64" ALUMINUM .035-3/64" ALUMINUM .030-.045" HARD WIRE 3/64" & 1/16" ALUMINUM	FOR USE WITH THE AEC 200-1P CONTROL BOX ON CONSTANT VOLTAGE POWER SOURCES. DIRECT CONNECTS TO THE PROFAX P250SG OR P300SG POWER SOURCES.

SOLID STATE SPOOL GUNS

AEC 200-36L	.030-3/64" ALUMINUM .030-.035 HARD WIRE	DIRECT CONNECTS TO AN ESAB® MIGMASTER 250 AND TO THE ST-28A CONTROL BOX.
AEC 200-4	.030-1/16" ALUMINUM .023-.045" HARD WIRE	MUST BE USED IN CONJUNCTION WITH THE AEC 200-4C CONTROL BOX. FOR USE ON CONSTANT VOLTAGE POWER SOURCES ONLY.
AEC 200-4DM	.030-1/16" ALUMINUM .023-.045 HARD WIRE	DIRECT CONNECTS TO MILLER® OR COMPARC® CONSTANT VOLTAGE POWER SOURCE WITH THE 14 PIN RECEPTACLE. CAN ALSO BE USED WITH THE AEC-LVC CONTACTOR BOX ON CV MACHINES WITHOUT A CONTACTOR.
AEC 200-4DMX	.030-1/16" ALUMINUM .023-.045 HARD WIRE	DIRECT CONNECTS TO A MILLERMATIC® 250X, TO THE MILLERMATIC® 300 (BEGINNING WITH SERIAL # LA000202) AND THE HOBART® IRONMAN 275.
AEC 200-4DP	.030-1/16" ALUMINUM .023-.045 HARD WIRE	DIRECT CONNECTS TO A PROFAX P250SG OR P300SG POWER SOURCE.

STANDARD CONTROL BOXES

AEC 200-1	FOR USE WITH ANY STANDARD PROFAX SPOOL GUN BEING USED ON A CONSTANT VOLTAGE POWER SOURCE. (SEE CONTACTOR BOX).
AEC 200-1P	FOR USE WITH ANY STANDARD PROFAX (P) SPOOL GUN BEING USED ON A CONSTANT VOLTAGE POWER SOURCE. (SEE CONTACTOR BOX).
AEC MD1	DROP IN MODULE FOR A MILLERMATIC® 250 OR VINTAGE, ALLOWING ANY STANDARD PROFAX (P) SPOOL GUN TO BE DIRECT CONNECTED.
AEC 200-2	FOR USE WITH ANY STANDARD PROFAX SPOOL GUN BEING USED ON A CONSTANT CURRENT POWER SOURCE. (SEE CONTACTOR BOX).
AEC 200-3A	FOR USE WITH A STANDARD PROFAX SPOOL GUN ON A CONSTANT CURRENT DC POWER SOURCE. RECOMMENDED FOR INDUSTRIAL SIZED ELECTRIC MACHINES AND ENGINE DRIVES OF 3 CYLINDERS OR MORE. OPERATES ON 115V AC OR DC.

SOLID STATE CONTROL BOXES

AEC 200-4C	FOR USE WITH AN AEC 200-4 BEING USED ON A CONSTANT VOLTAGE WELDING POWER SOURCE. (SEE CONTACTOR BOX).
AEC MD2	DROP IN MODULE FOR A MILLERMATIC® 250 AND VINTAGE SO THAT AN AEC 200-4DM CAN BE DIRECT CONNECTED.

CONTACTOR BOX

AEC 200-C	FOR USE ON POWER SOURCES WITHOUT A CONTACTOR. USED IN CONJUNCTION WITH AN AEC 200-1, AEC 200-1P OR AEC 200-4C ON CONSTANT VOLTAGE POWER SOURCES AND WITH THE AEC 200-2 ON CONSTANT CURRENT POWER SOURCES.
AEC 200-LVC	FOR USE WITH THE AEC 200-4DM WHERE AN EXTERNAL CONTACTOR IS REQUIRED.

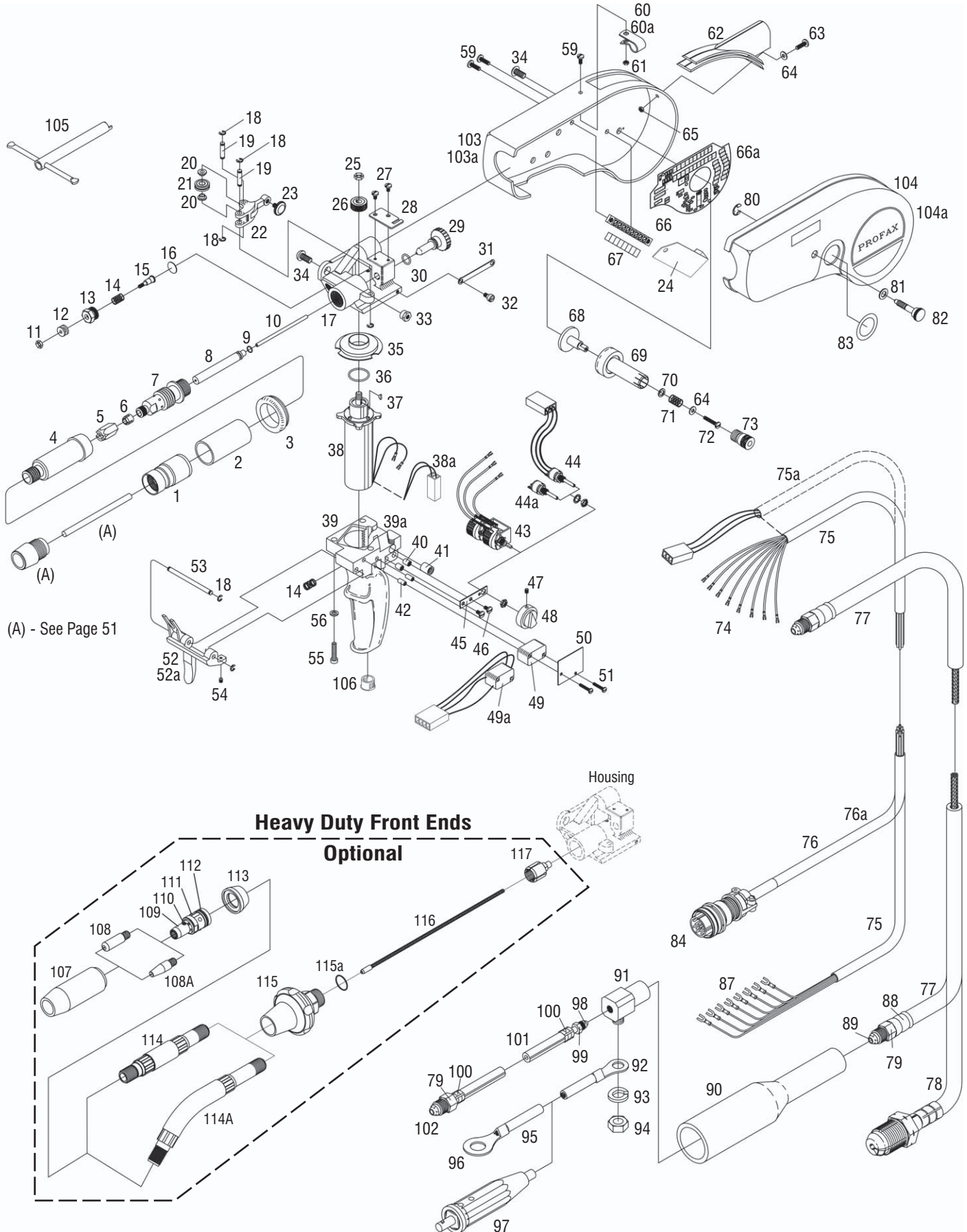
Regulator/Flowmeter

SPECIFICATIONS:

- Brass body
- Preset @ 30 psi
- Flow meter range - 10-60 scfh
- Economical design

PROFAX	GAS SERVICE	CGA INLET
PXRF1430-580	Argon & Argon/CO ₂ Mixes	580
PXRF1430-320	CO ₂	320







Replacement Parts for the AEC 200 1# Spool Gun

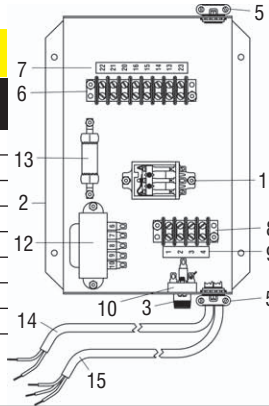
NO.	PROFAX PART NO.	OLD PART NO.	DESCRIPTION	NO.	PROFAX PART NO.	OLD PART NO.	DESCRIPTION
1	4147	2360-7147	Nozzle body	60a	1579D		Cable clamp (200-4D)
2	4641	2360-7641	Spacer	61	1715	9201-6715	Nut
3	1102	2360-2102	Grommet	62	1059	2360-2059	Sleeve
4	4640	2360-7640	Adapter sleeve	63	1215	9204-2715	Round head screw
5	1614	2360-0614	Nut	64	1027	9205-6027	Washer
6	1613	2360-0613	Fitting	65	1012	9201-8012	Speed nut
7	1058	2360-2058	Inner barrel	66	1121	2360-2121	Terminal strip
8	1103	2360-2103	Guide tube	66a	9252		PC board (200-4D)
9	1111	2360-2111	O-ring	67	1114	2360-2114	Marker strip
10	5133	2360-2133	Green liner .030-.035	68	1091	2360-2091	Post
	5109	2360-2109	Red liner .045-3/64"	69	1090	2360-2090	Spindle
	5134	2360-2134	White liner 1/16"	70	1089	2360-2089	Washer
11	1743	9201-6743	Pal nut	71	1118	2360-2118	Spindle spring
12	1100	2360-2100	Guide	72	1624	9204-2624	Screw
13	1754	831-1754	Retainer	73	1092	2360-2092	Spindle screw
14	1117	2360-2117	Spring	74	1969	2360-2069	Spade terminal
15	1107	2360-2107	Valve pin	75	1060	2360-2060	Control cable assembly
16	1953	831-1953	Diaphragm	75a	1060DM		Cable w/Miller® 14 Pin (200-4D)
17	1098	2360-2098	Housing	75a	1060DMX		Cable w/Miller® 10 Pin (200-4D)
	1078	2360-2078	Arm assembly (w/#'S 18-22)	75a	1060DP		Cable w/PROFAX 10 Pin (200-4D)
18	1388	2360-3388	Retaining ring	76	1060L	L Gun	Control cable assembly 30'
19	1077	2360-2077	Pin	76a	1060-4	4 Gun	Control cable assembly 50'
20	1076	2360-2076	Spacer		1060P	P Gun	Control cable assembly
21	1072	2360-2072	Driven roll	77	1057	2360-2057	Hose cable assembly
	1072-.023		Driven roll for .023 wire only	78	1057L	L Gun	Hose cable assembly 30'
22	1171	2360-6171	Pressure Arm	79	1255	803-0255	Connection nut
23	1122	2360-2122	Adjusting screw	80	1052	9226-0052	Retaining ring
24	9260	4 Gun	Terminal Cover	81	1116	2360-2116	Thrust washer
25	1741	9201-6741	Pal nut	82	1083	2360-2083	Lock screw
26	1080	2360-2080	Drive roll	83	1104	2360-2104	Dial plate
27	1130	9204-4130	Screw	84	136961		14 pin plug for DM gun
28	1082	2360-2082	Spring catch		6459		10 pin male plug for P gun
29	1094	2360-2094	Inlet bushing		1607L	647257	8 pin male plug for L & #4 gun
30	1709	2389-3709	O-ring	87	1963	9228-0063	Spade terminal
31	1079	2360-2079	Drive roll spring	88	1433	2360-3433	Ferrule
32	1987	2360-6987	Pivot screw	89	1832	2360-0832	Fitting
33	1930	2360-2130	Insulating insert	90	1074	2360-2074	Cable boot
34	1127	9204-4127	Screw	91	1087	2360-2087	Block
35	1081	2360-2081	Motor insulator	92	1972	9228-0072	Terminal
36	1071	831-2071	O-ring	93	1009	9205-6009	Washer
37	1004	9220-0004	Key	94	1742	9201-6742	Nut
38	1061	2360-2061	Motor (36:1 ratio)	95	1086	2360-2086	Cable assembly
	1063	2360-2063	Motor (81:1 ratio)	96	1923	2360-2123	Cable lug
	1886	2360-6886	Motor (64:1 ratio)	97	LDP-50M		Dinse connector
38a	1886D		Motor (200-4D)	98	1273	803-0273	Gland
39	1066	2360-2066	Handle	99	1277	803-0277	Nut
39a	1066D		Handle (200-4D)	100	1206	803-9206	Ferrule
40	1014	9218-0014	Insert 6-32	101	1085	2360-2085	Hose assembly
41	1037	9218-0037	Insert 1/4"-20	102	1245	803-0245	Gland
42	1036	9218-0036	Insert 4-40	103	1065	2360-2065	Rear cover (Orange)
43	1106	2360-2106	Rheostat assembly	103a	1065RD		Rear cover (200-4D) (Red)
44	1606D		Potentiometer (200-4D)	104	1064	2360-2064	Front cover (Orange)
44a	1606L	636202	Potentiometer for L & #4 gun	104a	1064RD		Front cover (200-4D) (Red)
45	1095	2360-2095	Bracket	105	1264	832-9264	Wrench
46	1993	9204-3093	Screw			Not Shown	Terminal strip insulator for solid state
47	1131	9204-4131	Set screw	106	9338		Hole plug
48	1096	2360-2096	Knob	107	27 Series		Nozzles (see pg. 9)
49	1280	2310-0280	Micro switch	108	17 Series		Tip (see pg. 9)
49a	1280D		Micro switch (200-4D)	108a	17ST Series		Tip (see pg. 9)
50	1113	2360-2113	Insulator	109	57HD		Gas diffuser
50a	1113D		Insulator (200-4D)	110	44C		Screw
51	1018	9205-6018	Screw	111	240		Spring
52	1097	2360-2097	Trigger	112	260		O-ring
52a	1097D		Trigger (200-4D)	113	17SW		Shock washer
53	1093	2360-2093	Trigger pin	114	4600		Gooseneck - straight
54	1682	9204-9682	Set screw	114a	4645		Gooseneck - 45°
55	1134	9204-4134	Screw	115	4006		Barrel adapter
56	1126	9205-6126	Lock washer	115a	4011		O-ring
59	1167	9204-4167	Screw	116	4010		Liner (phos-bronze)
60	1579	834-0098	Cable clamp	117	4009		Locking nut



AEC 200-1

NO.	PART NO.	DESCRIPTION	NO.	PART NO.	DESCRIPTION
1	8328A	Cover, top N/S*	9	8004	Decal, 4 pole terminal strip
2	8329A	Base	10	6314	Bridge rectifier
3	6100	Fuse holder	11	6271	Relay, 3 PDT-24VAC
4	6101	Fuse 1¼ amp slo blo N/S*	12	6416	Transformer, step down
5	7026	Strain relief (2)	13	6010	Resistor, 10 ohm 25 watt
6	7008	Terminal strip 8 pole	14	6182	Cable, 5' 18/2
7	8008	Decal, 8 pole terminal strip	15	6183	Cable, 5' 18/3
8	7004	Terminal strip 4 pole			

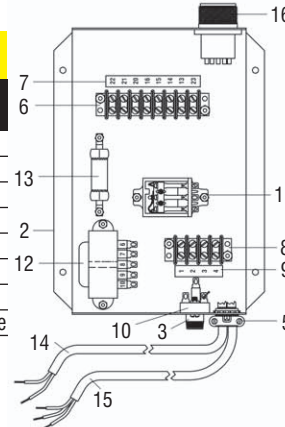
For use in connecting the AEC 200 welding gun to a constant voltage welding power source.



AEC 200-1P

NO.	PART NO.	DESCRIPTION	NO.	PART NO.	DESCRIPTION
1	8328A	Cover, top N/S*	9	8004	Decal, 4 pole terminal strip
2	8329A	Base	10	6314	Bridge rectifier
3	6100	Fuse holder	11	6271	Relay, 3 PDT-24VAC
4	6101	Fuse 1¼ amp slo blo N/S*	12	6416	Transformer, step down
5	7026	Strain relief (2)	13	6010	Resistor, 10 ohm 25 watt
6	7008	Terminal strip 8 pole	14	6182	Cable, 5' 18/2
7	8008	Decal, 8 pole terminal strip	15	6183	Cable, 5' 18/3
8	7004	Terminal strip 4 pole	16	6458	10 pin amphenol receptacle

For use in connecting the AEC 200P welding gun to a constant voltage welding power source.

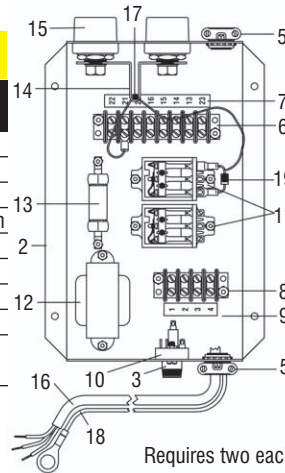


AEC 200-2

NO.	PART NO.	DESCRIPTION	NO.	PART NO.	DESCRIPTION
1	8328A	Cover, top N/S*	11	6271	Relay, 3 PDT-24VAC (2)
2	8330A	Base	12	6416	Transformer, step down
3	6100	Fuse holder	13	6010	Resistor, 10 ohm 25 watt
4	6101	Fuse 1¼ amp slo blo N/S*	14	6022	Current relay w/reed switch
5	7026	Strain relief (2)	15	08106	Dinse panel mount (2)
6	7008	Terminal strip 8 pole	16	6183	Cable, 5' 18/3
7	8008	Decal, 8 pole terminal strip	17	6023	Reed switch only
8	7004	Terminal strip 4 pole	18	6255	Sensor lead
9	8004	Decal, 4 pole terminal strip	19	6272	Relay diode assembly (8 amp 600 volt)
10	6314	Bridge rectifier			

*N/S - Not Shown

For use in connecting the AEC 200 welding gun to a constant current welding power source.

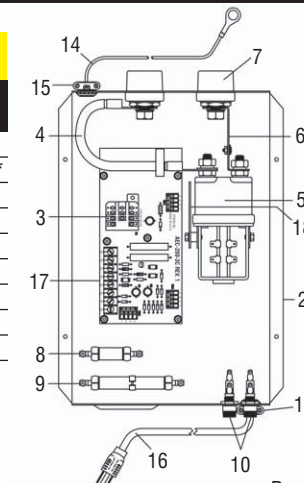


Requires two each Lenco LDP-50 Dinse type cable connectors.

AEC 200-3A

NO.	PART NO.	DESCRIPTION	NO.	PART NO.	DESCRIPTION
1	8333A	Cover, top N/S*	10	6100	Fuse holder
2	8334A	Base	11	6101	Fuse, 1¼ amp slo blo N/S*
3	6275	Relay 110V DC	12	6102	Fuse, 2 amp slo blo N/S*
4	7014B	Buss cable	14	6104	Sensor lead
5	6428	Contactor	15	7026	Strain relief (2)
6	7014A	Bus bar	16	6185	Line cord
7	08106	Dinse panel mount (2)	17	6000B	Printed circuit board assy
8	6010	Resistor 10 ohm 25 watt	18	6428FS	Flash suppressor
9	6013	Resistor 100 ohm 50 watt			

For use in connecting the AEC 200 welding gun to a constant current stationary or engine driven welding power source not having a contactor. **Recommended for aluminum welding only.**



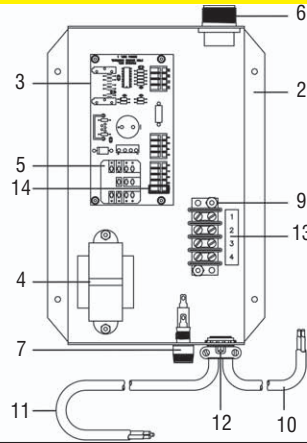
Requires two each Lenco LDP-50 Dinse type cable connectors.



AEC 200-4C

NO.	PART NO.	DESCRIPTION	NO.	PART NO.	DESCRIPTION
1	8328A	Top cover N/S*	8	6101	Fuse, 1.25 amp 250V*
2	8336A	Base	9	7004	Terminal strip
3	9250	PC board	10	6182	Contactord cord, 5 ft. 18/2
4	6416	Transformer 115/24 50VA	11	6183	Primary cord, 5 ft. 18/3
5	9044	Relay, 3PDT - 24VAC	12	7026	Strain relief
6	6461	8 pin receptacle	13	8004	Decal, 4 pole terminal strip
7	6100	Fuse holder	14	8999	Terminal tool

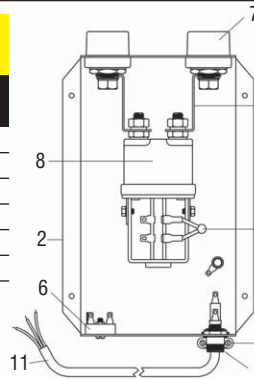
For use in connecting the AEC 200-4 spoolgun to constant voltage power sources.



AEC 200-C

NO.	PART NO.	DESCRIPTION	NO.	PART NO.	DESCRIPTION
1	8327A	Cover, top N/S*	7	08106	Dinse panel mount (2)
2	8331A	Base	8	6428	Contactord
3	6100	Fuse holder	9	6011	Varistor assembly
4	6101	Fuse 1 1/4 amp slo blo N/S*	10	7014	Bus bar (2)
5	7026	Strain relief	11	6183	Cable, 5' 18/3
6	6314	Bridge rectifier			

For use with the AEC 200 welding gun and related controls, however, it may also be used in any application requiring a welding contactor, as long as operating parameters are observed.



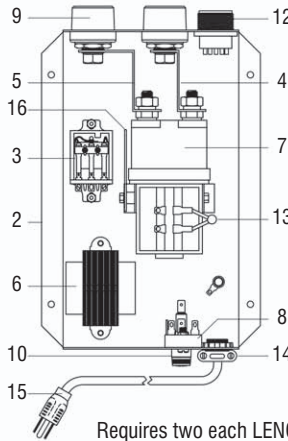
Requires two each Lenco LDP-50 Dinse type cable connectors.



AEC 200-LVC

NO.	PART NO.	DESCRIPTION	NO.	PART NO.	DESCRIPTION
1	8327A	Cover, top N/S*	10	6100	Fuse holder
2	8325A	Base	11	6101	Fuse, 1 1/4 amp slo blo N/S*
3	6271	Relay 24VAC	12	086022	14 socket panel receptacle
4	7014	Bus bar	13	6011	Varistor assembly
5	7014C	Bus bar	14	7026	Strain relief
6	6416	Transformer	15	6185	Line cord
7	6428	Contactord	16	6428FS	Flash suppressor assembly
8	6314	Bridge rectifier			
9	08106	Dinse panel mount (2)			

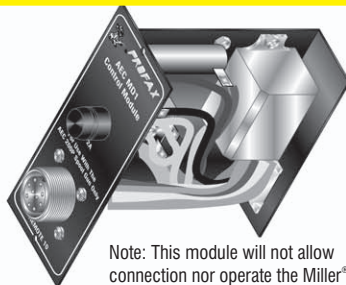
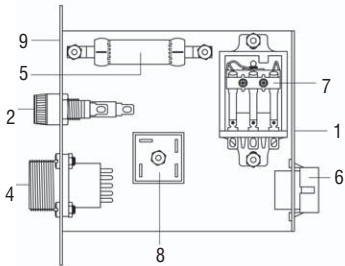
For use with the AEC 200-4DM spoolgun on constant voltage power sources without an internal contactor.



Requires two each Lenco LDP-50 Dinse type cable connectors.



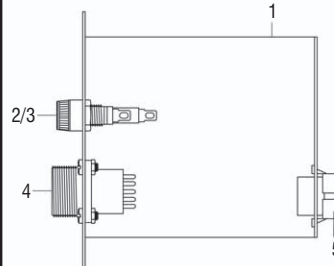
AEC MD1



A drop-in module for the Millermatic® 250, that will allow you to direct connect the PROFAX AEC 200P Spoolgun without an external control box.

NO.	PART NO.	DESCRIPTION	NO.	PART NO.	DESCRIPTION
1	8335	Component mounting plate	6	6460	12 pin square plug
2	6100	Fuse holder	7	6271	Relay, 3PDT - 24VAC
3	6102	Fuse, 2 amp (Not Shown)	8	6314	Bridge rectifier
4	6458	10 pin panel mount receptacle	9	8009	Face plate decal
5	6010	Resistor - 10 ohm 25 watt			

AEC MD2



For direct connection of the PROFAX AEC 200-4DM Solid State Spoolgun to the Millermatic® 250 and Vintage.

NO.	PART NO.	DESCRIPTION	NO.	PART NO.	DESCRIPTION
1	8337	Component mounting plate	4	9213	14 pin panel mount receptacle
2	6100	Fuse holder	5	6460	12 pin square plug w/pins
3	6102	Fuse, 2 amp (Not Shown)			

*N/S - Not Shown