



# THE SSC CONTROLS COMPANY

THE FOOT SWITCH EXPERTS®

## Product Information Sheet

### S-Series Foot Switches with Guards

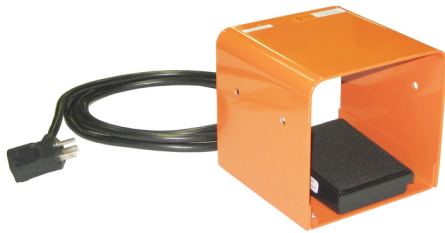
The S-Series with Guards provide an exceptional value for a light-duty guarded foot switch. The package includes the reliable S-Series foot switch enclosed in a durable 12-gauge steel guard and various cable or foot switch action configurations. The guard provides a comfortable housing in which to locate the foot, as well as protect the switch from debris.

#### Design features:

- Tough, durable 12-gauge steel housing.
- Available in any combination of S-series foot switches (standard models listed below).
- Includes rubber bumper feet or bolt-down holes for mounting to equipment or the floor.

#### Quality features:

- Designed and manufactured under a quality system certified to ISO 9001 requirements.
- Includes 1-year warranty.
- Made in USA of imported and domestic components.



#### Single-Unit Guard (S100-1501G shown)

Dimensions, L x W x H: 6.0" x 6.0" x 5.8"

Weight: 5.4 pounds

Finish: powder paint, safety orange



#### Dual-Unit Guard (S100-1502DG shown)

Dimensions, L x W x H: 10.2" x 6.0" x 6.2"

Weight: 8.4 pounds

Finish: powder paint, safety orange

Model	# of Switches	Rating	Cord	Certification
S100-1501G	1	15 A, 125 VAC	8-foot cable with piggyback plug	
S100-1502G	1	15 A, 125/250 VAC	8-foot cable with leads	
S100-1501DG	2	15 A, 125 VAC	8-foot cable with piggyback plug	
S100-1502DG	2	15 A, 125/250 VAC	8-foot cables with leads	
DS100-DG	2	13 A, 125/250 VAC	single 8-foot cable with leads	

Notes: All models listed above have momentary action – press and hold to turn on, release your foot to turn off. Other models are available; any S-Series foot switch can be purchased with a guard.



**Warning:** To avoid personal injury, do not use foot switches on machinery lacking effective point-of-operation safeguards. Disconnect input power before installation or maintenance.

The SSC Controls Company  
 8909 East Avenue Mentor, Ohio 44060  
 Phone: 440 205-1600 Fax: 440 205-1700