

PRO² Mini Purge Monitor

Operating Instructions



1000 ppm – 5 ppm

Designed for Argon & Nitrogen Purge Monitoring

Index

Index.....	2
1. General Instructions.....	3
2. Safety Note.....	4
3. Scope of delivery.....	5
4. Device set-up.....	6
5. Operating mode.....	7 - 10
6. Technical data.....	11#

1. General instructions

This operating manual describes the components, functionality, operations and safety precautions when using the PRO² Mini Purge Monitor.

Contact:

Intercon Enterprises Inc
1125 Fir Avenue
Blaine WA 98230
USA

Tel.: +1-800-665-6655
E-Mail: sales@intercon1978.com
Web Site: www.Intercon1978.com

Intercon Enterprises Inc
6901 - 72 Street
Unit 216
Delta BC V4G 0A2
Canada

Tel.: +1-604-946-6066
Fax: +1-604-946-5340
E-Mail: sales@intercon1978.com
Web Site: www.Intercon1978.com

2. Safety Note

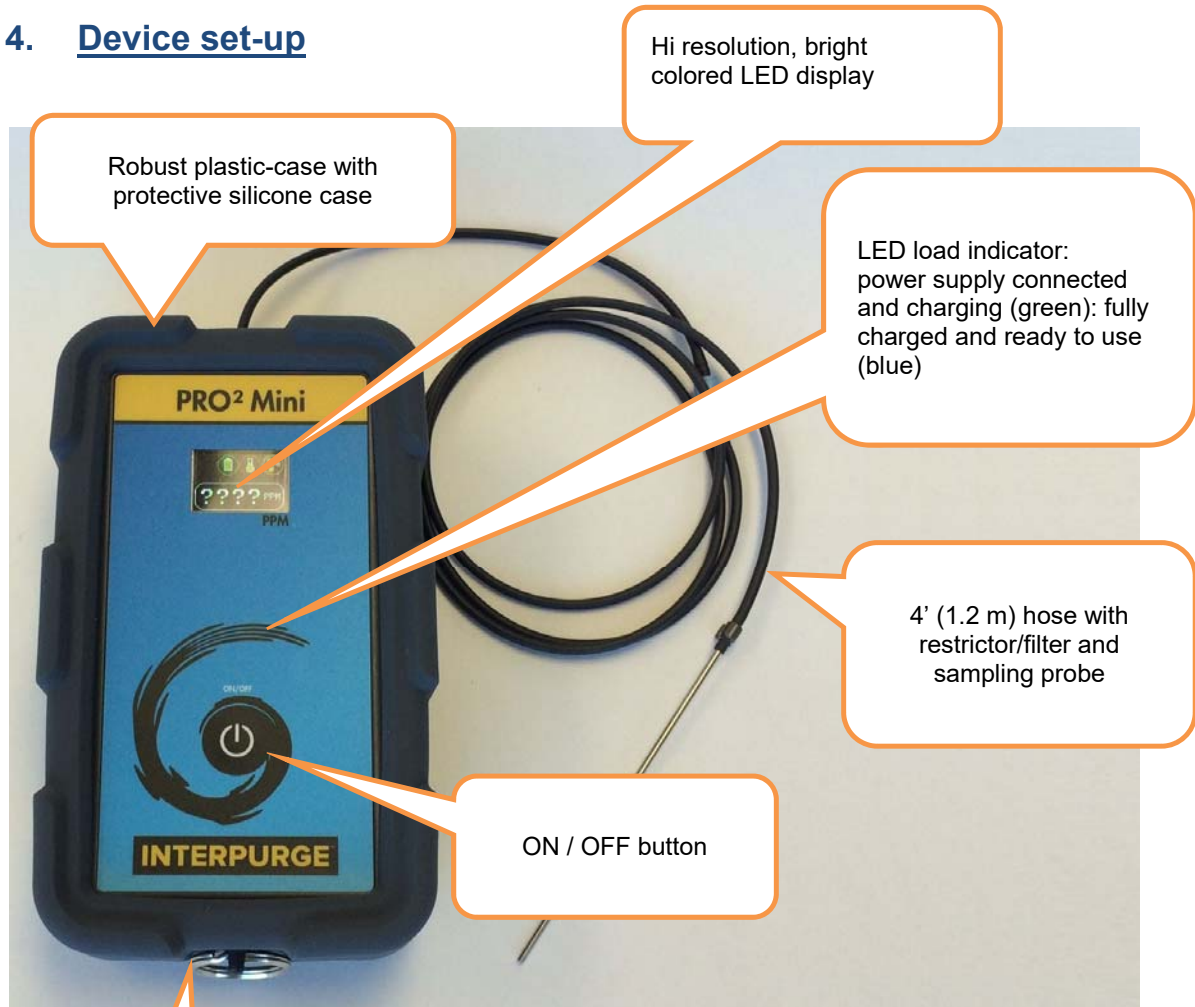
The PRO² Mini Purge Monitor is powered by a rechargeable lithium ion cell battery pack (3.7 VDC, 3000 mAh), which is soldered in place on the internal circuit board.

We recommend you follow the general terms of safety for the use and transport of these power cells.

Please do not dispose of the used cells with general waste or put in a landfill - please recycle.

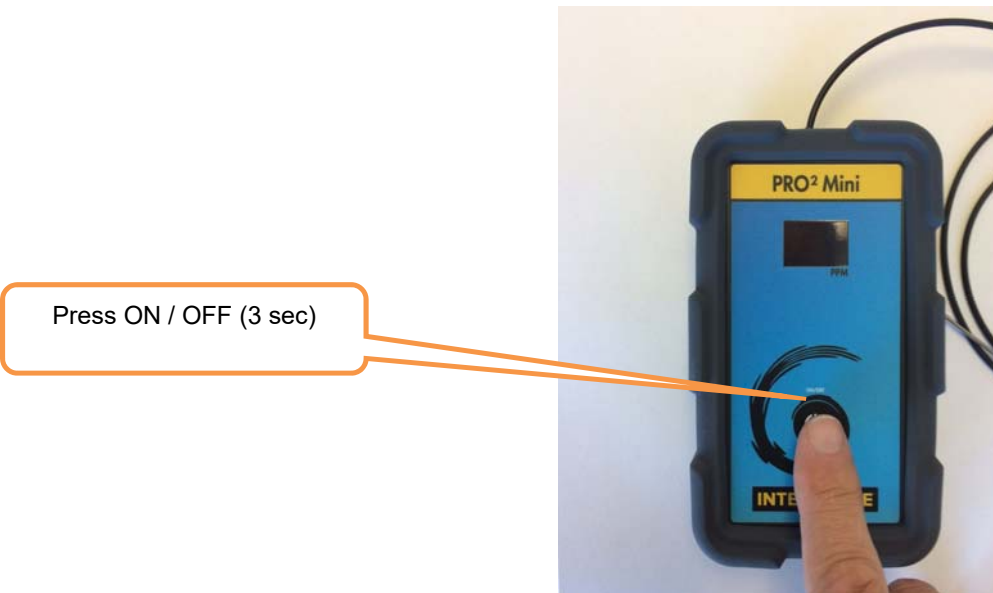


4. Device set-up

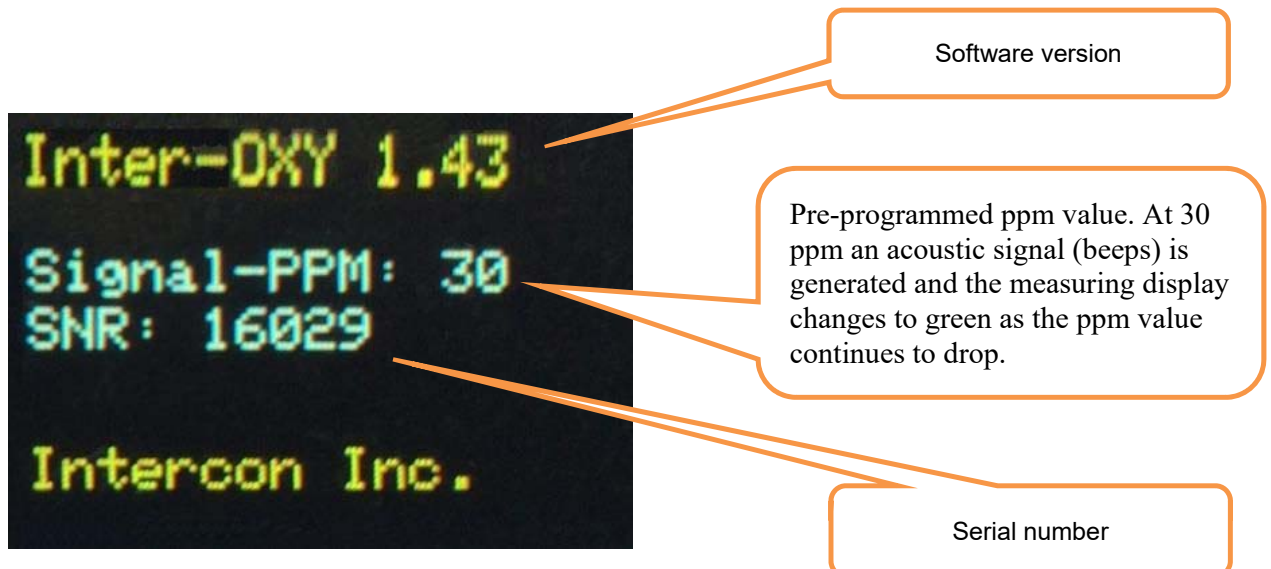


5. Operating mode

Switch ON: Press and hold the ON/OFF button for 3 seconds. Monitor starts.



A home screen appears for approx. 3 seconds and an acoustic signal sounds when starting the monitor. This screen contains manufacturer settings/data, software version, preprogrammed ppm (parts per million) value and serial number.



Once the monitor is powered up, the screen will display battery status, heating indicator and a fan, which represents the built in pump. Below are 4 question marks in different colours (white/red). This means the pump is not engaged as the fan blades are not turning and no measuring is taking place.



When the monitor is shaken sideways (internal motion sensor) both the pump is switched on and the sensor begins to heat up. If you do not want to lightly shake the monitor, you can press the ON/OFF button for approx. 1 second and both the pump and heating process for the sensor starts.



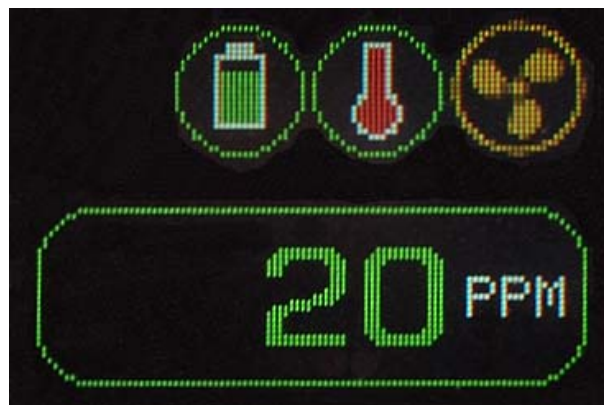
When a value of 1000 ppm is displayed on the monitor, the sensor is heated and the sampling probe can be positioned through the root gap of the pipe or into the desired measuring area.

Maximum reading value
1000 ppm

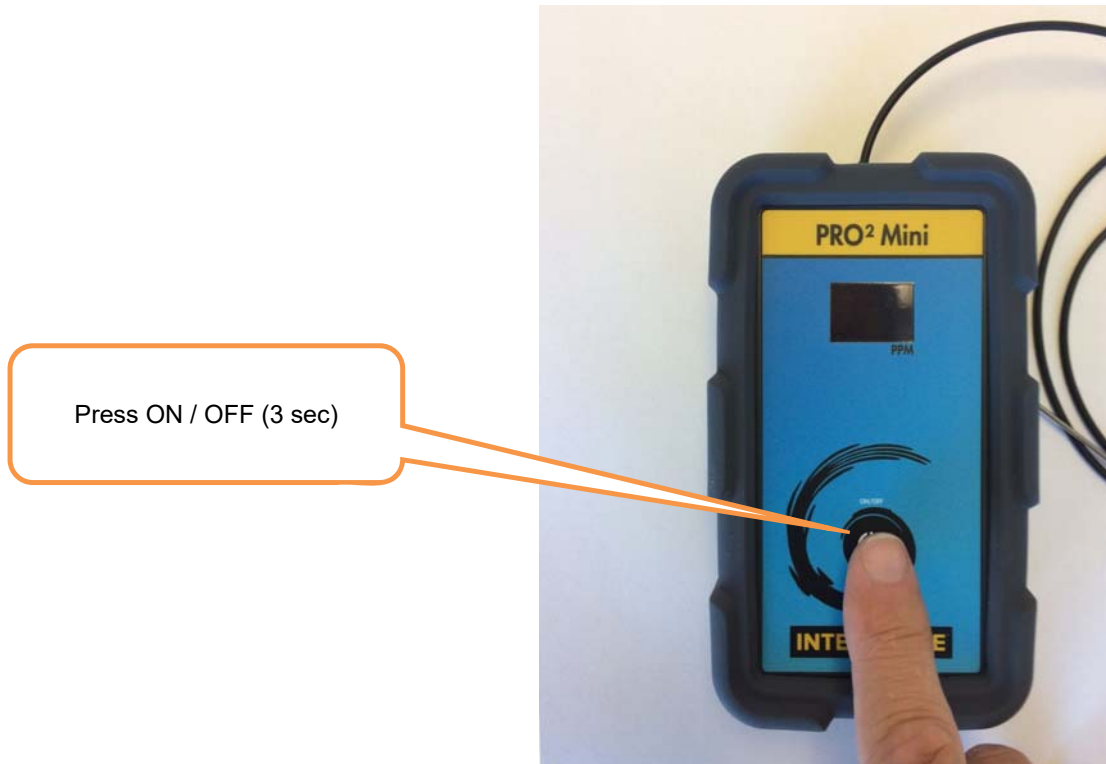
1000 ppm = 0.1% oxygen

Minimum value is 5 ppm

5 ppm = 0.0005% oxygen



When a ppm value below the pre-programmed value of 30 ppm is measured, an acoustic signal (beeps) which changes the display from white to green. This value can be reprogrammed with an android mobile phone or by connecting to a PC.

Switching OFF the Pro² Mini

By pressing the ON/OFF switch for 3 seconds the monitor will be switched off.

Caution!

When the purge monitor does not receive a measuring value for more than 15 minutes in the working mode while pumping or in the standby mode without pump activity and measuring, it will switch off automatically.

This built in feature conserves energy use and battery life, while reducing unnecessary strain on the pump and sensor.

Once you restart the monitor, it will be ready to use in less than 60 seconds.

6. Technical data

Dimension without case	5-1/2" x 3-5/16" x 3-1/2" (140 mm x 85 mm x 90 mm)
Dimension with case	12" x 14" x 3-1/2" (305 mm x 355 mm x 90 mm)
Weight without case	0.66 lbs (0.3 kg)
Weight with case	3.0 lbs (1.4 kg)
Power supply	Input: 100 VAC-240 VAC, 50-60 Hz, 0.25 A Output: 12 VDC, 1000 mAh, 12 VA Internal Lithium Ion Cell 3.7 VDC, 4,300 mAh
Measuring performance	4' (1.2 m) hose with restrictor/filter and stainless sampling probe
Battery life between charges	Max. measuring time with 100% continuous non-stop use – approx. 4.5 hours
Battery charging time	Approx. 5 hours

The Pro² MINI should be calibrated once a year. Please contact Intercon for calibration services at sales@intercon1978.com or call **1-800-665-6655**.