

# SAVAGE A40 PAPR

Professional automatic welding helmet with NIOSH-approved PAPR



The Savage A40 PAPR pairs the advanced features of the Savage A40 welding helmet with a powerful PAPR system designed to filter 99.9% of fine particles from the air during routine procedures. As a fully featured system, welders can now experience optimal True Color with 1/1/1/2 class optical view of the weld pool through a large 100 x 50 mm (3.93 x 1.96 in.) ADF. The external grind button and knob make it simple to adjust the shade control from 9-13, allowing an easy switch for different welding processes. The Savage A40 PAPR NIOSH-approved welding system represents the features welders need to get the job done quickly, accurately and safely.

## Welding Process

- Oxy-Fuel Cutting
- Plasma Cutting
- Grinding
- Welding, GMAW (MIG/MAG)
- Welding, GTAW (TIG)
- Welding, PAW -Plasma Arc Welding
- Welding, SMAW/MMA (Stick)

- NIOSH-approved PAPR filtration system delivers three-setting adjustable flow from 170 to 230 liters per minute
- Convenient push-button interface with easy to read LCD display for PAPR adjustment
- High efficiency 2 stage filtration system with spark arrestor for added safety
- LCD display indicating fan speed, flow rate and battery charge level with additional audible alert for low battery
- High quality shielded air tube with simple connections
- Fully adjustable PAPR harness and multi-point helmet headgear adjustment for total comfort
- Four sensor ADF with adjustable shade, sensitivity and delay controls to dial in the precise darkness and reaction speed



Visit [esab.com](http://esab.com) for more information.

# SAVAGE A40 PAPR

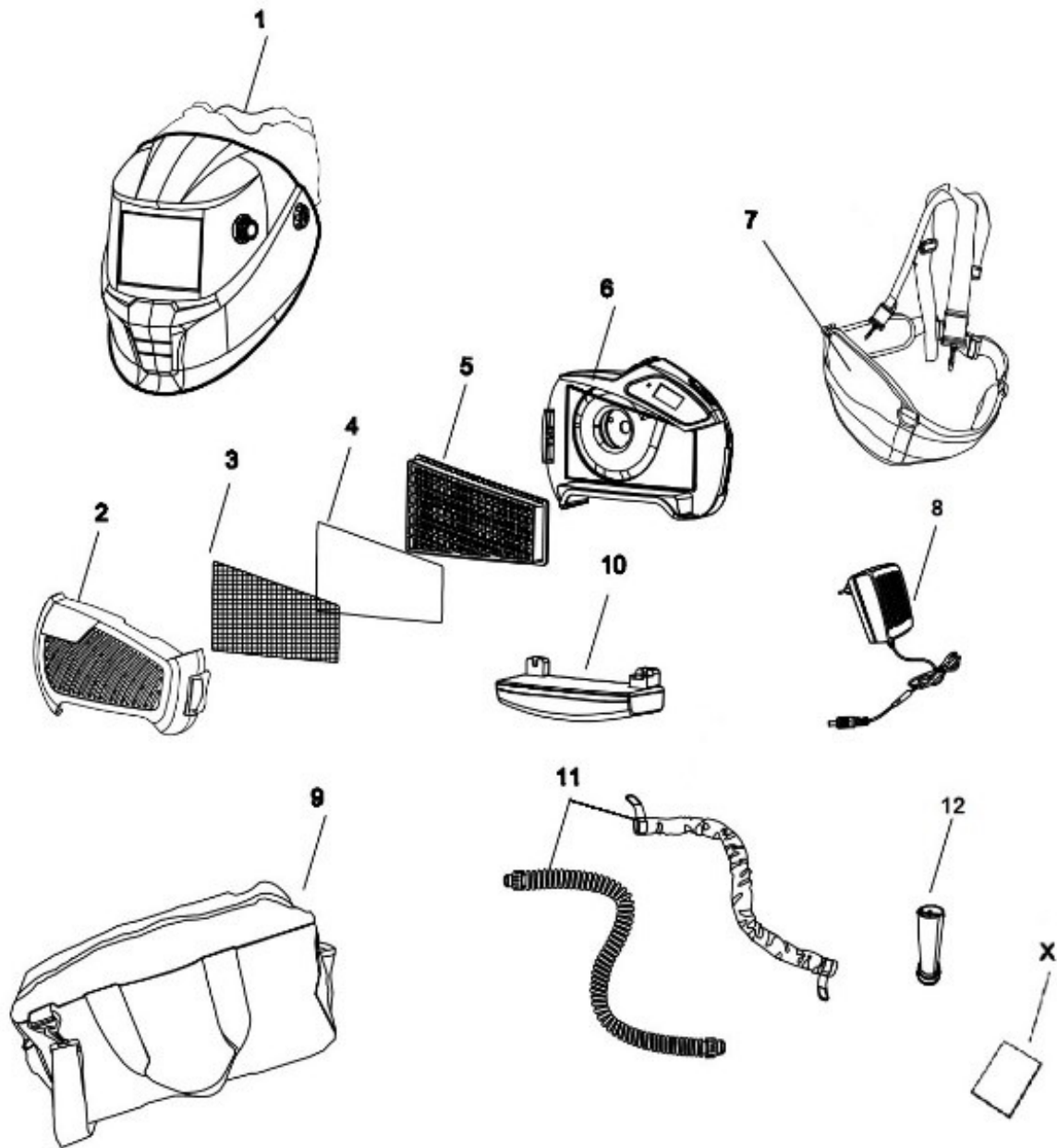
Specifications	
Cartridge Dimensions	110 x 90 x 7.8 mm (4.33 x 3.54 x 0.3 in.)
Viewing Area	100 x 50 mm (3.93 x 1.96 in.)
Lens Shade	DIN 4, 9-13 Automatic
Power Supply (helmet)	Replaceable CR2450 battery with solar cell backup. Alerts when low battery.
Power Supply (PAPR)	4400mAh Li-Ion rechargeable battery (charger included). Alerts when low battery.
Sensors	4
Switch Time, from Dark to Light	0.1-0.9 s
Switch Time, at 23°C	0.07 ms
Classification	1/1/1/2
Standards	NIOSH, ANSI Z87.1, CSA Z94.3, CE EN379, EN175, & AS/NZS 1338.1
Weight	1350 g (2.97 lbs)

Ordering Information	
Savage A40 9-13 Black, with NIOSH PAPR	0700002400

Options & Accessories	
Helmet adapter Universal Concept Hard Hat	0700001005
Breathing Tube (1M) w/ Cloth NIOSH-PAPR	0700002409
Magnifying Lens +1.0 Diopter	0700000084
Magnifying Lens +1.5 Diopter	0700000085
Magnifying Lens +2.0 Diopter	0700000086
Magnifying Lens +2.5 Diopter	0700000087
Leather Chest Protection	0700000062
Leather Head/Neck Protection	0700000063
Proban Hood	0000593269

# SAVAGE A40 PAPR

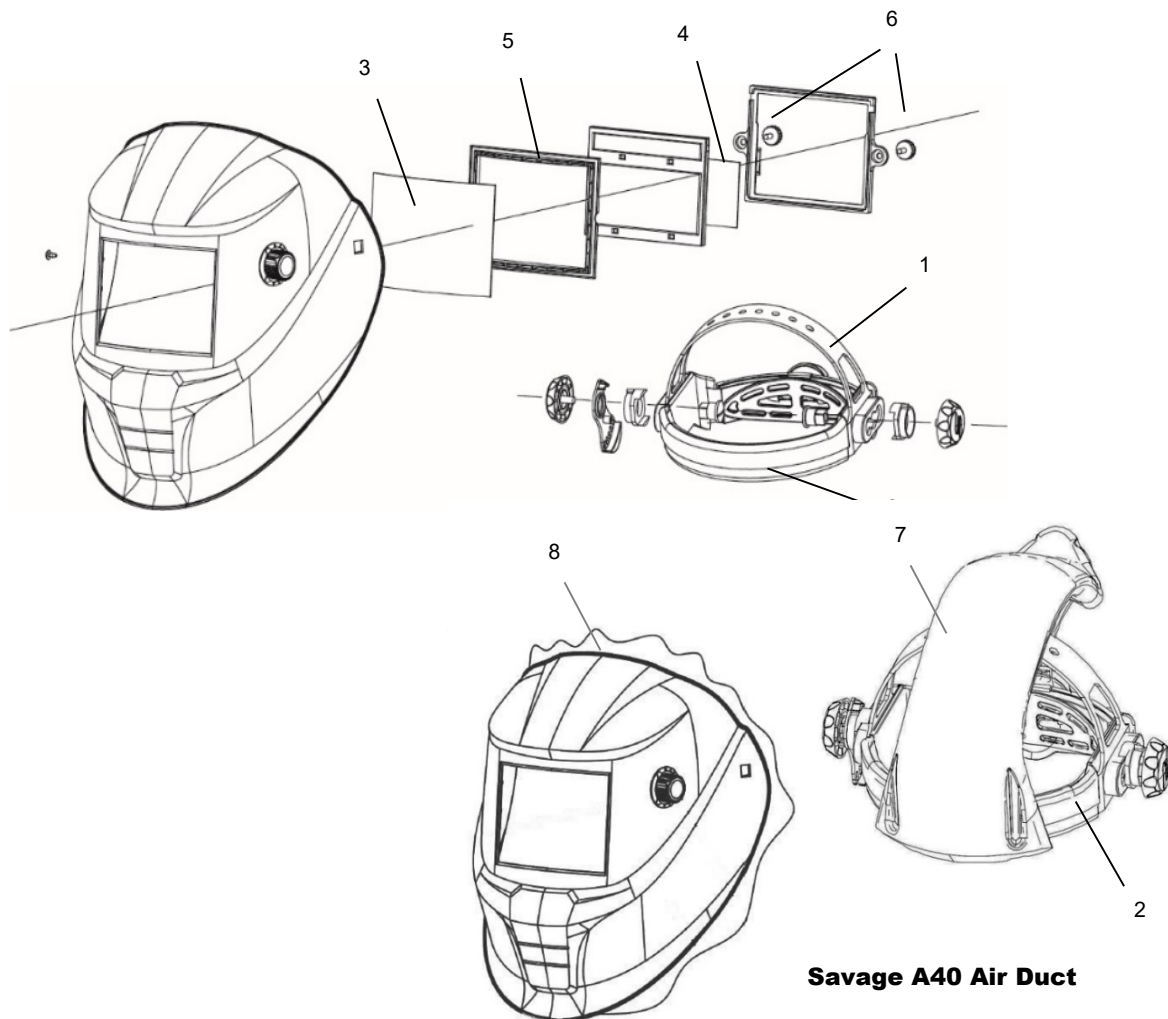
Wear and Spare Parts – PAPR System		
1	Savage A-40 9-13 Helmet Prepared for PAPR	0700500400
2	Filter Cover NIOSH-PAPR	0700002402
3	Spark Arrestor NIOSH- PAPR	0700002405
4	Pre-Filter NIOSH- PAPR (5)	0700002404
5	Main Filter NIOSH - PAPR	0700002403
6	Blower Unit NIOSH- PAPR	0700002406
7	Waist Belt w/ Shoulder Strap NIOSH-PAPR	0700002411
8	Battery Charger NIOSH- PAPR	0700002414
9	Carrier Bag NIOSH-PAPR	0700002415
10	Standard Battery NIOSH - PAPR	0700002407
11	Breathing Tube (1M) w/ Cloth NIOSH-PAPR	0700002409
12	Portable Air Flow Tester NIOSH- PAPR	0700002413



# SAVAGE A40 PAPR

## Wear and Spare Parts – Savage ADF Helmet

1	Head Gear	0700000483
2	Sweat Band	0700000414
3	Front Cover Lens	0700000010
4	Inside Cover Lens	0700000482
5	ADF Cradle	0700000418
6	Lens Retainer with Screw	0700000419
7	Head Gear with Air Duct	0700500404
8	Face Seal	0700500405



ESAB / [esab.com](http://esab.com)

