

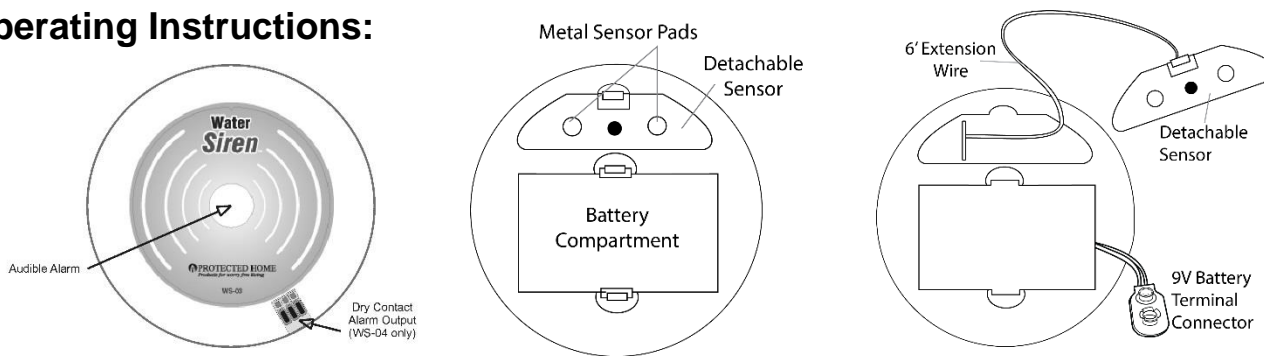
WaterSiren (WS-04) Instructions



Introduction:

The WaterSiren (model WS-04) provides easy and effective alarm notification if water is detected by the attached water sensor. Use it in a sump pit, behind appliances, on basement floors or under water heaters. The WS-04 has a 90 decibel audible alarm that will alert you when water is detected and it also will chirp every 30 seconds if the battery requires replacing. The alarm will sound for up to 72 hours on a fully charged 9V alkaline battery (not included). The WS-04 has a dry contact alarm output that can connect to an alarm panel or telephone dialer like our Deluxe FreezeAlarm (FA-D2) or TempAlarm Dialer Pro (FA-900E). The WS-04 can either close or open an alarm contact to trigger an alarm call-out or turn on a remote light or other external siren. This is a normally open contact that closes when water is detected.

Operating Instructions:



Installing the battery:

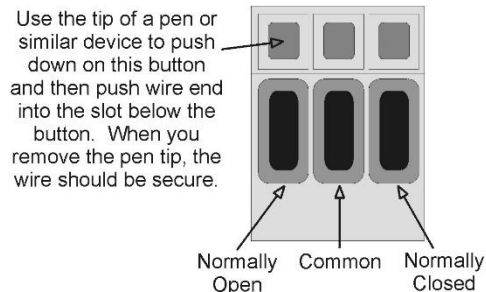
Remove the battery compartment cover on the back of the alarm and snap the battery terminal connections to 9V alkaline or lithium battery. Place the battery into the battery compartment and snap back to the back of the water alarm. Be careful to not pinch any wires when replacing the battery compartment cover and ensure the tabs snap into place. Note: Replace the battery immediately after any alarm condition or when you hear the battery chirp indicating a low battery.

Positioning the sensor:

The water sensor is located on the bottom of the WaterSiren. It has two small metal pads that must both be touching water to sound the siren. The water sensor may remain attached to the alarm device and simply set on the floor or the water sensor may also be detached using the 6' (1.8m) of wire and placed in harder to reach areas.

Connecting the Auxiliary Alarm Output

The WS-04 has an alarm output option that can be used to trigger a security system or a telephone dialer like our FA-D2 or FA-900E. This alarm output either opens or closes an alarm contact when water is detected. To connect the WS-04 to the FA-D2 or FA-900E, use any 2 conductor wire (26 to 18 AWG) and plug one wire into the left, or "Normally Open" connection. The other wire plugs into the "Common" or middle connection. If you have a device that requires a Normally Closed connection, use the "common" and "normally closed" connections. See the diagram below.



LIMITED WARRANTY:

Warrantor: Dealer, distributor, retailer, manufacturer

One year limited warranty – Control Products, Inc. warrants its products to be free from defects in material and workmanship under normal use for one year, and is not responsible for consequential damages or installation costs of any nature. In the event the product does not conform to this Warranty at any time during the period of one year from original purchase date, Warrantor will repair the defective product and return it to you at no charge. **IMPORTANT: WARRANTOR'S OBLIGATION UNDER THIS WARRANTY IS LIMITED TO REPAIR OR REPLACEMENT OF THE PRODUCT ONLY. THIS WARRANTY DOES NOT COVER PAYMENT OR PROVIDE FOR THE REIMBURSEMENT OF PAYMENT FOR INCIDENTAL OR CONSEQUENTIAL DAMAGES AND CHARGES.** It must be clear that the Warrantors are not insuring your premises or guaranteeing that there will not be damage to your person or property if you use this product. If you are not comfortable with our Limited Warranty or completely satisfied with the Product, we encourage you to return the unused Product within 30 days of original purchase date for a full refund.

Procedure for Obtaining Warranty Service:

Contact Customer Service at the number below to obtain a Returned Goods Authorization Number. Do not return the product to the place of purchase if purchased from an authorized reseller.

SPECIFICATIONS:

Battery type: 9 volt alkaline (not included)
Battery life: Up to two years, depending upon use.
Audible alarm: 90dB at 10 feet (3.0m)
Operating temp: 32° to 120°F (0° to 49°C)
Storage temp: -20° to 150°F (-29° to 66°C)
Operating RH: 80% RH (non-condensing)
Water resistance: Splash and water resistant. Battery compartment keeps battery dry in up to ½" (1.3cm) of water.
Aux. Alarm Relay: 120VAC resistive up to 500mA or 24VDC up to 1amp.

Emerson Control Products, Inc.
1724 Lake Drive West, Chanhassen, Minnesota USA
Customer Service 800-880-6000