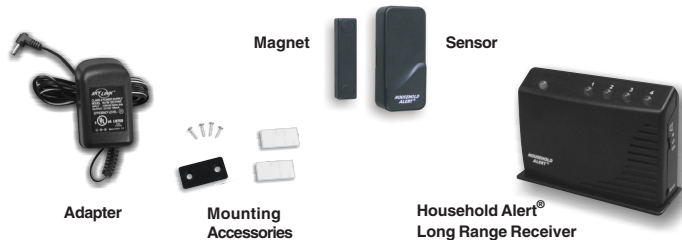


# Wireless Door/Window Alert Model WD-434RTL

## 1. INTRODUCTION

The Wireless Door/Window Alert is designed to monitor any door or window within your house. When the monitored window or door is opened, the receiver will flash along with alert beeping or alarm.

In this package, you should find a sensor, a magnet, a Household Alert® receiver, an adapter, 3V lithium battery (installed) and other mounting accessories.



Please follow the instructions below to setup your door / window sensor and the receiver.

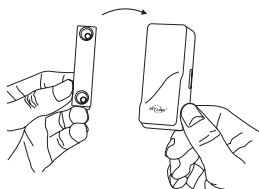
## 2. PROGRAMMING

The sensor must be programmed to the Household Alert® Long Range Receiver before they can communicate. You may program the sensor to one of the 4 zones. Follow the instructions below;

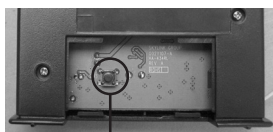
1. Plug in an AC adapter to the receiver.
2. Power up the Receiver unit. The green LED will be on indicating it is turn on.
3. Open the back cover and there is a learn button. Press and hold this learn button for 5 seconds, until both green LED and zone 1 red LED flash. You may now release the learn button.
4. If you would like to program the sensor to zone 1, activate the sensor while the zone 1 red LED is flashing. Activate the Sensor by separating the magnetic contact from the sensor.
5. If you would like to program the sensor to other zones, press the learn button again, until the red LED flashes at the zone you want to program the sensor to, then activate the sensor.
6. Once the sensor is programmed, the green LED will be steadily on and none of the red zone LEDs will be on.



Plug in the adapter to the receiver



Separate the magnet from the sensor, Receiver zone LED stops flashing.

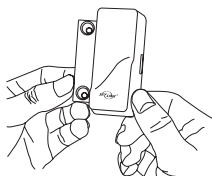


Learn Button

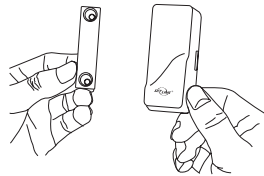
Note: Each zone can program up to 4 sensors. If you try to program a fifth sensor into a zone, the first programmed sensor will be erased.

### Test Sensor

After learning the sensor to the Receiver unit, you may test the communication by placing the magnet beside the sensor (where the red marking is) and remove the magnet from the sensor.



When the magnetic is closed, the receiver will not beep.



When the magnetic contact is broken (open), the receiver will beep and zone LED will flash.

## 2. PROGRAMMING (CONT)

- 1) Zone LED of this sensor will flash.
- 2) Beeping according to the zone number [Operating mode is set to "Alert"]. 1 beep for zone 1, 2 beeps for zone 2 and etc, until the magnetic contact is closed.

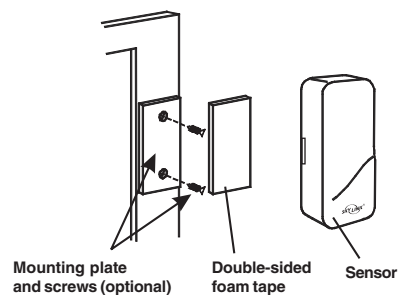
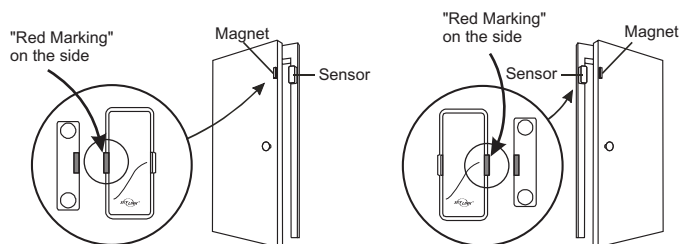
### Erasing a sensor

You cannot erase a specific sensor. You must erase all sensors from the receiver, then program the ones you would like to keep. To erase all the sensors from the receiver:

1. Remove the adapter from the receiver.
2. Open the back cover, press and hold the learn button. Do not release the learn button until step 4.
3. While holding onto the learn button, plug in the adapter to the receiver.
4. You may release the learn button when the LEDs on the receiver are on.
5. You have erased all sensors from the receiver.

## 3. INSTALLATION

The transmitters should be mounted on the door frame or window frame by double sided tape. The magnet should be mounted on the door or window by either double sided tape or screws. Make sure the magnet is aligned with the red marking on the transmitter. If the surface of the frame is flat enough, double-sided foam tape is sufficient, otherwise, it is recommended to screw the mounting plate to the frame, then apply double sided tape. After mounting the sensor, if the Skylink logo is inverted, remove the front cover and rotate it so the Skylink logo is in the upright position.



Mounting plate and screws (optional)

Double-sided foam tape

Sensor

## 4. OPERATION

There are 3 different operating modes for the Household Alert® Long Range Receiver.

- 1) Alert - Beeps when a sensor is activated, corresponding zone LED will also flash.
- 2) Alarm - Sounds an alarm when a sensor is activated, corresponding zone LED will also flash.
- 3) Off - No audio sound will be emitted when sensor is activated. Zone LED will flash to indicate the activated sensor.

To select the operating mode, place the slide switch on the side at the desired setting:

- OFF - No Audio
- ALERT - Alert Mode
- ALARM - Alarm Mode



## 4. OPERATION (CONT)

### Operation

#### Alert

When the magnetic contact is broken, such as when the door or window is open, the sensor will send a signal to the receiver. It will beep and the corresponding zone red LED will flash.

If the sensor is set to zone 1, zone 1 red LED on the receiver will flash, and the receiver will emit a continuous “single beep”, i.e. “beep” pause, “beep”, pause..... etc.

If the sensor is set to zone 4, zone 4 red LED will flash, and the receiver will emit a continuous “4 beeps”, i.e. “beep beep beep beep” pause “beep beep beep beep” pause .....etc.

By the number of beeps emitted by the receiver, user can identify which zone is triggered.

#### Mute

When a sensor is triggered for a long period of time, you may stop the buzzer by pressing the mute button. When another signal comes again, you can disable the buzzer for all currently activated sensors by pressing the mute button. The receiver will beep again if it receives another signal.

For instance, if you know the door / window sensor will be on for a while when another family member is cleaning the window, you may want to disable the buzzer for this sensor. Then you can press the “Mute” button after it starts to sound. If any other sensor is triggered, the receiver will sound again.



#### Alarm

When the receiver is in Alarm operation mode, it will sound its siren when a sensor is activated. The maximum alarm duration is set for 3 minutes. To terminate the siren during the 3-min interval, press the mute button. Although the alarm siren is terminated, if that sensor is still activated, its corresponding LED will continue to flash.

Note: This audio siren is not intended to prevent intruder break-in, it is rather an alert signal indicating a sensor is activated. Therefore, turning off the siren does not require specific password.

#### Off

No audio will be emitted even sensor is activated. Only zone LED will flash.

## 5. LOSS OF SIGNAL INDICATION

When the battery level on the sensor drops to a certain level, or the sensor is out of the operating range, the receiver will show a “loss of signal” indication. The red LED representing that zone will flash rapidly, i.e. if zone 1 sensor is lost, the zone 1 red LED will flash rapidly.

When the loss of signal indication occurs, move the receiver closer to the corresponding sensor and trigger that sensor. If the red LED stops flashing rapidly, that means the receiver or sensor needs to be relocated. If the “loss of signal” indication persists, replace the battery of that sensor.

## 6. OTHER HOUSEHOLD ALERT® SENSORS

The Household Alert® Long Range Receiver can work with up to 4 different sensors: garage door monitor sensor, door / window sensor, water sensor, indoor/outdoor motion sensor, etc. Please visit [www.skylinkhome.com](http://www.skylinkhome.com) or contact us at [support@skylinkhome.com](mailto:support@skylinkhome.com) for more information of how to fully utilize your Wireless Door / Window Alert.

## 7. FCC

This device complies with Part 15 of the FCC Rules. Operation is subject to the following two conditions: (1) This device may not cause harmful interference, and (2) This device must accept any interference received, including interference that may cause undesired operation.

#### WARNING:

Changes or modifications to this unit not expressly approved by the party responsible for compliance could void the user's authority to operate the equipment.

#### NOTE:

This equipment has been tested and found to comply with the limits for a Class B digital device, pursuant to Part 15 of the FCC Rules. These limits are designed to provide reasonable protection against harmful interference in a residential installation. This equipment generates, uses and can radiate radio frequency energy and, if not installed and used in accordance with the instructions, may cause harmful interference to radio communications.

However, there is no guarantee that interference will not occur in a particular installation. If this equipment does cause harmful interference to radio or television reception, which can be determined by turning the equipment off and on, the user is encouraged to try to correct the interference by one or more of the following measures:

- Reorient or relocate the receiving antenna.
- Increase the separation between the equipment and receiver.
- Connect the equipment into an outlet on a circuit different from that to which the receiver is connected.
- Consult the dealer or an experienced radio/TV technician for help.

## 8. WARRANTY

If, within one year from date of purchase, this product should become defective (except battery), due to faulty workmanship or materials, it will be repaired or replaced, without charge. Proof of purchase and a Return Authorization are required.

## 9. CUSTOMER SERVICE

If you would like to order Skylink's products or have difficulty getting them to work or download information and user manual, please :

1. visit our FAQ section at [www.skylinkhome.com](http://www.skylinkhome.com), or
2. email us at [support@skylinkhome.com](mailto:support@skylinkhome.com), or
3. call our toll free at 1-800-304-1187 from Monday to Friday, 9 am to 5 pm EST.  
Fax (800) 286-1320

### CUSTOMER SERVICE

17 Sheard Avenue, Brampton, Ontario, Canada L6Y 1J3  
Email: [support@skylinkhome.com](mailto:support@skylinkhome.com)  
<http://www.skylinkhome.com>  
P/N. 101Z800  
©2010 SKYLINK GROUP