

Q500® M/F/R with SEDEO® PRO

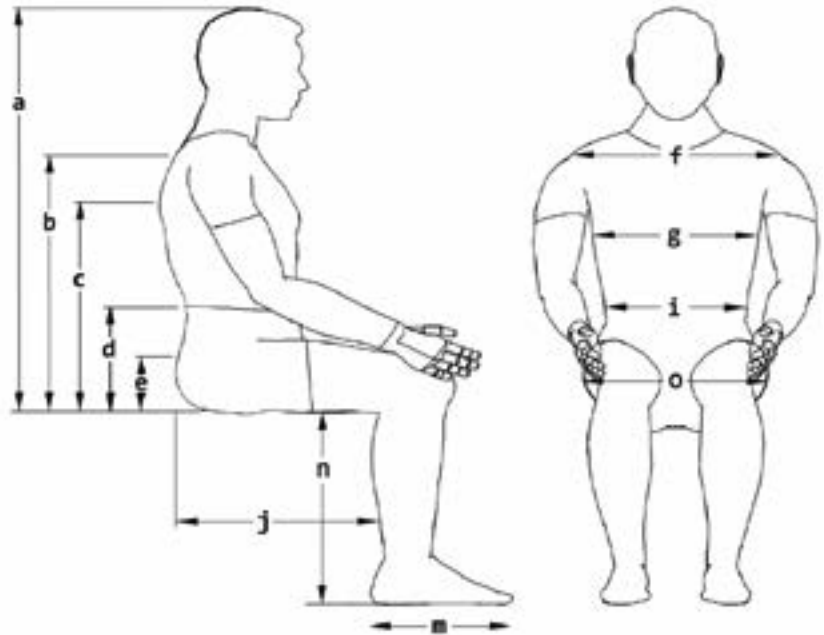


ORDER FORM

Billing Address Or Customer-ID			Shipping Address	Identical To Billing Address
C.-ID:			C.-ID:	
Name:			Name:	
Street:			Street:	
Town/PC:			Town/PC:	
E-Mail:			E-Mail:	
Phone:			Phone:	
Order Information			User Weight	
Order	Calculation	Built-4-Me®	User Weight Capacity: 160 kg	
Purchase Order No.:			User Weight:	kg
Art. No.: Q500 M: 2250050M-000, Q500 F: 2250050F-000, Q500 R: 2250050R-000				
Order Date:	Day	Month	Year	

Client Measurements

a) Top Of Head To Seat	mm
b) Top Of Shoulder To Seat	mm
c) Underarm To Seat	mm
d) Elbow To Seat	mm
e) Top Of Pelvis To Seat	mm
f) Shoulder Width	mm
g) Trunk Width	mm
i) Hip Width	mm
j) Actual Sitting Depth	mm
m) Foot Length	mm
n) Lower Leg Length	mm
o) Actual Seat Width	mm



Seating Specifications

All Bases Prepared For DAHL Docking Station		Seat Type	SEDEO PRO
Typical WC Weight	Without Batteries 140 kg	Seat Size Range	Width 380 - 560 mm, Depth 400 - 560 mm
	With Batteries 165 kg	Seat To Floor Height Range	415 mm - 490 mm

MWD Base Specifications

User Weight Capacity	160 kg	Drive Wheels	13" Drive Wheels (Black)
Base Size	Width Min. 620 mm	Tires / Castors	7" Front / 7" Rear (Black)
Drive Control	VR2, Option R-Net	Charger	8 A Dual Mode Charger
Driving Range	Up To 40 km	Battery Size	60 And 80 Ah Batteries
Drive Motors	4-Pole 6 kph, Options 8, 10 And 12.5 kph	Colour Accents	7 Colour Accents
Ground Clearance	70 mm	Frame Colour	Black

FWD Base Specifications

User Weight Capacity	160 kg	Drive Wheels	13" / 14" Drive Wheels (Black)
Base Size	Width Min. 610 mm	Tires / Castors	9" Rear (Black), Options 10"
Drive Control	VR2, Option R-net	Charger	8 A Dual Mode Charger
Driving Range	Up To 40 km	Battery Size	60 And 80 Ah Batteries
Drive Motors	4-Pole 6 kph, Options 8, 10 And 12.5 kph	Colour Accents	7 Colour Accents
Ground Clearance	65 mm	Frame Colour	Black

RWD Base Specifications

User Weight Capacity	160 kg	Drive Wheels	13" / 14" Drive Wheels (Black)
Base Size	Width Min. 610 mm	Tires / Castors	9" Front (Black), Options 10"
Drive Control	VR2, Option R-net	Charger	8 A Dual Mode Charger
Driving Range	Up To 40 km	Battery Size	60 And 80 Ah Batteries
Drive Motors	4-Pole 6 kph, Options 8, 10 And 12.5 kph	Colour Accents	7 Colour Accents
Ground Clearance	65 mm	Frame Colour	Black

Base

Q500 Drive Bases

		£
QOP000023	Q500 M (MWD Base Chair)	4,995
QOP000024	Q500 F (FWD Base Chair)	5,200
QOP000029	Q500 R (RWD Base Chair)	5,200

Motor Packages

		£
QOP180009	4-Pole Motor, 6 kph / 4 mph	0
QOP180010	4-Pole Motor, 8 kph / 5 mph	150
QOP180007	4-Pole Motor, 10 kph / 6.5 mph (1) (2)	300
QOP180008	4-Pole Motor, 12.5 kph / 8 mph (1) (3)	375

Tracking

		£
QOP110009	Traction Control System For R-Net (GYRO Technology)	300
QOP110014	Omit Traction Control System For R-Net	0

Drive Wheels 

		£
MWD/FWD/RWD Base		
QOP070065	Drive Wheel, 13", Pneumatic, Knobbly, Black	0
QOP070069	Drive Wheel, 13", Solid, Knobbly, Black	0
FWD/RWD Base		
QOP070032	Drive Wheel, 14", Pneumatic, V-Type, Black	0
QOP070031	Drive Wheel, 14", Solid, V-Type, Black	0
QOP070034	Drive Wheel, 14", Pneumatic, Knobbly, Black	0
QOP070033	Drive Wheel, 14", Solid, Knobbly, Black	0

Castor Wheels 

		£
MWD Base		
QOP080213	Castor Wheel, 7", Solid, Black	0
FWD Base		
QOP080210	Castor Wheel, 9", Solid, Black	0
QOP080211	Castor Wheel, 9", Pneumatic, Black	0
RWD Base		
QOP080210	Castor Wheel, 9", Solid, Black	0
QOP080211	Castor Wheel, 9", Pneumatic, Black	0
QOP080212	Castor Wheel, 10", Pneumatic, Black	0

Mudguards (FWD/RWD Only) 

		£
QOP010007	Mudguard, Drive Wheel, 14"	90
QOP010008	Mudguard, Castor Wheel, 9"	70

Kerb Climber (RWD Only) 

		£
QOP090038	Kerb Climber	170

(1) Highly Recommended With 80 Ah Battery

(2) If FWD Selected: Highly Recommended With Traction Control System

(3) If FWD Selected: Only In Combination With Traction Control System

Base

Colour Accents

£

QOP140005	Apple Green (RAL 110 70 77)	0
QOP140004	Black (RAL 9005)	0
QOP140003	Blue (RAL 260 40 45)	0
QOP140006	Orange (RAL 060 60 80)	0
QOP140002	Red (RAL 040 40 67)	0
QOP140007	Silver (RAL 9006)	0
QOP140001	White (RAL 9010)	0

LED Lights & Indicators

£

QOP110201	LED Light And Indicator StVZO Approved (1)	295
QOP110209	Omit Light And Indicator	0

Seat Heights (2)

£

SH415	415 mm (3)(4)	0
SH425	425 mm (5)	0
SH44	440 mm (4)	0
SH45	450 mm (5)	0
SH465	465 mm	0
SH49	490 mm	0

Batteries & Chargers

£

Batteries

QOP160001	Battery, 60 Ah, Gel, Maintenance-Free	0
QOP160005	Battery, 80 Ah, Gel, Maintenance-Free (6)	120
QOP160009	Omit Batteries	0

Chargers

QOP160101	Charger, Automatic, 220 V / 8 A	0
QOP160100	Charger, Automatic, 220 V / 8 A, UK	0
QOP160103	Charger, Automatic, 220 V / 10 A, UK	170
QOP160104	Charger, Automatic, 220 V / 10 A	170
QOP160109	Omit Charger	0

(1) QOP110030 Lighting Module VR2 Or QOP110032 Actuator Control & Lights Module, R-Net, ISM-6L Required

(2) Measured From Front Of Seat Pan To Floor. Obtain Quote To Verify Seat To Floor Heights

(3) Only With 60 Ah Batteries

(4) Not With QOP130009 Seat Elevator/Tilt Module, Powered

(5) Only For QOP130009 Seat Elevator (300 mm) / Tilt Module (Tilt 0° - 30°), Powered

(6) Highly Recommended With Battery Charger 220 V / 10 A

Powered Seating

Power Seating Options

		£
QOP130011	Fixed Tilt Module (Adjustable 0°, 3°, 6°, 9°, Factory Setting 6°)	0
QOP130004	Posterior Tilt, Powered, 0° - 30° (1)	825
QOP130012	Posterior Tilt, Powered, -5° - 25° (1) (2)	925
QOP130007	Posterior Tilt, Powered, 0° - 50° (1)	1025
QOP130005	Posterior Tilt, Powered, -5° - 45° (1) (2)	1125
QOP130009	Seat Elevator (300 mm) / Tilt Module (Tilt 0° - 30°), Powered (1)	1500

Backrest Frame Type

		£
QOP030083	Backrest, Tool Angle Adjustable, 90° - 120°	0
QOP030084	Backrest, Manual Recline, User Adjustable, 90° - 130°, Release Lever, Right (3)	230
QOP030085	Backrest, Manual Recline, User Adjustable, 90° - 130°, Release Lever, Left (3)	230
QOP030086	Backrest, Powered Recline, 90° - 130° (1)	420
QOP030087	Backrest, Powered Recline, 90° - 150° With 100 mm Mechanical Anti-Shear (1)	750

Backrest Frame Option

		£
QOP030098	Backrest, Flip Down, Quick Release	95

Back Cushion Type

		£
SEDEO PRO (See Section A)		
QOP030104	SEDEO PRO, Back Cushion	0
Interfaces 		
QOP030106	SEDEO PRO, Interface Only	0
QOP030107	SEDEO PRO, Interface Only For Back Cushion, Flexible	0
QOP030209	Omit Back Cushion	0

A – SEDEO PRO Back Size

		£
Back Cushion Width		
BW38	380 mm, For Effective Back Width 380 mm	0
BW42	420 mm, For Effective Back Width 380 - 420 mm	0
BW46	460 mm, For Effective Back Width 420 - 460 mm	0
BW50	500 mm, For Effective Back Width 460 - 500 mm	0
BW54	540 mm, For Effective Back Width 500 - 540 mm	0
BW56	560 mm, For Effective Back Width 520 - 560 mm	0
Back Cushion Height		
BH44	440 mm, For Effective Back Height 440 - 500 mm (4)	0
BH50	500 mm, For Effective Back Height 500 - 560 mm	0
BH56	560 mm, For Effective Back Height 560 - 620 mm	0

A – SEDEO PRO Back Cushion

		£
QOP030109	SEDEO PRO, Back Cushion, Profiled	105
QOP030113	SEDEO PRO, Back Cushion, Profiled, Adjustable Straps	195
QOP030114	SEDEO PRO, Back Cushion, Deep Contour, Passive	250
QOP030115	SEDEO PRO, Back Cushion, Flexible, Deep Contour, Passive, Adjustable Straps	325
QOP030116	SEDEO PRO, Back Cushion, Flexible, Deep Contour, Active, Adjustable Straps	325
QOP030117	SEDEO PRO, Back Cushion, Flexible, Extra Deep Contour, Active, Adjustable Straps	350
	SEDEO PRO, Back Cushion, Adaptive (Choose B4Me Requirements Separately)	

(1) Not With QOP110036 Remote Joystick, VR2. In Case Of R-Net: QOP110032 Actuator Control & Lights Module, R-Net, ISM-6L

(2) Not With Seat Height 415 Or 440 mm

(3) Not On Same Joystick Side

(4) Only With QOP030116 SEDEO PRO, Back Cushion, Flexible, Deep Contour, Active, Adjustable Straps & QOP030117 SEDEO PRO, Back Cushion, Flexible, Extra Deep Contour, Active, Adjustable Straps

Powered Seating

A – SEDEO PRO Back Cushion Cover

£

QOP030059	Back Cushion Cover, Incontinence Protection	0
QOP030108	Back Cushion Cover, Comfort	50

A – SEDEO Lateral Thoracic Supports

£

QOP030607	SEDEO, Lateral, Thoracic Support, Swing Away, Height-Adjustable, Long Pad, 150 x 130 mm, Right	270
QOP030608	SEDEO, Lateral, Thoracic Support, Swing Away, Height-Adjustable, Long Pad, 150 x 130 mm, Left	270
QOP030609	SEDEO, Lateral, Thoracic Support, Swing Away, Height-Adjustable, Short Pad, 90 x 120 mm, Right	270
QOP030610	SEDEO, Lateral, Thoracic Support, Swing Away, Height-Adjustable, Short Pad, 90 x 120 mm, Left	270

Headrest Pad

£

QOP030430	SEDEO, Headrest Pad, Small, (LxH) 240 x 150 mm (1)	70
QOP030431	SEDEO, Headrest Pad, Small, With Cover, (LxH) 240 x 150 mm (1)	80
QOP030432	SEDEO, Headrest Pad, Flexible, (LxH) 400 x 110 mm (1)	120
WHT030401	Whitmyer, Headrest Pad, Plush, (LxH) 203 x 127 mm (2)	100
WHT030402	Whitmyer, Headrest Pad, Plush, (LxH) 254 x 127 mm (2)	110
WHT030403	Whitmyer, Headrest Pad, Plush, (LxH) 356 x 127 mm (2)	120
WHT030404	Whitmyer, Headrest Pad, Adjust-A-Plush, Small, (LxH) 355 x 76 mm (2)	160
WHT030406	Whitmyer, Headrest Pad, Adjust-A-Plush, Large, (LxH) 460 mm x 127 mm (2)	180

Headrest Mount (3)

£

QOP030433	SEDEO, Headrest Mount	100
QOP030434	SEDEO, Headrest Mount, With Quick Release	110
WHT030407	Whitmyer, Headrest Mount, LINX	120
WHT030408	Whitmyer, Headrest Mount, LINX ²	120
WHT030409	Whitmyer, Headrest Mount, AXYS	100
WHT030410	Whitmyer, Headrest Mount, AXYS, Offset	110
WHT030411	Whitmyer, Headrest Mount, COBRA XTRA Flip Back	150

Headrest Receiver

£

QOP030119	Headrest Receiver, Back Cushion Mount (4)	0
QOP030120	Headrest Receiver, Backrest Frame Mount	0

Push Handles

£

QOP030204	Push Handles, Height-Adjustable	150
-----------	---------------------------------	-----

Seat Rail

£

QOP020085	Seat Rail, Short, For Seat Depth 400 - 520 mm	0
QOP020069	Seat Rail, Long, For Seat Depth 460 - 560 mm (5)	0

(1) Only Use With SEDEO Headrest Mount

(2) Only Use With Whitmyer Headrest Mount

(3) Choose A Whitmyer Headrest Mount And Headrest Receiver In Case You Would Like To Add A Head Control In The Special Control Section

(4) Only With QOP030109 SEDEO PRO, Back Cushion, Profiled & QOP030113 SEDEO PRO, Back Cushion, Profiled, Adjustable Straps & QOP030114 SEDEO PRO, Back Cushion, Deep Contour, Passive

(5) Not With Seat Width 380 & 400 mm

Powered Seating

Seat Cushion Type

£

SEDEO (See Section C)

QOP020027	SEDEO, Seat Cushion	0
-----------	---------------------	---

JAY (See Section D)

QOP020515	JAY, Seat Cushion	0
-----------	-------------------	---

Omit (Select Seat Width And Depth in Section C)

QOP020070	Omit Seat Cushion	0
-----------	-------------------	---

C – SEDEO Seat Size

£

Seat Cushion Width

SW38	380 mm, For Effective Seat Width 380 mm	0
SW42	420 mm, For Effective Seat Width 380 - 420 mm	0
SW46	460 mm, For Effective Seat Width 420 - 460 mm	0
SW50	500 mm, For Effective Seat Width 460 - 500 mm	0
SW54	540 mm, For Effective Seat Width 500 - 540 mm	0
SW56	560 mm, For Effective Seat Width 520 - 560 mm	0

Seat Cushion Depth

SD40	400 mm, Comes With Cushion Size 460 mm	0
SD42	420 mm, Comes With Cushion Size 460 mm	0
SD44	440 mm, Comes With Cushion Size 460 mm	0
SD46	460 mm, Comes With Cushion Size 500 mm	0
SD48	480 mm, Comes With Cushion Size 500 mm	0
SD50	500 mm, Comes With Cushion Size 500 mm	0
SD52	520 mm, Comes With Cushion Size 560 mm	0
SD54	540 mm, Comes With Cushion Size 560 mm	0
SD56	560 mm, Comes With Cushion Size 560 mm	0

C – SEDEO Seat Cushions

£

QOP020073	SEDEO, Seat Cushion, Profiled, Height 70 mm	110
QOP020075	SEDEO, Seat Cushion, Support, Height 90 mm	160
QOP020076	SEDEO, Seat Cushion, Support Memory, Height 90 mm	190
QOP020078	SEDEO, Seat Cushion, Stabilizer, Height 90 mm	210
	SEDEO, Seat Cushion, Adaptive (Choose B4Me Requirements Separately)	

C – SEDEO Seat Cushion Cover

£

QOP020518	Seat Cushion Cover, Incontinence Protection	0
QOP020080	Seat Cushion Cover, Comfort	50

C – SEDEO Seat Boards

£

QOP020082	SEDEO, Seat Board, Flat, Depth-Adjustable, Cushions Guide At Rear	100
QOP020083	SEDEO, Seat Pan, 50 mm, Depth-Adjustable, Cushions Guide At Rear	110
QOP020084	SEDEO, Seat Pan, 75 mm, Depth-Adjustable, Cushions Guide At Rear (2)	120

(1) Only With QOP020518 Seat Cushion Cover, Incontinence Protection, Only For NL

(2) Only For NL

Powered Seating

D – JAY Seat Size

£

Seat Cushion Width

SW40	400 mm	0
SW42	420 mm	0
SW44	440 mm	0
SW46	460 mm	0
SW48	480 mm	0
SW50	500 mm, Comes With Cushion Size 500 mm	0
SW52	520 mm, Comes With Cushion Size 500 mm	0
SW54	540 mm, Comes With Cushion Size 560 mm	0
SW56	560 mm, Comes With Cushion Size 560 mm	0

Seat Cushion Depth

SD40	400 mm	0
SD42	420 mm	0
SD44	440 mm	0
SD46	460 mm	0
SD48	480 mm	0
SD50	500 mm	0
SD52	520 mm	0
SD54	540 mm (1)	0
SD56	560 mm (1)	0

D – JAY Seat Cushions

£

JAY020005	JAY Easy Fluid With Flat Base	308
JAY020003	JAY Soft Combi P	77
JAY020006	JAY Easy Visco With Flat Base	132
JAY020010	JAY Balance, Air, Single Valve, Microclimatic Cover, Until Seat Width 500 mm	503
JAY020012	JAY Balance, Air, Single Valve, Microclimatic Cover, From Seat Width 560 mm	503
JAY020014	JAY Balance, Air, Single Valve, Microclimatic Cover, With Positioning Kit, Until Seat Width 500 mm	568
JAY020016	JAY Balance, Air, Single Valve, Microclimatic Cover, With Positioning Kit, From Seat Width 560 mm	568
JAY020011	JAY Balance, Fluid, Microclimatic Cover, Until Seat Width 500 mm	468
JAY020013	JAY Balance, Fluid, Microclimatic Cover, From Seat Width 560 mm	468
JAY020015	JAY Balance, Fluid, Microclimatic Cover, With Positioning Kit, Until Seat Width 500 mm	533
JAY020017	JAY Balance, Fluid, Microclimatic Cover, With Positioning Kit, From Seat Width 560 mm	533
JAY020018	JAY Xtreme Active	506
JAY020023	JAY Leg Support Kit For The Xtreme Active (2)	39
JAY020019	JAY J2 Cushion, Until Seat Width 460 mm Or Seat Depth 480 mm	492
JAY020021	JAY J2 Cushion, From Seat Width 480 mm Or Seat Depth 500 mm	492
JAY020020	JAY J2 Cushion, Deep Contour, Until Seat Width 480 mm	525
JAY020022	JAY J2 Cushion, Deep Contour, From Seat Width 500 mm	525

Knee & Thigh Supports

£

QOP020342	Knee Support, Lateral, 120 x 120 mm, Swing Away, Right (3)	160
QOP020341	Knee Support, Lateral, 120 x 120 mm, Swing Away, Left (3)	160
QOP020344	Thigh Support, Lateral, Small, 120 x 120 mm, Swing Away, Right (4)	200
QOP020343	Thigh Support, Lateral, Small, 120 x 120 mm, Swing Away, Left (4)	200
QOP020347	Thigh Support, Lateral, Large, 180 x 120 mm, Swing Away, Right (4)	200
QOP020346	Thigh Support, Lateral, Large, 180 x 120 mm, Swing Away, Left (4)	200

(1) Only With Seat Width 560 mm

(2) Only For Cushions With Seat Depth 420 - 500 mm

(3) Not With QOP050015-17 SEDEO PRO, Legrest, Swing Away, QOP050080 SEDEO PRO, Hanger

Receivers Only, QOP090122 Transfer Bar

(4) Not With Seat To Floor Height 415 mm, Not With QOP040035 Side Guard, Wedge Shaped, Padded

Powered Seating

Armrest Types

		£
QOP040019	Armrest, Single Post, Flip Back (1)	0
QOP040021	Armrest, Single Post, Removable (1)	0
QOP040123	Armrest, Reclining, Flip Back	75

Arm Pads

		£
QOP040023	Arm Pad, Integral Foam, 300 mm, Right	0
QOP040024	Arm Pad, Integral Foam, 300 mm, Left	0
QOP040025	Arm Pad, Integral Foam, 400 mm, Right	0
QOP040026	Arm Pad, Integral Foam, 400 mm, Left	0
QOP040027	Arm Pad, Integral Foam, 450 mm, Right (2)	0
QOP040028	Arm Pad, Integral Foam, 450 mm, Left (2)	0
QOP040029	Omit Arm Pad, Right	0
QOP040030	Omit Arm Pad, Left	0

Comfort Arm Pads

QOP040204	Arm Pad, Comfort, Padded, PU Coated, 400 mm, Right	115
QOP040203	Arm Pad, Comfort, Padded, PU Coated, 400 mm, Left	115

Hemiplegia Arm Pads

QOP040031	Arm Pad, Hemiplegia, Integral Foam, Right (3)	205
QOP040032	Arm Pad, Hemiplegia, Integral Foam, Left (4)	205

Side Guard Pads For Armrest

		£
Side Guard Pads For Armrest, Single Post, Flip Back / Removable		
QOP040033	Side Guard (5)	0
QOP040034	Side Guard, Integral Foam (6)	95
QOP040035	Side Guard, Wedge Shaped, Padded (7)	200

Side Guard Pads For Armrest, Reclining, Flip Back

QOP040036	Side Guard, Mounted On Seat Rail Bracket (8)	0
-----------	--	---

Centre Mount Legrest

QOP050086	Centre Mount Legrest, Tool Adjustable, With Flip Up And Angle-Adjustable Footboard (9) (10)	0
-----------	---	---

Pad Options

QOP050087	Centre Calf Support, Integral Foam	10
QOP050092	Calf Pad, Integral Foam, Pair	20

Power Centre Mount Legrest

QOP050076	Centre Mount Legrest, Powered, 90° - 180°, 175 mm Extension (10) (11)	1100
QOP050071	Centre Mount Legrest, Powered, 90° - 180°, 175 mm Extension, Footplate To Floor (10) (11)	1300

Footplates

QOP050072	Footplate, Dual, Height- And Angle-Adjustable, 260 x 150 mm	0
QOP050073	Footplate, Dual, Height- And Angle-Adjustable, Large, 310 x 170 mm	0

Pad Options

QOP050075	Calf Pad, Padded, Pair	0
-----------	------------------------	---

(1) Not With Seat To Floor Height 415 mm

(2) With QOP040019 Flip Back Armrest, Seat Width +20 mm

(3) Not With QOP110052 Joystick Mount, Right, QOP090040 Tray Table, Swing Away, QOP090046

Tray Table, Half-Side, Swing Away, QOP090110 Rear View Mirror, Right

(4) Not With QOP110053 Joystick Mount, Left, QOP090040 Tray Table, Swing Away, QOP090046

Tray Table, Half-Side, Swing Away, QOP090118 Rear View Mirror, Left

(5) Not With QOP040123 Armrest, Reclining, Flip Back

(6) Seat Width -20 mm Not With QOP040123 Armrest, Reclining, Flip Back

(7) Seat Width -80 mm, Only With QOP040021 Armrest, Single Post, Removable

(8) Only With QOP040123 Armrest, Reclining, Flip Back

(9) In Combination With Lift Or Tilt, Choose QOP050087 Centre Calf Support, Integral Foam Or

QOP050092 Calf Pad, Integral Foam, Pair

(10) Not With RWD

(11) Not With QOP110036 Remote Joystick, VR2; QOP110037 Remote Joystick, VR2, 2 Actuators & QOP110040 Remote Joystick, VR2, 2 Actuators And Lights. In Case Of R-Net: QOP110032 Actuator Control & Lights Module, R-Net, ISM-6L

Powered Seating

SEDEO PRO Swing Away Legrest

£

QOP050015	SEDEO PRO, Legrest, 70°, Swing Away	0
QOP050016	SEDEO PRO, Legrest, Manual Elevating, Swing Away	270
QOP050017	SEDEO PRO, Legrest, Power Elevating, Swing Away	500
QOP050080	SEDEO PRO, Hanger Receivers Only	0
QOP050000	Omit Legrest	0

Footplates

QOP050088	Footplate, For Seat Width 385 - 400 mm	0
QOP050089	Footplate, For Seat Width 420 - 460 mm	0
QOP050090	Footplate, For Seat Width 480 - 520 mm	0
QOP050091	Footplate, For Seat Width 540 - 560 mm	0
QOP050081	Footplates, Coupled (1) (2)	0

Support Options

QOP050082	Calf Support, Integral Foam, Depth-Adjustable, Pair	80
QOP050083	Calf Support, Padded, Depth-Adjustable, Pair	95
QOP050084	Heel Loop	15
QOP050085	Calf Strap (2)	0
QOP050200	Knee Pad, Integral Foam	50

Amputee Support (3)

QOP050013	Amputee Support, Padded, Right	100
QOP050014	Amputee Support, Padded, Left	100

Positioning Supports & Accessories

£

QOP090128	Positioning Belt, Carseat Buckle, Short, 50 mm x 1700 mm	0
QOP090129	Positioning Belt, Carseat Buckle, Long, 50 mm x 2700 mm	20
QOP090110	Rear View Mirror, Right (4)	40
QOP090118	Rear View Mirror, Left (4)	40
QOP090009	Crutch Holder (5)	50
QOP090119	Brackets For Bag On Backrest Frame (5)	25
QOP090120	Bag For Armrest (6)	80
QOP090122	Transfer Bar (7)	110
QOP030605	Abduction Pommel (8)	190

Tray Table (Mounted Opposite Joystick)

QOP090040	Tray Table, Width-Adjustable, Swing Away	250
QOP090046	Tray Table, Half-Side, Swing Away (9)	200

Tray Table Accessories

QOP090125	Partial Padding For Tray Table	15
QOP090126	Raised Edges, Acrylic For Tray Table	20
QOP090127	Elbow Pads, Padded, Pair For Tray Table	30

(1) Choose Also A Footplate

(2) Only For QOP050015 SEDEO PRO, Legrest, 70°, Swing Away

(3) Extra On A Set Of Swing Away Legrests, Attached Lose

(4) Not In Combination With Same Entry Side QOP090040 Tray Table, Swing Away, QOP090046 Tray Table, Half-Side, Swing Away

(5) Not With QOP030086 Powered Recline, 90° - 130°, QOP030087 Powered Recline, 90° - 150° With 100 mm Mechanical Anti-Shear

(6) Not With QOP040123 Armrest, Reclining, Flip Back

(7) Not With QOP020342/QOP020341 Knee Support, Lateral, Swing Away, Right/Left &

QOP050015-17 SEDEO PRO, Legrest, Swing Away & QOP050080 SEDEO PRO, Hanger Receivers Only

(8) Not With (Power) Centre Mount Legrests

(9) Not With QOP090125-127 Tray Table Accessories

Joystick / Electronics**Remote Joystick – VR2** 

£

QOP110036	Remote Joystick, VR2	0
QOP110037	Remote Joystick, VR2, 2 Actuators	0
QOP110040	Remote Joystick, VR2, 2 Actuators And Lights	0

Joystick Mounting 

£

QOP110050	Joystick Mounting, Fixed	0
QOP110056	Joystick Mounting, Parallel, Swing Away, Capsulated	60

Joystick Mounting Location

£

QOP110052	Joystick Mounting Location, Right	0
QOP110053	Joystick Mounting Location, Left	0

Joystick Knobs (Optional) 

£

QOP090505	Joystick Knob, Golf Ball, Ø 42 mm	30
QOP090506	Joystick Knob, T-Bar, 82 mm Wide	30
QOP090507	Joystick Knob, Soft Ball, Ø 70 mm	30
QOP090508	Joystick Knob, Ball, Ø 35 mm	30
QOP090045	Joystick Knob, Allround, Ball, Ø 48 mm	30
QOP090509	Joystick Knob, Chin Cup, Ø 37 mm	30
QOP090512	Joystick Knob, Stick, 80 x 15 mm	30
QOP090511	Joystick Knob, Mushroom, Ø 45 mm	30

Power Module – VR2

£

QOP110002	Power Module, VR2, 90 A	0
-----------	-------------------------	---

Lighting Module – VR2

£

QOP110030	Lighting Module, VR2 (1)	0
-----------	--------------------------	---

Attendant Controls

£

QOP110021	Attendant Control, Dual	320
QOP110020	Joystick Mounted As Attendant Control (2)	195

Attendant Mounting Location

QOP110025	Attendant Mounting Location, Right	0
QOP110026	Attendant Mounting Location, Left	0

4-Actuator Control Box (Direct Actuator Control)

£

QOP110054	4-Actuator Control Box Attached To Armrest, Right	350
QOP110055	4-Actuator Control Box Attached To Armrest, Left	350

(1) If LED Light And Indicator Is Chosen, Then This Is Required
(2) Choose Also Remote Joystick

Joystick / Electronics**Remote Joystick – R-Net** 

£

QOP110015	Remote Joystick, R-Net, LED, Actuators	350
QOP110016	Remote Joystick, R-Net, LED, Actuators And Lights	350
QOP110017	Remote Joystick, R-Net, Colour LCD	450
QOP110018	Remote Joystick, R-Net, Colour LCD, Heavy Duty	900
QOP110013	Remote Joystick, R-Net, High Resolution Colour LCD, Advanced, Infrared Control Included	550
QOP110023	Remote Joystick, R-Net, High Resolution Colour LCD, Advanced, Infrared And Bluetooth Control Included	700
QOP110019	Omit Remote Joystick, R-Net	0

Joystick Mounting 

£

QOP110050	Joystick Mounting, Fixed	0
QOP110056	Joystick Mounting, Parallel, Swing Away, Capsulated	60

Joystick Mounting Location

£

QOP110052	Joystick Mounting Location, Right	0
QOP110053	Joystick Mounting Location, Left	0

Display Language Selection

£

QOP119001	English	0
-----------	---------	---

Joystick Knobs (Optional)

£

QOP090505	Joystick Knob, Golf Ball, Ø 42 mm	30
QOP090506	Joystick Knob, T-Bar, 82 mm Wide	30
QOP090507	Joystick Knob, Soft Ball, Ø 70 mm	30
QOP090508	Joystick Knob, Ball, Ø 35 mm	30
QOP090045	Joystick Knob, Allround, Ball Ø 48 mm	30
QOP090509	Joystick Knob, Chin Cup, Ø 37 mm	30
QOP090512	Joystick Knob, Stick, 80 x 15 mm	30
QOP090511	Joystick Knob, Mushroom, Ø 45 mm	30

Power Modules – R-Net 

£

QOP110003	Power Module, R-Net, 90 A (1)	0
QOP110004	Power Module, R-Net, 120 A	100

Seating / Lighting Module Control – R-Net 

£

QOP110032	Actuator Control & Lights Module, R-Net, ISM-6L	0
-----------	---	---

Attendant Controls 

£

QOP110021	Attendant Control, Dual	320
QOP110020	Joystick Mounted As Attendant Control (1)	195

Attendant Mounting Location

QOP110025	Attendant Mounting Location, Right	0
QOP110026	Attendant Mounting Location, Left	0

(1) Choose Also Remote Joystick

Joysticks / Electronics

Table Top Controls

£

QOP110143	Table Top Control, LCD, Centre Tray Mounted	1600
-----------	---	------

Tray Table Mounting Location

QOP110080	Tray Table Mounting Location, Left	0
QOP110081	Tray Table Mounting Location, Right	0

#1 Ctrl+5 Switch Box Options

£

QOP110043	#1 Ctrl+5 Switch Box With Free Assignable Functions	650
-----------	---	-----

#1 Ctrl+5 Switch Box Mounting Location

QOP110180	#1 Ctrl+5 Switch Box Mounting Location, Behind Joystick (1)	0
QOP110181	#1 Ctrl+5 Switch Box Mounting Location, Opposite Joystick	0

#1 Ctrl+5 Switch Type

QOP110175	#1 Ctrl+5 Switch Type With Push Buttons	0
QOP110176	#1 Ctrl+5 Switch Type With Toggle Switches	0

Bluetooth Mouse Modules / Electronics – R-Net

£

QOP090068	Bluetooth Mouse Module, R-Net	215
QOP090141	2nd Bluetooth Mouse Module, R-Net (Android And Windows)	215
QOP090142	iOS Bluetooth Mouse Module, R-Net (Apple, iOS)	215

Special Controls

OMNI Input Control Module – R-Net ⁽²⁾

£

QOP110101	OMNI Input Control Module, R-Net (3)	876
QOP110102	OMNI Input Control Module, R-Net, Scanning Mode	876

OMNI Module Mount ⁽⁴⁾

£

QOP110126	OMNI Module, Fixed Mount, Right	0
QOP110127	OMNI Module, Fixed Mount, Left	0
QOP110128	OMNI Module, Swing Away Mount, Right	60
QOP110129	OMNI Module, Swing Away Mount, Left	60

(1) Not Possible With QOP110056 Joystick Mounting, Parallel Swing Away, Capsulated (Here We Can't Swing Away)

(2) Choose OMNI Mount And Input Device in Sections Below And Choose Switches in Section E

(3) Display With Built In Infrared & Armrest Mount, Required For Specialty Input Devices

(4) If Used With Standard Joystick Selection, It Must Be Mounted Opposite Side

Hand Control (1)

£

Proportional Input Devices

QOP110301	Hand Control, Switch-It MicroGuide	2250
QOP110302	Hand Control, Switch-It MicroPilot	2500
QOP110303	Hand Control, Switch-It TouchDrive 2	3300
QOP110304	Hand Control, Switch-It VersaGuide	800
QOP110305	Hand Control, Switch-It VersaGuide EZ (2)	950
QOP110306	Hand Control, Allround Joystick	800
QOP110307	Hand Control, Allround Joystick Light (3)	950
QOP110308	Hand Control, Allround Joystick Heavy Duty	1500
QOP110309	Hand Control, Allround Joystick, R-Net Bus Enabled (4)	850
QOP110310	Hand Control, Allround Joystick Light, R-Net Bus Enabled (4)	1000
QOP110311	Hand Control, Allround Joystick Heavy Duty, R-Net Bus Enabled (4)	1600

Hand Control Mounting Platforms

£

QOP110342	Hand Control Mounting, Link-It To The Space Disk, Hand Tray (5)	500
-----------	---	-----

Hand Control Mounting 

QOP110350	Hand Control Mounting, Link-It To The Armrest, Fixed	150
QOP110353	Hand Control Mounting, Link-It To The Armrest, Swing Away	250

Hand Control Mounting Location

QOP110362	Hand Control Mounting Location, Right	0
QOP110361	Hand Control Mounting Location, Left	0

Head Control (6) 

£

Proportional Input Devices

QOP110370	Head Control, Switch-It Dual Pro, 3-Way Proportional, Facial Pads	4300
QOP110371	Head Control, Switch-It Dual Pro, 3-Way Proportional, Spot Pads	4300
QOP110372	Head Control, Switch-It RIM, 3-Way Proportional	3200

Switched Input Devices

QOP110401	Head Control, 3-Switch Head Array, Wings, Short, Curved	3400
QOP110402	Head Control, 3-Switch Head Array, Wings, Short, Straight	3400
QOP110403	Head Control, 3-Switch Head Array, Wings, Long, Curved	3400
QOP110404	Head Control, 3-Switch Head Array, Wings, Long, Straight	3400
QOP110405	Head Control, 4-Switch Head Array, Wings, Long, Straight	3800
QOP110406	Head Control, 5-Switch Head Array, Wings, Long, Straight	4100
QOP110069	Head Control, 5-Switch Head Array, Wings, Long, Straight	4100

(1) For Switch Selection See Section E

(2) Not With QOP090512 Joystick Knob, Stick, 80 x 15 mm, QOP090511 Joystick Knob, Mushroom, Ø 45 mm, QOP090506 Joystick Knob, T-Bar, 82 mm Wide

(3) Only Use With Default Joystick Knob Or Joystick Knob, Allround, Ball Ø 48 mm

(4) OMNI Module Not Required

(5) Only For Micro Series Joysticks

(6) For Switch Selection See Section E. Choose A Whitmyer Headrest Mount On Previous Pages

Chin Control 

£

Proportional Input Devices

QOP110470	Chin Control, Switch-It MicroGuide	2250
QOP110471	Chin Control, Switch-It MicroPilot	2500
QOP110472	Chin Control, Switch-It VersaGuide	800
QOP110473	Chin Control, Switch-It VersaGuide EZ	950
QOP110474	Chin Control, Allround Joystick	800
QOP110475	Chin Control, Allround Joystick Light	950
QOP110476	Chin Control, Allround Joystick, R-Net Bus Enabled (1)	850
QOP110477	Chin Control, Allround Joystick Light, R-Net Bus Enabled (1)	1000

Chin Control Mounting 

QOP110480	Chin Control Mounting, Link-It To Chin Harness, Small (2)	450
QOP110481	Chin Control Mounting, Link-It To Chin Harness, Large (2)	500
QOP110483	Chin Control Mounting, Link-It To Manual Chin Boom, Backrest Mount, Right	400
QOP110484	Chin Control Mounting, Link-It To Manual Chin Boom, Backrest Mount, Left	400
QOP110485	Chin Control Mounting, Link-It To Power Chin Boom, Backrest Mount, Right	2000
QOP110486	Chin Control Mounting, Link-It To Power Chin Boom, Backrest Mount, Left	2000
QOP110487	Chin Control Mounting, Link-It To Headrest, Swing Away, Left	350
QOP110488	Chin Control Mounting, Link-It To Headrest, Swing Away, Right	350

Link-It Extension Kit

QOP110590	Link-It Extension Kit, Base Module, 100 mm Extension Tube, 5 Cable Clips	120
QOP110591	Link-It Extension Kit, Base Module, 150 mm Extension Tube, 5 Cable Clips	150

Sip 'N Puff (3)

£

QOP110510	Sip 'N Puff With Link-It Hardware, Swing Away Mount To The Headrest (4)	500
-----------	---	-----

(1) OMNI Module Not Required

(2) If Switches Required Only Allround Joystick With Satellite Switches Available

(3) For Switch Selection See Section E

(4) Headrest To Be Selected

Special Controls

E – Switches (1)

£

QOP110520	Buddy Button – Black	87
QOP110521	Buddy Button – Red	87
QOP110522	Buddy Button – Green	87
QOP110523	Egg Switch – Black	95
QOP110524	MicroLite Switch – Black	140
QOP110526	Piko Button – Black	87
QOP110527	Piko Button – Blue	87
QOP110528	Piko Button – Green	87
QOP110529	Piko Button – Red	87
QOP110530	Piko Button – Yellow	87
QOP110534	Twister Switch – Black	140
QOP110535	Twister Switch – Green	140
QOP110536	Twister Switch – Red	140

Switch Mounting

QOP110560	Switch Mounting, Link-It To The Hand Control (2)	150
QOP110566	Switch Mounting, Link-It To The Armrest (Opposite Side As The Hand Control) (3)	150
QOP110561	Switch Mounting, Link-It To The Headrest	200
QOP110563	Switch Mounting, Link-It To The Seat Rail (4)	150
QOP110565	Switch Mounting, Link-It To Chin Boom (5)	150
QOP110569	Omit Switch Mounting (6)	200

Switch Mounting Location

QOP110572	Switch Mounting Location, Right	0
QOP110571	Switch Mounting Location, Left	0

Satellite Switches (7)

QOP110537	Satellite Switch – Black	150
QOP110538	Satellite Switch – Green	150
QOP110539	Satellite Switch – Red	150

Multi-Function Switches (8)

QOP110550	Mini 2 Button (Stereo Plug) (9)	275
QOP110551	Mini 2 Button (Dual Mono Plug) (9)	275
QOP110552	Mini 4 Button InLine (DB9 Connector) (9)	460
QOP110554	4-Way Toggle Switched Joystick	460

Accessories

QOP110580	Mono Extension Cable (3.5 mm Jack Socket) (2 m)	100
QOP110581	Stereo Extension Cable (3.5 mm Jack Socket) (2 m)	130
QOP110582	Extension Cable DB9 (1 m)	120
QOP110583	Y-Cable, 2 Female Mono To 1 Male Stereo	150

Safety Devices

£

QOP090147	Remote Stop Switch (30 m Activation Range, Fit Via OBC Port) (10)	700
-----------	---	-----

(1) Select 1 Or 2 Switches And Mounting Positions Accordingly. Single Function For Special Input Devices

(2) Not With HD Allround Joystick Or Space Disk Mount

(3) Armrest Rail Mount

(4) Knee, If 2 Switches Selected Only Left And Right Mount

(5) No Left / Right Switch Selection Required

(6) Switches Attached Lose

(7) Only For Allround Joystick, Maximum 2 Selectable

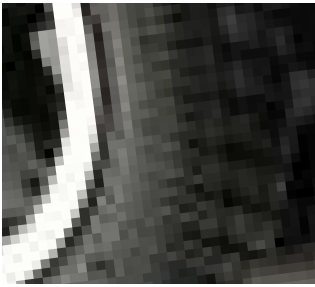
(8) Used In Combination With Assignable Button Programming

(9) Attached Lose, When Ordered. No Link-It Fixation Possible

(10) Not With VR2

Drive Wheels & Castor Wheels & Mudguards & Kerb Climber

◀ **BACK**



// QOP070069



// QOP080213



// QOP010007



// QOP010008



// QOP90038

LED Lights & Chargers

◀ **BACK**



// QOP110209



// QOP110209



// QOP160101



// QOP160104

SEDEO PRO Back Cushions & Interfaces

◀ **BACK**



// QOP030109



// QOP030113



// QOP030114



// QOP030115



// QOP030116



// QOP030117

Headrest Pads & Headrest Mounts

◀ BACK



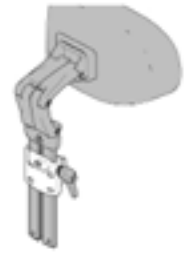
// QOP030430 & QOP030431



// WHT030401-WH030403



// WHT030404-WHT030406



// QOP030433



// WHT030408



// WHT030409

SEDEO Seat Cushions

◀ BACK



// QOP020073



// QOP020075



// QOP020076



// QOP020078

JAY Seat Cushions

◀ **BACK**



// JAY020005



// JAY020003



// JAY020006



// JAY020010



// JAY020011



// JAY020018



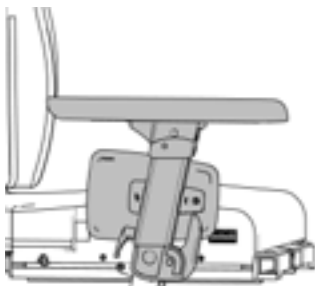
// JAY020019



// JAY020020

Armrest Types & Arm Pads

◀ **BACK**



// QOP040019



// QOP040021



// QOP040123



// QPP040204



// QOP040027



// QOP040023

Power Centre Mount Legrest & Centre Mount Legrest

◀ **BACK**



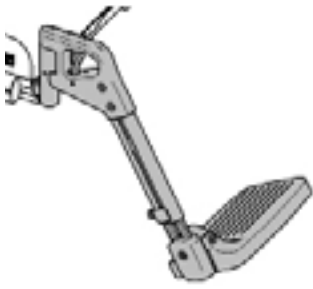
// QOP050076 & QOP050071



// QOP050086

SEDEO PRO Swing Away Legrest & Support Options

◀ **BACK**



// QOP050015



// QOP050016



// QOP050082

Remote Joystick– R-Net & Joystick Mounting

◀ **BACK**



// QOP110017



// QOP110013



// QOP110018



// QOP110056

Remote Joystick – VR2

◀ **BACK**



// QOP110036



// QOP110037

Joystick Knobs

◀ **BACK**



// QOP090505



// QOP090045



// QOP090507



// QOP090508



// QOP090509



// QOP090512



// QOP090511



// QOP090506

Electronic Programmers – VR2

◀ BACK



// QOP090063

Electronic Programmers – R-Net

◀ BACK



// QOP090066



// QOP090064

Power Modules – R-Net & Seating / Lighting Module Control – R-Net

◀ BACK



// QOP110004

Attendant Controls

◀ BACK



// QOP110021

#1 Ctrl+5- Switch Box Options & OMNI Input Control Module – R-Net

◀ BACK



// QOP110175



// QOP110176



// QOP090068



// QOP110101

Head Control

◀ **BACK**



// QOP110401 - QOP110406



// QOP110370 // QOP110371

Chin Control & Hand Control

◀ **BACK**



// QOP110470 // QOP110301



// QOP110471 // QOP110302



// QOP110472 // QOP110473 //
QOP110304 // QOP110305



// QOP110306 - QOP110309
// QOP110474 - QOP110477



// QOP110475 // QOP110477
// QOP110307 // QOP110310

Table Top Controls

◀ **BACK**



// QOP110143

Switches

◀ BACK



// QOP110521



// QOP110523



// QOP110524



// QOP110526 - QOP110530



// QOP110537 - QPP110539



// QOP110534 - QOP110536



// QOP110551



// QOP110552

Switch Mounting

◀ BACK



// QOP110526 // QOP110566



// QOP110566 // QOP110526
// QOP110529



// QOP110560 // QOP110572
// QOP110013 // QOP110056
// QOP110529 // QOP110526



// QOP110563

Hand Control Mounting

◀ **BACK**



// QOP110353 // QOP110302
// QOP110362



// QOP110353 // QOP110302
// QOP110362 // QOP110342



// QOP110302



// QOP110353 // QOP110361
// QOP110524 // QOP110526
// QOP110560



// QOP110353 // QOP110306
// QOP110362 // QOP110538
// QOP110539

Chin Control Mounting

◀ **BACK**



// QOP110480 // QOP110481
// QOP110470 // QOP110471



// QOP110483 // QOP110484



// QOP110483 // QOP110484



// QOP110485 // QOP110486



// QOP110485 // QOP110474



// QOP110487 // QOP110471
// QOP110526 // QOP110529
// QOP110561 // QOP110572
// QOP110571



// QOP110487 // QOP110474

Comments For Customisations



Q500 M/F/R with SEDEO PRO

£

Base Price	
Total Of Additional Equipment	
Packaging And Transport	
Exclusive VAT	
VAT	
Total Price	

Date

Signature

Day Month Year

**Sunrise Medical**

Thorns Road, Brierley Hill, West Midland
DY5 2LD

Phone: +44 (0) 845 605 66 88

Fax: +44 (0) 845 605 66 89

E-Mail: enquiries@sunmed.co.ukwww.SunriseMedical.co.uk