

JOURNEY THROUGH *the*
CREATION MUSEUM



MB
Master
Books®

A Division of New Leaf Publishing Group



Introduction	4
1 Exterior and Grounds.....	6
2 Dragon Legends	10
3 Main Hall	13
4 Stargazer's Planetarium.....	17
5 Johnson Observatory	19
6 Special Effects Theater	20
7 Main Exhibits.....	22
8 Dig Site.....	23
9 Starting Points	27
10 Lucy	30
11 Biblical Authority	32
12 Gutenberg Press Exhibit	34
13 Scopes Trial Exhibit.....	35
14 Graffiti Alley.....	36
15 Culture in Crises	37
16 Six Days Theater	38
17 Wonders Room	39
18 Creation.....	40
19 Adam Names the Animals	42
20 The Creation of Eve	44
21 The Tale of Two Trees	45
22 Corruption.....	46
23 Cave of Sorrows	47
24 Corruption Valley	48
25 Methuselah.....	49
26 Building of the Ark.....	50
27 The Voyage Room.....	53
28 Flood Geology	56
29 Allosaurus Ebenezer.....	59
30 Animal Dispersion/Ice Age.....	60
31 Babel.....	62
32 Christ.....	64
33 Cross.....	66
34 Consummation.....	67
35 Palm Plaza	68
36 Dino Den.....	69
37 Museum of the Bible	72
38 Dr. Crawley's Insectorium	74
39 Legacy Hall.....	78
40 Gardens	80
41 Christmas Town.....	84
42 Eden Zoo	87
43 Zip Lines.....	90
44 Dragon Hall Bookstore.....	93
45 Noah's Cafe	94

Introduction

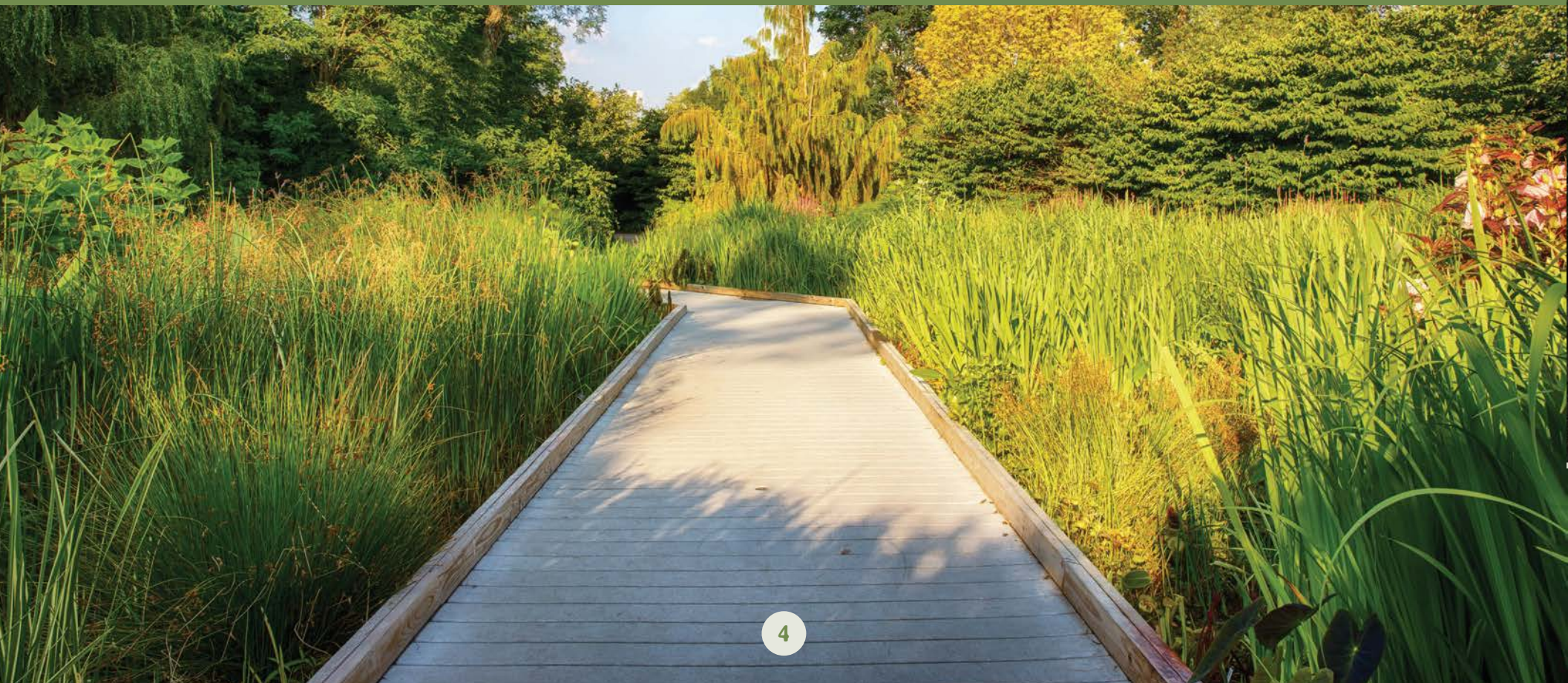
As people visit the Answers in Genesis (AiG) Creation Museum, I am overwhelmed by the positive responses. I often hear many say, “This really exceeded our expectations.”

However, this is not just AiG’s museum — it is your museum. God’s people from every walk of life and all ages contributed to this place either financially, through prayer and volunteer help, or in a myriad of other ways. What happened here at the Creation Museum is a “God thing.” We often said it was a “God-sized project.” It is a miracle of existence.

AiG certainly organized the construction and exhibit design, but this place is for everyone. It is for you to use so that Christians will be equipped and non-Christians challenged concerning the truth of God’s Word and the gospel of Jesus Christ.

As you look through these pages, please don’t marvel at what people have been able to build, but marvel at what God has accomplished through His dedicated people.

— Ken Ham







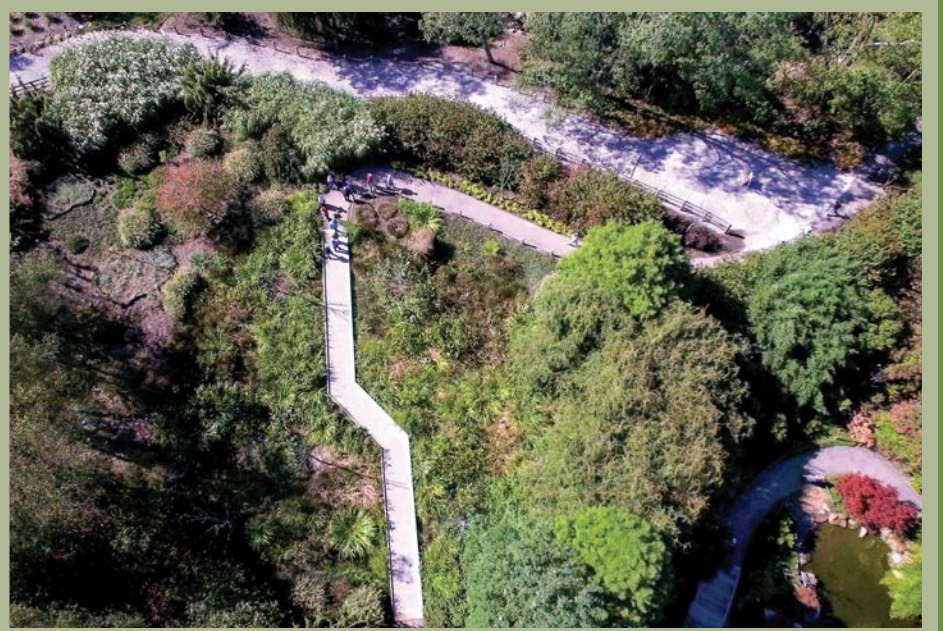
EXTERIOR and GROUNDS



Opened in 2007, the Creation Museum has welcomed more than three million guests, and attendance has skyrocketed since the opening of its sister attraction, the Ark Encounter, in 2016. Recent upgrades have been made to accommodate the increase in visitors, including a new parking lot, updated special effects theater, and wider hallways.

Located next to Interstate 275 in Petersburg, Kentucky, this state-of-the-art, 75,000-square-foot facility is dedicated to the gospel of Jesus Christ and showing that biblical history is true from the very beginning in Genesis.







Day and night, the Creation Museum property offers a wide array of stunning scenery. The attractive façade of the museum welcomes guests to this unique place filled with world-class exhibits.

Surrounded by exotic vegetation throughout much of the year, a three-acre pond occupies the center of the property. A mile of walking trails wind through lush botanical gardens filled with a wide variety of plants from around the globe. Over half a dozen distinctive bridges and several waterfalls highlight the paths that circle the pond and also lead to the Eden Zoo and petting zoo area, camel rides, koi pond, picnic pavilions, and mining sluice.

Decks overlooking the water give visitors the opportunity to relish the beautiful setting while they enjoy a delicious meal and watch thrill-seekers soaring above them on the zip lines.

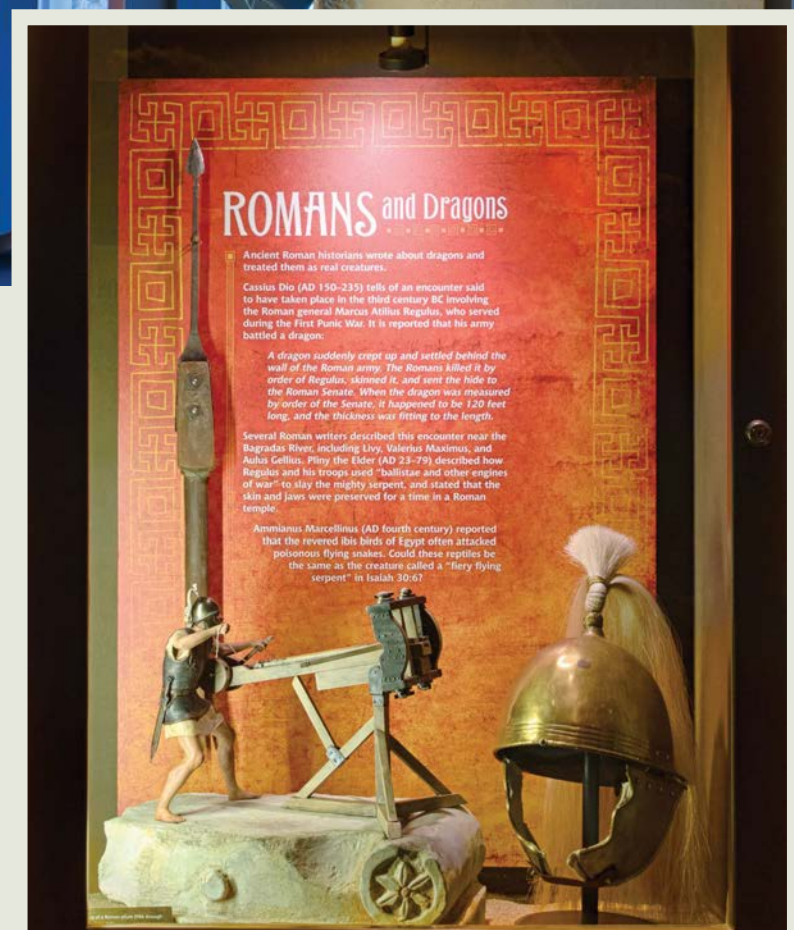






Dragon Legends

Since 2012, Creation Museum guests are immediately introduced to the Dragon Legends exhibit when they enter the building. This colorful display, full of beautiful artwork and replicas of various artifacts, highlights a collection of dragon legends found around the globe. Guests learn about fascinating stories of dragons and dragonslayers like St. George and Beowulf. Tales of these renowned creatures have been found among ancient cultures on every continent except Antarctica.





Are these legends, drawings, and artifacts mere myths, or could some of them be based on real historical creatures? Many of the beasts in these tales, drawings, and carvings sound and look very similar to dinosaurs and associated creatures.

Might some of these dragon legends be ancient stories from people who saw and, at times, fought against creatures we now call dinosaurs?



Unearthed in Newark, Ohio in 1989, the Burning Tree Mastodon is one of the largest and most complete mastodon skeletons ever discovered. A cast of this impressive specimen greets visitors as they enter the main hall.

Main Hall

From the first steps into the Creation Museum, it is clear this will be a remarkable experience. When visitors walk into the main hall, they are amazed by the animatronic dinosaurs and children, the waterfall, the towering trees, and the large aquarium.

The main hall serves as a hub to the Dragon Hall Bookstore, the planetarium (called the Stargazer's Room), the Special Effects Theater, Noah's Café, and the entrance to the main exhibits.







A variety of dinosaurs can be spotted in the main hall. A colorful *Dilophosaurus* and massive, 40-foot long, animatronic sauropod overlook the vast space. Two juvenile tyrannosaurs look around near a couple of children, reminding visitors that, according to the Bible, man and dinosaur lived at the same time and these marvelous creatures were originally created as vegetarians (Genesis 1:30). A flying reptile, known as a *Pteranodon*, sits on a nest as it watches guests enter the Dragon Hall Bookstore.

Visitors often satisfy their caffeine fix with a coffee or tea from Noah's Coffee while they "prepare to believe" as they tour the expansive Creation Museum.





In a hallway that wraps around the Special Effects Theater, a wide variety of unique fossils and spectacular minerals can be viewed. Consider conclusive evidence that fossilization occurs as a result of catastrophic processes as you observe a fossil of one fish eating another or the final steps of a horseshoe crab.



In another display, learn from former human anatomy professor Dr. David Menton as he discusses the vast differences between human and ape anatomy.

In the large "Treasures of the Earth" display case, guests can see and study the beauty and order found among some of our planet's mineral crystals.

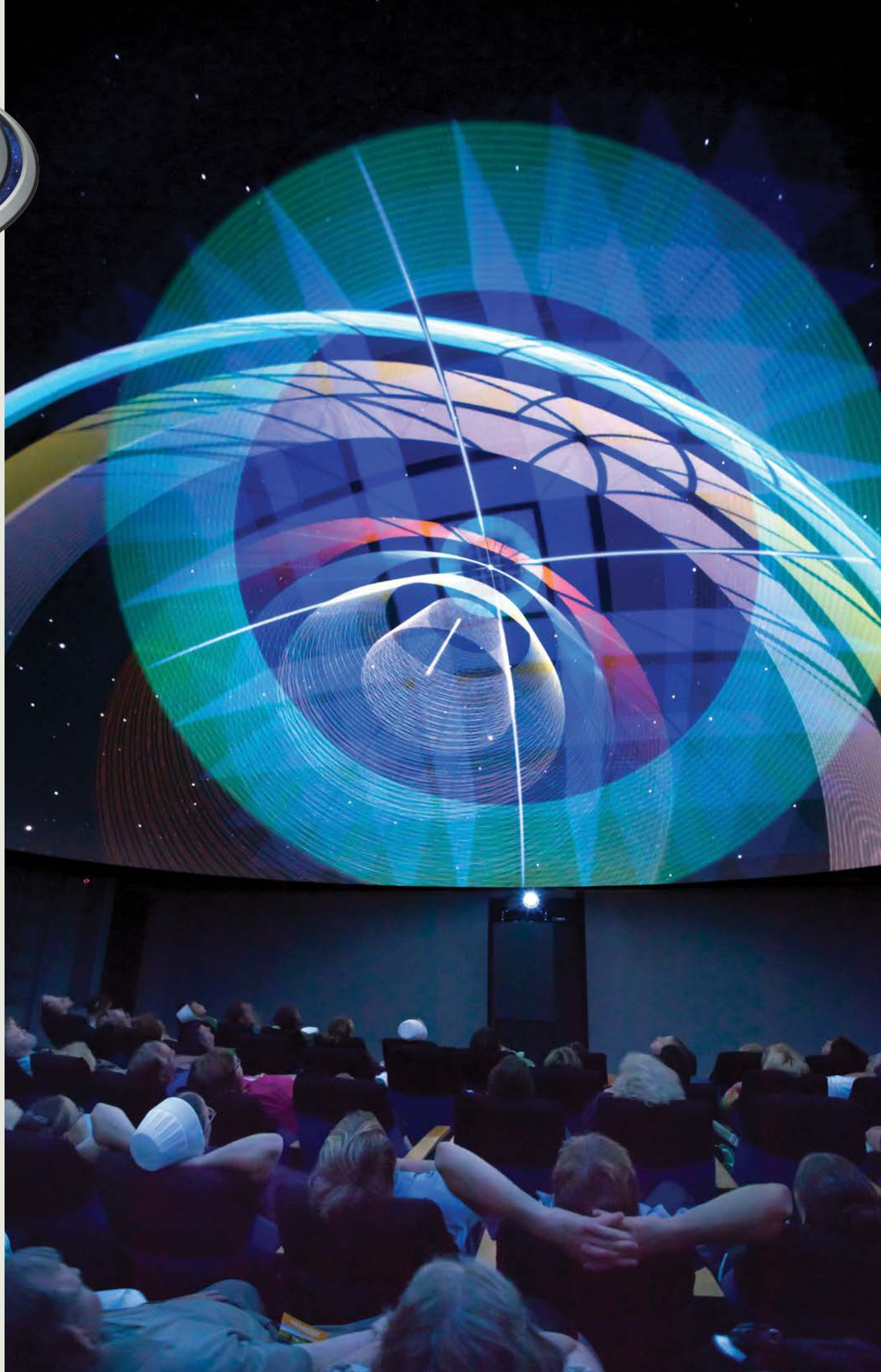




The Stargazer's Room features a Digistar D5 digital projection system — providing a full color, high-resolution, awe-inspiring environment.

Sit back and be amazed as the projector displays vividly realistic cosmic images upon a 30-foot diameter hemispherical dome, allowing viewers to virtually travel the universe. In the premier presentation, *The Created Cosmos*, visitors get to experience the incredible size of God's creation in an unforgettable journey.

The program takes us from the earth, to Orion's Belt, past several extrasolar planets, into a globular star cluster, and then beyond the Milky Way to the extreme limit of the known universe. Viewers get a small taste of God's power as they experience the size of the universe in a way never before possible.





The breathtaking program for the planetarium shows guests the great vastness and amazing design of God's creation. Most importantly, the Stargazer's Room honors God in a way that very few planetariums do — by acknowledging the authority of His Word beginning

with Genesis. Like all the programs at the Creation Museum, the planetarium is firmly based on the Bible and presents powerful information that challenges secular thinking. The Stargazer's Room affirms that the heavens declare the glory of God (Psalm 19:1).



Johnson Observatory

Have you ever looked up at a clear night sky, marveled at all the stars, and then wondered which ones you were seeing? Would you like to view the rings of Saturn or the moons of Jupiter? Are you intrigued by the idea of seeing a galaxy or nebula? If you answered yes to any — or all — of these questions, then Stargazer's Nights led by astronomer Dr. Danny Faulkner are for you.

The observatory can be reached via a short walk along the edge of the pond and features a retractable roof and houses two 12-inch reflecting telescopes, as well as several other smaller telescopes. Guests are treated to amazing views of sun spots during the day and spectacular glimpses into the details of God's handiwork in planets, nebulae, and stars by night.

