



Geelong Mums



St Kilda Mums



Eureka Mums

---

# A GUIDE TO

---

# DONATING TO ST KILDA MUMS





Geelong Mums



St Kilda Mums



Eureka Mums

---

# WHY DONATE YOUR ITEMS?

---



## THERE ARE BABIES & CHILDREN THAT NEED YOUR HELP

St Kilda Mums Inc. (St Kilda Mums, Geelong Mums, and Eureka Mums) re-home essential nursery items to babies and children in need across Victoria. We receive hundreds of requests a week, and can only meet those needs with your support.



## WASTE LESS

We aim to reduce waste by giving your used items a second life in a home that needs them. Help us invest in a circular economy by diverting your good quality items from landfill.

---

## OUR FOCUS

---

### SAFETY & DIGNITY

Safety and dignity are front-of-mind when we request donations. We want families to feel as though they are receiving something brand new. We present your donated items as a gift, carefully packaged with love by one of our volunteers. All donations must maintain this quality, as well as meet our safety standards. Please consider carefully if your item is right for us before donating.





Geelong Mums



St Kilda Mums



Eureka Mums

# WHAT WE ACCEPT

## HIGH PRIORITY ITEMS

Cots, prams, and newborn car seats

## ALL ITEMS WE ACCEPT

### TRANSPORT

Baby carriers  
Car seats  
Prams  
Strollers

### FOOD & FEEDING

Bibs  
Feeding equipment  
Formula  
Highchairs  
Breastfeeding pillows  
Manual breast pumps  
Microwave sterilisers

### HYGIENE AND CARE

Baby baths  
Change mats  
Folding change tables  
Maternity pads  
Nappies  
Nappy bags  
Nursing pads  
Toiletry bags  
Toiletries  
Wipes

### SLEEPING

Bassinets  
Cots  
Portacots  
Toddler beds  
Baby sleeping bags  
Linen

### PLAY & LEARN

Bouncers & Rockers  
Books for children  
Arts & Crafts  
Toys & Games  
Activity mats

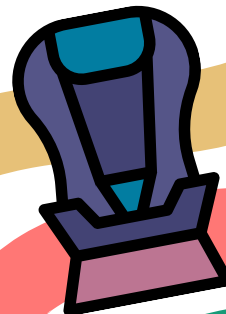
### SAFETY

Playpens  
Safety gates  
Safety items

### CLOTHES & SHOES

Clothes (00000-16)  
Shoes (00000 -16)

All items must be in excellent, clean condition and sorted before donating



For more details about specific requirements, visit our website [stkildamums.org](http://stkildamums.org)



Geelong Mums



St Kilda Mums



Eureka Mums

---

# ST KILDA MUMS IS ALWAYS IN NEED OF:

---

## BABY TOILETRIES (FULL SIZE)

Nappy cream, baby shampoo, baby moisturiser, etc.

## FAMILY TOILETRIES (FULL SIZE)

Toothpaste, shampoo/conditioner, body wash, deodorant, etc.

## MICROWAVE STERILISERS

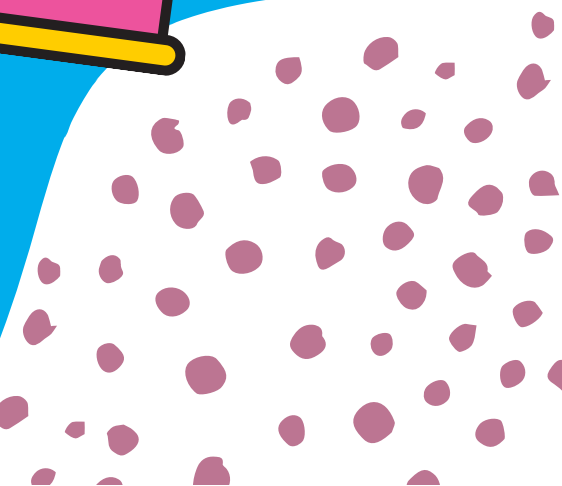
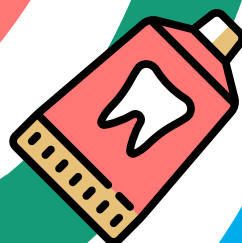
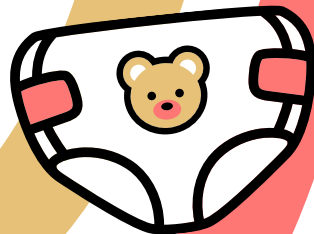
## UNDERWEAR & SOCKS

Children sizes 2 - 16

## NAPPIES

All sizes

## BABY WIPES





Geelong Mums



St Kilda Mums



Eureka Mums

---

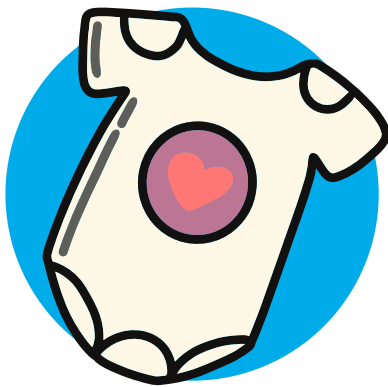
# CLOTHES & SHOES

---

Ask yourself: would I gift this item to my friend's child?

We prioritise safety and dignity, and will only re-home items in excellent condition.

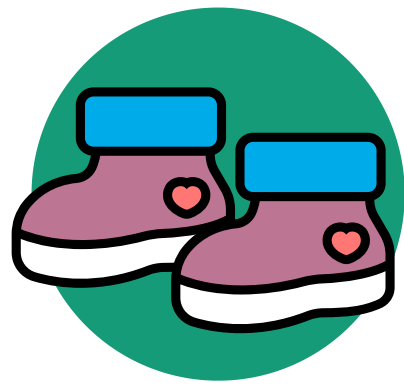
Please ensure your donation meets the following requirements before you donate:



## CLOTHES

Babies and children clothing in excellent, clean condition:

- Sizes from birth 00000 to size 16 youth/teen - no hoods on any clothing up to size 1
- Pyjamas and sleepwear
- Gro-bags and sleeping bags for babies
- Underwear and socks in new or near-new condition
- Hand knitted or crocheted clothing, beanies, booties and scarves
- Please pack clothing into bags with the size and gender clearly labelled to help us sort stock as quickly as possible.



## SHOES

Children's shoes, from baby to youth size 7

- Please clean/wash them before donating, we ask them to be in excellent/near new condition.

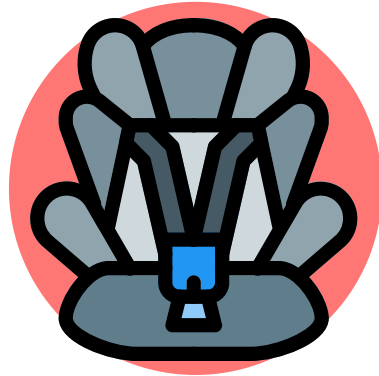
We don't rehome adult clothes, maternity clothes (including bras), uniforms or sport specific shoes like footy boots or dance shoes.

---

# TRANSPORT

---

Ask yourself: would I gift this item to my friend's child?  
We prioritise safety and dignity, and will only re-home items in excellent condition.  
Please ensure your donation meets our requirements before you donate.



## CAR SEATS

Capsule, reversible, toddler or booster car seats (not foam or foldable). They all need to meet the following:

- Be less than 8 years old by the month and year of manufacture (sticker can be located on the base/side usually)
- Have a red sticker displaying the standard **AS/NZS 1754**
- **NOT** have been in an accident (however minor) or come from hard rubbish



## BABY CARRIERS

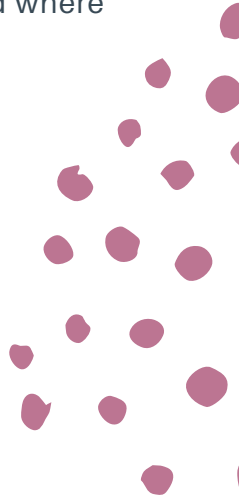
Baby carriers worn on the front of the body with the baby in an upright position. Please ensure they have working buckles and no fraying. Instructions should be included where possible.



## PRAMS & STROLLERS

- Excellent, clean condition (no mould or rust)
- A 5-point harness
- A fully reclining back so a baby can lie flat
- Working brakes
- Carry basket underneath
- Sunhood

We also always need pram accessories like foot muffs, snugglers, sunshades and rain covers for single and double prams and strollers. We can only re-home a pram bassinet if it is donated with the matching pram.





Geelong Mums



St Kilda Mums



Eureka Mums

---

# SAFETY

---

Ask yourself: would I gift this item to my friend's child?  
We prioritise safety and dignity, and will only re-home items in excellent condition.  
Please ensure your donation meets our requirements before you donate.



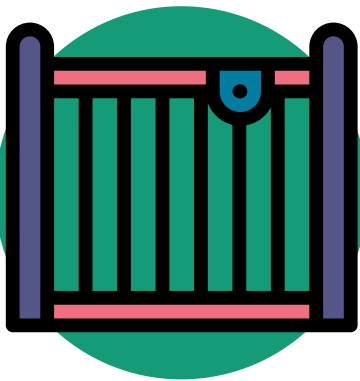
## PLAYPENS

Wooden, metal and plastic playpens.



## SAFETY ITEMS

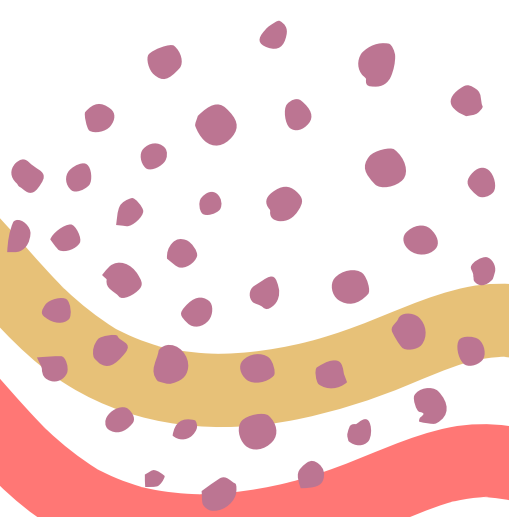
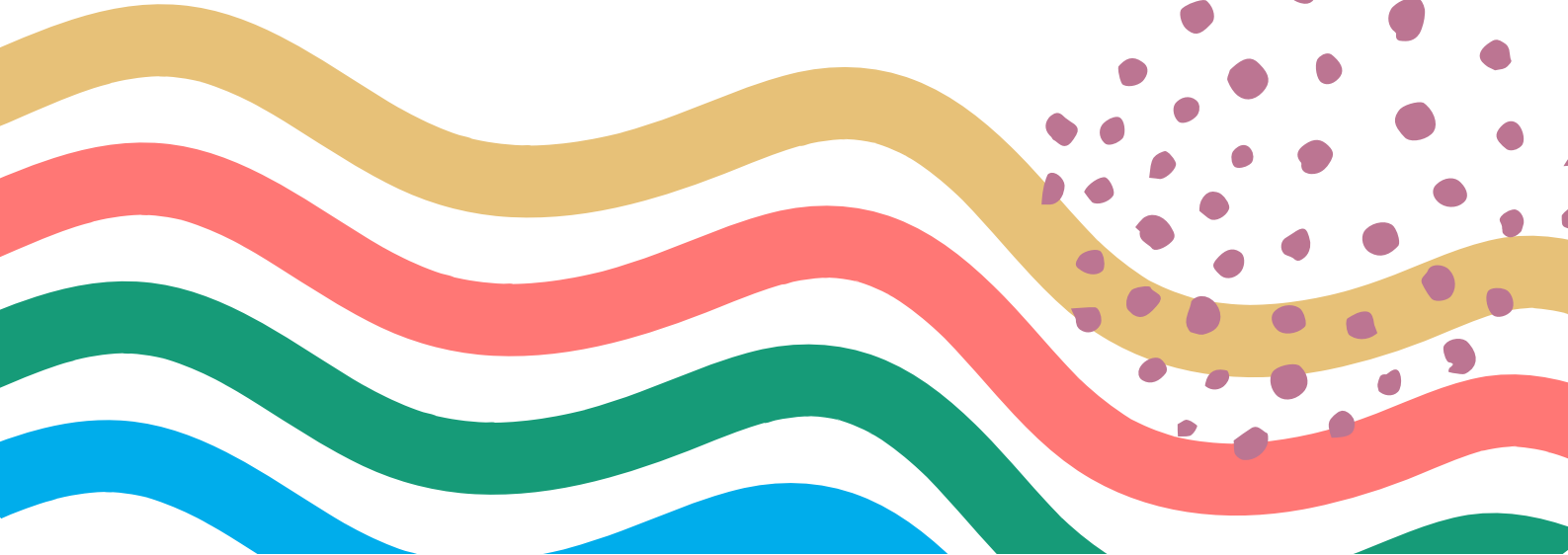
Cupboard and drawer locks, power point covers, etc.



## SAFETY GATES

Pressure mounted safety gates (not hardware mounted/screw into walls).

Please include adjuster screws and bolts, suction cups for mounting on the wall, any extension bolts etc in a clear plastic zip lock bag, taped to the gate.





Geelong Mums



St Kilda Mums



Eureka Mums

---

# FOOD & FEEDING

---

Ask yourself: would I gift this item to my friend's child?  
We prioritise safety and dignity, and will only re-home items in excellent condition.  
Please ensure your donation meets our requirements before you donate.



## BIBS

Bibs with domes/press studs. We don't re-home bibs with ties.



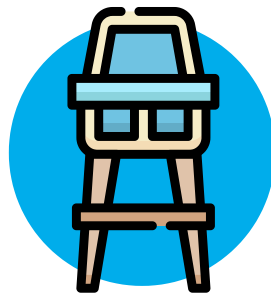
## BOTTLES & FEEDING EQUIPMENT

Bottles (plastic only), teats, children's plates, bowls, cutlery, sippy cups, drink bottles and lunch boxes.



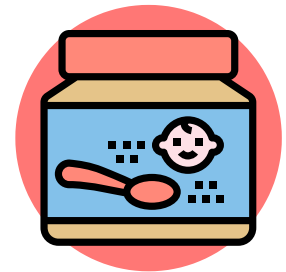
## BREAST PUMPS

Manual breast pumps only please (not electric or with batteries). Please make sure all parts are in near new condition and clean.



## HIGHCHAIRS

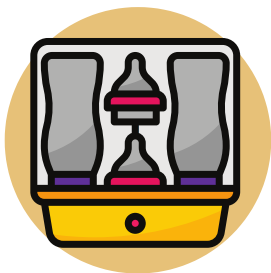
Freestanding highchairs with a safety harness and tray. Please ensure it's in good, clean condition (no mould, rust or cracked/brittle plastic) and if it has castors, please check the brakes work.



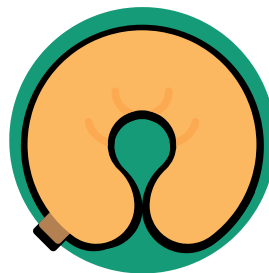
## FORMULA

Unopened tins of 'standard' stage 1 and 2 formula with at least 3 months before the expiry date.

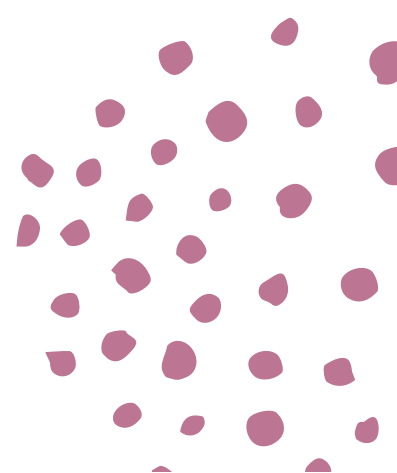
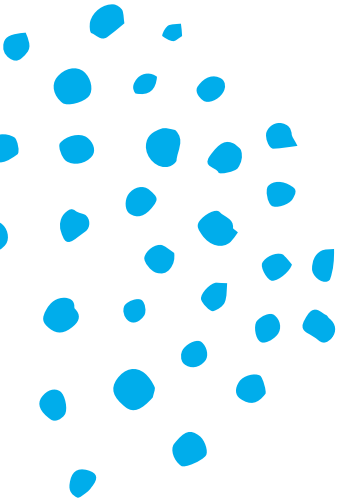
We don't re-home toddler milk (12m+), prescription or specialised formula (gluten free, allergy, soy etc), or baby food.



## MICROWAVE STERILISERS



## BREASTFEEDING PILLOWS

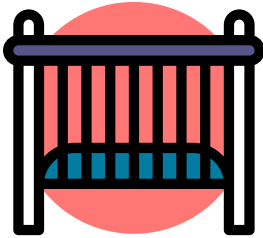






# SLEEPING

Ask yourself: would I gift this item to my friend's child?  
We prioritise safety and dignity, and will only re-home items in excellent condition.  
Please ensure your donation meets our requirements before you donate.



## COTS & COT MATTRESSES

Cots bought in Australia or New Zealand, less than 10 years old. Must have the recommended mattress dimensions printed on the base of the cot.

All cots must be disassembled with hardware in a plastic bag with the assembly manual. Please tape the bag to the base slats. If the cot has a drop side, please ensure it works well and that it's not fully plastic or with metal rods.

If you have the mattress that matches the cot, please include it if it is a firm mattress, in excellent condition.



## LINEN

Linen for bassinets, cots and single beds, including:

- Mattress protectors
- Flat and fitted sheets
- Pillowcases (standard pillow size only)
- Doona covers (Single only - no doonas)
- Towels and Facewashers
- Blankets - bassinet, cot or single bed size. No weighted blankets
- Hand knits - our recommended sizing for single bed blankets is approximately 120cm x 180cm, cot blankets are 120cm x 150cm and for bassinet blankets are 100cm x 80cm.

We do not rehome soft bedding such as pillows, quilts, duvets and bumpers.

## PORTACOTS

Portable or folding cots that meet the mandatory Australian Standard AS/NZS2195 for portable cots.

All four sides must be made of mesh that goes to the base of the portacot. It must also come with the original mattress, travel bag and the mechanics must be faultless.

The portacot must be as new, in excellent clean condition with no damage to the mesh.



## TODDLER BEDS

Toddler beds from cot conversions, as well as small kids beds (no single beds, trundle beds, nesting beds, loft beds or bunk beds). If you have the mattress for the toddler bed, please include it if it's in excellent condition. Please disassemble the bed, place the hardware and assembly manual in a plastic bag taped to the base.



## BASSINETS

Bassinets with a wide stable base and firm sides (at least 400mm high) made of breathable panels. If it has a firm (no more than 75mm high), snug fitting and clean mattress, please include it with the bassinet.



## GRO BAGS, BABY SLEEPING BAGS, & WRAPS

Gro-bags or infant sleeping bags with holes for arms or sleeves, and no hoods. Bunny rugs and baby wraps. We can rehome swaddles if they are donated in the original packaging or with the instructions for safe use.



Geelong Mums



St Kilda Mums



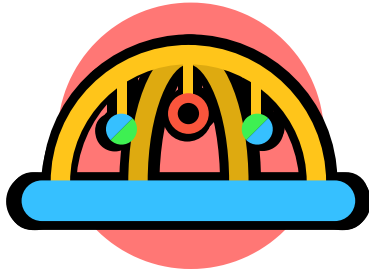
Eureka Mums

---

# PLAY & LEARN

---

Ask yourself: would I gift this item to my friend's child?  
We prioritise safety and dignity, and will only re-home items in excellent condition.  
Please ensure your donation meets our requirements before you donate.



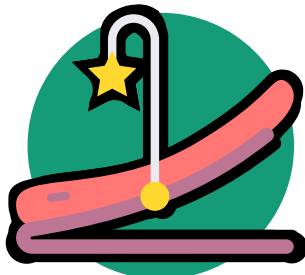
## ACTIVITY MATS

Fabric activity mats and play gyms.



## ARTS & CRAFTS

Pencils, textas, scrap books, exercise books, rulers, erasers, unused colouring and activity books. Art and craft items that are unused and in excellent condition.



## BOUNCERS & ROCKERS

Bouncers and rockers, including battery operated ones, if they are less than ten years old with a three or five point safety harness. We are unable to rehome large mains powered swings.



## CHILDREN'S BOOKS

Suitable for children up to the age of 16 years, including unused colouring and activity books.



## TOYS & GAMES

- Toys that are smaller than 30cm in size - as the families we support do not have the space to hold large toys
- Games - please make sure they have all their parts stored together
- Puzzles - please make sure they have all their parts stored together
- Building blocks
- Knitted toys (no beans, no hard eyes/noses, no ties)
- Small, brand new soft toys (no beans, no hard eyes/noses, no batteries)
- All are in excellent, clean condition

Please ensure that none of the toys donated have batteries, as we do not rehome battery operated toys.



Geelong Mums



St Kilda Mums



Eureka Mums

# HYGIENE & CARE

Ask yourself: would I gift this item to my friend's child?  
We prioritise safety and dignity, and will only re-home items in excellent condition.  
Please ensure your donation meets our requirements before you donate.



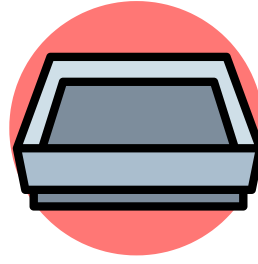
## WIPES

New or unopened packets.



## MATERNITY PADS

Unopened packs or loose if individually wrapped.



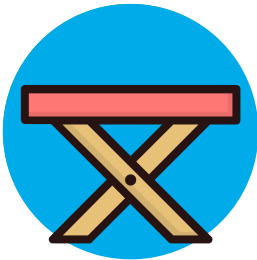
## CHANGE MATS

Foam or vinyl covered change mats only, clean & in excellent condition.



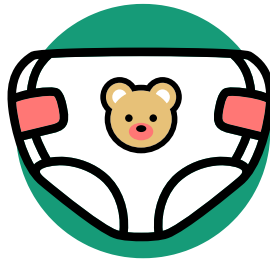
## NURSING PADS

Unopened packs or loose if individually wrapped.



## FOLDING CHANGE TABLES

Change table that folds and has sides more than 10cm higher than the level of the foam mat. Preferably it also has a safety strap that does up over the baby's tummy.



## NAPPIES

Disposable nappies in all sizes that are loose or in packets.

We also re-home as-new, modern, cloth nappies in all styles and sizes, clean and without stains.



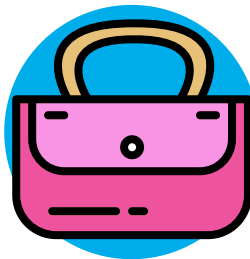
## BABY BATHS

Baths that are clean and have a plug (if required). No bath stands or seats please.



## TOILETRIES

Toiletries for babies, children and adults that are new or unopened and with at least 3 months before expiry. Examples include nappy cream, shampoo, toothbrushes, toothpaste, soap, deodorant, tampons, sanitary pads etc.



## TOILETRY BAGS

Clean, as new toiletry bags.



## NAPPY BAGS

Clean, as new nappy bags.