

Sigrist Exit Seal®

Approaching 300,000 installed on commercial roofs from coast to coast

Lifetime Limited Warranty



Won't rust or oxidize or conduct cold and heat like metal seals do!

ALTA
PRODUCTS LLC
Innovation That Works.™



- **Standard fits walls up to .75" thick**
- Create a weather-tight pipe/line seal for roof and .75" wall penetrations
- Injection molded using our proprietary high impact resins with UV inhibitor
- Durable and long lasting EPDM rubber gaskets
- 16 common pathway sizes (1/4" to 2 7/8" OD)
- Molded from high impact resin with UV inhibitor

Sigrist Exit Seals® are used to create a weather-tight pathway through vertical walls with a smooth exterior.

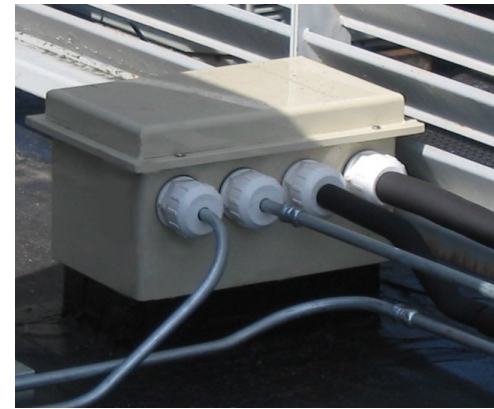
- **Galvanized or painted**
- **Maximum installable wall thicknesses:**
Standard = 3/4"

Material Properties and Temperature Ranges

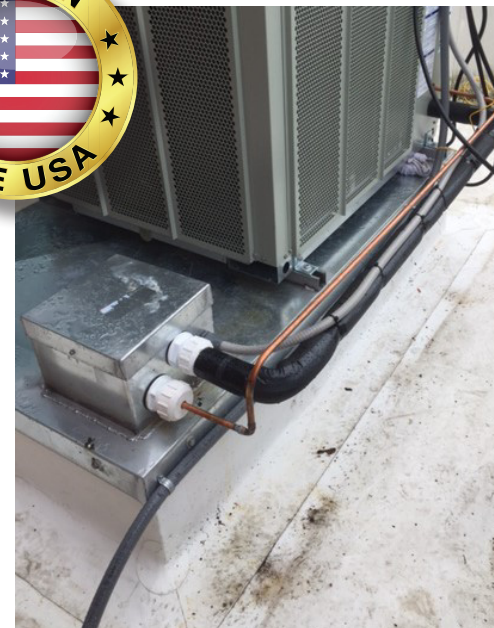
Tensile strength	6,600 PSI
Flexural strength	10,800 PSI
Exit Seal components	-22F to +176F/185F
EPDM Gaskets	-22F to +350F

Even at -22F our seals still have an impact resistance of 4.3Ft/Lbs In. The 185F high range represents no deformation of material in continual-service air temperature.

Specifications may change without notice as we constantly work to increase performance ranges.



Roof-top installation using 4 Sigrist Exit Seals® on our "Small" Sigrist Pipe Chase Housing and Curb system. Accepts up to 7 lines through one roof opening.



Our Exit Seals work just as well on your doghouses as they do on ours.

Photo courtesy of Alliant Systems, Inc.