

# Sigrist Exit Seal®

Approaching 300,000 installed on commercial roofs from coast to coast

**Lifetime Limited Warranty**



**Won't rust or oxidize or conduct cold and heat like metal seals do!**

**ALTA**  
PRODUCTS LLC  
Innovation That Works.™



- **Standard fits walls up to .75" thick**
- Create a weather-tight pipe/line seal for roof and .75" wall penetrations
- Injection molded using our proprietary high impact resins with UV inhibitor
- Durable and long lasting EPDM rubber gaskets
- 11 common pathway sizes (1/4" to 1 5/8" OD)
- Molded from high impact resin with UV inhibitor

Sigrist Exit Seals® are used to create a weather-tight pathway through vertical walls with a smooth exterior.

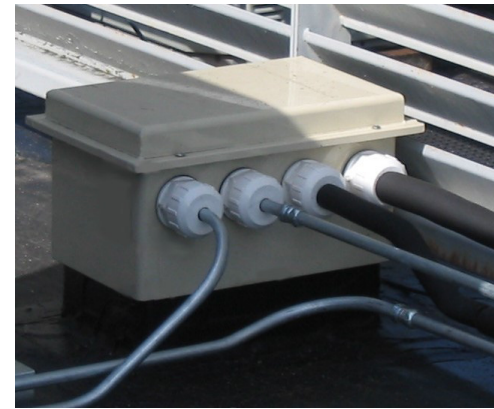
- **Galvanized or painted**
- **Maximum installable wall thicknesses:**  
**Standard = 3/4"**

## Material Properties and Temperature Ranges

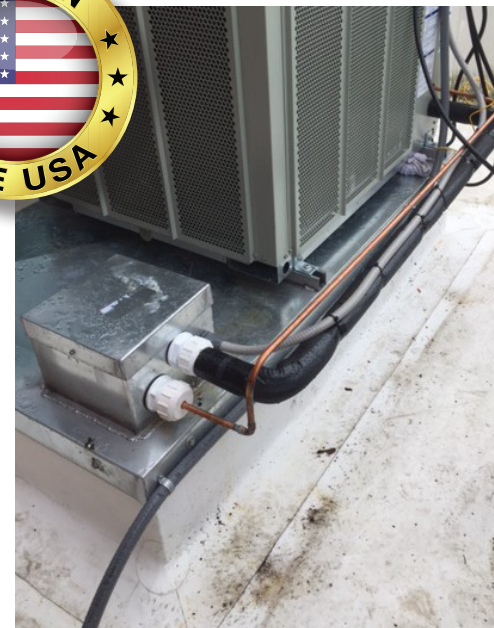
Tensile strength	6,600 PSI
Flexural strength	10,800 PSI
Exit Seal components	-22F to +176F/185F
EPDM Gaskets	-22F to +350F

Even at -22F our seals still have an impact resistance of 4.3Ft/Lbs In. The 185F high range represents no deformation of material in continual-service air temperature.

*Specifications may change without notice as we constantly work to increase performance ranges.*



*Roof-top installation using 4 Sigrist Exit Seals® on our "Small" Sigrist Pipe Chase Housing and Curb system. Accepts up to 7 lines through one roof opening.*



*Our Exit Seals work just as well on your doghouses as they do on ours.*

*Photo courtesy of Alliant Systems, Inc.*