

# SIGRIST PIPE CHASE HOUSING by ALTA Products, LLC

The *original* "Drop-in" solution for consolidating roof penetrations - 20 year warranty

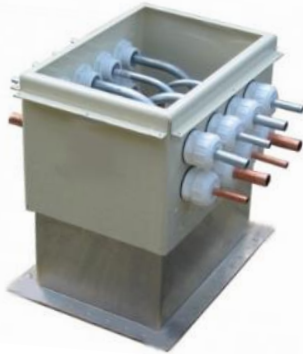


Photo above shows the size Medium Pipe Chase Housing atop a 14" tall curb with 16 Sigrist Exit Seals® installed .  
Photo to the right shows a size Small during installation.



## Features:

- .080" Thick aluminum housing and curb for sizes Small and Medium Housings and Curbs
- .125" Thick aluminum used for sizes: Medium Double-Long, Large and Data Center Housings and Curbs
- UV protected powder coated finish (2mil thick)
- Stainless steel fasteners
- **Full Thermal Break in the housing and curb and lid interior**
- Gaskets between the lid to housing and housing to curb connection points

## Five standard sizes to chose from:

**SMALL** Designed for small AC condensing units - Accommodates up to **7** Sigrist Exit Seals®  
**Housing:** 16.5" x 10" x 12.5" tall    **Curb options:** 14" tall or 18" tall

**MEDIUM** Sized to facilitate up to 4 split systems (up to **16** Sigrist Exit Seals® can be installed)  
**Housing:** 20.5" x 14.5" X 13.5" tall    **Curb options:** 14" tall, 18" tall and 24" tall

**MEDIUM Double-Long** Sized to facilitate up to 8 split systems (up to **32** Sigrist Exit Seals® can be installed)  
**Housing:** 38" x 14.5" X 13.5" tall    **Curb options:** 14" tall or 18" tall

**LARGE:** 34" x 34" x 24" tall housing    **Curb:** 14" tall - 18" tall Curb

**DATA CENTER:** 18" x 60" x 24" tall housing    **Curb:** 14" tall - 18" tall Curb



Sigrist Exit Seal®  
For walls up to .75" thick

Also shown in the above images are Sigrist Exit Seals® (ASTM E-283 Air Barrier Approved)

- Sigrist Exit Seals® are available in two lengths and 11 line/pipe sizes (1/4" up to 1 5/8") for walls up to 8.5" thick
- Injection molded ABS resin that is impact resistant and UV protected
- Manufactured in the United States
- Limited Lifetime Warranty

