



**CASTELLI**

SERVIZIO CORSE  
TRIATHLON  
**2021**



PRODUCT OVERVIEW / 8  
MEN'S LONG DISTANCE / 10  
MEN'S SHORT DISTANCE / 22  
MEN'S RUN & TRAINING / 30  
WOMEN'S LONG DISTANCE / 38  
WOMEN'S SHORT DISTANCE / 48  
WOMEN'S RUN & TRAINING / 56  
KIDS / 62  
ACCESSORIES / 64  
HOW IT WORKS / 66  
SIZE CHARTS / 67  
FABRICS AND PAD / 69

PHOTOGRAPHERS

Edoardo Civiero, Fabio Dell'Oglio,  
Getty Images, Marcel Hilger, James Mitchell,  
Michael Rauschendorfer, Activ'Images.



# DEVELOPED AND TESTED WITH THE PROS



Castelli is dedicated to making the fastest clothing in the world. We know that race results come through relentless attention to the smallest of details. So we approach every garment questioning how we can make it faster.

We do the basic research, then we test the concepts internally, then we test them with professional athletes and in the wind tunnel.

Right from the start of our triathlon activities we partnered with professional athletes. Together with them we are continuously improving and innovating our triathlon range to make sure that our athletes have the best and fastest equipment for their races.

With Castelli Servizio Corse you can have the exact same pieces as the professional athletes. Not less—expensive replicas, but the exact same pieces made using the same fabrics, and components, with the same fit and finish, by the same people who produce the pieces you see on the pros racing around the world.

---



**AVAILABLE  
FOR YOUR  
TEAM**

---

# MEN'S

## LONG DISTANCE



(FP)  
ALSO AVAILABLE  
FULLY PRINTED

(NS)  
ALSO AVAILABLE  
NO SILICONE

# WOMEN'S

## LONG DISTANCE



(FP)  
ALSO AVAILABLE  
FULLY PRINTED

(NS)  
ALSO AVAILABLE  
NO SILICONE

## SHORT DISTANCE

## RUN & TRAINING

## KID



# MEN'S LONG DISTANCE





IMAGE: PR SPEED SUIT 4300463

**ROSSO CORSA**

**PR SPEED SUIT 4300463**

SIZE: <b>XXS-3XL</b>	<b>DISTANCE</b>
WEIGHT: <b>251 g</b> (Large)	LONG
	HALF
<b>KISS TRI</b>	OLYMPIC
	SPRINT

**DISCIPLINE**

- Pro-level long-distance race suit to deliver real aero benefits on the bike while providing comfort and cooling on the run
- 50-denier upper-body fabric is the thinnest, smoothest fabric for light weight and maximum aerodynamics
- Active cooling for the run with moisture evaporating directly next to the skin
- Silicone speed ribs on the sleeves induce turbulence to reduce drag on one of the most exposed parts of the body
- Elbow-length sleeves and knee-length legs for maximum aerodynamics
- Support short portion to keep everything in place on the run
- 2 rear pockets for ample nutrition storage
- KISS Tri pad



ALSO AVAILABLE  
**PR SPEED SUIT NO SILICONE**  
4300464



IMAGE: FREE SANREMO 2 SUIT SHORT SLEEVE 4300474

ROSSO CORSA

FREE SANREMO 2 SUIT SHORT SLEEVE 4300474

SIZES: <b>XXS-3XL</b>	DISTANCE
WEIGHT: <b>218 g</b> (Large)	LONG
	HALF
<b>KISS TRI</b>	OLYMPIC
	SPRINT

TRIATHLON DISCIPLINES

Second-generation Sanremo short sleeve suit is faster than ever Velocity Rev2 main body fabric delivers aerodynamics with excellent fit and moisture management

Back fabric is our Velocity mesh for breathability, yet it blocks 94% of UV rays for significant sun protection (UPF 16)

Elbow-length sleeves with raw-cut edges for maximum comfort and aerodynamics

Castelli's Sanremo front opening makes it easier to bend for cycling and straighten out for the run and swim, while also allowing for easier nature breaks or opening up for extra-hot runs

2 rear pockets lie flat in the swim but allow generous room for nutrition

New short construction fits more securely with more muscle support

GIRO<sup>®</sup> flat leg grippers on longer legs for maximum aerodynamics

KISS Tri seat pad that provides comfort on the bike and that you almost don't feel during the run



ALSO AVAILABLE

**FREE SANREMO 2 SUIT SHORT SLEEVE FULLY PRINTED**  
4300475



16 FREE SPEED 2 RACE TOP 4300465

LONG DISTANCE

SIZES: <b>XXS-3XL</b>	<b>DISTANCE</b>
WEIGHT: <b>110 g</b> (Large)	LONG
	HALF
	OLYMPIC
	SPRINT

TRIATHLON DISCIPLINES   

- Freedom of movement in the water, aerodynamics on the bike, comfort on the run
- Velocity Rev2 aero fabric on front-facing surfaces
- UPF 16 Velocity mesh back blocks 94% of UV light with generous breathability
- 2 rear pockets lie flat and prevent nutrition from bouncing around
- Giro<sup>3</sup> flat gripper elastic lies flat on lower back
- SnapLock fastener at lower back to clip to Free Tri Short to prevent riding up during swim or bike leg
- YKK<sup>®</sup> Camlock<sup>®</sup> zipper
- Elbow-length sleeves for maximum aerodynamics



LONG DISTANCE



18 FREE TRI TOP 4300211

SIZES: XXS-3XL	DISTANCE
WEIGHT: 58g (Large)	LONG
	HALF
	OLYMPIC
	SPRINT

TRIATHLON DISCIPLINES   

- SpeedFreak ventilated race fabric on front
- Velocity Mesh back gives wind-tunnel-proven speed on the bike
- SnapLock fastener at lower back to clip to Free Tri Short to prevent riding up during swim or bike leg
- YKK® Camlock® zipper
- FreeAero 2 hydro- and aero-optimized pockets
- Soft-finish armholes to reduce chafing






SNAPLOCK FASTENER  
TO CLIP TO FREE TRI SHORT



ROSSO CORSA

FREE TRI SHORT 4300212

SIZES: <b>XXS-3XL</b>	<b>DISTANCE</b>
WEIGHT: <b>85g (Large)</b>	LONG
	HALF
<b>KISS TRI</b>	OLYMPIC
	SPRINT

TRIATHLON DISCIPLINES   

- Instadry Speed fabric is fast in the swim with minimal water absorption
- Free construction for great anatomic fit
- KISS Tri seat pad is comfortable on the bike and virtually disappears on the run
- SnapLock fastener at waist to clip Free Speed 2 Race Top or Free Tri Top into place for swim and bike
- Flat-lock stitching
- 2 small pockets on hip for nutrition during run
- GIRO Air gripper elastic for more comfort



SNAPLOCK FASTENER TO CLIP TO FREE SPEED 2 RACE TOP OR FREE TRI TOP



ALSO AVAILABLE  
**FREE TRI SHORT FULLY PRINTED**  
4300223



IMAGE: FREE TRI SHORT FULLY PRINTED 4300223

# MEN'S SHORT DISTANCE





## ROSSO CORSA

## SD TEAM RACE SUIT 4300526

SIZES: XXS-3XL

DISTANCE

WEIGHT: 123 g (Medium)

LONG

HALF

OLYMPIC

SPRINT

## TRIATHLON DISCIPLINES



Pro level short-distance race suit for best possible swim performance

Water repellent treatment and minimum amount of seams for reduced water resistance

Combination of light fabric on the upper body and compressive fabric in the hip area and legs for muscle support

Quick drying fabrics

Rear 40cm YKK® zipper with elastic cord closing at the bottom to avoid unintentional opening during the swim

Silicone leg gripper holds suit in place

Thin fleece seat liner



A completely new approach for sprint and short distance racing to meet the needs of ITU professionals.

Developed in close collaboration with the German Triathlon Federation (DTU).



IMAGE: FREE TRI ITU SUIT FULLY PRINTED 4300225

**ROSSO CORSA**

**FREE TRI ITU SUIT 4300214**

SIZES: XXS-3XL	DISTANCE
WEIGHT: 161g (Large)	LONG
	HALF
<b>KISS TRI</b>	OLYMPIC
	SPRINT

**TRIATHLON DISCIPLINES**

- SpeedFreak ventilated race fabric on front of upper portion
- Velocity Mesh back gives wind-tunnel-proven speed on the bike
- Rear 30cm YKK® zipper
- FreeAero 2 hydro- and aero-optimized pockets
- Soft-finish armholes to reduce chafing
- Instadry Speed fabric on short is fast in the swim with minimal water absorption
- KISS Tri seat pad is comfortable on the bike and virtually disappears on the run
- 2 small pockets on hip for nutrition during run
- GIRO Air leg gripper elastic



**FOR OLYMPIC TO IRONMAN DISTANCES**

We made this suit to be compliant with ITU rules but with the fabrics, aerodynamics and cargo-carrying capacity to be ideal for 70.3 races, and even to win the odd Ironman World Championships, like Fred Van Lierde did in this suit in 2013. It has the fabrics, the pockets and the KISS Tri seat pad of our Free long-distance race suits to offer exceptional performance in a wide variety of races.



ALSO AVAILABLE

**FREE TRI ITU SUIT FULLY PRINTED 4300225**

28 CORE SPR-OLY SUIT 4300466

SHORT DISTANCE

SIZES: <b>XXS-3XL</b>	<b>DISTANCE</b>
WEIGHT: <b>170 g</b> (Large)	LONG
	HALF
	OLYMPIC
	SPRINT

**TRIATHLON DISCIPLINES**   

Short-distance race suit for speed and comfort  
 Endurance Evolution fabric is lightweight but supportive  
 Close-cut top with longer legs  
 Reduced seaming for faster swims  
 Rear envelope pocket stays closed in the water but makes it easy to carry a gel  
 Fleece seat liner smooths out the bike ride but disappears on the run



# MEN'S RUN & TRAINING

---





**TECH TEE SHORT SLEEVE 4300485**SIZES: **XXS-3XL**WEIGHT: **110 g** (Large)**TRIATHLON DISCIPLINES** 

3D fabric is super lightweight and fast drying

Multi-filament polyester fabric with spandex/elastane for extra stretch

Close-to-body performance cut

Great for running, travel, or a quick trip to the podium

**TECH TEE LONG SLEEVE 4300484**SIZES: **XXS-3XL**WEIGHT: **130 g** (Large)**TRIATHLON DISCIPLINES** 

3D fabric is super lightweight and fast drying

Multi-filament polyester fabric with spandex/elastane for extra stretch

Close-to-body performance cut

Great for running, travel, or a quick trip to the podium






### ALII RUN TOP 4300210

SIZES: **XXS-3XL**

WEIGHT: **40g** (Large)

**TRIATHLON DISCIPLINES** 

A-Vent 70g 100% polyester microfiber fabric  
 Open-mesh knit for excellent ventilation  
 UPF 15 rating blocks 93% of UV rays  
 Looser fit for airflow between top and skin  
 Self-fabric collar



### MADE FOR ALI'I DRIVE

We took our insanely light and ventilated A-Vent fabric and gave it a loosish cut to allow maximum airflow between the top and the body. The top weighs next to nothing but covers a wide range of conditions: the fabric is excellent at keeping you dry when you want it too but really shines when you need cooling and can pour water over it at the aid stations.



### WILDWOOD RACE SINGLET 4300528

SIZES: **XXS-3XL**

WEIGHT: **65 g** (Large)

#### TRIATHLON DISCIPLINES

3D fabric is super lightweight and fast drying  
 Multi-filament polyester fabric with spandex/elastane for extra stretch  
 Racerback design  
 Anti-chafe binding



This minimalist run top will keep you cool and comfortable while running your favorite trail or doing your hardest speed workouts. The racerback design with generous armholes and chafe-free binding shows the attention to detail in this high-performance piece.

# WOMEN'S LONG DISTANCE

---





IMAGE: PR W SPEED SUIT 4300467

## ROSSO CORSA

## PR W SPEED SUIT 4300467

SIZES: XXS-2XL	DISTANCE
WEIGHT: 202 g (Large)	LONG
	HALF
	OLYMPIC
	SPRINT

## KISS TRI

TRIATHLON DISCIPLINES 

Pro-level long-distance race suit to deliver real aero benefits on the bike while providing comfort and cooling on the run

50-denier upper-body fabric is the thinnest, smoothest fabric for light weight and maximum aerodynamics

Active cooling for the run with moisture evaporating directly next to the skin

Silicone speed ribs on the sleeves induce turbulence to reduce drag on one of the most exposed parts of the body

Elbow-length sleeves and knee-length legs for maximum aerodynamics

2 rear pockets for ample nutrition storage

KISS Tri pad



ALSO  
AVAILABLE

**PR W SPEED SUIT  
NO SILICONE**  
4300468



IMAGE: FREE SANREMO 2 W SUIT SHORT SLEEVE 4300476

ROSSO CORSA

FREE SANREMO 2 W SUIT SHORT SLEEVE 4300478

SIZES: XXS-2XL	DISTANCE
WEIGHT: 174 g (Large)	LONG
	HALF
<b>KISS TRI</b>	OLYMPIC
	SPRINT

TRIATHLON DISCIPLINES

Second-generation Sanremo short sleeve suit is faster than ever. Velocity Rev2 main body fabric delivers aerodynamics with excellent fit and moisture management.

Back fabric is our Velocity mesh for breathability, yet it blocks 94% of UV rays for significant sun protection (UPF 16).

Elbow-length sleeves with raw-cut edges for maximum comfort and aerodynamics.

Castelli's Sanremo front opening makes it easier to bend for cycling and straighten out for the run and swim.

2 rear pockets lie flat in the swim but allow generous room for nutrition.

New short construction fits more securely with more muscle support.

GIRO® flat leg grippers on longer legs for maximum aerodynamics.

KISS Tri seat pad that provides comfort on the bike and that you almost don't feel during the run.



ALSO AVAILABLE

**FREE SANREMO 2 W SUIT SHORT SLEEVE FULLY PRINTED**  
4300477

44 FREE SPEED 2 W RACE TOP 4300469

LONG DISTANCE

SIZES: <b>XXS-2XL</b>	<b>DISTANCE</b>
WEIGHT: <b>96 g (Small)</b>	LONG
	HALF
	OLYMPIC
	SPRINT

**TRIATHLON DISCIPLINES**   

- Freedom of movement in the water, aerodynamics on the bike, comfort on the run
- Velocity Rev2 aero fabric on front-facing surfaces
- UPF 16 Velocity mesh back blocks 94% of UV light with generous breathability
- 2 rear pockets lie flat and prevent nutrition from bouncing around
- Giro<sup>3</sup> flat gripper elastic lies flat on lower back
- SnapLock fastener at lower back to clip to Free Tri Short to prevent riding up during swim or bike leg
- YKK<sup>®</sup> Camlock<sup>®</sup> zipper
- Elbow-length sleeves for maximum aerodynamics



LONG DISTANCE 45

46 **FREE W TRI SINGLET** 4300218

SIZES: <b>XXS-2XL</b>	<b>DISTANCE</b>
WEIGHT: <b>51g</b> (Small)	LONG
	HALF
	OLYMPIC
	SPRINT

**TRIATHLON DISCIPLINES**   

- SpeedFreak ventilated race fabric on front
- Velocity Mesh back gives wind-tunnel-proven speed on the bike
- SnapLock fastener at lower back to clip to Free W Tri Short to prevent riding up during swim or bike leg
- YKK® Camlock® zipper
- FreeAero 2 hydro- and aero-optimized pockets
- Soft-finish armholes to reduce chafing



**FREE W TRI SHORT** 4300220

SIZES: <b>XXS-2XL</b>	<b>DISTANCE</b>
WEIGHT: <b>109g</b> (Small)	LONG
	HALF
<b>KISS TRI</b>	OLYMPIC
	SPRINT

**TRIATHLON DISCIPLINES**   

- Instadry Speed fabric is fast in the swim with minimal water absorption
- Free construction for great anatomic fit
- KISS Tri seat pad is comfortable on the bike and virtually disappears on the run
- SnapLock fastener at waist to clip Free Speed 2 W Race Top or Free W Tri Singlet into place for swim and bike
- Flat-lock stitching
- 2 small pockets on hip for nutrition during run
- GIRO Air leg gripper elastic



SNAPLOCK FASTENER TO CLIP TO FREE SPEED 2 W RACE TOP OR FREE W TRI SINGLET



ALSO AVAILABLE

**FREE W TRI SHORT FULLY PRINTED** 4300227



# WOMEN'S SHORT DISTANCE





ROSSO CORSA

## SD TEAM W RACE SUIT 4300527

SIZES: XXS-2XL

WEIGHT: 124 g (Large)

## DISTANCE

LONG

HALF

OLYMPIC

SPRINT

## TRIATHLON DISCIPLINES



Pro level short-distance race suit for best possible swim performance

Water repellent treatment and minimum amount of seams for reduced water resistance

Combination of light fabric on the upper body and compressive fabric in the hip area and legs for muscle support

Quick drying fabrics

Rear 40cm YKK® zipper with elastic cord closing at the bottom to avoid unintentional opening during the swim

Silicone leg gripper holds suit in place

Thin fleece seat liner



A completely new approach for sprint and short distance racing to meet the needs of ITU professionals.

Developed in close collaboration with the German Triathlon Federation (DTU).



IMAGE: FREE W TRI ITU SUIT 4300221

## ROSSO CORSA

## FREE W TRI ITU SUIT 4300221

SIZES: XXS-2XL

WEIGHT: 141g (Small)

## DISTANCE

LONG

HALF

OLYMPIC

SPRINT

## KISS TRI

## TRIATHLON DISCIPLINES



SpeedFreak ventilated race fabric on front of upper portion  
 Velocity Mesh back gives wind-tunnel-proven speed on the bike  
 Rear 30cm YKK® zipper  
 FreeAero 2 hydro- and aero-optimized pockets  
 Soft-finish armholes to reduce chafing  
 Instadry Speed fabric on short is fast in the swim with minimal water absorption  
 KISS Tri seat pad is comfortable on the bike and virtually disappears on the run  
 2 small pockets on hip for nutrition during run  
 GIRO Air leg gripper elastic

### FOR OLYMPIC TO IRONMAN DISTANCES

We made this suit to be compliant with ITU rules but with the fabrics, aerodynamics and cargo-carrying capacity to be ideal for 70.3 races, and even to win the odd Ironman World Championships, like Frederik Van Lierde did in this suit in 2013. It has the fabrics, the pockets and the KISS Tri seat pad of our Free long-distance race suits to offer exceptional performance in a wide variety of races.






ALSO  
AVAILABLE

**FREE W TRI ITU SUIT  
FULLY PRINTED  
4300228**



CORE W SPR-OLY SUIT 4300472

SIZES: <b>XXS-2XL</b>	<b>DISTANCE</b>
WEIGHT: <b>149 g</b> (Small)	LONG
	HALF
	OLYMPIC
	SPRINT

TRIATHLON DISCIPLINES   

- Short-distance race suit for speed and comfort
- Endurance Evolution fabric is lightweight but supportive
- Close-cut top with longer legs
- Reduced seaming for faster swims
- Rear envelope pocket stays closed in the water but makes it easy to carry a gel
- Fleece seat liner smooths out the bike ride while disappearing on the run



# WOMEN'S RUN & TRAINING

---



**TECH TEE W SHORT SLEEVE** 4300487SIZES: **XXS-2XL**WEIGHT: **93 g** (Small)**TRIATHLON DISCIPLINES** 

3D fabric is super lightweight and fast drying

Multi-filament polyester fabric with spandex/elastane for extra stretch

Close-to-body performance cut

Great for running, travel, or a quick trip to the podium

**TECH TEE W LONG SLEEVE** 4300486SIZES: **XXS-2XL**WEIGHT: **120 g** (Small)**TRIATHLON DISCIPLINES** 

3D fabric is super lightweight and fast drying

Multi-filament polyester fabric with spandex/elastane for extra stretch

Close-to-body performance cut

Great for running, travel, or a quick trip to the podium

**ALII W RUN TOP** 4300217SIZES: **XXS-2XL**WEIGHT: **31 g** (Small)**TRIATHLON DISCIPLINES** 

A-Vent 70g 100% polyester microfiber fabric

Open-mesh knit for excellent ventilation

UPF 15 rating blocks 93% of UV rays

Looser fit for airflow between top and skin

Self-fabric collar





## WILDWOOD RACE W SINGLET 4300529

SIZES: XS-2XL

WEIGHT: 53 g (Small)

### TRIATHLON DISCIPLINES

3D fabric is super lightweight and fast drying

Multi-filament polyester fabric with spandex/elastane for extra stretch

Racerback design

Anti-chafe binding



This minimalist run top will keep you cool and comfortable while running your favorite trail or doing your hardest speed workouts. The racerback design with generous armholes and chafe-free binding shows the attention to detail in this high-performance piece.

# KID'S



## CORE KID SPR-OLY SUIT 4300473

SIZES: 6Y-12Y	DISTANCE
WEIGHT: 149 g (Small)	LONG
	HALF
	OLYMPIC
	SPRINT

### TRIATHLON DISCIPLINES

- Short-distance race suit for speed and comfort
- Endurance Evolution fabric is lightweight but supportive
- Close-cut top with longer legs
- Reduced seaming for faster swims
- Rear envelope pocket stays closed in the water but makes it easy to carry a gel
- Fleece seat liner smooths out the bike ride while disappearing on the run





# ACCESSORIES



**ROSSO CORSA 9 SOCK** 4300029

SIZES: **S/M - L/XL - XXL**

Meryl® Skinlife antibacterial fibers.  
High-density elastic mid-foot support band.  
Flat-seam toe.  
9 cm ankle cuff.  
Minimum order quantity is 100 pairs.



**ROSSO CORSA 13 SOCK** 4300279

SIZES: **S/M - L/XL - XXL**

Meryl® Skinlife antibacterial fibers.  
High-density elastic mid-foot support band.  
Flat-seam toe.  
13 cm ankle cuff.  
Minimum order quantity is 100 pairs.



**ROSSO CORSA 18 SOCK** 4800522

SIZES: **S/M - L/XL - XXL**

Meryl® Skinlife antibacterial fibers.  
High-density elastic mid-foot support band.  
Flat-seam toe.  
18 cm ankle cuff.  
Minimum order quantity is 100 pairs.



**FAST FEET SOCKS** 4300299

SIZES: **S/M - L/XL - XXL**

Textured Lycra® fabric at cuff for maximum aerodynamics.  
19 cm ankle cuff.  
Meryl® Skinlife antibacterial fibers.  
High-density elastic mid-foot support band.  
Flat-seam toe.  
Minimum order quantity is 10pairs.



**FAST FEET TT SHOECOVER** 4300521

SIZES: **S-2XL**

Textured Lycra® fabric at cuff for maximum aerodynamics.  
19 cm ankle cuff.  
Meryl® Skinlife antibacterial fibers.  
High-density elastic mid-foot support band.  
Flat-seam toe.  
Minimum order quantity is 10pairs.



**UPF 50+ LIGHT ARM SLEEVES** 4516036

SIZES: **S-XL**

Solare fabric keeps the chill off without causing overheating  
UPF 50+ protection  
Polyester based for excellent moisture management  
Double-side silicone elastic at top for excellent grip

**NON-CUSTOMIZABLE!**

# HOW IT WORKS

## 01. CONTACT

To request information, please contact Castelli Servizio Corse by email: [info@serviziocorse.co.uk](mailto:info@serviziocorse.co.uk) or visit us at [www.castellicustom.co.uk](http://www.castellicustom.co.uk).

## 04. FIT KIT REQUEST

Samples for sizing & evaluation are available by request. We ask that all samples are returned at your expense with 10 days of receipt to ensure they are available for other customers.

## 07. PRODUCTION

Once approvals for art, color and units, and deposit money have been received production will begin. No additional changes can be made at this time. Completion time is 8 weeks from factory sign-off.

## 02. GET A QUOTE

To request a quote, simply fill out the order form which we send you by email ([info@serviziocorse.co.uk](mailto:info@serviziocorse.co.uk)). Indicate the quantities required per style and submit via email. Size breakdowns are helpful but not necessary for a quote.

## 05. FINAL ORDER SUBMISSION

Submit your final order and you will be provided with a Live 3D artwork to approve. This is your last opportunity to make revisions or correct errors.

## 08. PRODUCTION MINIMUMS

The production minimum for any item is 10 pieces. For reorders, the minimum is 10 pieces per item.

## 03. DESIGN

Completed designs prepared on Castelli templates need to be submitted with your quote request. For every logo not supplied in vector-graphic format, a small fee will be incurred. Vector formats include: .ai, .eps, and .pdf (open).

After submitting your design and quote, you will receive shortly an electronic art file of your final design. A full-size color proof printed on fabric can be ordered for an additional fee.

## 06. DEPOSIT

Deposit equal to 50% of the total order will be requested after review of the quote in order to begin the graphic design.

# SIZE CHARTS

### MEN (UNISEX)

		XXS	XS	S	M	L	XL	2XL	3XL	4XL	5XL
<b>Chest</b>	<b>A</b>	84 cm	88 cm	92 cm	96 cm	100 cm	105 cm	110 cm	115 cm	-	-
<b>Waist</b>	<b>B</b>	72 cm	76 cm	80 cm	84 cm	88 cm	93 cm	98 cm	104 cm	-	-
<b>Hips</b>	<b>C</b>	86 cm	90 cm	94 cm	98 cm	102 cm	107 cm	112 cm	116 cm	-	-
<b>Inseam</b>	<b>D</b>	80 cm	81 cm	82 cm	83 cm	84 cm	85 cm	86 cm	87 cm	-	-

### WOMEN

		XXS	XS	S	M	L	XL	2XL	3XL	4XL	5XL
<b>Chest</b>	<b>A</b>	74 cm	79 cm	84 cm	89 cm	94 cm	99 cm	104 cm	-	-	-
<b>Waist</b>	<b>B</b>	58 cm	63 cm	68 cm	73 cm	78 cm	83 cm	88 cm	-	-	-
<b>Hips</b>	<b>C</b>	82 cm	87 cm	92 cm	97 cm	102 cm	107 cm	112 cm	-	-	-
<b>Inseam</b>	<b>D</b>	74 cm	75 cm	76 cm	77 cm	78 cm	79 cm	80 cm	-	-	-

### SOCKS – Euro shoe size

	S / M	L / XL	2XL
<b>Shoe Size</b>	36-39	40-43	44-47

### WARMERS

SIZE	SHORT/JERSEY	WEIGHT
<b>S</b>	S - M	45 - 60 Kg
<b>M</b>	S - M	60 - 70 Kg
<b>L</b>	L - XL	70 - 80 Kg
<b>XL</b>	2XL - 3XL	> 80 Kg



# FABRICS AND PAD

## SPEEDBREAK

This ventilated and light weight fabric is ideal for the front of our Free tri suits to maximize aerodynamics on the bike and to keep you as cool as possible on the run. The micro mesh front allows ample air flow and has just the right stretch to keep you comfortable.

## A-VENT

We chose this fabric because its semi open knit structure allows the air to flow through and cool your body. It's extremely light weight, and with 100% polyester yarns it doesn't stay wet for long. We like the way it cools the body if you pour water over it, yet otherwise is very good at staying dry.

## PROSECCO STRADA

Prosecco Strada is a major step forward in classic jersey fabric. Its controlled stretch allows designers to engineer a perfect fit. Prosecco hydrophylic treatment helps keep you dryer and more comfortable than ever before.

## VELOCITY FABRIC

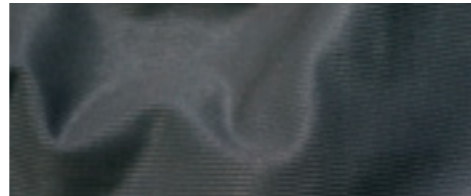
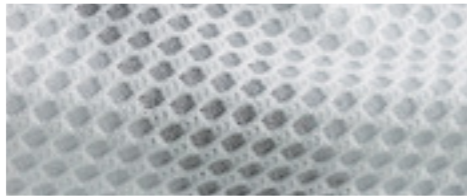
Silky and soft, Velocity fabric provides maximum comfort the entire race. Lightweight polyester fits like a second skin for maximum aerodynamics and dries almost instantly.

## VELOCITY MESH

The 3D weave reduces contact area with your skin to provide excellent wicking. Used in key areas to improve boundary layer aerodynamics.

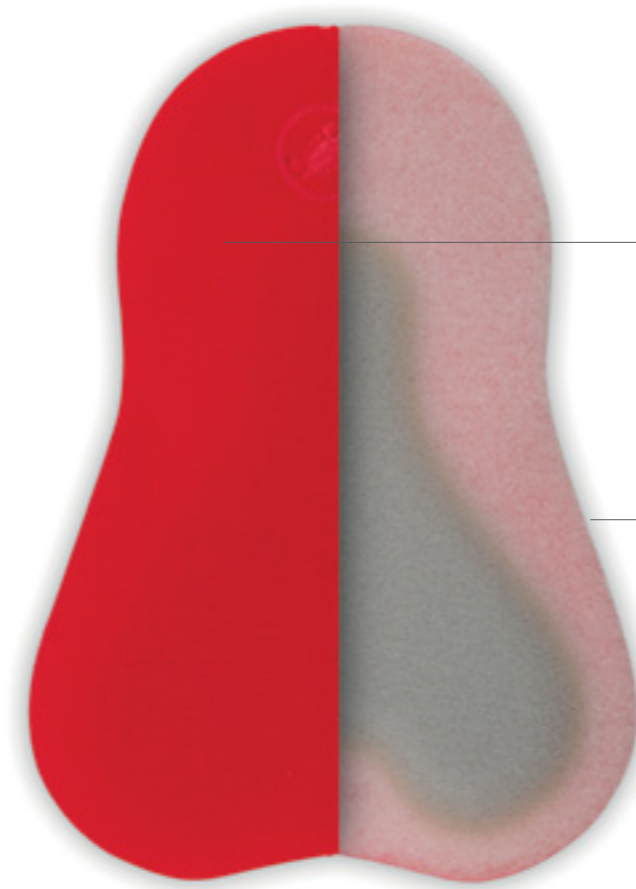
## INSTADRY SPEED FABRIC

Gives you just enough compression to support muscles but never constricts movement. Doesn't absorb moisture so it stays light in the water.



## KISS<sup>TRI</sup>

Multi-density KISS TRI-pad foam is optimized for aerobar position on the bike, and practically disappears during the swim and run.



### 01. SEAMLESS SKIN CARE LAYER

A super soft, brushed microfiber top that maximizes comfort and fit. Seamlessly engineered to eliminate chafing and abrasion. Flexible to move with you. Bacteriostatic treatment to avoid saddle sores and infection.

### 02. MULTI DENSITY FOAM

Specifically designed for the triathlete. Minimum bulk doesn't get in the way during the swim and run legs. Extra fast drying foam prevents chafing on the bike.

**C A S T E L L I  
C U S T O M  
C L O T H I N G**

—  
S E R V I Z I O  
C O R S E

INFO@SERVIZIOCORSE.CO.UK

CASTELLCUSTOM.CO.UK

 CASTELLCUSTOMUK



**CASTELLI**

