

TA4013FP Through core type precision current transformer **YHDC** 1992®

Characteristics:

Epoxy resin encapsulated, Nanocrystalline core, mini outline size, fully enclosed. Electrical load remote monitoring, as the input signal of electric control system, lack of phase indicating, electrical energy measuring, motor monitoring.

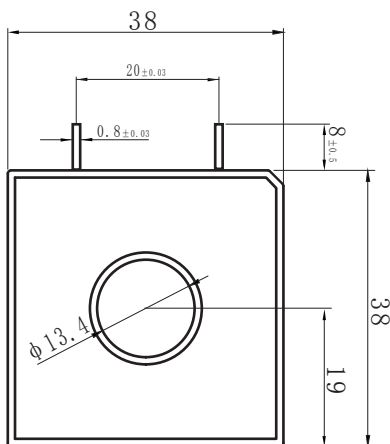
Technical index:

Mounting type: Sub-plate mounting
 Material of the core: Nanocrystalline
 Flame resistance: UL94-V0
 Execution standard: GB20840-2014
 Operating temperature: -20°C~+70°C
 Storage temperature: -30°C~+80°C
 Frequency range: 20Hz-20KHz
 Dielectric strength: 3.5KV 50Hz 1min

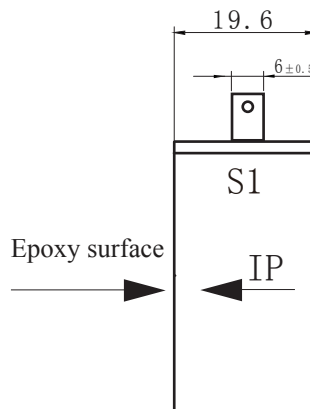
Electrical parameters: (The following parameters are typical values and actual values will be subject to product testing)

Model	TA4013FP-100	TA4013FP-200	TA4013FP-300	Unit
Rated input	100	100	100	A
Rated output	100	50	33.3	mA
Turns ratio	1: 1000	1: 2000	1: 3000	
Linearity	≤0.2	≤0.2	≤0.2	%
Sampling resistance	10	20	30	Ω
Weight	49	49	49	g

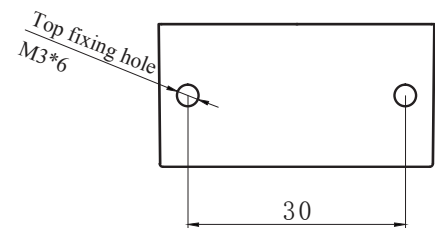
Dimensions (in mm±0.5) :



Front view



Side view

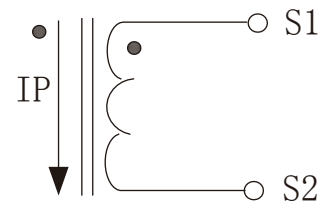


Bottom view

Product picture : (the printed words are for reference only, subject to the actual product)



Schematic diagram:



current output type.
 the secondary is not allowed to open.

