

TA1310 busbar built-in precision current transformer



Characteristics:

Epoxy resin encapsulated, nanocrystalline, small size, fully enclosed, electrical load remote monitoring, as the input signal of the electronic control system, phase loss indication, electricity measurement, motor running state monitoring.

Technical index:

- Mounting type: PCB
- Material of core: Nanocrystalline
- Flame resistance: UL94-V0
- Applicable standards: GB20840-2014
- Operating temperature: $-20^{\circ}\text{C} \sim +70^{\circ}\text{C}$
- Storage temperature: $-30^{\circ}\text{C} \sim +80^{\circ}\text{C}$
- Work frequency: 20Hz-20KHz
- Dielectric strength: 2KV 50Hz 1min

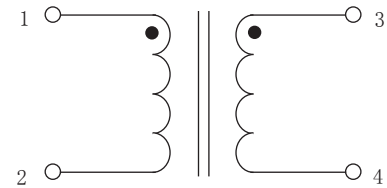
Electrical parameters: (The following parameters are typical values values will be subject to product testing)

Model	TA1310 -01	TA1310 -02	TA1310 -03	Unit
Rated input	2	1.25	0.5	A
Rated output	2	2.5	5	mA
Turns ratio	1: 1000	2: 1000	10: 1000	
Linearity	≤ 0.2	≤ 0.2	≤ 0.2	%
Sampling resistance	200	300	400	Ω
Weight	8			g

Product picture : (the printed words are for reference only, subject to the actual product)



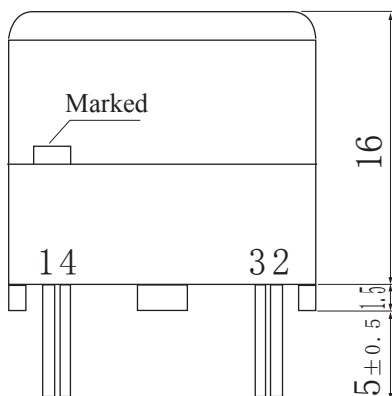
Schematic diagram:



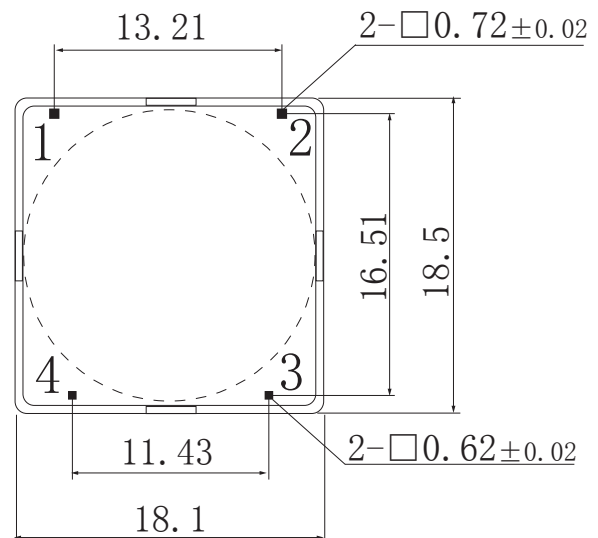
Current output type

The secondary is not allowed to open circuit.

Dimensions (in mm ± 0.5) :



Front view



Bottom view