

Φ25mm Aperture Split core current transformer



Front view



Opening view

Characteristic

- Opening and closing structure
- Easy to install
- Lead wire output
- Plate type mounting

Product application

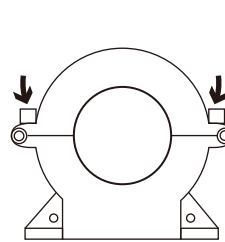
- Portable instrument
- Household metering
- Monitor motor load

Product advantage

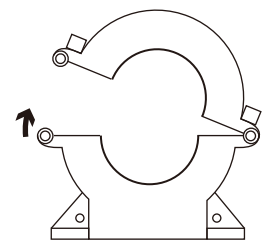
- Economic and practical
- Improve efficiency
- High cost performance

Installation diagram

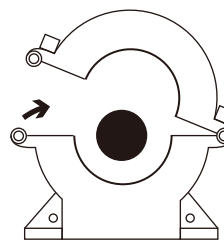
Primary threading method



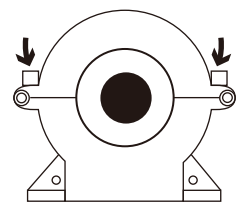
1. Unscrew the screw



2. Open upward



3. Put in lead wire



4. Buckle and screw

Typical technical index:

- Material of core——Silicon steel sheet
- Working voltage——Phase voltage $\leq 720V$
- Working temperature—— $-20^{\circ}C \sim +60^{\circ}C$
- Storage temperature—— $-25^{\circ}C \sim +65^{\circ}C$
- Frequency range—— $50Hz \sim 60Hz$
- Dielectric strength——output (outputbare conductor) AC 3.5KV/1min 5mA 50Hz
- Weight——204g

Electrical parameters: (The following parameters are typical values and actual values will be subject to product testing)

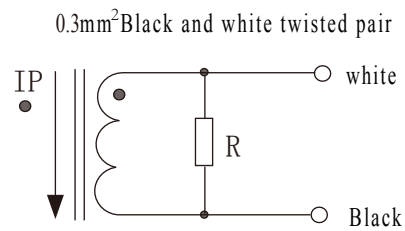
Can be made according to user requirements parameters

	Input current A	Output current A	Rated output power VA				Number of turns
			0.5 grade	1 grade	3 grade	5 grade	
1A Output	50A	1A	-	1	2	-	1
	100A	1A	1	1.5	2.5	-	1
	200A	1A	1.5	2.5	5	-	1
	300A	1A	2	3.75	7.5	-	1
	400A	1A	2.5	3.75	7.5	-	1
5A Output	100A	5A	-	-	2	-	1
	200A	5A	-	1.5	3.75	-	1
	300A	5A	1.5A	2.5A	3.75	-	1

	Input current A	Output voltage V	Accuracy %	Sampling resistor Ω	Load resistance $K\Omega$	Number of turns
0.333V Output	50A	0.333V	1%	built-in	$>10K\Omega$	1
	100A	0.333V				
	200A	0.333V				
	300A	0.333V				
	400A	0.333V				

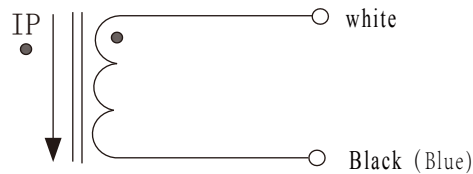
Wiring schematic diagram:

Cable:



Voltage output type

Secondary are not allowed to short circuit



Current output type

Secondary is not allowed to open circuit

Lead specification:

0.3mm²Black and white twisted pair wire

0.5mm²Black and white twisted pair wire

1.5mm²Blue and white soft wire

Lead color: white,blue (black)

Lead length: 1m

Instructions:

1.Primary threading direction: marked by arrow

2.Secondary output direction:

white line → black line

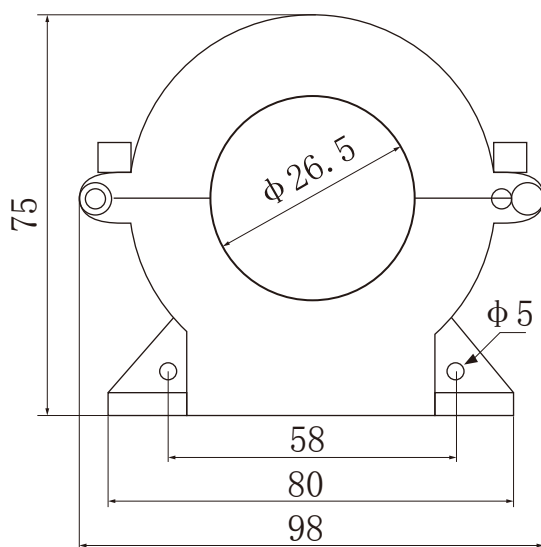
Note:

0.333V output is 0.3mm²black and white twisted pair

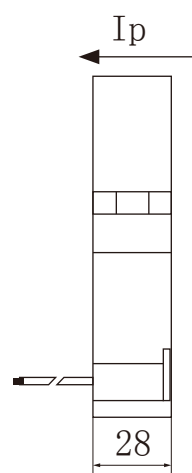
1A output is 0.5mm² black and white twisted pair

100/5~300/5 is 1.5mm² blue and white twisted pair

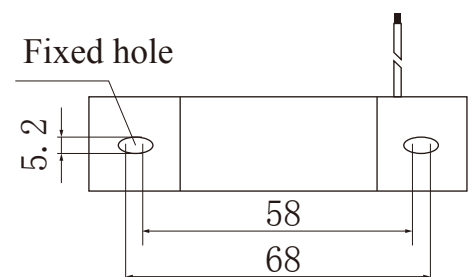
Dimensions: (in:mm)



Front view



Side view



Bottom view