

Characteristics:

It is used to drive IGBT, MOS pipe and transmit high-frequency signal isolation.

Technical Index:

Installation method: PCB

Flame resistance : UL94-V0

Operation temperature: $-20^{\circ}\text{C} \sim +50^{\circ}\text{C}$

Storage temperature: $-30^{\circ}\text{C} \sim +85^{\circ}\text{C}$

Work frequency: 10KHz~100KHz

Dielectric strength: Pri/Sec 4.5KV 50Hz 1min

Sec/Sec 500V 50Hz 1min

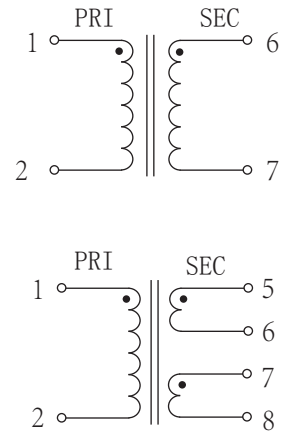
Product picture print for reference only, subject to the actual product



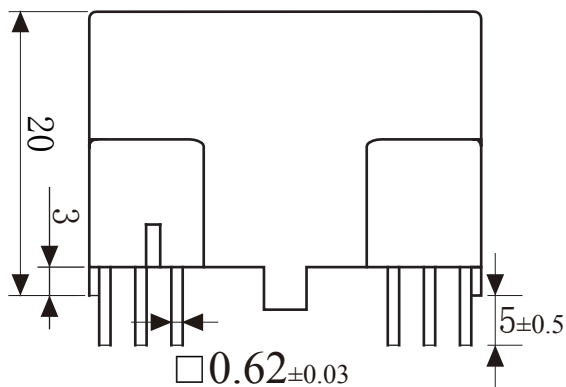
Schematic Diagram :

Electrical parameters: (The following parameters are typical values and actual values will be subject to product testing)

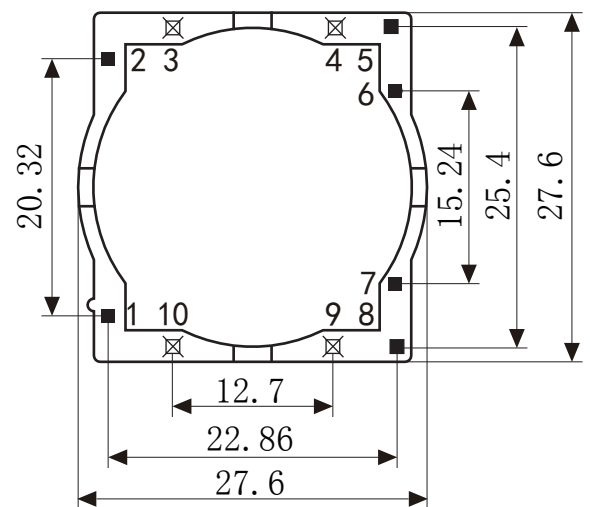
Project	Model Parameter	Model						Unit
		D4185 -101	D4185 -201	D4185 -301	D4185 -111	D4185 -211	D4185 -311	
Vout microsecond integral		1000	1000	1000	1000	1000	1000	μvs
Input pulse amplitude		15	20	30	15	20	30	V
Output pulse amplitude		≥ 12	≥ 8	≥ 8	$\geq 12 \times 2$	$\geq 8 \times 2$	$\geq 8 \times 2$	V
Turns ratio		1 : 1	2 : 1	3 : 1	1 : 1 : 1	2 : 1 : 1	3 : 1 : 1	
Load resistance		20	20	20	20	20	20	Ω
duty ratio		1 : 2	1 : 2	1 : 2	1 : 2	1 : 2	1 : 2	
Pulse width		66	50	33	66	50	33	μs
Leading edge time		≤ 1	≤ 1	≤ 1	≤ 1	≤ 1	≤ 1	μs
Main circuit operating voltage		500	500	500	500	500	500	V
Weight		30	30	30	30	30	30	g



Dimensions (in $\text{mm} \pm 0.5$) :



Front view



Bottom View