

Closed type power distribution transformer



Front view



Quantity*4

Sub-plate mounting

Accessories drawing



Quantity*2

Platen mounting

Accessories drawing

Product features

- Through cable or copper row
- Terminal output
- Two mounting methods for sub-plate/platen

Product application

Current measurement, monitoring and protection of:

- AC motor
- Lighting device
- Complete cabinet
- Industrial network
- air compressors



Sub-plate mounting



Platen mounting

Product advantage

- Economical and practical, improve efficiency
- The terminal design has sufficient safety distance at both ends
- The end cap is a buckled structure with high mechanical strength
- Available in a variety of sizes (other models in the same series)

Typical technical index:

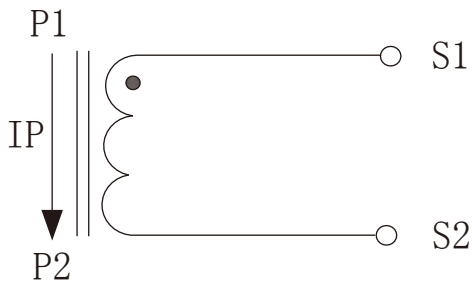
- Material of core——Silicon steel sheet
- Working voltage——Phase voltage $\leq 720V$
- Working temperature—— $-25^{\circ}C \sim +50^{\circ}C$
- Storage temperature—— $-35^{\circ}C \sim +70^{\circ}C$
- Frequency range—— $50Hz \sim 60Hz$
- Fair resistance——UL94-V0
- Dielectric strength——Output/Outer shell AC 3.5KV/1min 5mA 50Hz
- Weight--322g

Electrical parameters: (The following parameters are typical values and actual values will be subject to product testing)

Can be customized parameters

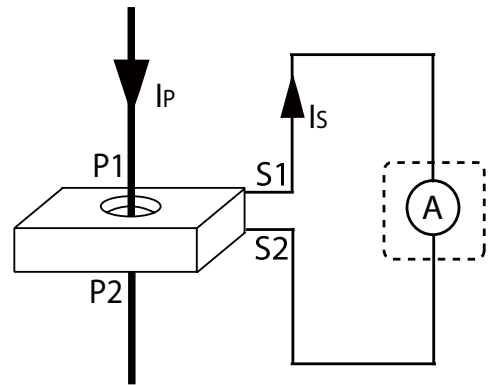
| | Input current A | Output current A | Rated output powerVA | | | | | Number of turns |
|----------------|--------------------|---------------------|----------------------|-----------|------------|-----------|---------|-----------------------|
| | | | 0.2S grade | 0.2 grade | 0.5S grade | 0.5 grade | 1 grade | |
| 0.1A Output | 100A | 0.1A | - | 20 | - | 20 | 20 | 1 |
| | 120A | 0.1A | - | 20 | - | 20 | 20 | 1 |
| | 150A | 0.1A | - | 20 | - | 20 | 20 | 1 |
| 1A Output | 75A | 1A | - | - | - | - | 1.5 | 1 |
| | 100A | 1A | - | - | - | 1.5 | 2 | 1 |
| | 150A | 1A | - | - | - | 1.5 | 2.5 | 1 |
| 5A Output | 75A | 5A | - | - | - | 1 | 2.5 | 1 |
| | 100A | 5A | - | - | - | 1.5 | 2.5 | 1 |
| | 150A | 5A | - | - | - | 2.5 | 5 | 1 |
| | 200A | 5A | 1 | 2 | 2 | 3.75 | 6.25 | 1 |

Wiring schematic diagram:

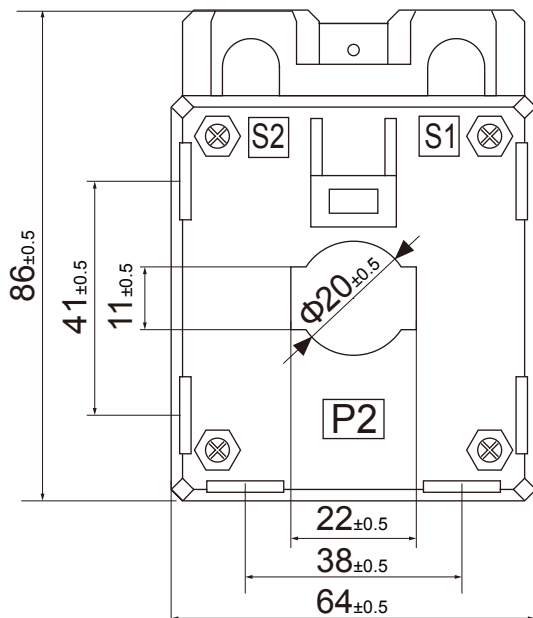


Current output type

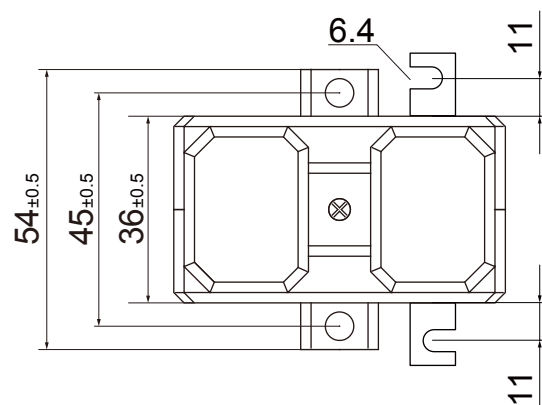
Secondary doesn't allow open circuit



Outline size: (in:mm ± 0.5) :



Front view



Bent lug size View