

A dynamic splash of clear blue water against a white background, with numerous bubbles and droplets scattered throughout. The water appears to be falling from the top left, creating a sense of movement and freshness.

SPAPURE

Complete Spa Care

SPA CARE GUIDE



Congratulations

on the purchase of your new spa or hot tub.

It's time to start relaxing. As a new spa or hot tub owner, you now have the pleasure of relieving yourself from day-to-day stress while escaping in hot bubbling spa water.

In order to enhance your spa experience, we have developed this Spa Pure Spa Care Guide to provide you with general knowledge of caring for your spa and spa water. Once your freshly filled spa water has been treated, you will be able to enjoy your spa with our quick 10-minute per week Pure and Simple Spa Care program.

Relax and enjoy your spa with Pure and Simple Spa Care from Spa Pure.

Getting Started

Before filling your spa, you need to know the chemical makeup of the “source water” or the water you’re using to fill your spa. To do this, simply take a sample of the water to your local spa retailer to have it professionally tested, or test the water using Spa & Hot Tub Test Strips.

Test results will identify what levels of metals and minerals exist in the water and determine if any adjustments are needed to properly adjust your source water once the spa is initially filled.

It’s important to realize that spa water is different from pool water. In a spa, the water is heated to between 98 - 104° F, a temperature much warmer and more turbulent than pool water and therefore, needs to be treated differently than pool water.

Spa Pure products are specifically formulated for spas/hot tubs and need to be used to avoid common hot water problems arising from residual soaps, deodorants, perfumes, natural body oils and other cosmetics.

Now begin your spa/hot tub experience by filling your spa.

Please refer to each bottle label for detailed instructions on applications and usage.

Filling Your Spa

Recommended Products:

Spa Pure Stain & Scale Preventer

1. Fill your spa to the center of the skimmer or the middle of the tile line. If you’re using a garden hose to fill the spa, remember to run water for several minutes to flush out any bacteria that might have accumulated in the residual water of the hose before putting it in the spa.
2. As you fill the spa, add one bottle of Spa Pure Stain & Scale Preventer, a metal removing agent, to prevent minerals such as calcium, iron, copper, and manganese from staining the spa surface or damaging the heater and plumbing.

Proper treatment when first filling your spa will not only prevent later problems and spa down time, but will reduce the time and expense required to fix problems.

Balancing The Water

Recommended Products:

- Spa & Hot Tub Test Strips** (included in kits)
- Spa Pure pH Up** (included in kits)
- Spa Pure pH Down** (included in kits)
- Spa Pure Clarifier** (included in kits)
- Spa Pure Alkalinity Increaser***
- Spa Pure Hardness Increaser***
- Spa Pure Liquid Hardness Increaser***

** Sold individually at your local Spa Pure Dealer*

Before filling your spa or hot tub, you should have had your source water tested either professionally or by using Spa & Hot Tub Test Strips. It’s also important to test your water regularly using test strips or a liquid test kit. By keeping your spa water balanced, you will avoid many problems that occur with spa water. The three most important factors in balancing spa water are pH, total alkalinity and calcium hardness. Spa & Hot Tub Test Strips allow for quick testing and are easy to read.

pH

It is critical that the pH of your spa water stay within the recommended range of 7.4 - 7.6. Any fluctuations above or below this range can cause spa water to be corrosive or scale forming. pH is easily adjusted by using pH Up or pH Down. For more convenience use Liquid pH Plus or Liquid pH Minus.

Total Alkalinity

Total alkalinity acts as a buffer preventing the pH levels from changing as additional chemicals or other substances are added to the water. Any fluctuation above or below the recommended range of 80 - 120 ppm causes the pH to be unstable causing corrosion, cloudy water or scaling. When the total alkalinity needs adjusting, use either granular Spa pH Up or liquid Spa Up or Spa pH Down or use Alkalinity Increaser.

Calcium Hardness

Spa water requires some calcium to be present. The recommended range for calcium is between 200 - 400 ppm. Calcium levels outside of this range can cause scale buildup, foaming, or corrosion to equipment and plumbing. To raise the calcium level, use Spa Pure Hardness Increaser. However, the only way to lower the calcium level is to drain part of the water and refill with soft water. Using a sequestering agent such as Spa Pure Stain & Scale Preventer will prevent calcium and scale formations by chemically bonding with the calcium to keep it in solution.

Once you've determined the readings for pH, total alkalinity and calcium hardness, you need to adjust your water so that the levels fall within the normal ranges. Testing your spa water regularly will make you aware of any fluctuations in water balance. If your spa water does not fall within the recommended ranges and remains unbalanced, problems such as cloudy water, scaling, equipment corrosion, and skin irritation can occur.

Refer to Troubleshooting Chart on page 12 if you are experiencing any of these or other problems.

RECOMMENDED RANGES FOR BALANCED WATER

pH	7.4 – 7.6
Total Alkalinity	80-120 ppm
Calcium Hardness	200-400 ppm
Metals	None
Total Dissolved Solids	Not more than 2000 ppm
Water Temperature	Not hotter than 104°

Adding A Sanitizer

Recommended Products:

- Spa Pure Bromine Tabs** (included in kit)
- Spa Pure Spa Shock** (included in kit)
- Spa Pure Granular Chlorine** (included in kit)
- Spa Pure Brom Bank** *

**Sold individually at your local Spa Pure Dealer.*

Using an effective sanitizer to control and prevent bacteria growth is an important part of any spa water maintenance program. No matter which sanitizing system you use, spa water must contain a proper level of bromine or chlorine to keep the water safe and sanitary.

Chlorine Sanitizing

The most commonly recognized sanitizer is chlorine. However, the effectiveness of chlorine depends heavily on the pH level of the spa water. In order to get the most effective and economical benefit of chlorine, the pH range of 7.4 – 7.6 is recommended. The best form of chlorine for spa use is Spa Pure Granular Chlorine, a fast dissolving granular that is virtually neutral in pH and therefore doesn't upset the water balance. A downside to using chlorine is that when chlorine combines with bather waste and other contaminants in the water, not only does it lose its sanitizing ability, it can cause odors, eye burn and skin irritation.

Bromine Sanitizing

Sanitizing with bromine has become increasingly popular. Whereas chlorine can sometimes cause offensive odors and skin irritation, bromine is much less likely to do so. Additionally, unlike chlorine, when bromine combines with bather waste and other contaminants in the water, it remains a very effective sanitizer. Bromine is also far less pH-dependent than chlorine. When using Spa Pure Bromine Tabs, you will also need to use Spa Pure Brom Bank during fill up to insure a fully bromine-based sanitizer system.

REMEMBER

Always circulate spa water for at least 10 minutes after adding sanitizer.

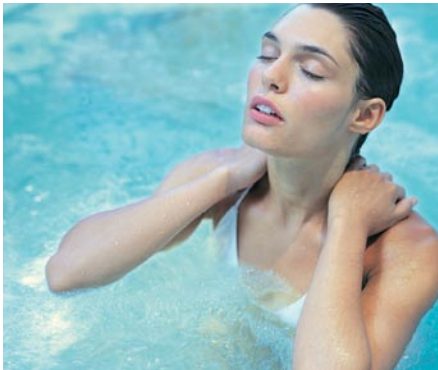
Shocking

Recommended Products:

Spa Pure Spa Shock (included in kits)

Shocking is also referred to as oxidation and is the process of removing organic materials such as body oils, cosmetics and lotions from the water. If these materials buildup, spa water can become cloudy or hazy. Using a shocking agent such as Spa Pure Spa Shock will oxidize the materials that may cause foul odors, eye or skin irritation, or dull, cloudy water.

No matter which sanitizing system you choose, it will be necessary to “shock” your spa on a routine basis. Spa Pure recommends shocking spa water after each use or at least once a week, whichever is more frequent. This will increase the effectiveness of your sanitizer. When using the Spa Pure sanitizing system, it is necessary to shock your spa water after each use.



Safety

A spa is extremely relaxing and enjoyable, but it is also important that your spa experience is a safe one. Please review the following safety tips before using your spa.

- Never heat your spa or hot tub above 104°.
- Avoid alcohol consumption when using your spa.
- Always shower before using your spa.
- Limit your time to 15 minutes per use.
- Maintain a proper sanitizer level with either chlorine or bromine.
- Add each chemical separately.
- Always add chemicals to water, not water to chemicals.
- Always store chemicals according to the manufacturer’s label instructions and keep them out of reach of children.
- If you are pregnant, have high blood pressure or a cardiovascular condition, consult your physician prior to using the spa.
- Never allow children to use the spa without adult supervision.

Pure & Simple Spa Care Program

Like any luxury item – a boat, a car, or even second home – you must maintain your spa, in order to enjoy it. Even though maintenance is important, you bought your spa to relax. This is why Spa Pure has developed the quickest and easiest-to-follow spa care program. Maintenance is the key to a clean and healthy spa. Once you have filled your spa and have completed the start-up process, follow our Pure and Simple Spa Care program for clear, clean water.

Prior to each use, test Spa Water to ensure that sanitizer level is in proper range of 3-5 ppm.

Start-Up

1. Add Spa Pure Stain & Scale Preventer during fill cycle.
2. Balance water according to your Spa Pure dealer's instructions, or use Spa & Hot Tub Test Strips to test water.
3. Add any Spa Pure sanitizer *
4. Test water using Spa & Hot Tub Strips to make sure water is still balanced.
5. Shock with Spa Pure Spa Shock.

Weekly

Always allow product to circulate in water for one minute with jets on prior to adding another product. Circulate water for 10 minutes after all products are added.

1. Test water using Spa & Hot Tub Test Strips. Adjust as needed.
2. Add Spa Pure Clarifier according to label directions.
3. Add Spa Pure Scum Away according to label directions.
4. Add Spa Pure Spa Shock to shock water according to label directions.

If spa is used more than three times per week, water testing and maintenance will need to be performed more frequently.

After Each Use

Shocking with Spa Pure Spa Shock after each use is suggested.

It's important to keep water clean and clear, but it's also important to make sure that you maintain spa equipment on a regular basis as well. Maintaining spa equipment such as filters and spa surfaces is key to extending the life of your spa.

Filter cycle should be run a minimum of 6-8 hours per day.

Monthly Cleaning

1. Remove the spa filter and clean using Spa Pure Filter Cleaner.

3-Month Cleaning

1. Drain your spa.
2. Deep clean filter with Spa Pure Filter Cleaner.
3. Follow **Filling Your Spa** procedure including having your source water tested professionally.

This program is intended for a residential spa with average use. It is not designed for public, commercial, or semi-public spas. If your spa is used more than 3X per week, you should check and make chemical additions more often than suggested.

Proper Levels For Balanced Water

pH	7.4-7.6
Alkalinity	80-120 ppm
Calcium Hardness	200-400 ppm
Sanitizer	3-5 ppm

* See Page 5 for Spa Pure Sanitizer Choices

Spa Pure Product Guide

CLARIFIERS

- **Spa Pure Clarifier** Neutralizes dirt, soap, oily films and allows filter to remove particles leaving clean, fresh water.

- **Spa Pure Scum Away** Breaks down oils, lotions and organics that can cause odors, scum lines and cloudy water.

- **Spa Pure Defoamer** Quickly eliminates unsightly foaming.

BALANCERS

- **Spa Pure Alkalinity Increaser** Granular formula that increases alkalinity levels.

- **Spa Pure Hardness Increaser** Increases water hardness levels to help prevent foaming and equipment corrosion.

- **Spa Pure Liquid Hardness Increaser** Increases water hardness levels to help prevent foaming and equipment corrosion.

- **Spa Pure Liquid pH Plus** Increases pH levels. No mixing required prior to application.

- **Spa Pure Liquid pH Minus** Lowers pH levels. No mixing required prior to application.

- **Spa Pure pH Up** Raises the pH and alkalinity of spa water.

- **Spa Pure pH Down** Lowers the pH and alkalinity of spa water.

SANITIZERS

- **Spa Pure Bromine Tabs** Slow dissolving. Sanitizes and disinfects water. Fits in most feeders.

- **Spa Pure Brom Bank** Use at start-up with Spa Pure Bromine Tabs for a complete bromine-based spa.

- **Spa Pure Granular Chlorine** Effectively sanitizes and disinfects hot water.

Spa Pure Product Guide

STAIN & SCALE TREATMENT

- **Spa Pure Stain & Scale Preventer** Prevents metal staining of spa surfaces. Use when filling spa.

SHOCK TREATMENTS

- **Spa Pure Spa Shock** Chlorine-free granular formulation. Rids spa of odor causing organic contaminants. Easy-to-use.

- **Spa Pure Brom Bank** Chlorine-free. Eliminates odors and reduces irritating contaminants. Use as a two-part system with Spa Pure Bromine Tabs.

SURFACE AND EQUIPMENT MAINTENANCE

- **Spa Pure Spa Cleaner** Natural formula that removes grease and grime from spa surfaces.

- **Spa Pure Filter Cleaner** Deep cleans dirt, oil, grease and soap film from cartridge and diatomaceous earth filters. Soak overnight for best results.

- **Spa & Hot Tub Test Strips** Easy-to-read strips that test for pH, alkalinity, calcium-hardness and bromine or chlorine.



Troubleshooting Common Problems

Most water conditions can be resolved by the recommended solutions below. Extreme conditions may warrant draining and refilling the spa. Stains or calcium deposits may require attention prior to refilling. It is recommended that the water be changed every three months or as needed to maintain water quality.

Cloudy Water	Excessive organic contaminants or lack of sanitizer	Shock with Spa Pure Spa Shock. Check and adjust sanitizer level.
	Buildup of unfilterable material	Use Spa Pure Clarifier.
	pH or total alkalinity out of balance	Test water and adjust pH Up, pH Down or Alkalinity Increaser.
	Dirty Filter	Use Spa Pure Filter Cleaner on a monthly basis, or deep clean with Spa Pure Filter Cleaner.
	Calcium too high	Use Spa Pure Stain & Scale Preventer on a weekly basis.
Chalky, white scale deposits (Calcium buildup)	High mineral content in water	Use Spa Pure Stain & Scale Preventer on a weekly basis.
	Water out of balance	Check water balance and adjust as necessary.
Cloudy green water	Low sanitizer level	Shock with Spa Pure Spa Shock. Check and adjust sanitizer level.
Clear green water	Dissolved copper or iron in spa water	Add Spa Pure Stain & Scale Preventer to sequester minerals in the water. Check pH level.
Brown water	High iron or manganese content	Add Spa Pure Stain & Scale Preventer to sequester minerals in the water. Check pH level.
Odor	Excessive organic contaminants	Shock with Spa Pure Spa Shock. Check and adjust sanitizer level.
Eye/skin irritation	Chloramines or excessive organic contaminants	Shock with Spa Pure Spa Shock.
	pH or total alkalinity out of balance	Test and adjust pH and total alkalinity as necessary.
Scum deposit on waterline	Oils, lotions, and detergents from bathers have caused buildup	Use Spa Pure Scum Away on a weekly basis.
Excessive Foaming	Buildup of body oils, cosmetics and detergents from bathers	Add Spa Pure Defoamer. Shock with Spa Pure Spa Shock.
	Calcium Hardness is too low	Add Spa Pure Hardness Increaser to obtain 200-400 ppm calcium level in the water.
	Large amounts of Total Dissolved Solids	Change water.

Your Spa Information

Spa Make _____

Spa Model _____

Spa Serial Number _____

Gallons of Water _____

Proper Levels For Balanced Water

pH	7.4-7.6
Alkalinity	80-120 ppm
Calcium Hardness	200-400 ppm
Sanitizer	3-5 ppm

** See Page 5 for Spa Pure Sanitizer Choices*

SPAPURE

Complete Spa Care

Haviland Consumer Products
421 Ann St. N.W. Grand Rapids, Michigan 49504-2075
800-333-0400