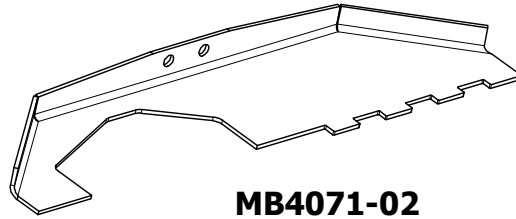
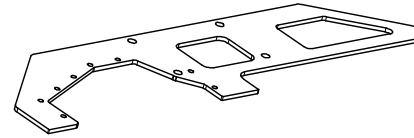


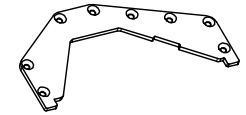
**MB4071-01**  
Qty: 1



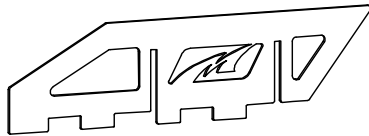
**MB4071-02**  
Qty: 1



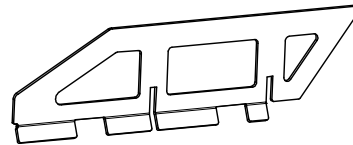
**MB4071-03**  
Qty: 1



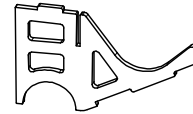
**MB4071-04**  
Qty: 1



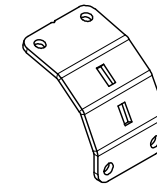
**MB4071-05**  
Qty: 1



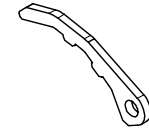
**MB4071-06**  
Qty: 1



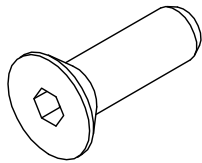
**MB4071-07**  
Qty: 2



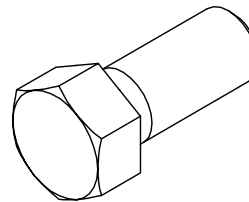
**MB4071-08**  
Qty: 1



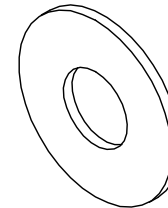
**MB4071-09**  
Qty: 1



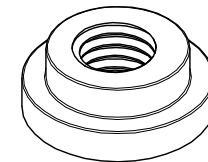
**FLAT HEAD SOCKET CAP SCREW**  
5/16"-18 x 1" BLACK OXIDE  
Qty: 8



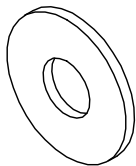
**HEX NUT**  
7/16"-14 x 1" GR 8 ZINC  
Qty: 4



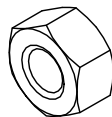
**FLAT WASHER**  
7/16"  
Qty: 4



**WELD NUT**  
7/16"-14  
Qty: 4



**FLAT WASHER**  
5/16"  
Qty: 8



**NYLOCK NUT**  
5/16"-18  
Qty: 8



Dwg/Part No:

**MB4071 - Shipping**

Description:

**78-79 Ford Dana 60 Front Axle Truss (Full Hydro)**

Mat'l:

Sheet No: 1 of 1

Rev No: 0