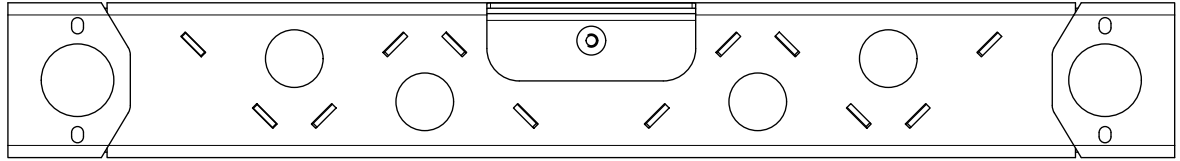
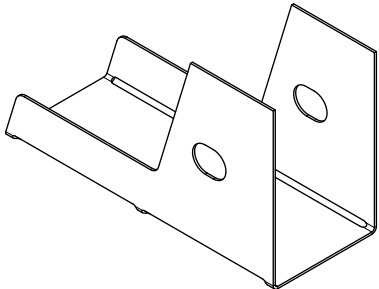


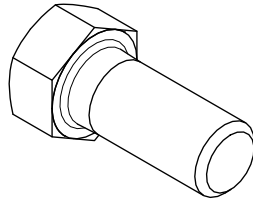
#MB1081
JK FRAME CHOP REAR BUMPER
QTY 1



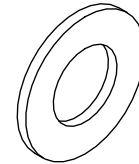
#MB3026
FRAME CHOP REAR CROSS MEMBER
QTY 1



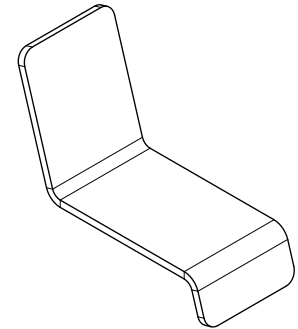
#MB3026-JIG
FRAME CUTTING JIG
QTY 1



HEX BOLT
7/16 x 1" GR 8 ZINC
QTY 3



FLAT WASHER
7/16"
QTY 3



#MB3025-13
FRAME RAIL CAP
QTY 2



Dwg/Part No:

MB1081 - Customer

Description:

Jeep JK Frame Chop Rear Bumper

Sheet No: **1** of **1**

Rev No: **0**

Mat'l: