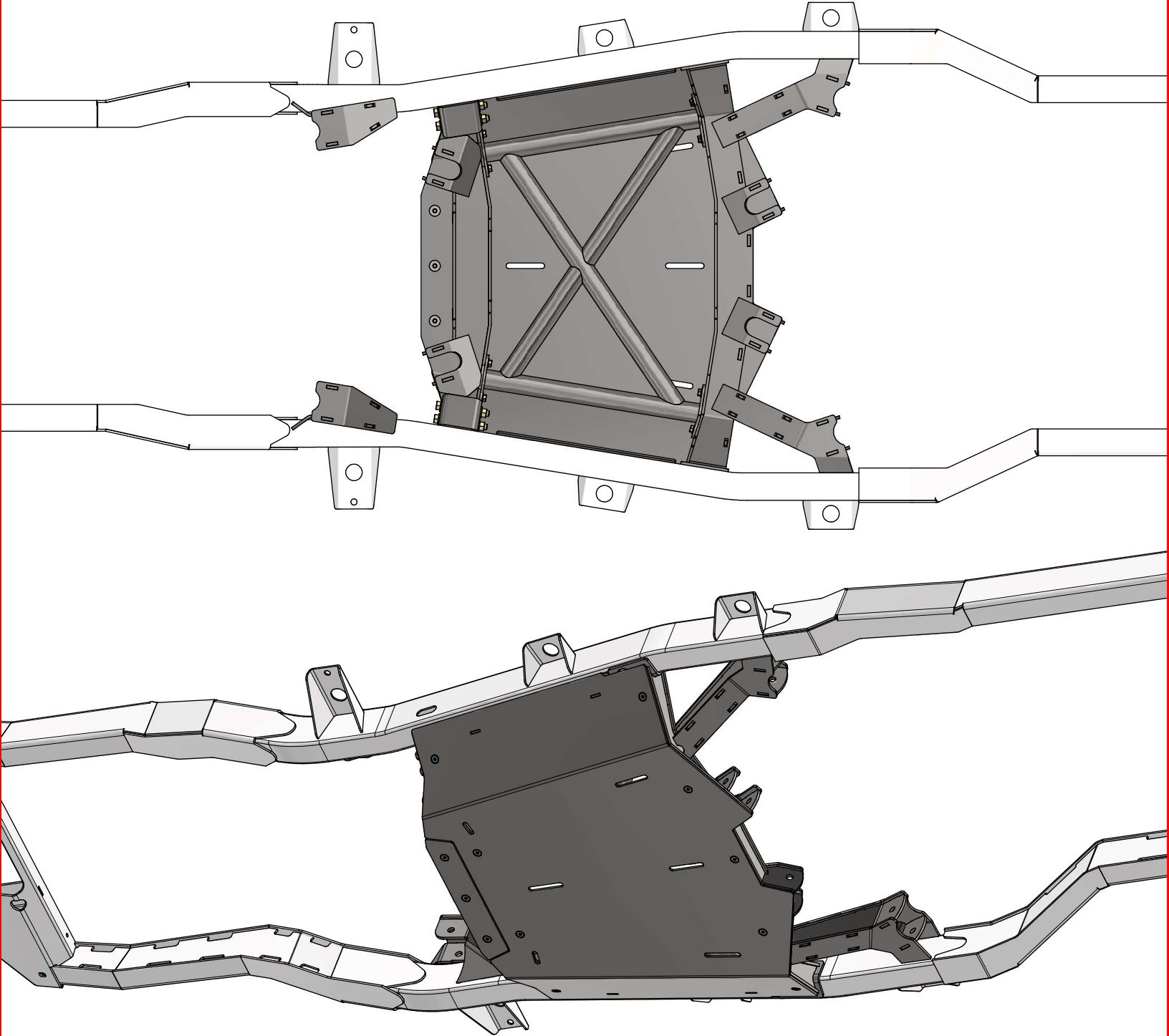


**MB7009 - Assembly Instructions YJ/TJ/LJ 4 Link Suspension Mounts**

# **MB7009 - DOUBLE TRIANGULATED 4 LINK SUSPENSION MOUNTS**

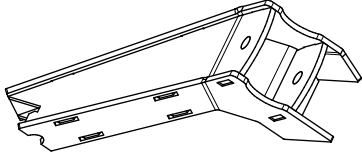
**COMPATIBLE WITH JEEP YJ/TJ/LJ**



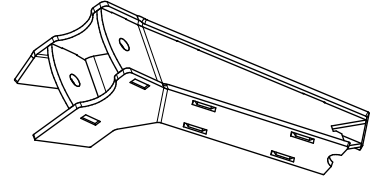
## **ASSEMBLY INSTRUCTIONS**

**MB7009 - Assembly Instructions YJ/TJ/LJ 4 Link Suspension Mounts**

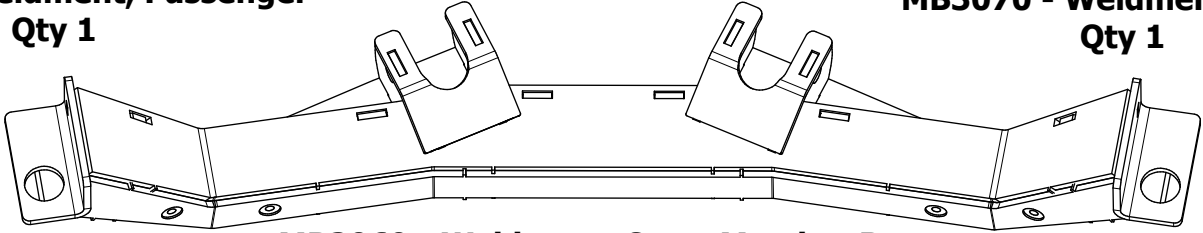
**CONTENTS**



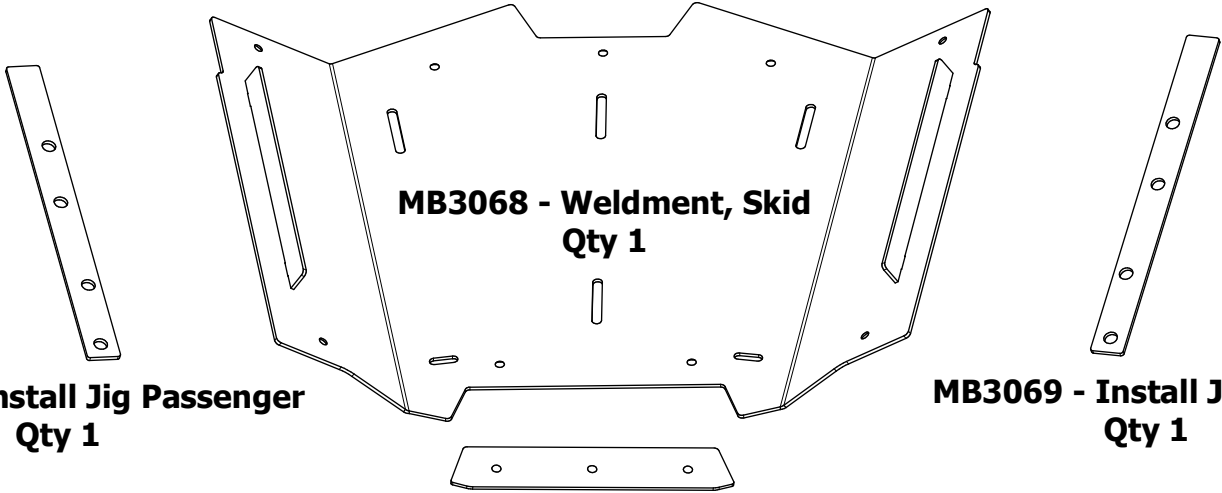
**MB3070 - Weldment, Passenger**  
Qty 1



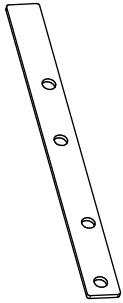
**MB3070 - Weldment, Driver**  
Qty 1



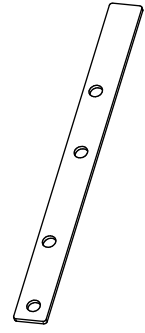
**MB3069 - Weldment, Cross Member Rear**  
Qty 1



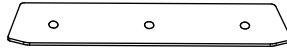
**MB3068 - Weldment, Skid**  
Qty 1



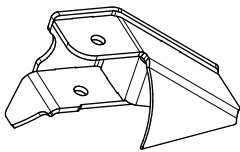
**MB3069 - Install Jig Passenger**  
Qty 1



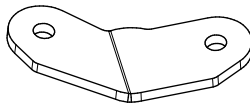
**MB3069 - Install Jig Driver**  
Qty 1



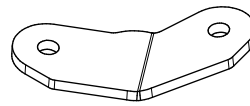
**MB3068-03**  
Qty 1



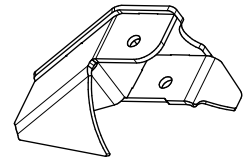
**MB3072 - Weldment, Passenger**  
Qty 1



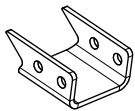
**MB3073-01\_MIR**  
Qty 1



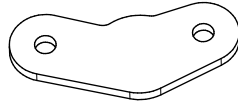
**MB3073-01**  
Qty 1



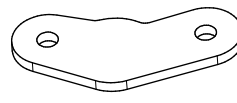
**MB3072 - Weldment, Driver**  
Qty 1



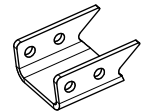
**MB3071-10\_MIR**  
Qty 1



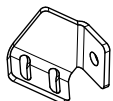
**MB3073-02\_MIR**  
Qty 1



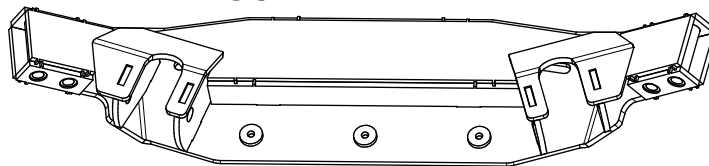
**MB3073-02**  
Qty 1



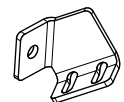
**MB3071-10**  
Qty 1



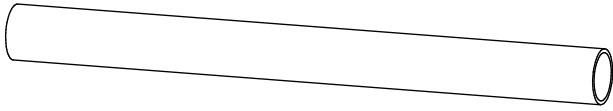
**MB3071-11**  
Qty 1



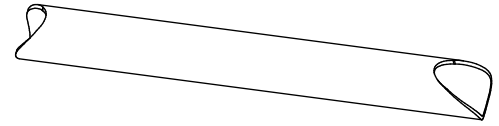
**MB3071 - Weldment, Cross Member Front**  
Qty 1



**MB3071-11\_MIR**  
Qty 1

**MB7009 - Assembly Instructions YJ/TJ/LJ 4 Link Suspension Mounts****CONTENTS**

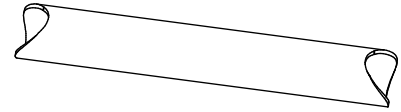
**MB3073 - Tube 01**  
Qty 2



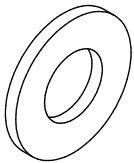
**MB3073 - Tube 03**  
Qty 1



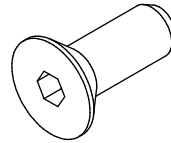
**MB3073 - Tube 02**  
Qty 1



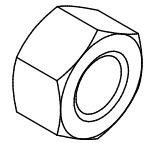
**MB3073 - Tube 04**  
Qty 1



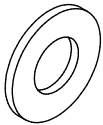
**Flat Washer**  
1/2"  
Qty 8



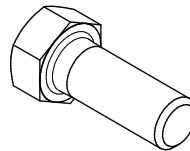
**Countersunk Screw, Stainless**  
3/8"-16 UNC x 1.00" Long  
Qty 12



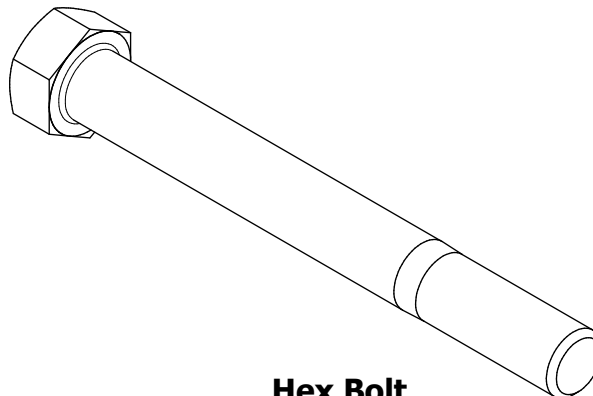
**Nylock Nut**  
1/2"-13 UNC  
Qty 4



**Flat Washer**  
3/8"  
Qty 8



**Hex Bolt**  
3/8"-16 UNC x 1.00" Long  
Qty 8

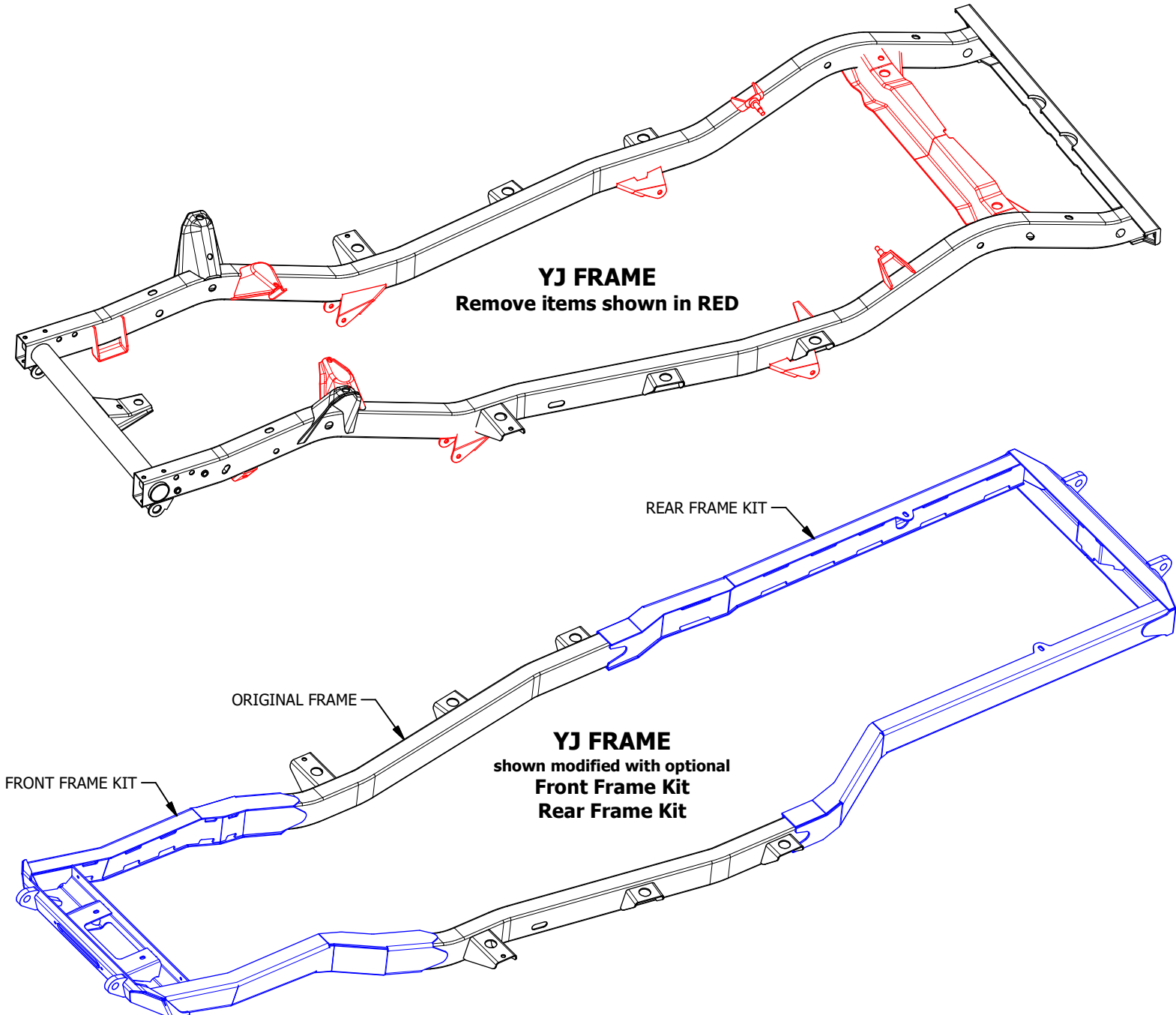


**Hex Bolt**  
1/2"-13 UNC x 4.50" Long  
Qty 4

**MB7009 - Assembly Instructions YJ/TJ/LJ 4 Link Suspension Mounts****ASSEMBLY - STEP 1****NOTE:**

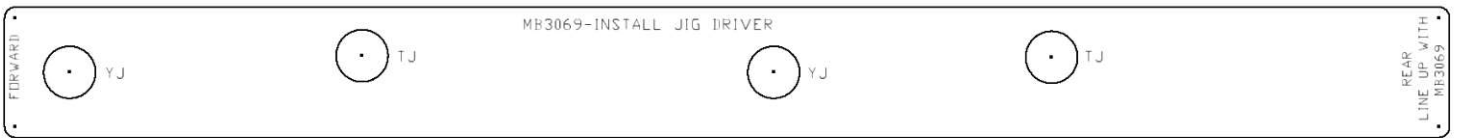
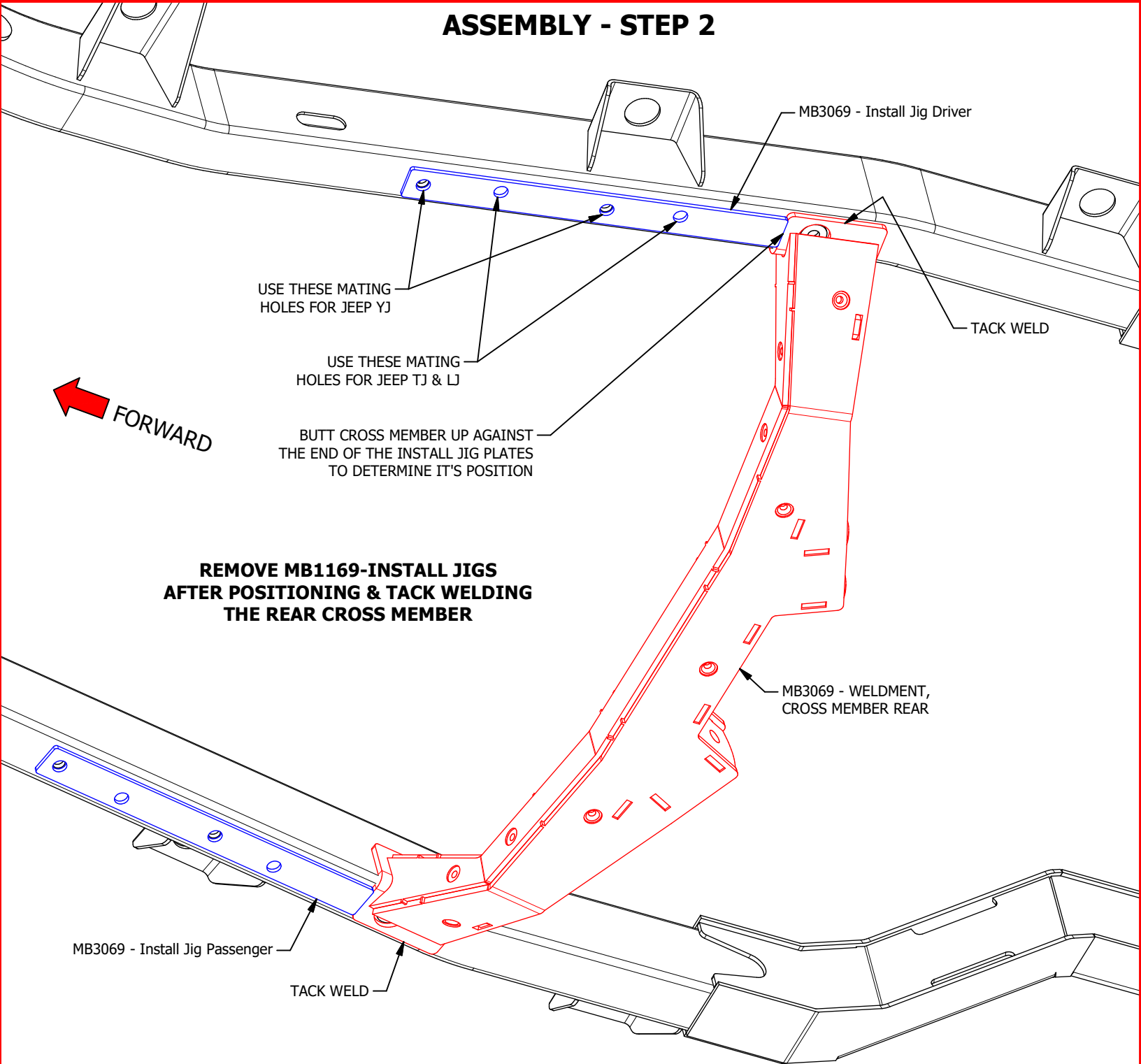
The factory frames of Jeep YJ, TJ & LJ are very similar. This MB7009 works with Jeep YJ, TJ & LJ.

For the purposes of these assembly instructions, we show views with a YJ frame that has been modified with the addition of front & rear half frame kits. You do NOT have to install the Motobilt front & rear half frame kits in order to install the MB7009 kit, however, the function of installing a triangulated 4 link suspension system is typically to stretch the front axle forward & the rear axle rearward thereby increasing your wheelbase, which is what our front & rear frame kits provide. Our optional front & rear frame kits are available for Jeep YJ, TJ & LJ with various stretch options.



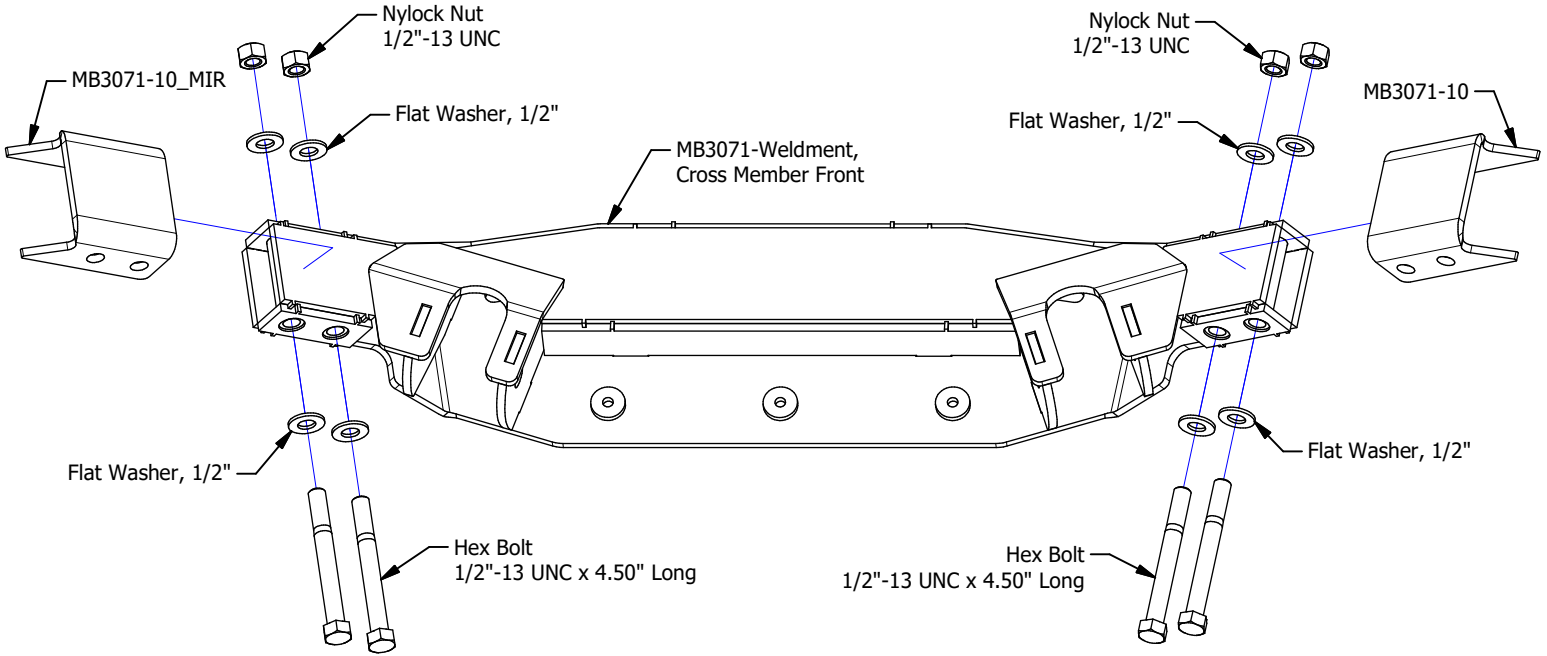
**MB7009 - Assembly Instructions YJ/TJ/LJ 4 Link Suspension Mounts**

**ASSEMBLY - STEP 2**

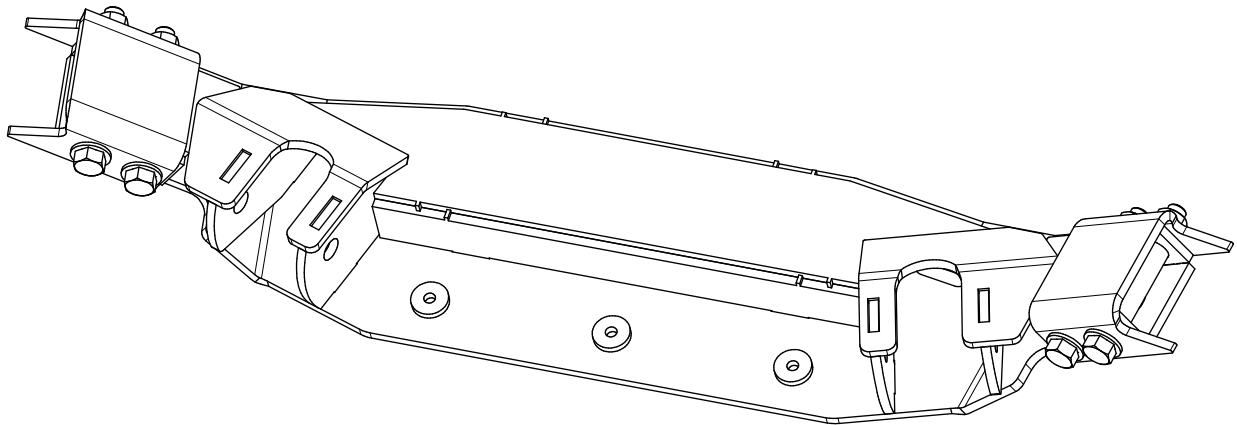


**MB7009 - Assembly Instructions YJ/TJ/LJ 4 Link Suspension Mounts**

**ASSEMBLY - STEP 3**



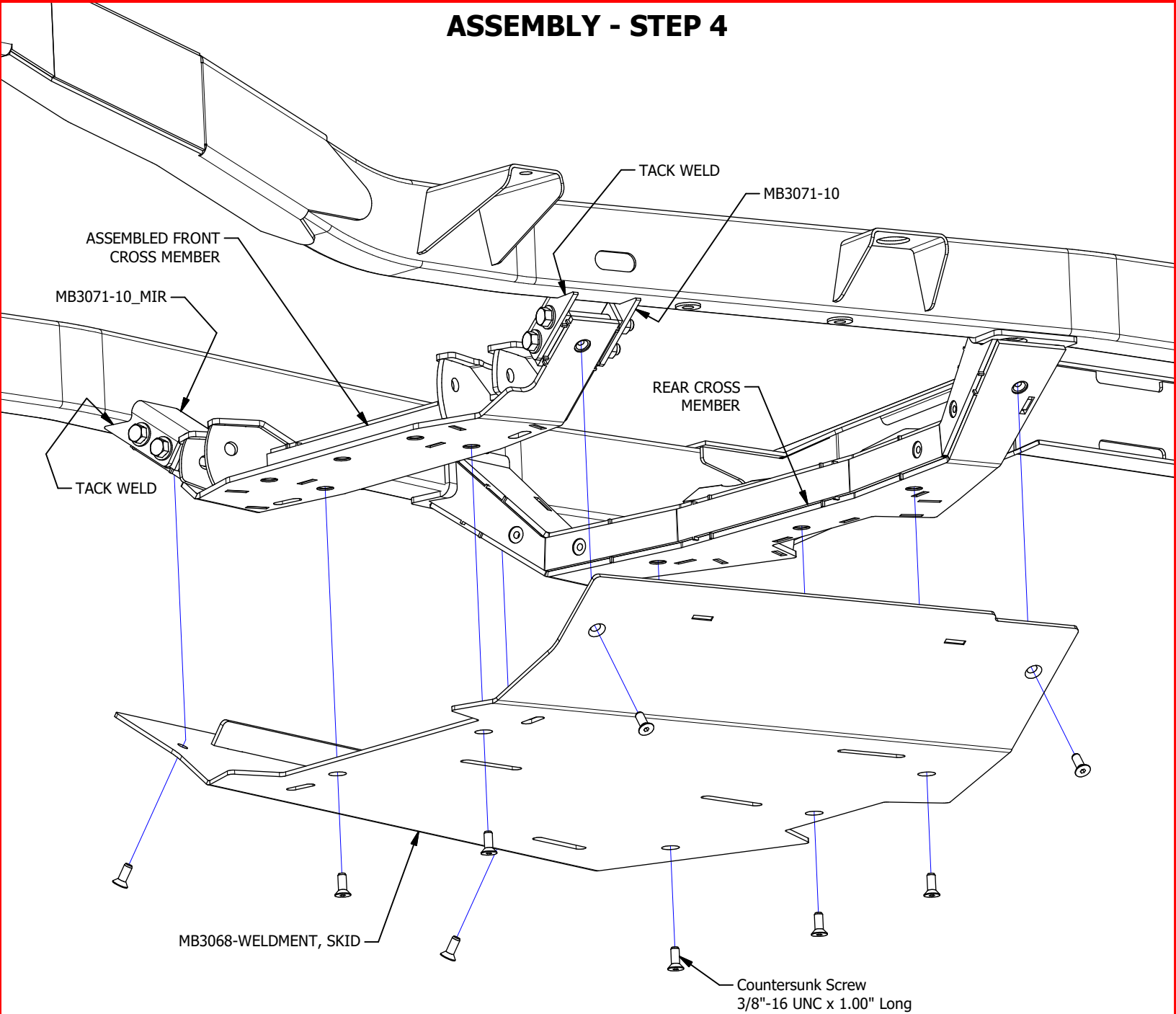
**ASSEMBLE FRONT CROSS MEMBER**



**AFTER ASSEMBLY**

# MB7009 - Assembly Instructions YJ/TJ/LJ 4 Link Suspension Mounts

## ASSEMBLY - STEP 4

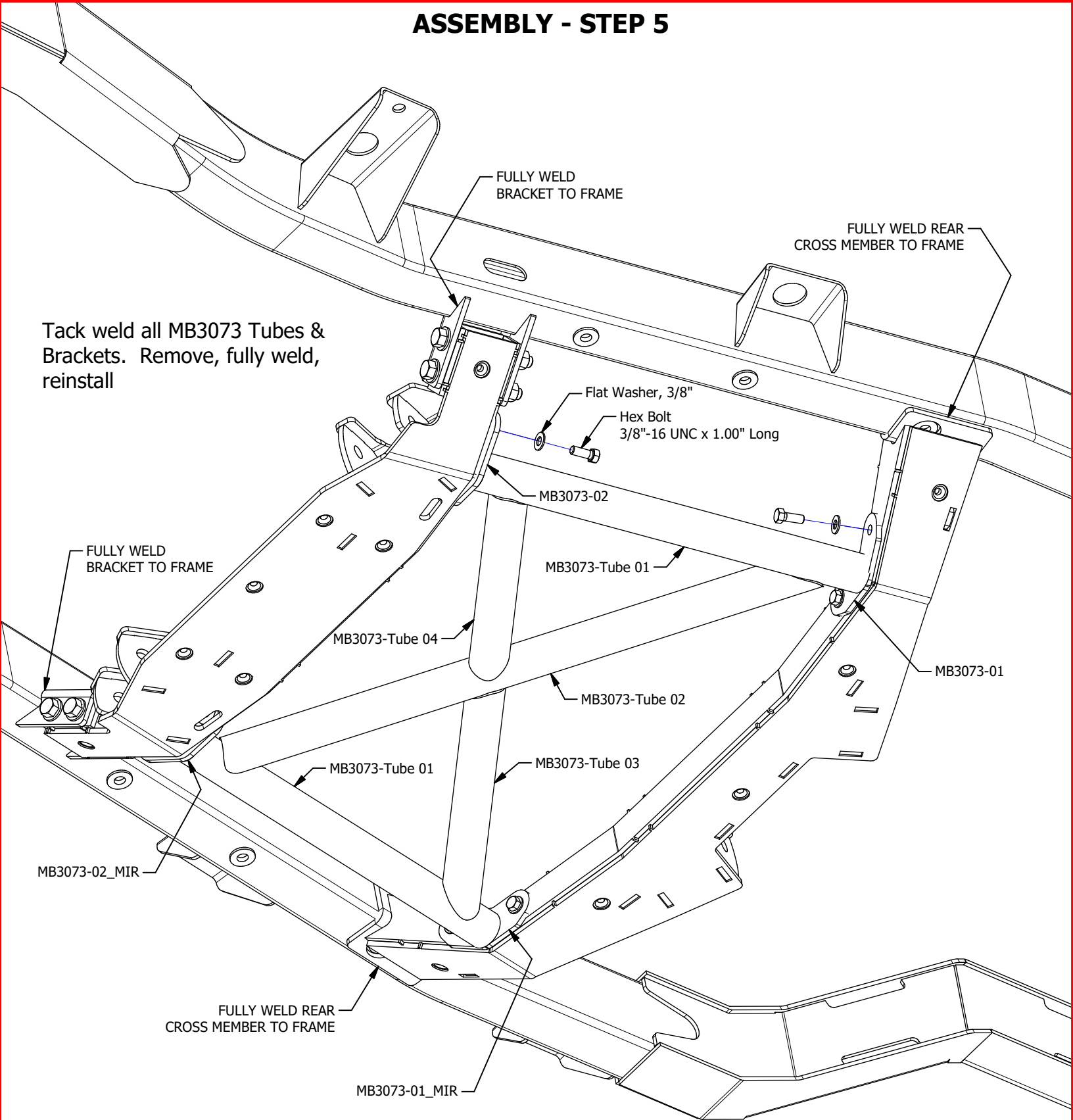


1. Bolt the assembled front cross member to the skid.
2. Raise the skid with the assembled front cross member & bolt to the rear cross member.
3. Ensure Brackets MB3071-10 & MB3071-10\_MIR wrap around the shape of the underside of the frame.
2. Tack weld brackets MB3071-10 & MB3071-10\_MIR to vehicle frame.
3. Remove skid. Keep Front Cross Member bolted into position.

**MB7009 - Assembly Instructions YJ/TJ/LJ 4 Link Suspension Mounts**

**ASSEMBLY - STEP 5**

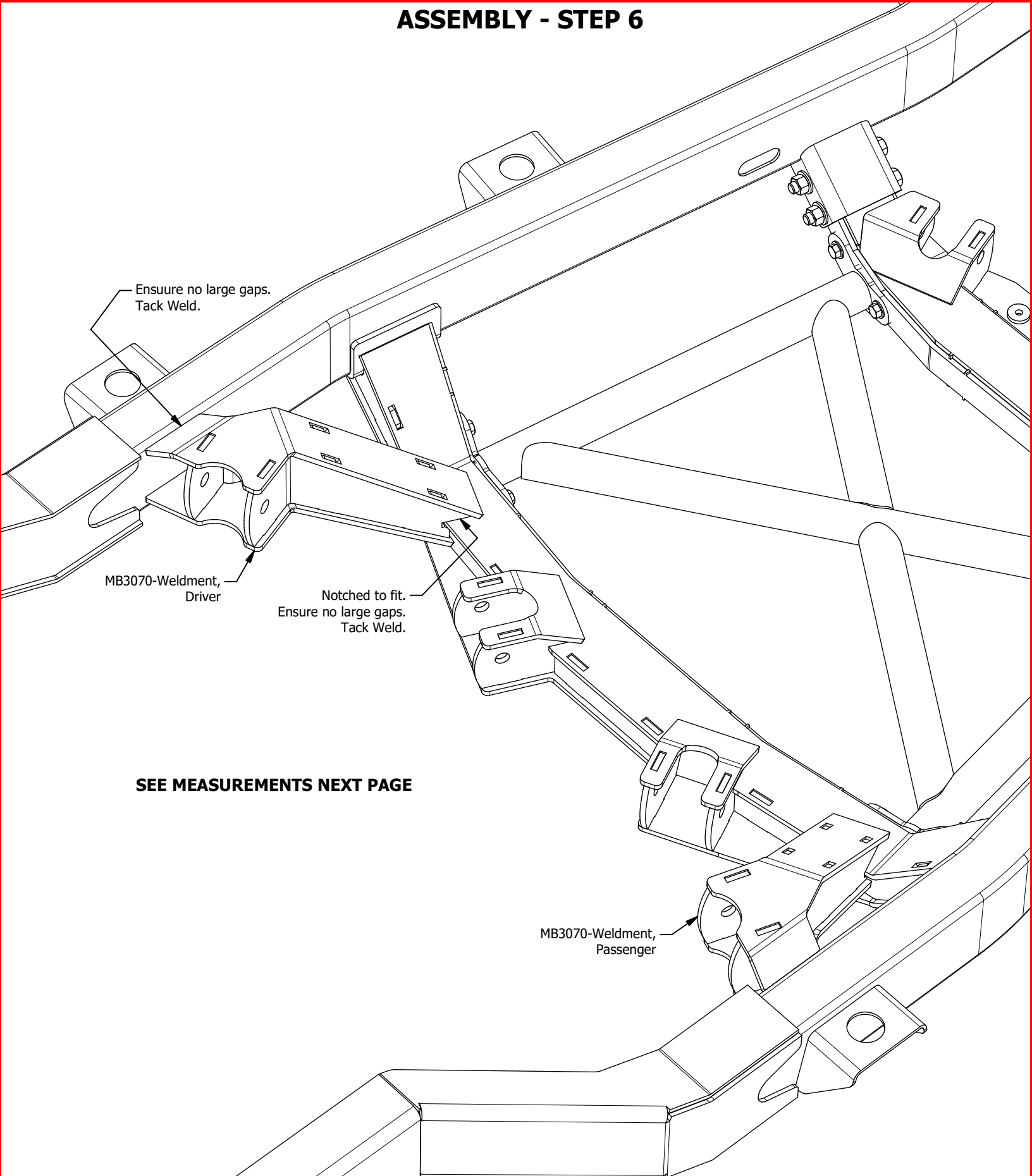
Tack weld all MB3073 Tubes & Brackets. Remove, fully weld, reinstall





**MB7009 - Assembly Instructions YJ/TJ/LJ 4 Link Suspension Mounts**

**ASSEMBLY - STEP 6**

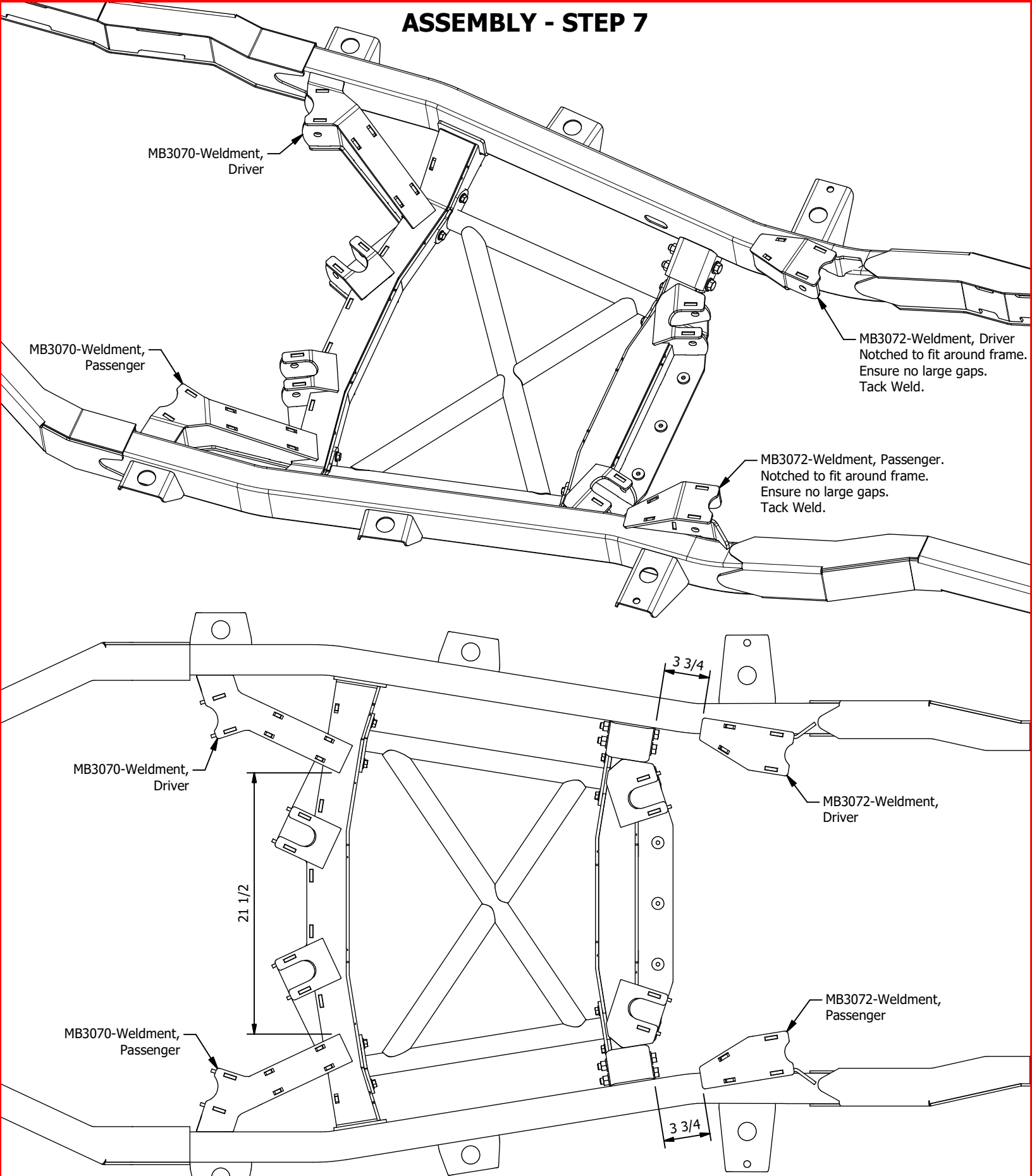


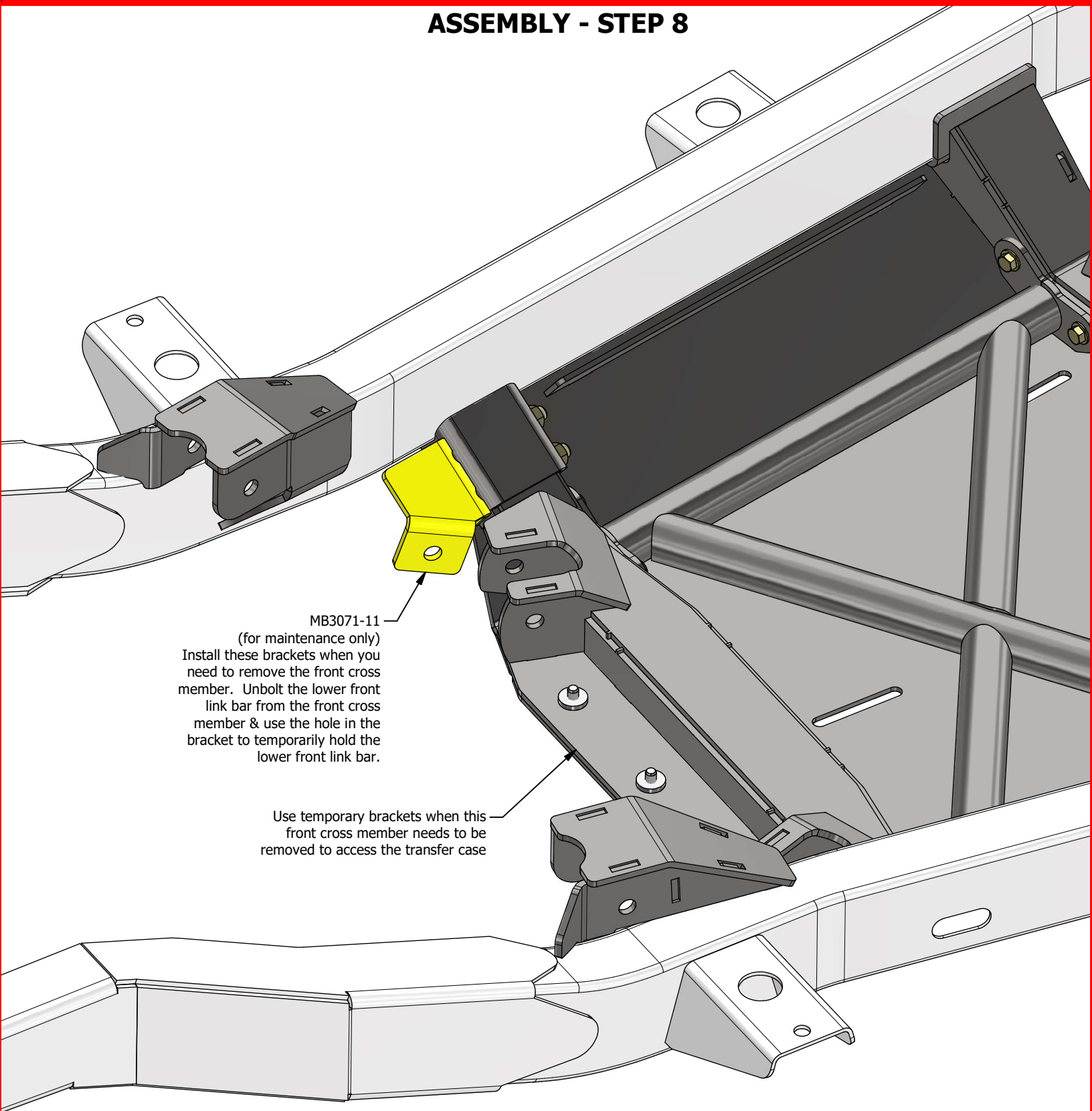
**SEE MEASUREMENTS NEXT PAGE**

MB3070-Weldment,  
Passenger

**MB7009 - Assembly Instructions YJ/TJ/LJ 4 Link Suspension Mounts**

**ASSEMBLY - STEP 7**



**MB7009 - Assembly Instructions YJ/TJ/LJ 4 Link Suspension Mounts**
**ASSEMBLY - STEP 8**


**MB3071-11**  
 (for maintenance only)  
 Install these brackets when you  
 need to remove the front cross  
 member. Unbolt the lower front  
 link bar from the front cross  
 member & use the hole in the  
 bracket to temporarily hold the  
 lower front link bar.

Use temporary brackets when this  
 front cross member needs to be  
 removed to access the transfer case