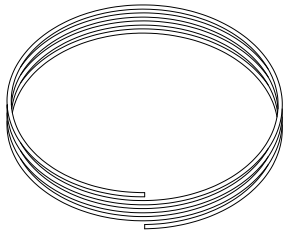
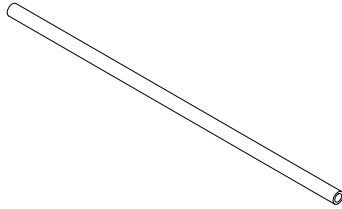
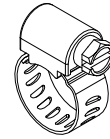
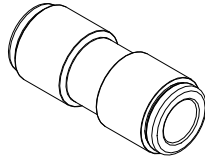
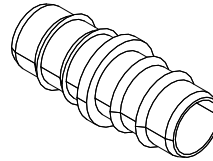
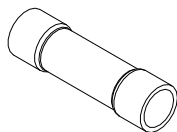
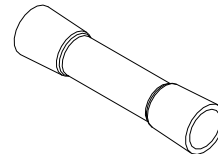


**MB5035 - Assembly Instructions 2012-2018 JKU Fuel Line & EVAP Modification****CONTENTS****3/8" Nylon Fuel Line  
Qty 5 ft****3/8" Rubber Fuel Line  
Qty 12 ft****Hose Clamp, 3/8"  
Qty 6****Push Connect Union  
Qty 2****Barbed Splice  
Qty 1****Fuel Pump Extension Wire  
12 Ga, 4 ft  
Qty 2****Fuel Sender Extension Wire  
16 Ga, 4 ft  
Qty 2****Electrical Butt Connector  
12 Ga to 10 Ga  
Qty 4****Electrical Butt Connector  
16 Ga to 14 Ga  
Qty 4**